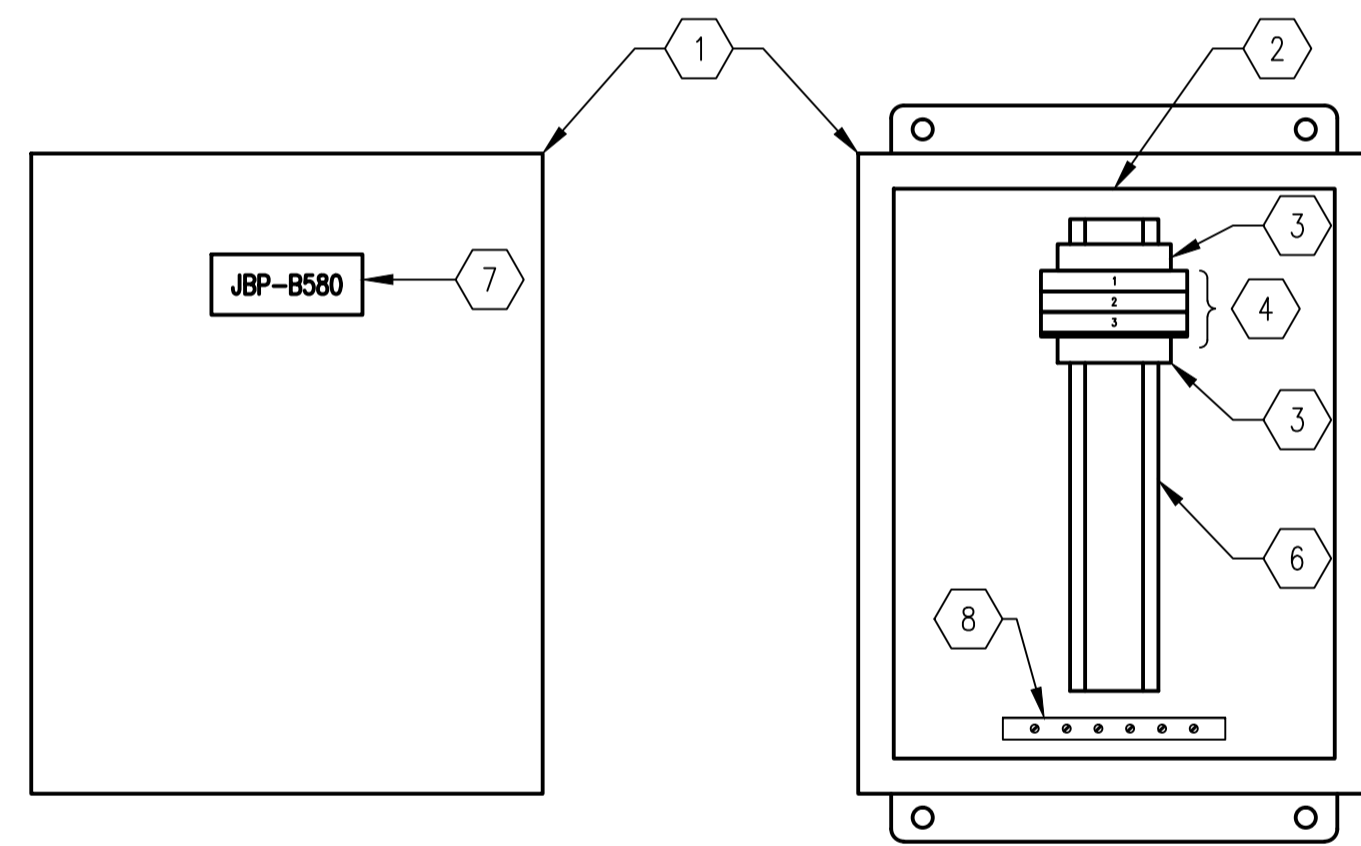


**EXTERIOR PANEL VIEW**  
SCALE: 1 : 3

BILL OF MATERIAL				
ITEM	QTY	DESCRIPTION	MANUFACTURER	CATALOG NUMBER
1	1	SENSOR TERMINATION ENCLOSURE	ENDRESS & HAUSER	FMX167 TERMINAL BOX
2	AS REQ'D	LAMACOIDS, 5mm HIGH BLACK TEXT ON WHITE PLATE	-	-



**EXTERIOR PANEL VIEW**  
SCALE: 1 : 3

**INTERIOR PANEL VIEW**  
SCALE: 1 : 3

BILL OF MATERIAL				
ITEM	QTY	DESCRIPTION	MANUFACTURER	CATALOG NUMBER
1	AS REQ'D	JUNCTION BOX, NEMA 4	HOFFMAN	A1008CHNF
2	AS REQ'D	BACKPAN	HOFFMAN	A10P8
3	AS REQ'D	TERMINAL END CLAMP	PHOENIX CONTACT	1201442
4	AS REQ'D	FEED THROUGH TERMINAL, 50A, 24-8AWG	PHOENIX CONTACT	3044131
5	AS REQ'D	TERMINAL END COVER	PHOENIX CONTACT	3047028
6	AS REQ'D	35mm DIN RAIL	PHOENIX CONTACT	0801733
7	AS REQ'D	LAMACOIDS, 5mm HIGH, BLACK TEXT ON WHITE PLATE	-	-
8	1	GROUND BAR, 6 TAP	ILSCO	D167-6

1-0102B-A0030	LOOP DIAGRAM, B580-LT, BOILER ROOM FLOOD LEVEL
1-0102B-E0013	MOTOR SCHEMATIC, B580-SMP
1-0102B-E0012	INSTALLATION DETAIL, BOILER ROOM FLOOD PUMP
DRAWING NUMBER	REFERENCE DRAWINGS

**NOTES:**

- LABEL WIREWAY COVERS AND BACKPLANE AS SHOWN.



NO.	REVISIONS	DATE	DESIGN	CHECK
00	ISSUED FOR TENDER, BID OPP: 545-2012	2012/08/31	TMC	CJR

**SNC-LAVALIN INC.**  
148 Nature Park Way  
Winnipeg, MB, Canada R3P 0X7  
204-786-8080

DESIGNED BY: I. CHURCH  
DRAWN BY: M.J. PERSSON  
SCALE: 1:3  
DATE: 2012/04/03

CHECKED BY: C. REIMER  
APPROVED BY: C. REIMER  
RELEASED FOR CONSTRUCTION BY: N. HARRINGTON  
DATE: 2012/08/31

CONSULTANT NO.: 112577-0116-4800-1002

ENGINEER'S SEAL

**THE CITY OF WINNIPEG**  
WATER AND WASTE DEPARTMENT

SOUTH END WATER POLLUTION CONTROL CENTRE  
VENTILATION & MISC. UPGRADES  
PANEL LAYOUT  
JUNCTION BOXES  
JBA-B580, JBP-B580

CITY DRAWING NUMBER: 1-0102B-A0031  
SHEET: 001  
REV: 00  
SIZE: A1