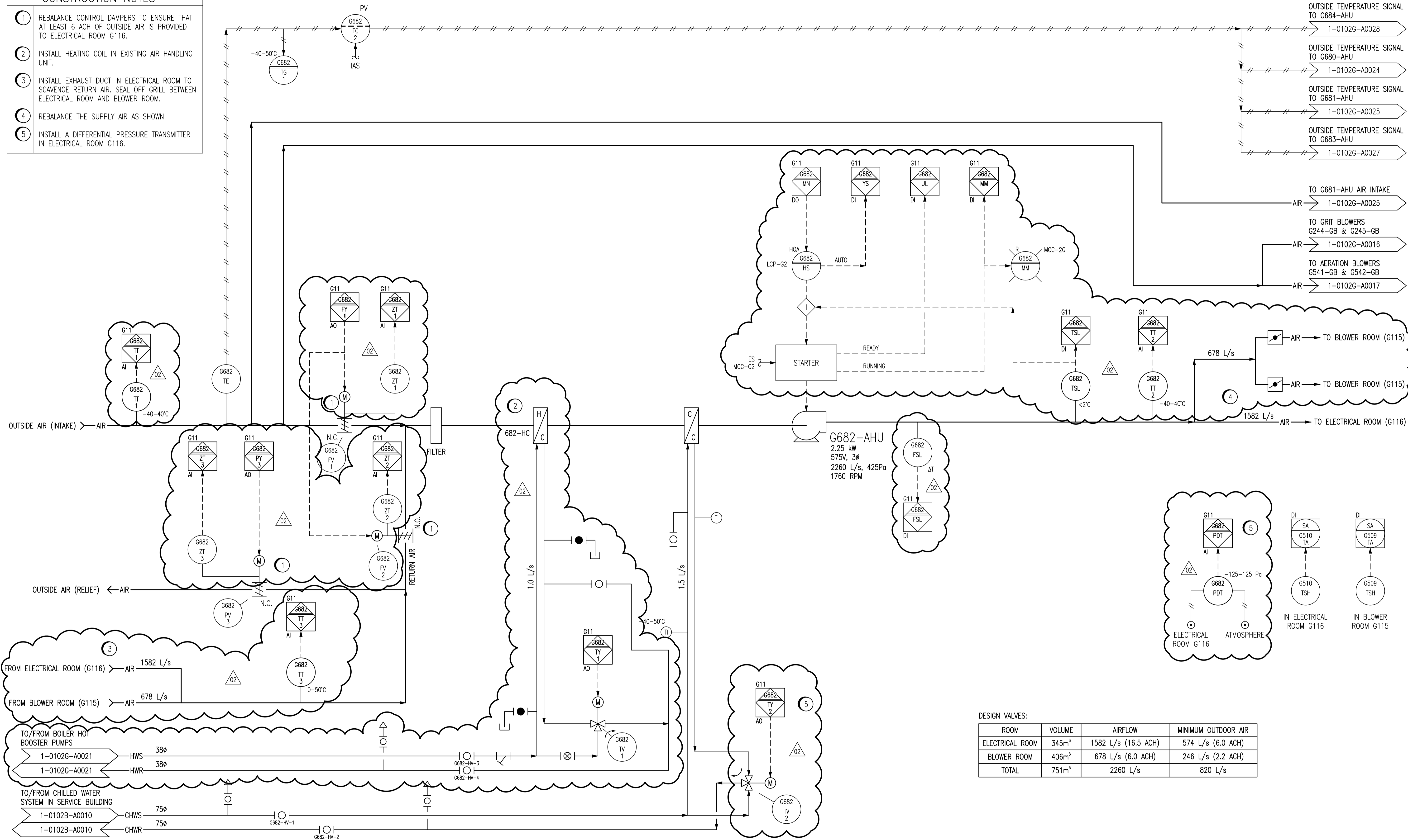


CONSTRUCTION NOTES

- 1 REBALANCE CONTROL DAMPERS TO ENSURE THAT AT LEAST 6 ACH OF OUTSIDE AIR IS PROVIDED TO ELECTRICAL ROOM G116.
- 2 INSTALL HEATING COIL IN EXISTING AIR HANDLING UNIT.
- 3 INSTALL EXHAUST DUCT IN ELECTRICAL ROOM TO SCAVENGE RETURN AIR. SEAL OFF GRILL BETWEEN ELECTRICAL ROOM AND BLOWER ROOM.
- 4 REBALANCE THE SUPPLY AIR AS SHOWN.
- 5 INSTALL A DIFFERENTIAL PRESSURE TRANSMITTER IN ELECTRICAL ROOM G116.



DESIGN VALVES:

ROOM	VOLUME	AIRFLOW	MINIMUM OUTDOOR AIR
ELECTRICAL ROOM	345m ³	1582 L/s (16.5 ACH)	574 L/s (6.0 ACH)
BLOWER ROOM	406m ³	678 L/s (6.0 ACH)	246 L/s (2.2 ACH)
TOTAL	751m ³	2260 L/s	820 L/s

- NOTES:**
1. THIS DRAWING SUPERSEDES PART OF DRAWING SEP-868.
 2. ALL INSTRUMENTS SHOWN IN AN AUXILIARY LOCATION ARE LOCATED IN HVAC CONTROL PANEL GCP-7 UNLESS OTHERWISE DESIGNATED.



NO.	REVISIONS	DATE	DESIGN	CHECK
02	ISSUED FOR TENDER, BID OPP. 545-2012	2012/10/11	TMC	CJR
01	ORIGINAL DRAWING NO. WAS 1-0102G-G-A0026-001	2010/07/26	-	DC
00	ISSUED FOR CITY USE	2006/11/28	-	EFB

SNC-LAVALIN INC.
148 Nature Park Way
Winnipeg, MB, Canada R3P 0X7
204-786-8080

DESIGNED BY: EXISTING
DRAWN BY: DAH/EFB
SCALE: NTS
DATE: 2005/11/25
CONSULTANT NO.: 112577-0116-49DD-0126

CHECKED BY: EFB
APPROVED BY: CJR
RELEASED FOR CONSTRUCTION BY: [Signature]
DATE: [Blank]

ENGINEER'S SEAL

THE CITY OF WINNIPEG
WATER AND WASTE DEPARTMENT

SOUTH END WATER POLLUTION CONTROL CENTRE
VENTILATION & MISC. UPGRADES
PROCESS & INSTRUMENTATION DIAGRAM
ELECTRICAL ROOM AND BLOWER ROOM COOLING UNIT
G682-AHU

CITY DRAWING NUMBER: 1-0102G-A0026
SHEET: 001
REV: 02
SIZE: A1

1-0102G-A0096	P & ID, ELECTRICAL ROOM EXHAUST FAN, G692-EF
1-0102A-A0001	PROCESS & INSTRUMENT DIAGRAMS LEGEND & DETAILS
DRAWING NUMBER	REFERENCE DRAWINGS