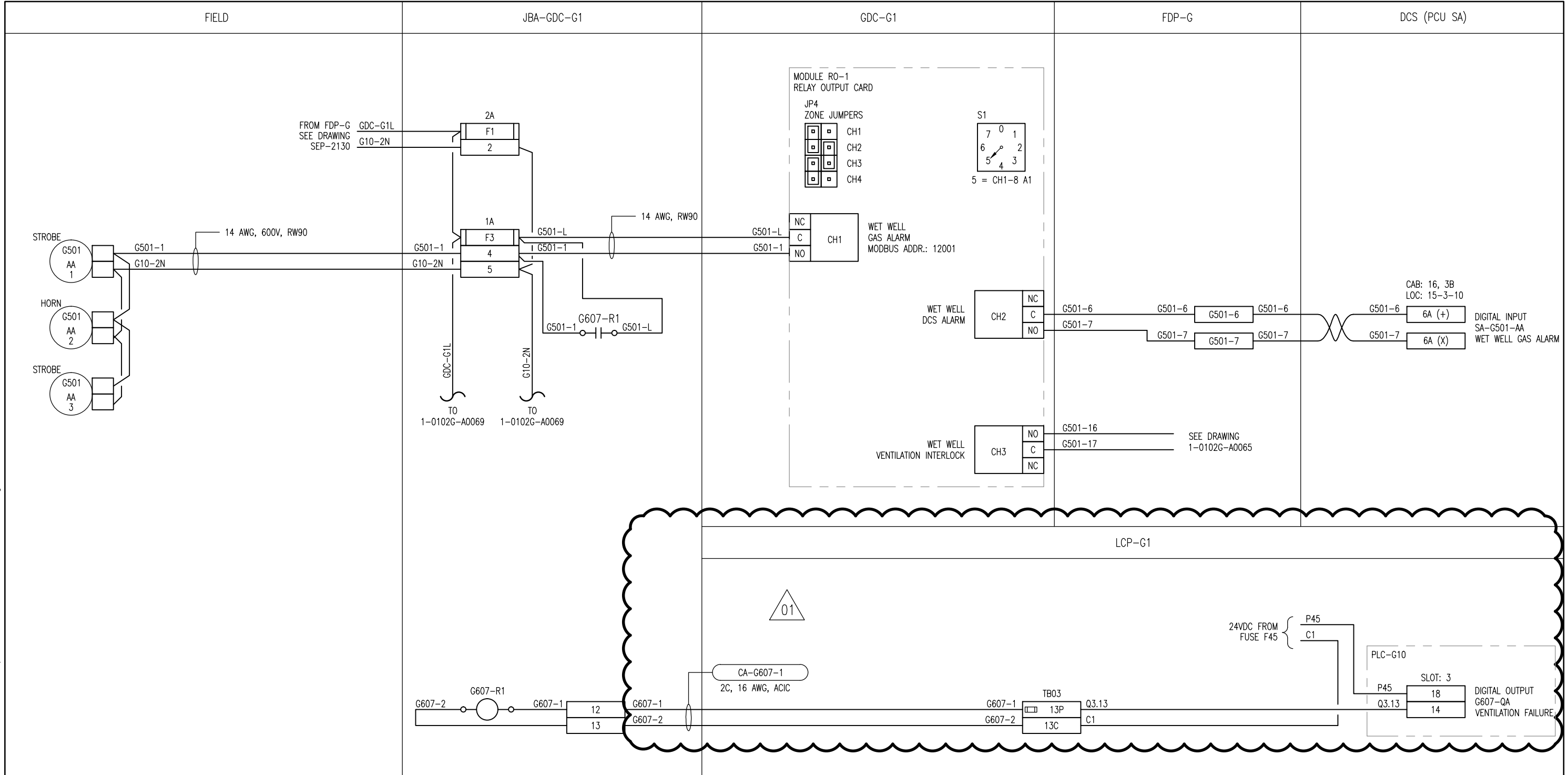


B SIZE - 279mm x 432mm

LAST SAVE: 2012/10/09 - 9:03am
 PATH: M:\112577\0106\4ENG\48&C\DD - General DWG\1-0102G-A0058-001-01.dwg



- NOTES:**
- G607-R1 IS A WET WELL VENTILATION FAILURE ALARM. SEE DRAWING 1-0102G-A0051 FOR WIRING DETAILS.
 - INSTALL IN ACCORDANCE WITH HAZARDOUS CLASS 1, ZONE 2 REQUIREMENTS.



SNC-LAVALIN INC.
 148 Nature Park Way
 Winnipeg, MB, Canada R3P 0X7
 204-786-8080

DESIGNED BY: T. CHURCH	CHECKED BY: C. REIMER
DRAWN BY: S. COATES	APPROVED BY: C. REIMER
SCALE: NTS	DATE: 2009/10/23
RELEASED FOR CONSTRUCTION	
BY: N. HARRINGTON	DATE: 2011/03/11
CONSULTANT NO.: 112577-0106-48DD-1214	



SOUTH END WATER POLLUTION CONTROL CENTRE
 ESSENTIAL SYSTEM UPGRADES
 INSTRUMENT LOOP DIAGRAM
 G501 WET WELL GAS ALARM & G607 VENT FAILURE

NO.	REVISIONS	DATE	DESIGN	CHECK
01	ADDED LCP-G1 CONNECTION, BID OPP. 545-2012	2012/08/31	TMC	CJR
00	ISSUED FOR TENDER, BID OPP. 209-2011	2011/03/11	TMC	CJR

CITY DRAWING NUMBER 1-0102G-A0058	SHEET 001	REV. 01	SIZE B
---	---------------------	-------------------	------------------