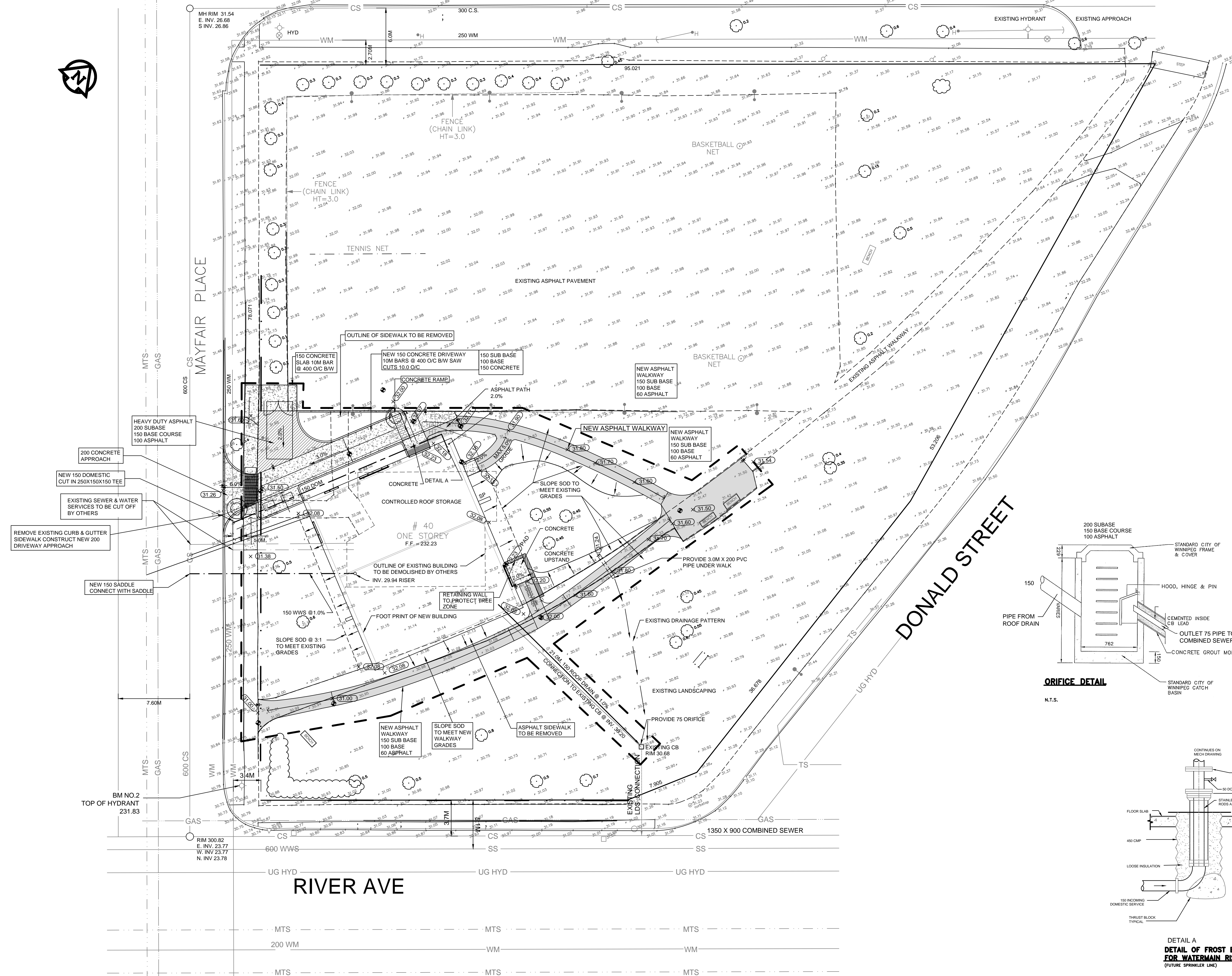
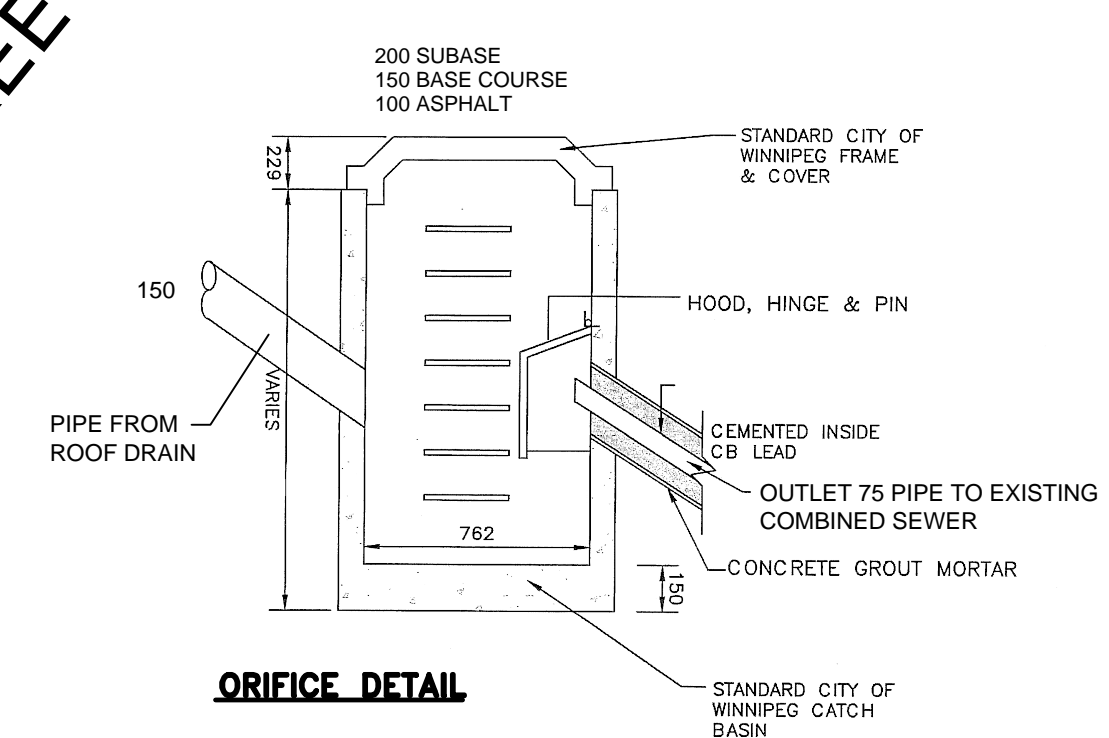


MAYFAIR PLACE

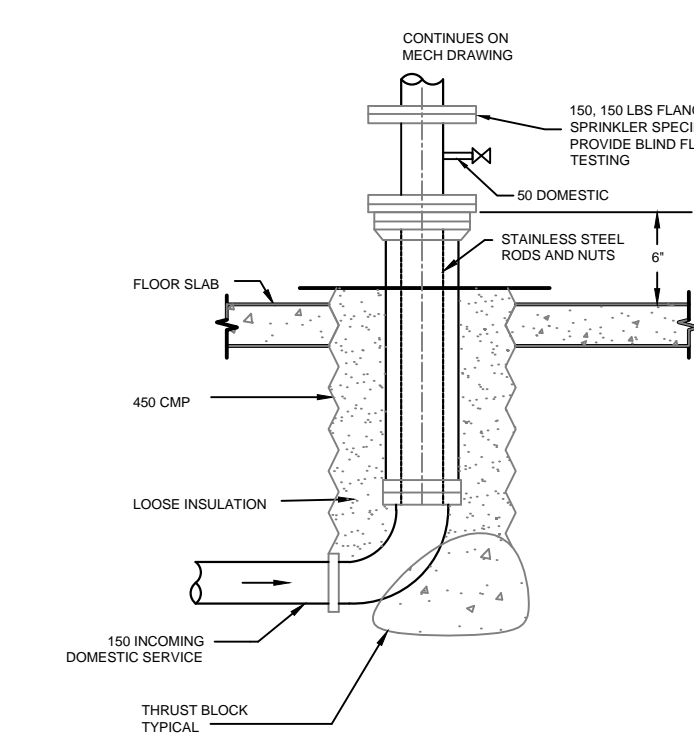
PLACE



- 1.0 CONSTRUCTION NOTES**
- ALL CONSTRUCTION TO CONFORM WITH APPROPRIATE CITY OF WINNIPEG CONSTRUCTION SPECIFICATIONS.
 - CONTRACTOR TO OBTAIN ALL PERMITS.
 - CONTRACTOR TO OBTAIN UTILITY CLEARANCES BEFORE EXCAVATING.
 - AUGER UNDER STREET PAVEMENT.
 - BACKFILL ALL TRENCHES IN PARKING LOTS WITH GRANULAR MATERIALS.
 - BACKFILL IN LANDSCAPED AREAS TO BE CLASS 5.
 - CONFIRM ALL DIMENSIONS BEFORE STARTING.
 - MATERIALS**
WWS AND LDS: SDR-35 OR EQUAL
WM: C-900
CATCH BASINS: NOT APPLICABLE
- 2.0 DRAINAGE DESIGN NOTES**
- RATIONAL FORMULA WAS USED.
 $Q = CIA$ FOR 5 YEAR STORM $I = \frac{47.2}{(t+8)^{0.28}}$
 $t = 10$ MINUTES
 $i = 4.31$ in/hr
 $A = 1.36$ AC
 - $Q = CIA$ FOR 25 YEAR STORM $I = \frac{72.5}{(t+9)^{0.42}}$
 $t = 10$ MINUTES
 $i = 6.08$ in/hr
 $A = 1.36$ AC
 - MAXIMUM ALLOWABLE RUNOFF COEFFICIENT: $C = 0.40$
 - CALCULATED RUNOFF COEFFICIENT IS $C = 0.47$ (REFER TO RUNOFF CALCULATION TABLE). ORIFICE SIZE REQUIRED 75 IN DIAMETER.
 - MAXIMUM ALLOWABLE RUNOFF FOR 5 YEAR STORM IS 2.34 CFS.
 - MAXIMUM ALLOWABLE RUNOFF FOR 25 YEAR STORM IS 3.30 CFS.
 - ALL SUBCATCHMENT BASINS ARE CALCULATED TO CONTAIN A 25 YEAR STORM.
REQUIRED STORAGE 4000 cu.ft.
AVAILABLE STORAGE _____ cu.ft.
 - RUNOFF COEFFICIENT TABLE**
- | SURFACE | AREA | C | FRACTION |
|-------------|----------|------|----------|
| ROOF | 0.086 AC | 0.90 | 0.053 |
| PAVEMENT | 0.543 AC | 0.90 | 0.359 |
| LANDSCAPING | 0.737 AC | 0.10 | 0.054 |
| | 1.36 AC | | 0.466 |
- AVERAGE WEIGHTED C = 0.47 (ROUND OFF)
- 3.0 MISCELLANEOUS NOTES**
- TOPOGRAPHIC SURVEY BY PHILLIPS & STEVENS MLS
 - EXISTING UTILITY INFORMATION COMPILED FROM GEOMATIC DRAWING & P & S DRAWING
 - GEODETIC BENCH MARK 53-05 ELEVATION 231.707 METRES
 - SECONDARY BENCH MARK TOP OF HYDRANT ELEVATION 231.83 METRES
 - SEE PHILLIPS & STEVENS DRAWING FOR LEGAL PLAN



ORIFICE DETAIL
N.T.S.



DETAIL A
DETAIL OF FROST BOX FOR WATERMAIN RISER
(FUTURE SPRINKLER LINE)

MTS	MTS	PROPOSED
T.S.	TRAFFIC SIGNALS	
50 GAS	GAS	
150 mm W.M.	WATERMAIN	
HYDRANT	HYDRANT	
VALVE	VALVE	
300 mm L.D.S.	LAND DRAINAGE SEWER	
250 mm W.W.S.	WASTE WATER SEWER	
MANHOLE	MANHOLE	
CATCH BASIN	CATCH BASIN	
CURB INLET	CURB INLET	
JUNCTIONS	JUNCTIONS	
CULVERT	CULVERT	
PROPERTY LINE	PROPERTY LINE	
SURVEY BAR	SURVEY BAR	
SERVICE VALVE	SERVICE VALVE	
SIDEWALK RAMP	SIDEWALK RAMP	
RIDGE	RIDGE	
ELEVATION	ELEVATION	
DRAINAGE FLOW	DRAINAGE FLOW	
EXISTING	LEGEND-PLAN	PROPOSED

SCALE: 1:200

MEC CONSULTING
14-386 BERRY STREET
WINNIPEG, MANITOBA
R3J 1N6

Tel: (204) 783-0757
Fax: (204) 774-3738

DRN CDS APP WPM MEC DWS No. 12187C 0
CHK WPM DATE 03/06/2013

bridgmancollaborative
ARCHITECTURE

678 MAIN STREET WINNIPEG, MB R3B 1E4
204 488 3857 tel. 204 488 0216 fax.

www.bridgmancollaborative.ca

MEC CONSULTING
Certificate of Authorization
MEC CONSULTING
No. 4438 Date: 2013-04-08

Winnipeg
THE CITY OF WINNIPEG PLANNING,
PROPERTY AND DEVELOPMENT
DEPARTMENT
MUNICIPAL ACCOMMODATIONS DIVISION
4TH FLOOR - 185 KING STREET
R3B 1J7

Project:
MAYFAIR RECREATION CENTRE

40 MAYFAIR PLACE
Project Number: 2011-112
Bid Opportunity Number: 556-2012

Drawing Title:
LOT GRADING & SITE SERVICES

NO.	REVISION	DATE
1	66% REVIEW	AUG 16 2012
2	66% REISSUE REVIEW	NOV 26 2012
3	99% REVIEW	MAR 6 2013
4	ISSUED FOR TENDER	APR 12 2013
5	ISSUED FOR ADDENDUM 1	APR 29 2013

Sheet No: **C0.1**

This drawing is property of the Architect and cannot be reproduced or used without the consent of the Architect. The contractor is responsible for grading and verifying all levels and dimensions and shall report all discrepancies to the Architect and obtain clarification prior to commencing work.