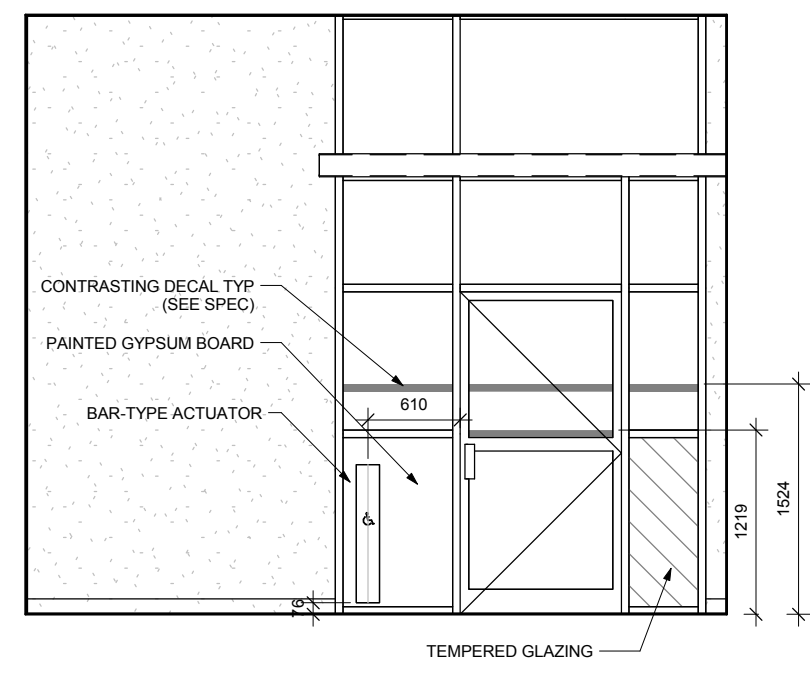
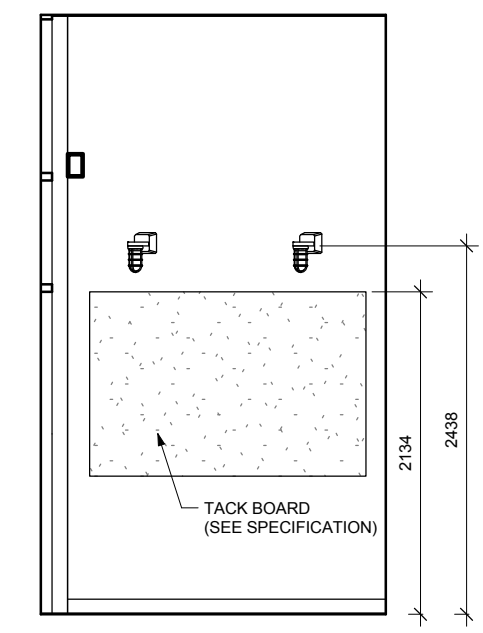


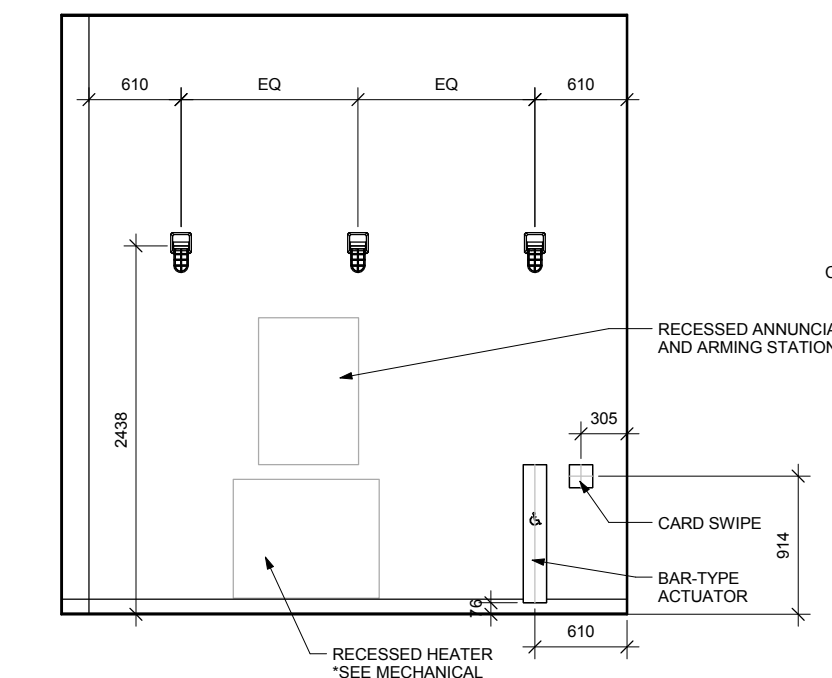
NOTES:
 * ALL DOORS TO HAVE TEMPERED GLAZING (SEE DOOR SCHEDULE)



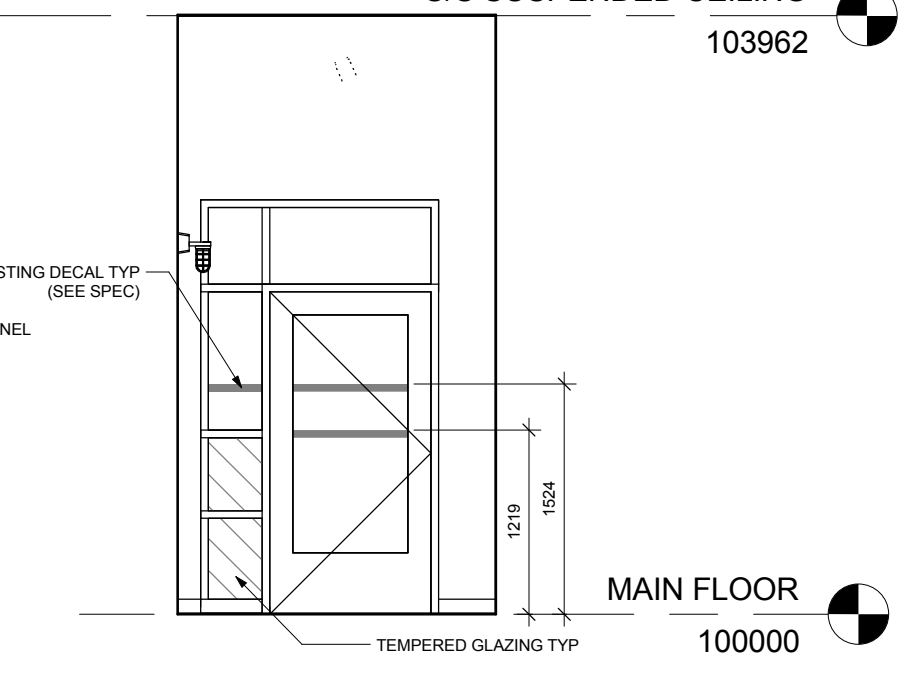
5 VESTIBULE 101 - a
 1:50



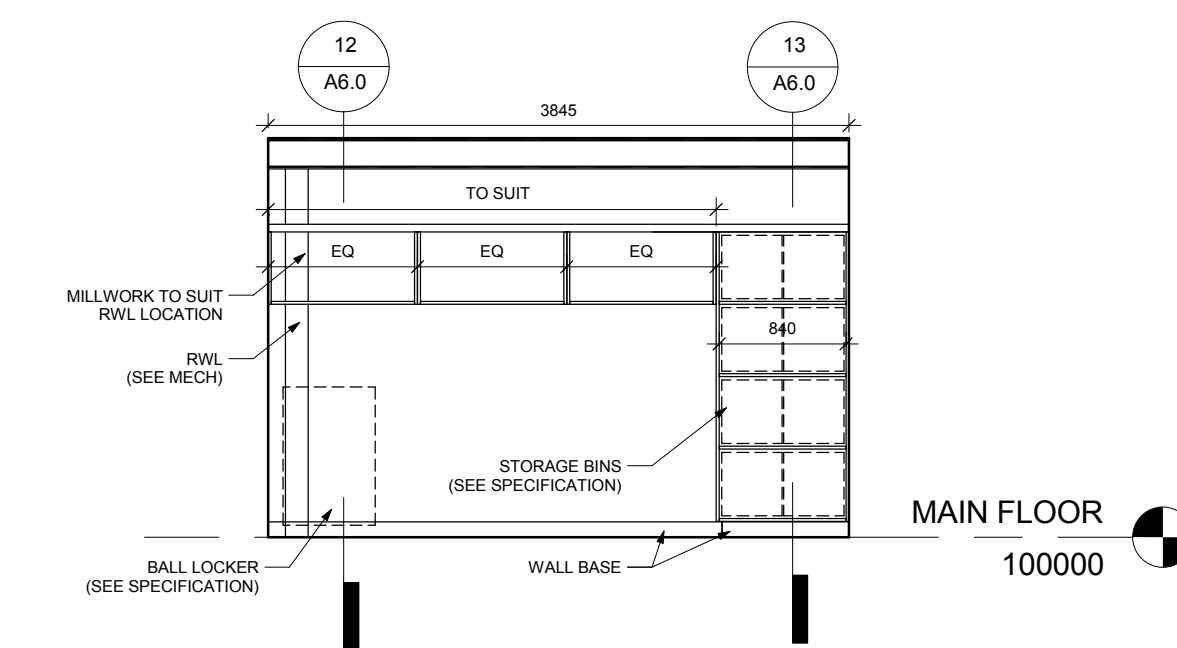
6 VESTIBULE 101 - b
 1:50



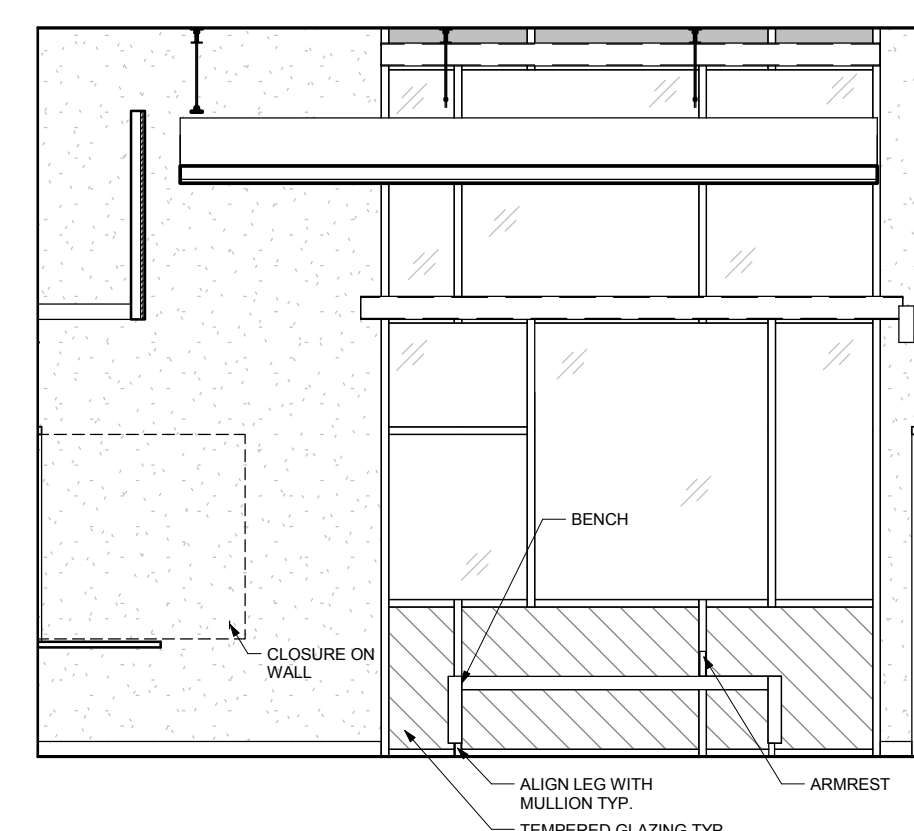
7 VESTIBULE 101 - c
 1:50



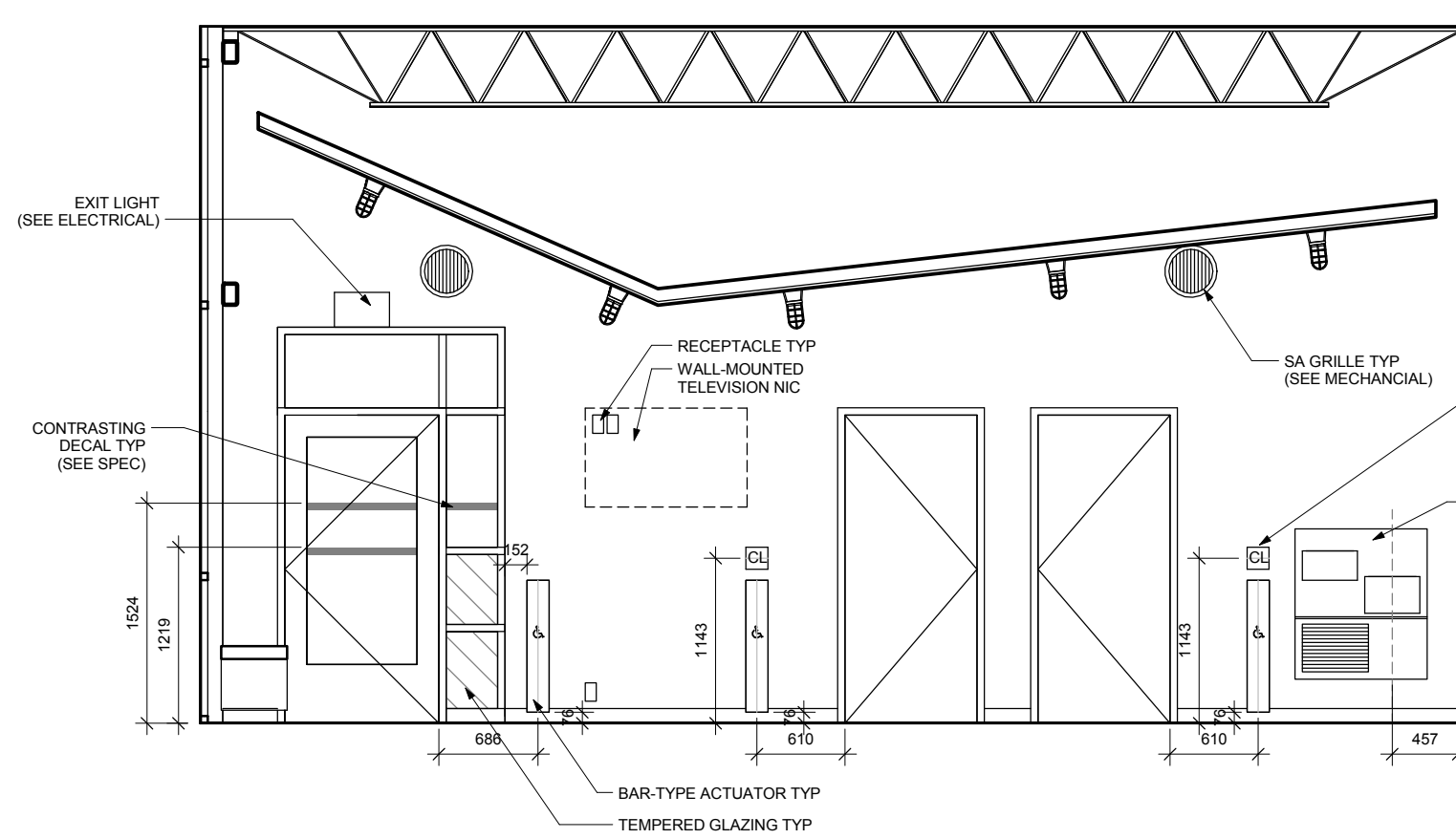
8 VESTIBULE 101 - d
 1:50



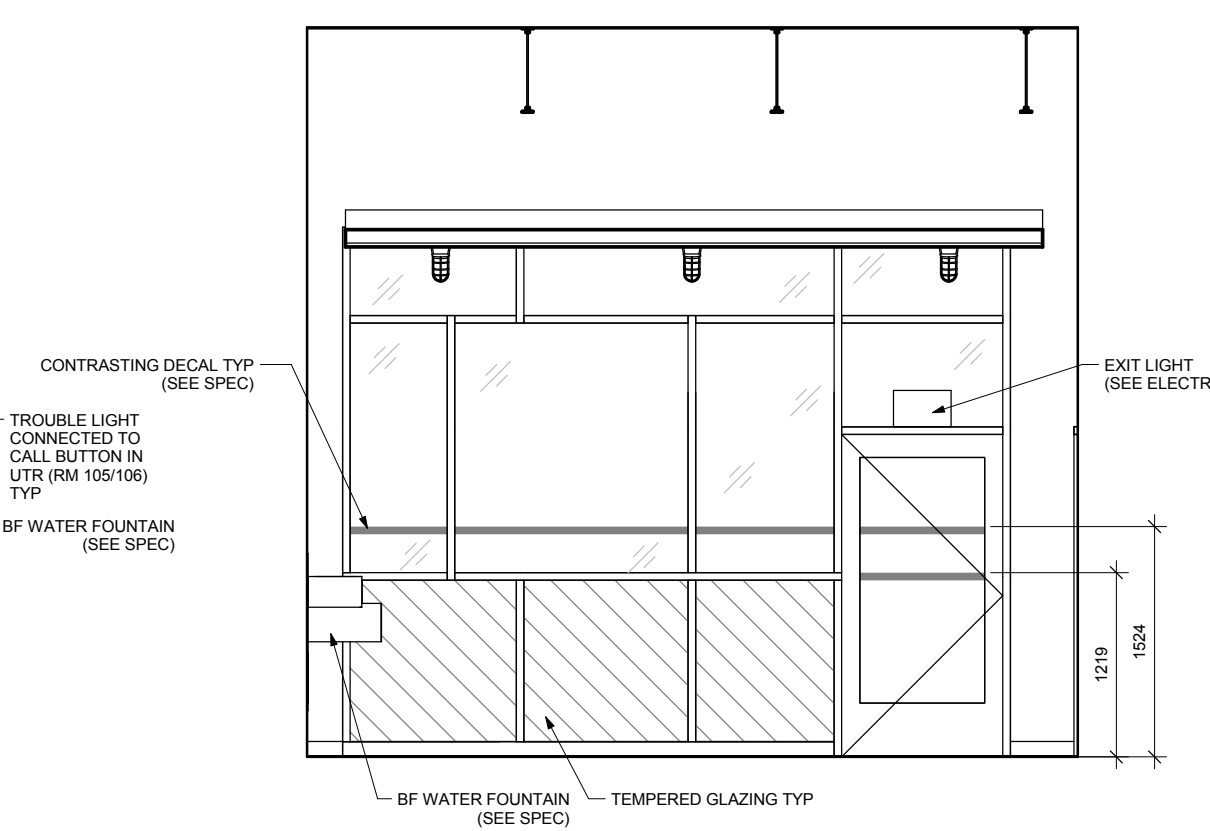
13 STORAGE 109 - d
 1:50



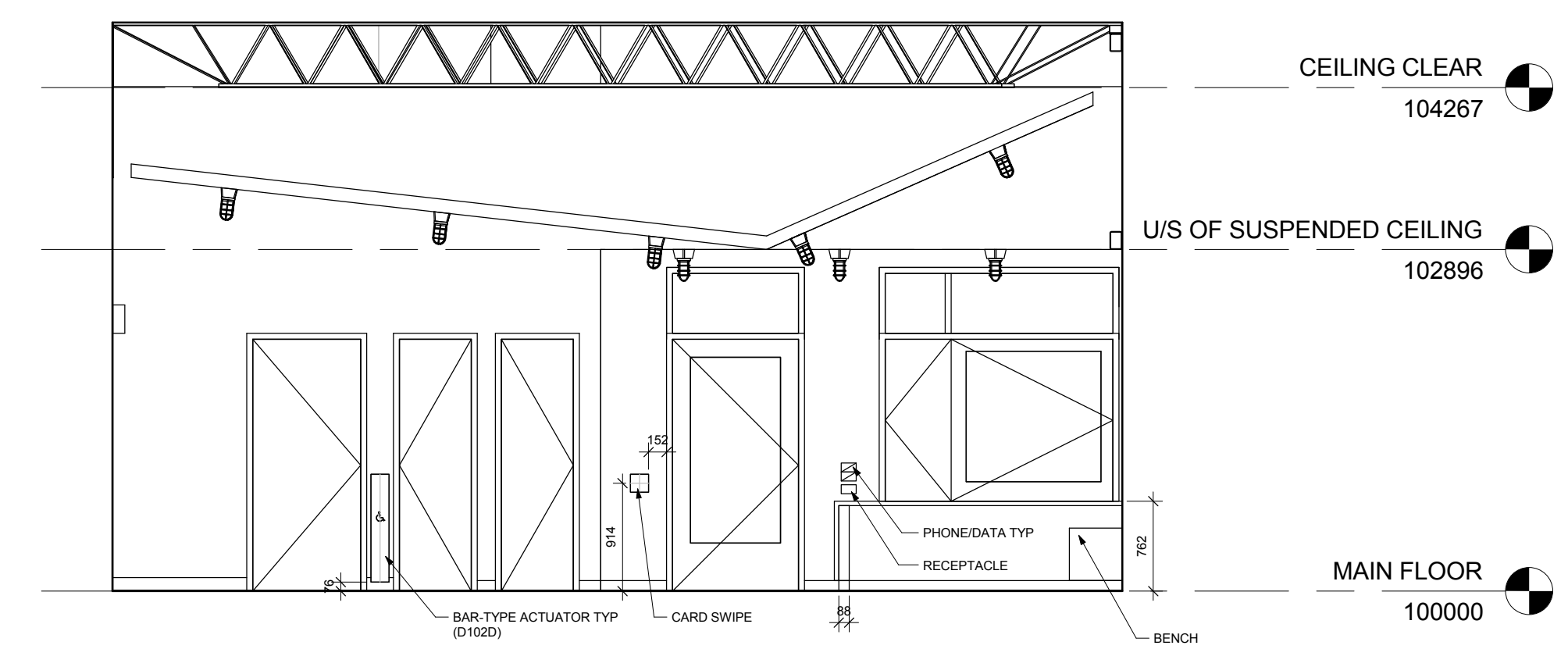
9 MPR 2 102 - a
 1:50



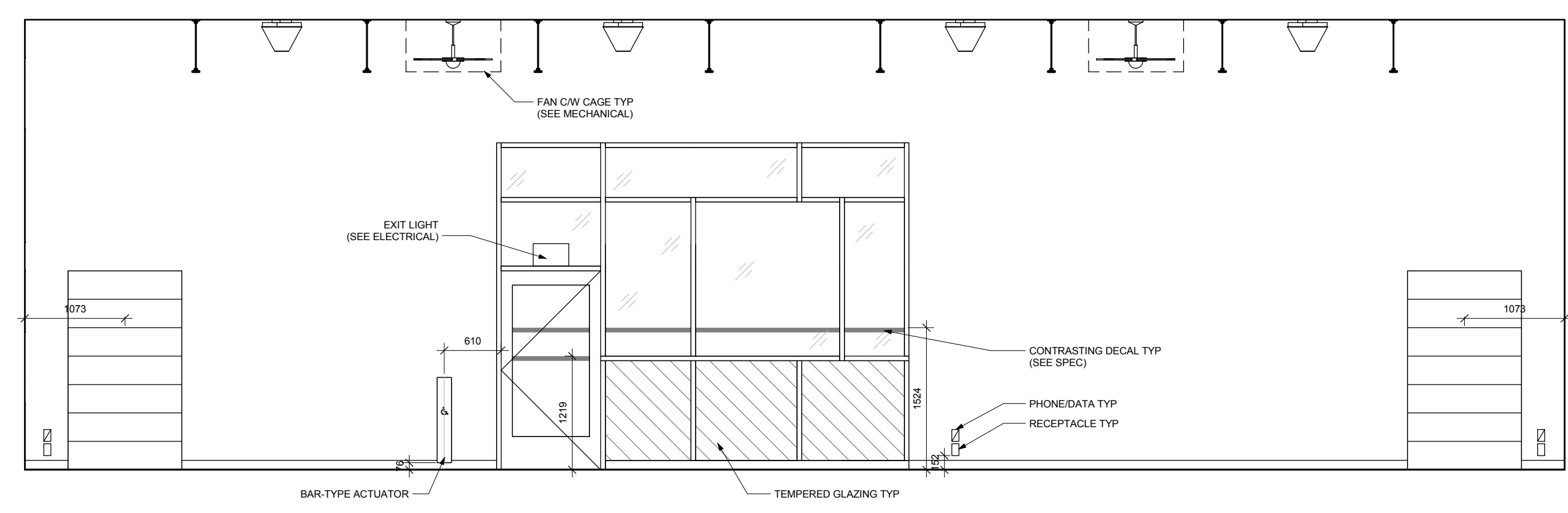
10 MPR 2 102 - b
 1:50



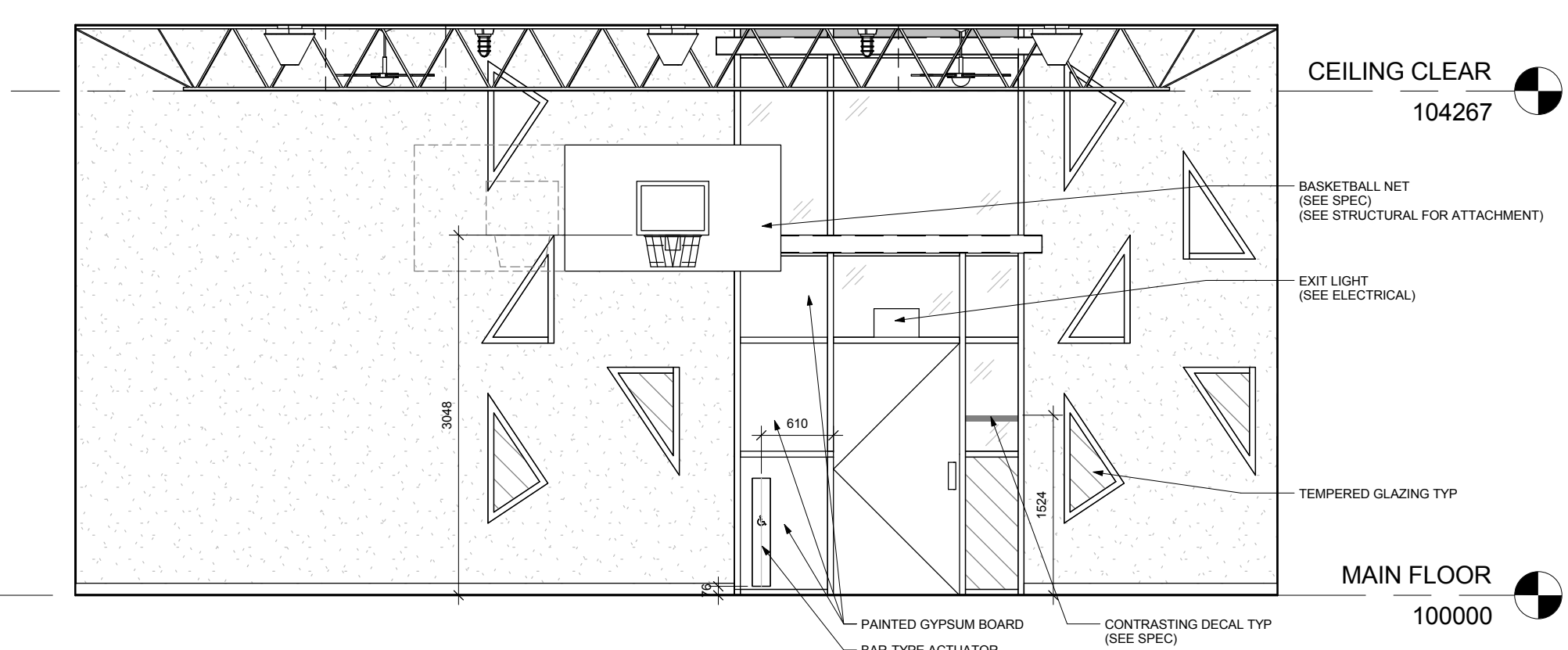
11 MPR 2 102 - c
 1:50



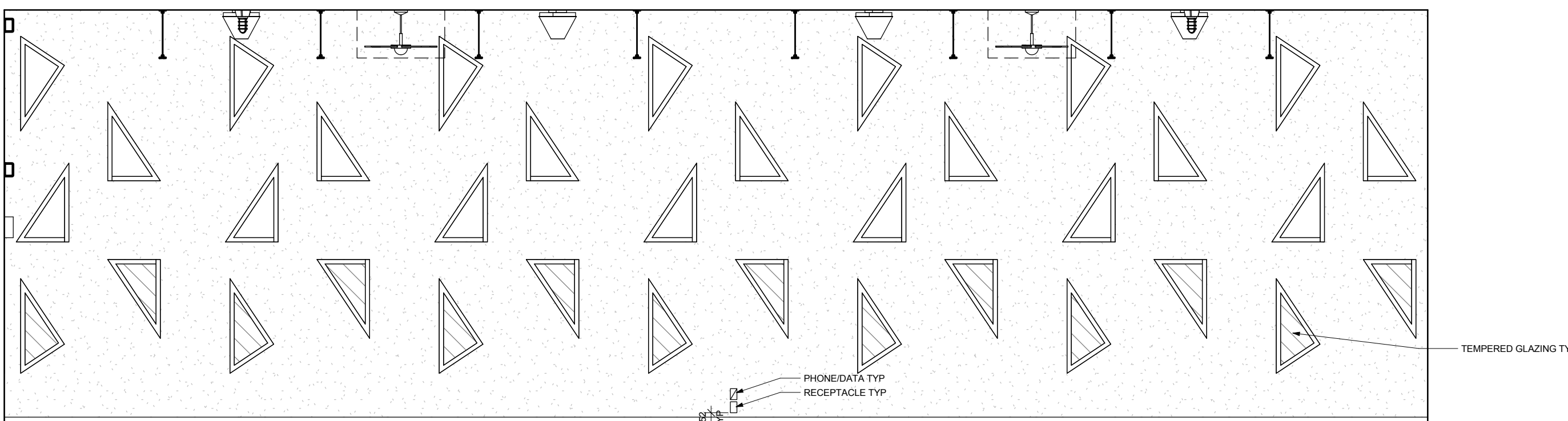
12 MPR 2 102 - d
 1:50



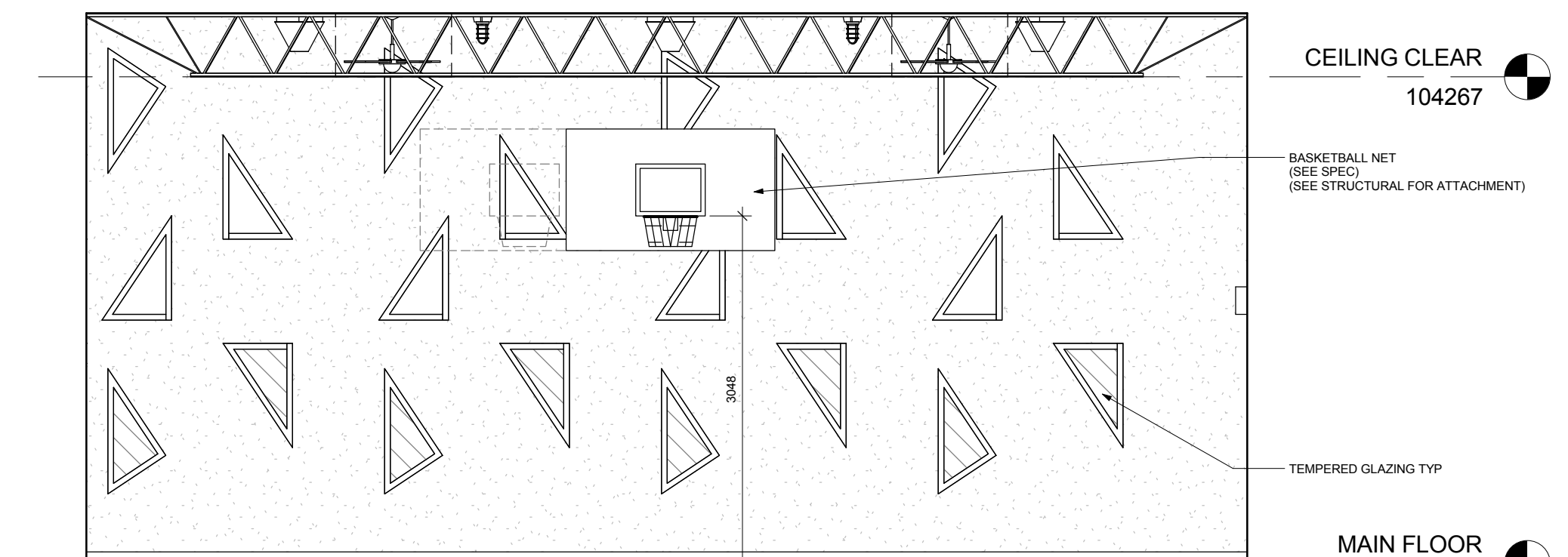
1 MPR 1 107 - a
 1:50



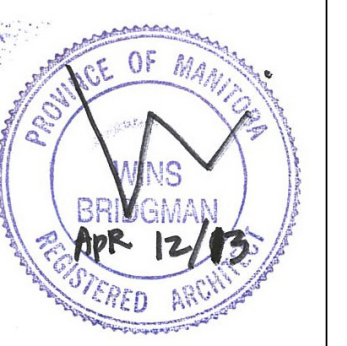
2 MPR 1 107 - b
 1:50



3 MPR 1 107 - c
 1:50



4 MPR 1 107 - d
 1:50



#	Issue/Revision	Date
1	66% REVIEW	AUG 16 2012
2	66% REISSUE REVIEW	NOV 26 2012
3	99% REVIEW	MAR 6 2013
4	ISSUED FOR TENDER	APR 12 2013