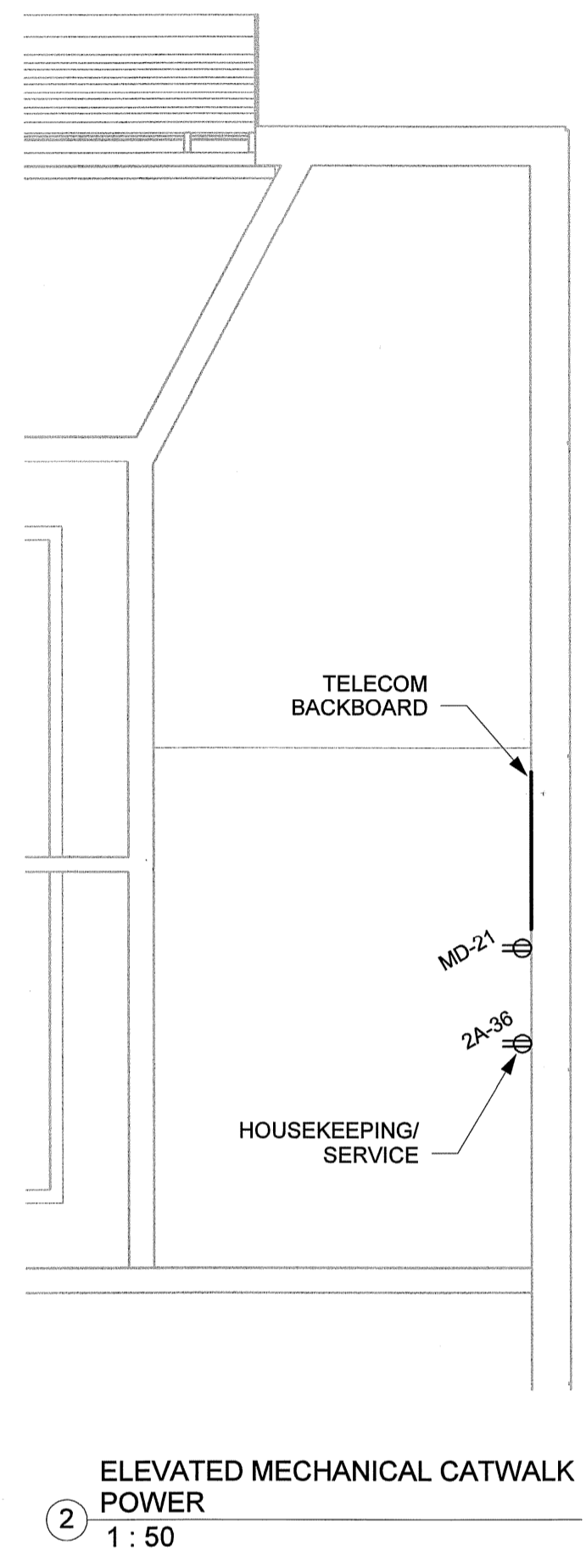


1 MAIN FLOOR POWER & SYSTEMS
 1 : 50

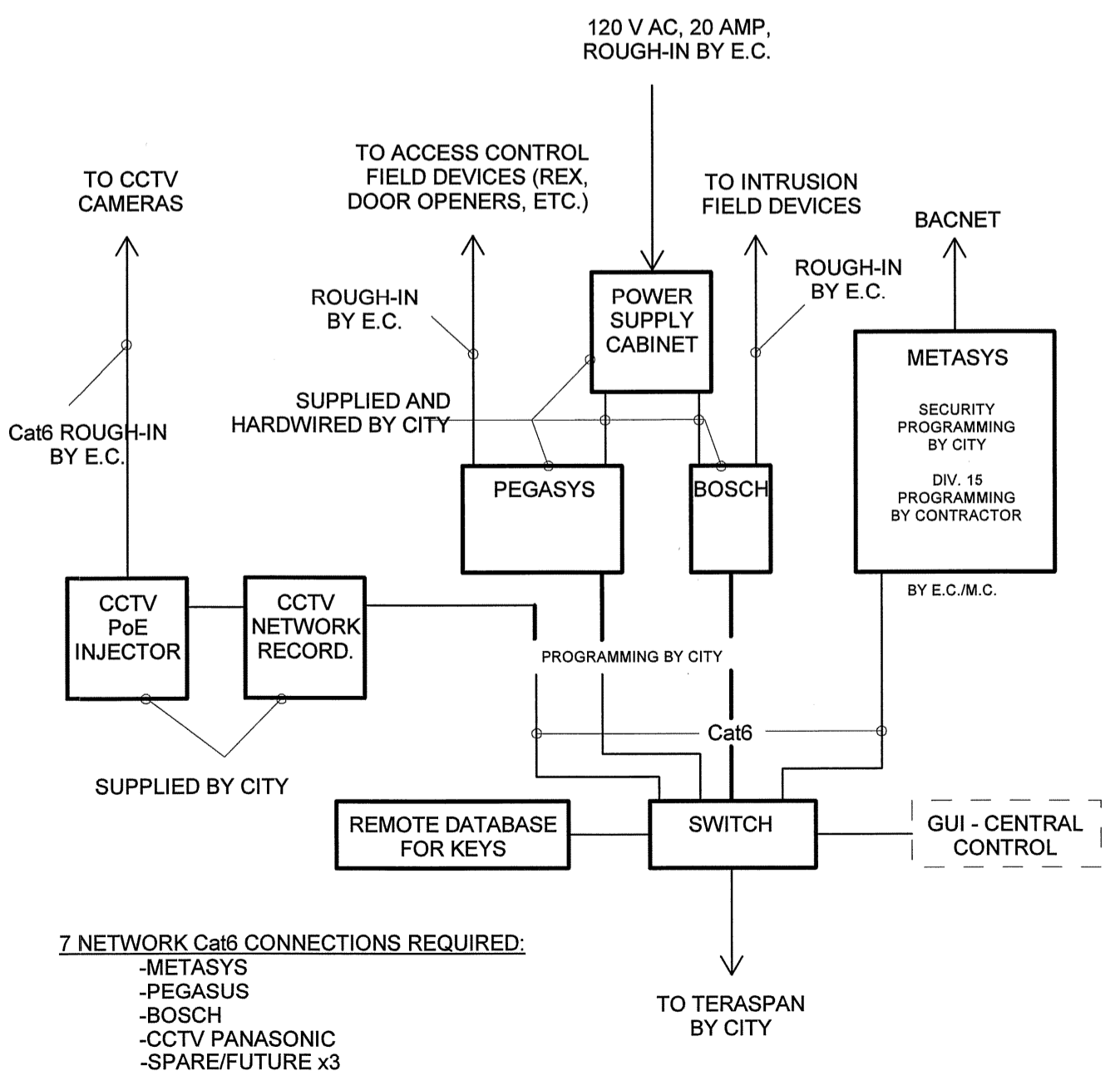
TRUE PROJECT



2

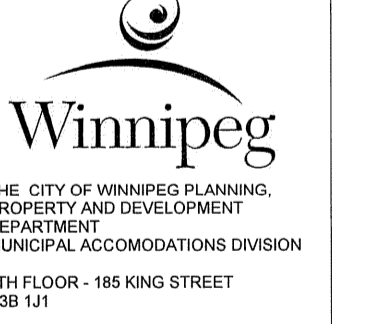
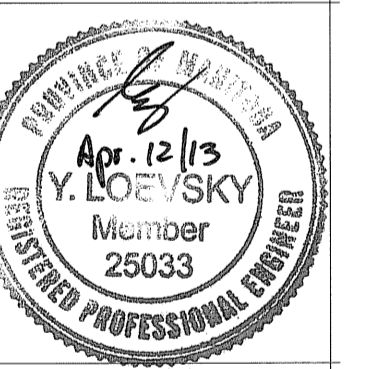
DRAWING NOTES:

- 1 MOUNT ALL MOTION DETECTORS AT 2286mm (7' 6") AFF. TYPICAL.
- 2 CW PROTECTIVE CAGE.
- 3 VOLTAGE SENSING RELAY TO MONITOR NIGHT LIGHT CIRCUIT.
- 4 PROVIDE TWO (2) 53mm (2") DIA EMT CONDUIT STUBOUTS AS PROVISIONS FOR EXTERIOR RINK LIGHTS TO NEW COMPLETION.
- 5 PROVIDE ONE (1) 27mm (1") DIA EMT CONDUIT, AND CONNECT EXISTING EXTERIOR RINK LIGHTS TO NEW DISTRIBUTION.
- 6 PROVIDE 120V ELECTRICAL CONNECTION TO FAUCET/FLUSH VALVE. PROVIDE 120/24V TRANSFORMER. ALL WIRING TO BE TAMPER PROOF.
- 7 PROVIDE WIKK INGRESSR MODEL # I36-5-US32D. TYPICAL ALL DOOR OPENERS.
- 8 REFER TO SPECIFICATION SECTION 27 05 15, ITEM 3.1.2 FOR RACK MODEL NUMBER.
- 9 PROVIDE TROUBLE PILOT LIGHTS AND CALL BUTTONS IN BOTH WASHROOMS. TYPICAL
- 10 REFER TO ARCHITECTURAL DETAILS 1, 2, 3 & 4 ON DRAWING A6.2 FOR EXACT RECEPTACLE HEIGHTS AND LOCATION.
- 11 INSTALL MANUAL SPEED SWITCHED FOR FAN CONTROL IN SERVERY RM 103, ADJACENT TO LIGHT SWITCHES. PROVIDE WIRE GUARDS FOR ALL FANS.
- 12 REFER TO ARCHITECTURAL PLAN A6.3, DETAIL 10 FOR TV INSTALLATION ELEVATION
- 13 REFER TO ARCHITECTURAL PLAN A1.0, AND A2.0 EXTERIOR RECEPTACLES ELEVATIONS. TYPICAL
- 14 PROVIDE A SERVICE RECEPTACLE ON THE ROOF. COORDINATE EXACT LOCATION WITH OWNER ON SITE.



3 IT/SECURITY SYSTEMS DIAGRAM
 NOT TO SCALE

7 NETWORK Cat6 CONNECTIONS REQUIRED:
 -METASYS
 -PEGASYS
 -BOSCH
 -CCTV PANASONIC
 -SPARE/FUTURE x3



Project:
Mayfair Recreation Centre
 Winnipeg, MB
 Project Number: 12131
 Bid Opportunity Number: 556-2012
 Drawing Title:
ELECTRICAL POWER & SYSTEMS PLAN

#	Issue/Revision	Date
1	60% REVIEW	2012-08-16
2	60% REVISION REVIEW	2012-11-26
3	95% REVIEW	2013-03-06
4	ISSUED FOR TENDER	2013-04-12

Sheet No: **E3.1**

This drawing is the property of the Architect and cannot be reproduced or used without the consent of the Architect. The contractor is responsible for checking and verifying all levels, and dimensions and shall report all discrepancies to the Architect and shall provide all necessary data to the contractor.