

MATCHLINE B

PLANTING NOTES:
 1. TREES IN SOD, MULCH OR PLANTING BEDS NOT INCLUDED IN CONTRACT. TREES IN CONCRETE PLANTERS ARE INCLUDED.
 3. TREES TO BE MIN. 3.0M FROM ALL LIGHT POLES, CATCH BASINS, DRAINS AND OTHER UTILITIES.
 2. REFER TO L-18 FOR PLANTING DETAILS

PLANT LIST - MAIN PARK

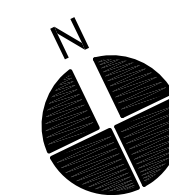
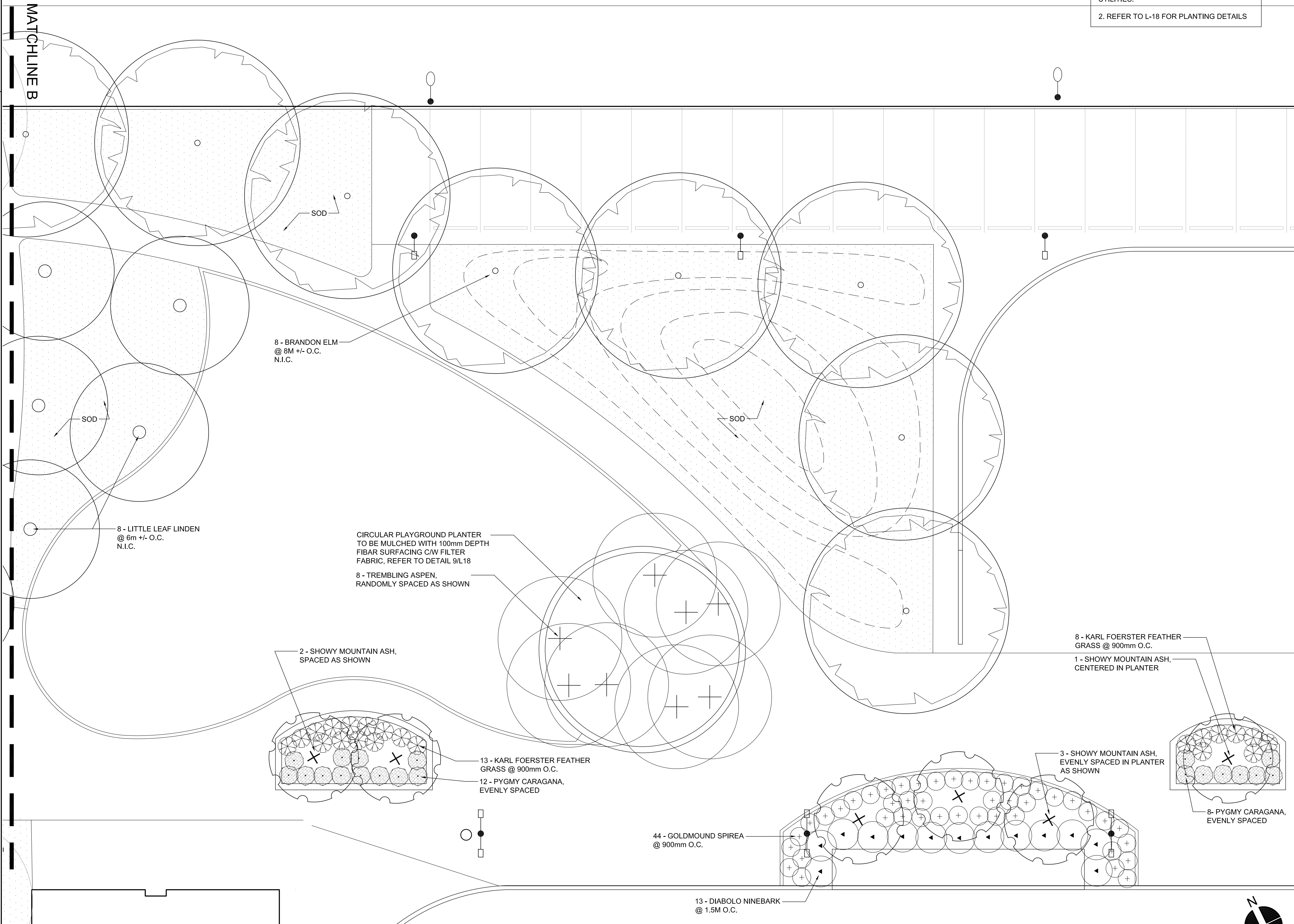
Symbol	Common Name/Botanical Name	Qty	Size and Remarks
Trees - Supply and install			
	Trembling Aspen / <i>Populus tremuloides</i>	8	50mm caliper min., 3000mm height min., 1000mm wide rootball straight trunk and balanced head.
	Amur Cherry / <i>Prunus maackii</i>	13	50mm caliper min., 3000mm height min., 1000mm wide rootball straight trunk and balanced head.
	Showy Mountain Ash / <i>Sorbus decora</i>	8	50mm caliper min., 3000mm height min., 1000mm wide rootball straight trunk and balanced head.
	Japanese Tree Lilac / <i>Syringia reticulata</i>	1	50mm caliper min., 3000mm height min., 1000mm wide rootball straight trunk and balanced head.
	Little Leaf Linden / <i>Tilia cordata</i>	7	75mm caliper, 3500mm height min., 1000mm wide rootball straight trunk and balanced head.
	Brandon Elm / <i>Ulmus americana 'Brandon'</i>	13	75mm caliper, 3700mm height min., 1000mm wide rootball straight trunk and balanced head.
Shrubs			
	Pygmy Caragana / <i>Caragana pygmaea</i>	76	400mm ht., min. 4 major basal branches. Well formed, bushy plants. Container stock.
	Dwarf Meyer Lilac / <i>Syringa meyeri 'Palibin'</i>	13	400mm ht., min. 4 major basal branches. Well formed, bushy plants. Container stock.
	Diablo Ninebark / <i>Physocarpus opulifolius 'Diablo'</i>	31	600 ht., min. 5 major basal branches. Well formed, bushy plants. Container stock.
	Goldmound Spirea / <i>Spiraea x bumalda 'Goldmound'</i>	110	400mm ht., min. 4 major basal branches. Well formed, bushy plants. Container stock.
Perennials			
	Karl Foerster Feather Grass / <i>Calamagrostis x acutiflora 'Karl Foerster'</i>	21	1 gal. potted plant, 2 years from division, no 1 grade, with developed with a vigorous root system.
	Virginia Creeper / <i>Parthenocissus quinquefolia</i>	28	1 gal. potted plant, 2 years from division, no 1 grade, with developed with a vigorous root system.

SURFACING - MAIN PARK

	Sod	958 sm	As per City of Winnipeg Specifications
	Granite Rip Rap	19 sm	Refer to Specification
	EnviroSod	18 sm	Refer to Specification
	Flagstone Planting Bed Surfacing	28 sm	Refer to Details 3/L-18 and Specification
	Bark Mulch Surfacing (tree area east of skatepark), 100mm depth	93 sm	Refer to Specification

PLANT LIST - EAST FIELD, Refer to L-03 N.I.C.

	Prairie Expedition Elm / <i>Ulmus americana 'Brandon'</i>	8	75mm caliper, 3700mm height min., 1000mm wide rootball straight trunk and balanced head.
--	---	---	--



NOTES:

REV	YY / MM / DD	DESCRIPTION	BY
1	12 / 08 / 16	ISSUED FOR TENDER	DKM
0	12 / 07 / 19	ISSUED FOR TENDER	DKM

A.	SECTION LETTER OR DETAIL NUMBER, B. DRAWING WHERE SECTION OR DETAIL IS DRAWN.
	OR
	A. DRAWING WHERE SECTION OR DETAIL IS INDICATED.
	--- SECTION OR DETAIL SHOWN ON SAME DRAWING.

SEAL

CLIENT

CITY OF WINNIPEG
 PLANNING, PROPERTY AND DEVELOPMENT DEPARTMENT
 300 - 65 GARRY ST. R3C 4K4

SCATIFF+MILLER+MURRAY INC.
 TEL 204 927-3444 FAX 204 927-3443
 1120 - 201 PORTAGE AVENUE WINNIPEG, MB, CANADA

PROJECT	KELVIN RECREATION SITE B.P.C.C.		
TITLE	PLANTING PLAN EAST		
DESIGN DKM/CD	DRAWN AH	DATE - Y / M / D 12/07/19	SCALE 1:100
CHECKED DKM	APPROVED DKM	PROJECT NO. 11-0107-22	DRAWING NO. L-17