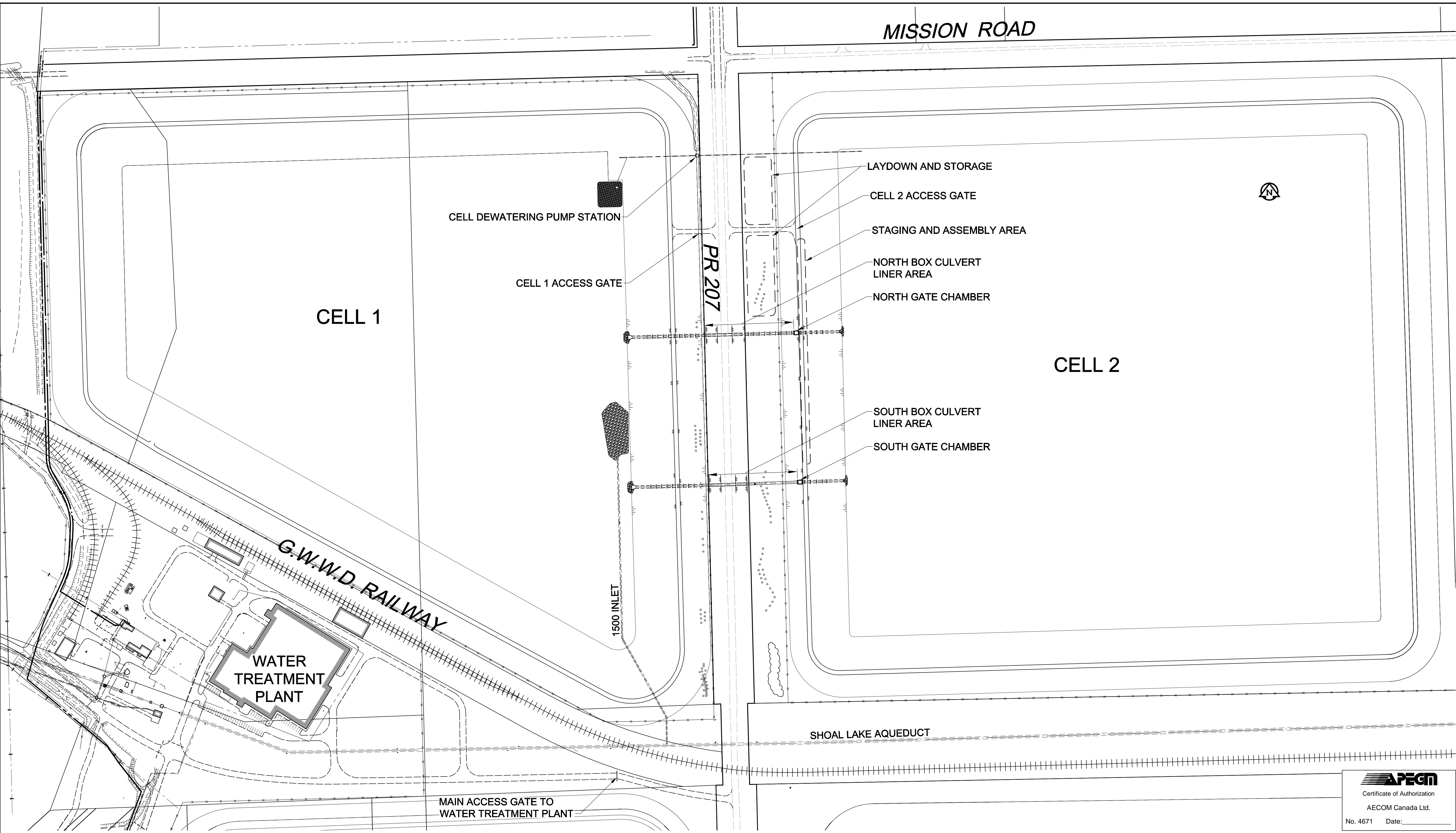


D SIZE 22" x 34" (559mm x 864mm)

PLOT: 7/17/2012 9:08:54 AM

AECOM REVIEW DRFT CHK  
AECOM FILE NAME: 60195708-00-C-101-R0X.dwg Saved By: jlpjpl



**AECOM**  
Certificate of Authorization  
AECOM Canada Ltd.  
No. 4671 Date:

BID OPPORTUNITY NO. 567-2012

EXISTING	LEGEND - PLAN	NEW	EXISTING	LEGEND - PLAN	NEW	EXISTING	LEGEND - PROFILE	NEW
○	150 WM HYDRANT	●	○	150 WM HYDRANT	●	+	150 WM HYDRANT	+
⊙	300 LDS VALVE	⊙	⊙	300 LDS VALVE	⊙	X	300 LDS VALVE	X
○	250 WWS LAND DRAINAGE SEWER	○	○	250 WWS LAND DRAINAGE SEWER	○	---	250 WWS LAND DRAINAGE SEWER	---
○	250 WWS WASTE WATER SEWER	○	○	250 WWS WASTE WATER SEWER	○	---	250 WWS WASTE WATER SEWER	---
○	MANHOLE	●	○	MANHOLE	●	---	MANHOLE	---
○	CATCH BASIN	■	○	CATCH BASIN	■	---	CATCH BASIN	---
○	CURB INLET	▲	○	CURB INLET	▲	---	CURB INLET	---
---	CULVERT	---	---	CULVERT	---	---	CULVERT	---
---	PIPE ABANDONMENTS	---	---	PIPE ABANDONMENTS	---	---	PIPE ABANDONMENTS	---
---	SURVEY BAR	---	---	SURVEY BAR	---	---	SURVEY BAR	---
---	CURB STOP	---	---	CURB STOP	---	---	CURB STOP	---
---	REDUCER	---	---	REDUCER	---	---	REDUCER	---
---	COUPLING	---	---	COUPLING	---	---	COUPLING	---
---	ANODE	---	---	ANODE	---	---	ANODE	---
---	HYDRO	---	---	HYDRO	---	---	HYDRO	---
---	MTS	---	---	MTS	---	---	MTS	---
---	GAS	---	---	GAS	---	---	GAS	---
---	TESTHOLE	---	---	TESTHOLE	---	---	TESTHOLE	---
---	LAMP STANDARD	---	---	LAMP STANDARD	---	---	LAMP STANDARD	---
---	TREE	---	---	TREE	---	---	TREE	---

**LOCATION APPROVED UNDERGROUND STRUCTURES**  
SUPR. U/G STRUCTURES DATE COMMITTEE  
NOTE: LOCATION OF UNDERGROUND STRUCTURES AS SHOWN ARE BASED ON THE BEST INFORMATION AVAILABLE. BUT NO GUARANTEE IS GIVEN THAT ALL EXISTING UTILITIES ARE SHOWN OR THAT THE GIVEN LOCATIONS ARE EXACT. CONFIRMATION OF EXISTENCE AND EXACT LOCATION OF ALL SERVICES MUST BE OBTAINED FROM THE INDIVIDUAL UTILITIES BEFORE PROCEEDING WITH CONSTRUCTION.

NO.	REVISIONS	DATE	BY
0	ISSUED FOR CONSTRUCTION	12/07/16	ADL

<b>AECOM</b>			
DESIGNED BY	MGM	CHECKED BY	C.C.M
DRAWN BY	AD	APPROVED BY	C.C.M
HOR. SCALE	1:2000	RELEASED FOR CONSTRUCTION ORIGINAL SIGNED BY	R. SOROKOWSKI
VERT. SCALE	NA	DATE	JULY 16, 2012

PROFESSIONAL'S SEAL  
REVISION 0  
ISSUED FOR CONSTRUCTION  
WAS SEALED BY  
C.C. MACEY  
AND DATED  
12/07/16  
CONSULTANT DRAWING NO.  
60195708-00-C-101-R0X.dwg

**THE CITY OF WINNIPEG**  
Winnipeg  
**WATER AND WASTE DEPARTMENT**

**CITY OF WINNIPEG**  
**DEACON RESERVOIR INTERCONNECTOR**  
**CULVERT REHABILITATION**  
LOCATION AND STAGING PLAN

SHEET 2 OF 7  
DRAWING NUMBER  
1-0620M-C0002-001  
REV 0