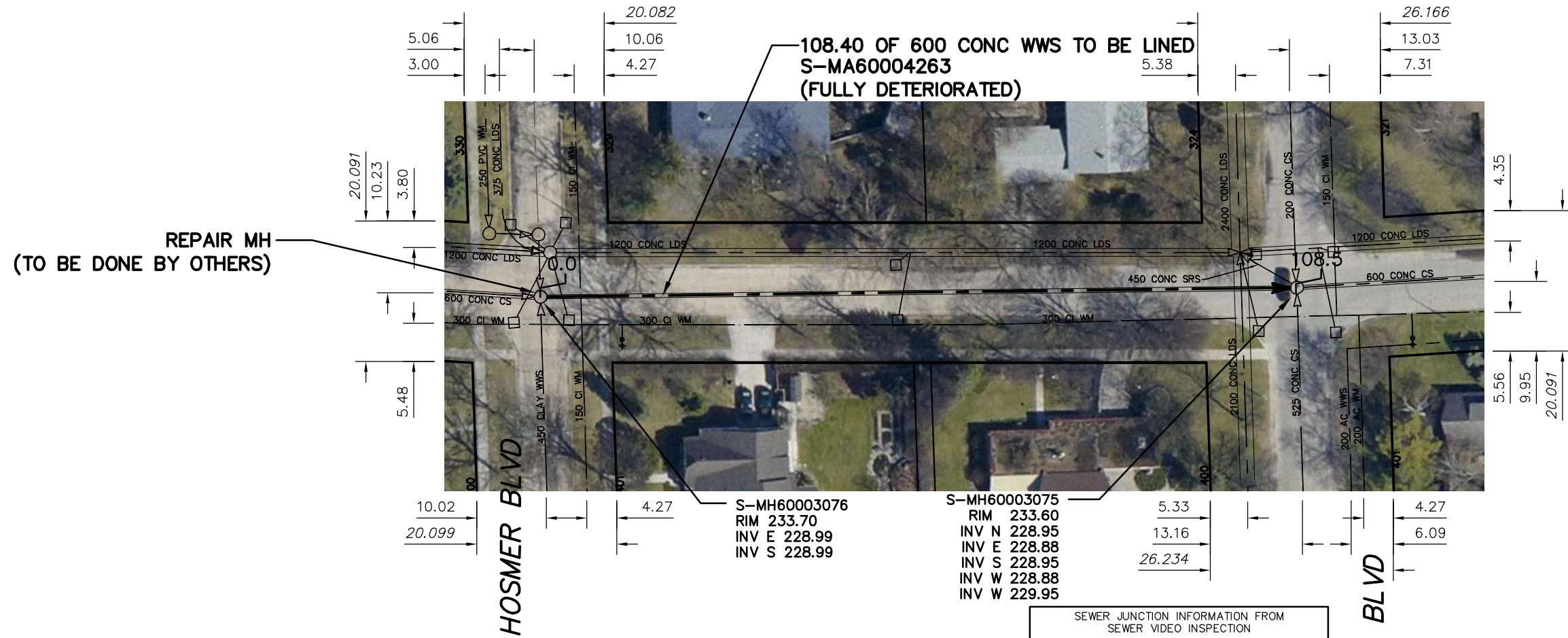
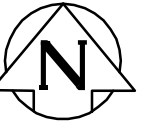


CUTHBERTSON AVENUE



**REPAIR MH
(TO BE DONE BY OTHERS)**

**108.40 OF 600 CONC WWS TO BE LINED
S-MA60004263
(FULLY DETERIORATED)**

S-MH60003076
RIM 233.70
INV E 228.99
INV S 228.95

S-MH60003075
RIM 233.60
INV N 228.95
INV E 228.88
INV S 228.95
INV W 228.88
INV W 229.95

SEWER JUNCTION INFORMATION FROM SEWER VIDEO INSPECTION		
SEWER ID S-MA60004263		
DISTANCE FROM MH ID S-MH60003076		
DISTANCE	DIAMETER	CLOCK
10.7	150	1
81.1	150	12

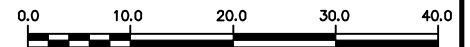
WARNING

IF POWER EQUIPMENT OR EXPLOSIVES ARE TO BE USED FOR EXCAVATION ON THIS PROJECT THE CONTRACTOR MUST:

- 1) NOTIFY THE GAS COMPANY OF THE PROPOSED LOCATION OF EXCAVATION.
- 2) TAKE PRECAUTION TO AVOID DAMAGE TO GAS COMPANY INSTALLATIONS.

SEE PROVINCIAL REGULATION 210/72 FOR DETAILS

METRIC
WHOLE NUMBERS INDICATE MILLIMETRES
DECIMALIZED NUMBERS INDICATE METRES



LOCATION APPROVED
UNDERGROUND STRUCTURES

SUPV. U/G STRUCTURES COMMITTEE DATE

NOTE:

LOCATION OF UNDERGROUND STRUCTURES AS SHOWN ARE BASED ON THE BEST INFORMATION AVAILABLE BUT NO GUARANTEE IS GIVEN THAT ALL EXISTING UTILITIES ARE SHOWN OR THAT THE GIVEN LOCATIONS ARE EXACT. CONFIRMATION OF EXISTENCE AND EXACT LOCATION OF ALL SERVICES MUST BE OBTAINED FROM THE INDIVIDUAL UTILITIES BEFORE PROCEEDING WITH CONSTRUCTION.

B.M.
ELEV.

CONSTRUCTION COMPLETION DATE: YYYY MM DD

NO.	REVISIONS	DATE	BY

DESIGNED BY	SC	CHECKED BY	SC
DRAWN BY	RS	APPROVED BY	KZ
SCALE:	1:750	RELEASED FOR CONSTRUCTION	
HORIZONTAL			
VERTICAL			
DATE	2012 08 17	DATE	
PLOT DATE:	2012 08 17		

ENGINEER'S SEAL

ORIGINAL SIGNED BY
S.R.J. COURNOYER
AUG. 15, 2012

CONSULTANT DRAWING NUMBER

BID OPPORTUNITY: ??-????
CONTRACT NUMBER: ??



THE CITY OF WINNIPEG
WATER AND WASTE DEPARTMENT
ENGINEERING DIVISION

2012 SEWER RENEWALS
BY CIPP LINING
CUTHBERTSON AVENUE
MH AT HOSMER BOULEVARD TO
MH AT PARK BOULEVARD N

SHEET 6 OF 57

CITY DRAWING NUMBER

10279

FILE PATH: R:\DRAWINGS\SEWER\2012_RENEWALS\CIPP, TPR, and EPR\CONTRACT 10\CIPP LINING\CUTHBERTSON.dwg