

92.90 OF 600 CONC CS
TO BE LINED S-MA70040630
(FULLY DETERIORATED)

LODGE AVENUE



VERNON RD

STRATHMILLAN RD

FOR CONTINUATION
SEE DWG 10321

S-MH70016257
RIM
INV E
INV W

S-MH20005084
RIM 236.20
INV N 231.08
INV E 231.08
INV S 231.08
INV W 231.08

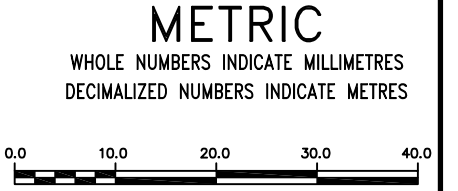
SEWER JUNCTION INFORMATION FROM SEWER VIDEO INSPECTION		
SEWER ID S-MA70040630		
DISTANCE FROM MH ID S-MH20005084		
DISTANCE	DIAMETER	CLOCK
12.4	150	11
30.3	150	1
34.6	150	10
48.6	150	10
88.0	150	12

WARNING

IF POWER EQUIPMENT OR EXPLOSIVES ARE TO BE USED FOR EXCAVATION ON THIS PROJECT THE CONTRACTOR MUST:

- 1) NOTIFY THE GAS COMPANY OF THE PROPOSED LOCATION OF EXCAVATION.
- 2) TAKE PRECAUTION TO AVOID DAMAGE TO GAS COMPANY INSTALLATIONS.

SEE PROVINCIAL REGULATION 210/72 FOR DETAILS



LOCATION APPROVED
UNDERGROUND STRUCTURES

SUPV. U/G STRUCTURES COMMITTEE _____ DATE _____

NOTE:
LOCATION OF UNDERGROUND STRUCTURES AS SHOWN ARE BASED ON THE BEST INFORMATION AVAILABLE BUT NO GUARANTEE IS GIVEN THAT ALL EXISTING UTILITIES ARE SHOWN OR THAT THE GIVEN LOCATIONS ARE EXACT. CONFIRMATION OF EXISTENCE AND EXACT LOCATION OF ALL SERVICES MUST BE OBTAINED FROM THE INDIVIDUAL UTILITIES BEFORE PROCEEDING WITH CONSTRUCTION.

B.M. ELEV.	
CONSTRUCTION COMPLETION DATE: YYYY MM DD	
NO.	REVISIONS
	DATE
	BY

DESIGNED BY	SC	CHECKED BY	SC
DRAWN BY	JB	APPROVED BY	KZ
SCALE:		RELEASED FOR CONSTRUCTION	
HORIZONTAL	1: 750		
VERTICAL			
DATE	2012 09 10	DATE	

ENGINEER'S SEAL

ORIGINAL SIGNED BY
S.R.J. COURNOYER
AUG. 15, 2012

CONSULTANT DRAWING NUMBER
-

THE CITY OF WINNIPEG
WATER AND WASTE DEPARTMENT
ENGINEERING DIVISION

**2012 SEWER RENEWALS
BY CIPP LINING
LODGE AVENUE
MH AT VERNON ROAD (CL) TO
MH AT STRATHMILLAN ROAD**

SHEET **23** OF **57**
CITY DRAWING NUMBER
10295