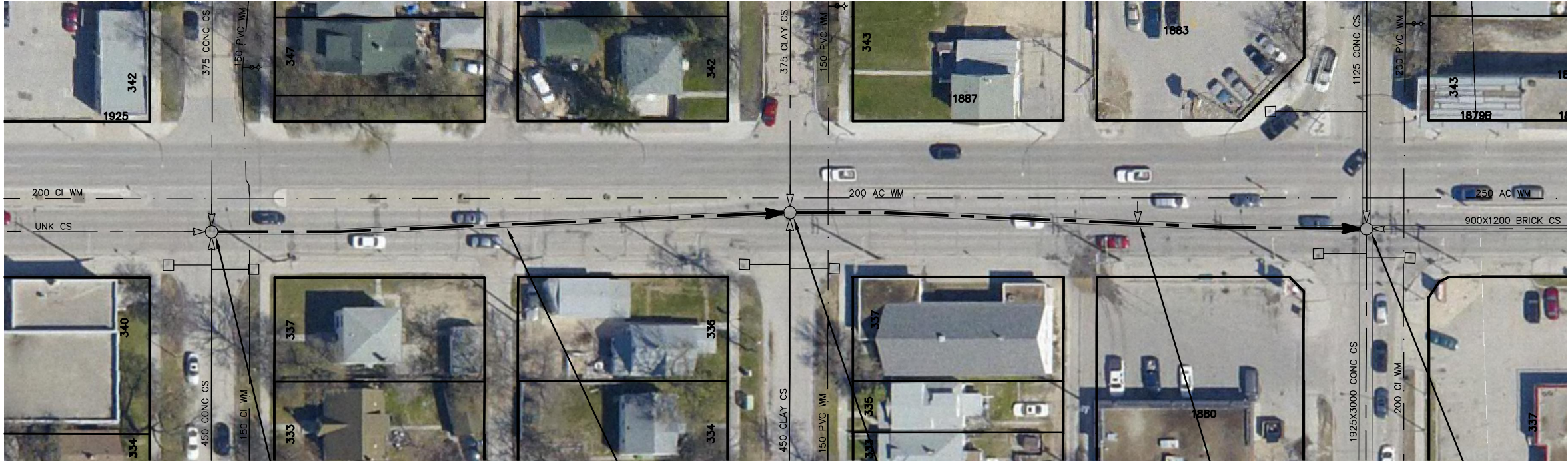


NESS AVENUE



RUTLAND ST

S-MH20007320
RIM 234.97
INV N 227.98
INV E 228.11
INV S 227.98

84.20 OF 800X1200 BRICK CS
TO BE LINED S-MA20007984
(FULLY DETERIORATED)

INGLEWOOD ST

S-MH20007319
RIM 234.77
INV N 227.95
INV E 227.95
INV S 227.95
INV W 227.98

83.60 OF 800X1200 BRICK CS
TO BE LINED S-MA20007983
(FULLY DETERIORATED)

FERRY ROAD

S-MH20007331
RIM 235.33
INV N 227.20
INV E 227.20
INV S 227.20
INV W 227.20

WARNING

IF POWER EQUIPMENT OR EXPLOSIVES ARE TO BE USED FOR EXCAVATION ON THIS PROJECT THE CONTRACTOR MUST:

- 1) NOTIFY THE GAS COMPANY OF THE PROPOSED LOCATION OF EXCAVATION.
- 2) TAKE PRECAUTION TO AVOID DAMAGE TO GAS COMPANY INSTALLATIONS.

SEE PROVINCIAL REGULATION 210/72 FOR DETAILS

SEWER JUNCTION INFORMATION FROM SEWER VIDEO INSPECTION
SEWER ID S-MA20007984

| DISTANCE | DIAMETER | CLOCK |
|----------|----------|-------|
| 6.9 | 300 | 3 |
| 45.1 | 100 | 1 |
| 77.1 | 250 | 11 |
| 80.5 | 250 | 1 |

SEWER JUNCTION INFORMATION FROM SEWER VIDEO INSPECTION
SEWER ID S-MA20007983

| DISTANCE | DIAMETER | CLOCK |
|----------|----------|-------|
| 7.8 | 200 | 2 |
| 8.2 | 200 | 10 |
| 35.0 | 200 | 1 |
| 44.8 | 200 | 1 |
| 61.7 | 200 | 11 |
| 62.6 | 200 | 1 |

METRIC

WHOLE NUMBERS INDICATE MILLIMETRES
DECIMALIZED NUMBERS INDICATE METRES



LOCATION APPROVED
UNDERGROUND STRUCTURES

SUPV. U/G STRUCTURES COMMITTEE DATE

NOTE:

LOCATION OF UNDERGROUND STRUCTURES AS SHOWN ARE BASED ON THE BEST INFORMATION AVAILABLE BUT NO GUARANTEE IS GIVEN THAT ALL EXISTING UTILITIES ARE SHOWN OR THAT THE GIVEN LOCATIONS ARE EXACT. CONFIRMATION OF EXISTENCE AND EXACT LOCATION OF ALL SERVICES MUST BE OBTAINED FROM THE INDIVIDUAL UTILITIES BEFORE PROCEEDING WITH CONSTRUCTION.

| B.M. ELEV. | | CONSTRUCTION COMPLETION DATE: YYYY MM DD | |
|------------|-----------|--|----|
| NO. | REVISIONS | DATE | BY |
| | | | |
| | | | |
| | | | |
| | | | |
| | | | |

| | | | |
|-------------|------------|---------------------------|----|
| DESIGNED BY | SC | CHECKED BY | SC |
| DRAWN BY | JB | APPROVED BY | KZ |
| SCALE: | 1:750 | RELEASED FOR CONSTRUCTION | |
| HORIZONTAL | | | |
| VERTICAL | | | |
| DATE | 2012 08 17 | DATE | |
| PLOT DATE: | 2012 08 17 | | |

ENGINEER'S SEAL

ORIGINAL SIGNED BY
S.R.J. COURNOYER
AUG. 15, 2012

CONSULTANT DRAWING NUMBER

BID OPPORTUNITY: ??-????
CONTRACT NUMBER: ??



THE CITY OF WINNIPEG
WATER AND WASTE DEPARTMENT
ENGINEERING DIVISION

2012 SEWER RENEWALS
BY CIPP LINING

NESS AVENUE
MH AT RUTLAND STREET TO
MH AT FERRY ROAD

SHEET 29 OF 57

CITY DRAWING NUMBER

10301

FILE PATH: R:\DRAWINGS\SEWER\2012_RENEWALS\CIPP, TPR, and EPR\CONTRACT 10\CIPP LINING\
FILE NAME: NESS.dwg