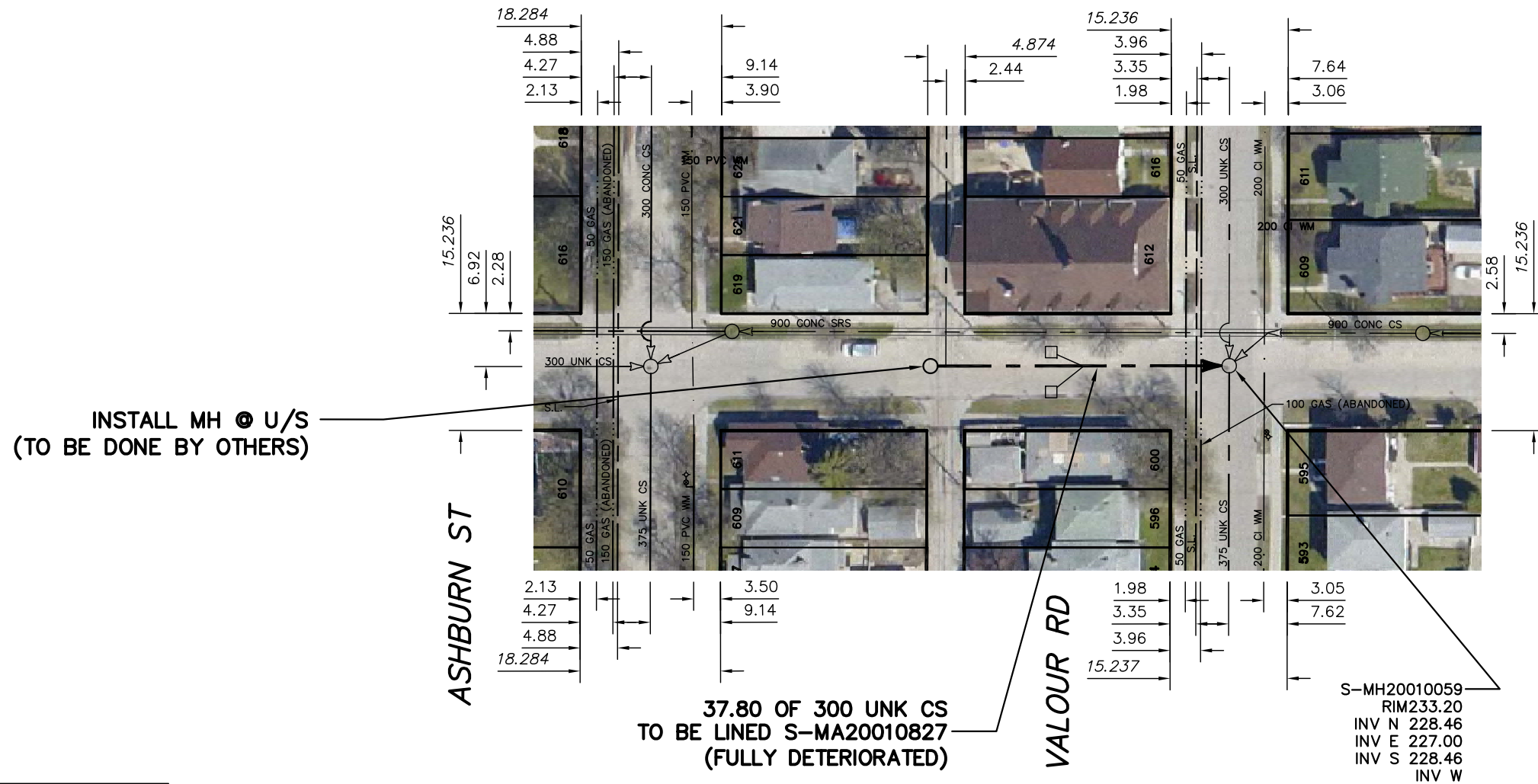


RIDDLE AVENUE



SEWER JUNCTION INFORMATION FROM SEWER VIDEO INSPECTION		
SEWER ID S-MA20010827		
DISTANCE FROM MH ID S-MH20010059		
DISTANCE	DIAMETER	CLOCK

WARNING

IF POWER EQUIPMENT OR EXPLOSIVES ARE TO BE USED FOR EXCAVATION ON THIS PROJECT THE CONTRACTOR MUST:

- 1) NOTIFY THE GAS COMPANY OF THE PROPOSED LOCATION OF EXCAVATION.
- 2) TAKE PRECAUTION TO AVOID DAMAGE TO GAS COMPANY INSTALLATIONS.

SEE PROVINCIAL REGULATION 210/72 FOR DETAILS

METRIC
WHOLE NUMBERS INDICATE MILLIMETRES
DECIMALIZED NUMBERS INDICATE METRES



LOCATION APPROVED UNDERGROUND STRUCTURES SUPV. U/G STRUCTURES COMMITTEE _____ DATE _____ NOTE: LOCATION OF UNDERGROUND STRUCTURES AS SHOWN ARE BASED ON THE BEST INFORMATION AVAILABLE BUT NO GUARANTEE IS GIVEN THAT ALL EXISTING UTILITIES ARE SHOWN OR THAT THE GIVEN LOCATIONS ARE EXACT. CONFIRMATION OF EXISTENCE AND EXACT LOCATION OF ALL SERVICES MUST BE OBTAINED FROM THE INDIVIDUAL UTILITIES BEFORE PROCEEDING WITH CONSTRUCTION.	B.M. ELEV. _____ CONSTRUCTION COMPLETION DATE: YYYY MM DD _____	ENGINEER'S SEAL ORIGINAL SIGNED BY S.R.J. COURNOYER AUG. 15, 2012		 THE CITY OF WINNIPEG WATER AND WASTE DEPARTMENT ENGINEERING DIVISION 2012 SEWER RENEWALS BY CIPP LINING RIDDLE AVENUE NODE W OF VALOUR ROAD (AT LANE) TO MH AT VALOUR ROAD	SHEET 37 OF 57 CITY DRAWING NUMBER						
	<table border="1"> <tr> <th>NO.</th> <th>REVISIONS</th> <th>DATE</th> <th>BY</th> </tr> <tr> <td> </td> <td> </td> <td> </td> <td> </td> </tr> </table>	NO.	REVISIONS		DATE	BY					DESIGNED BY SC CHECKED BY SC DRAWN BY JB APPROVED BY KZ SCALE: HORIZONTAL 1:750 VERTICAL _____ RELEASED FOR CONSTRUCTION _____
NO.	REVISIONS	DATE	BY								