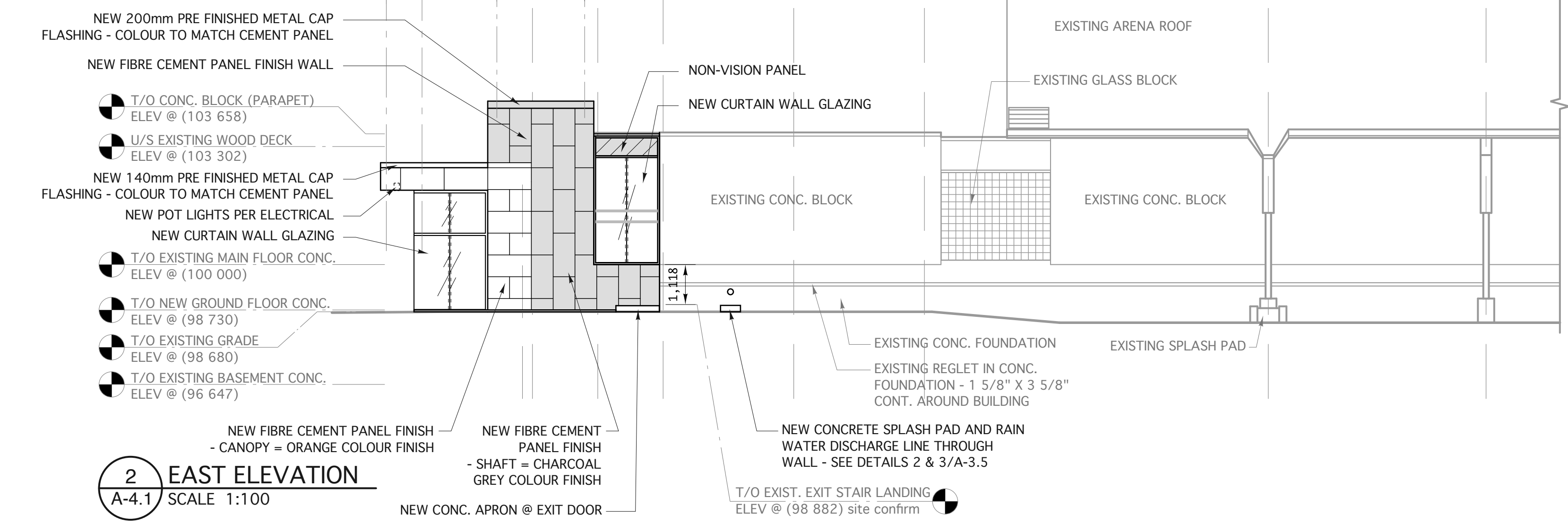
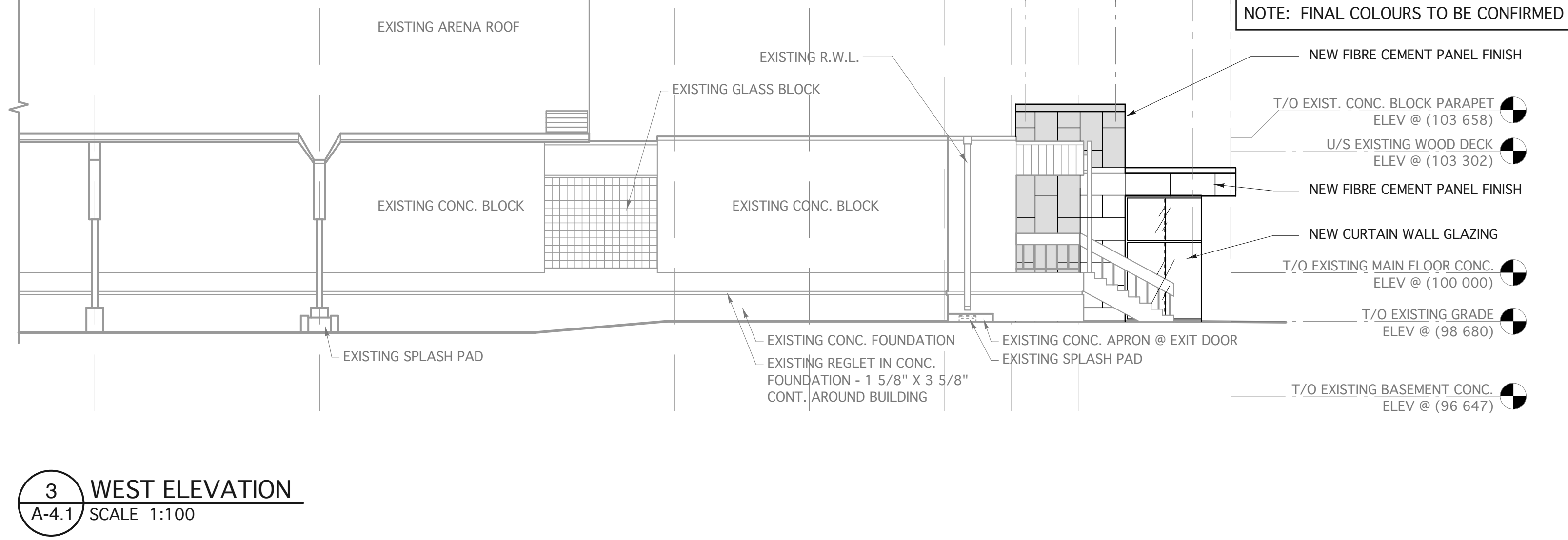


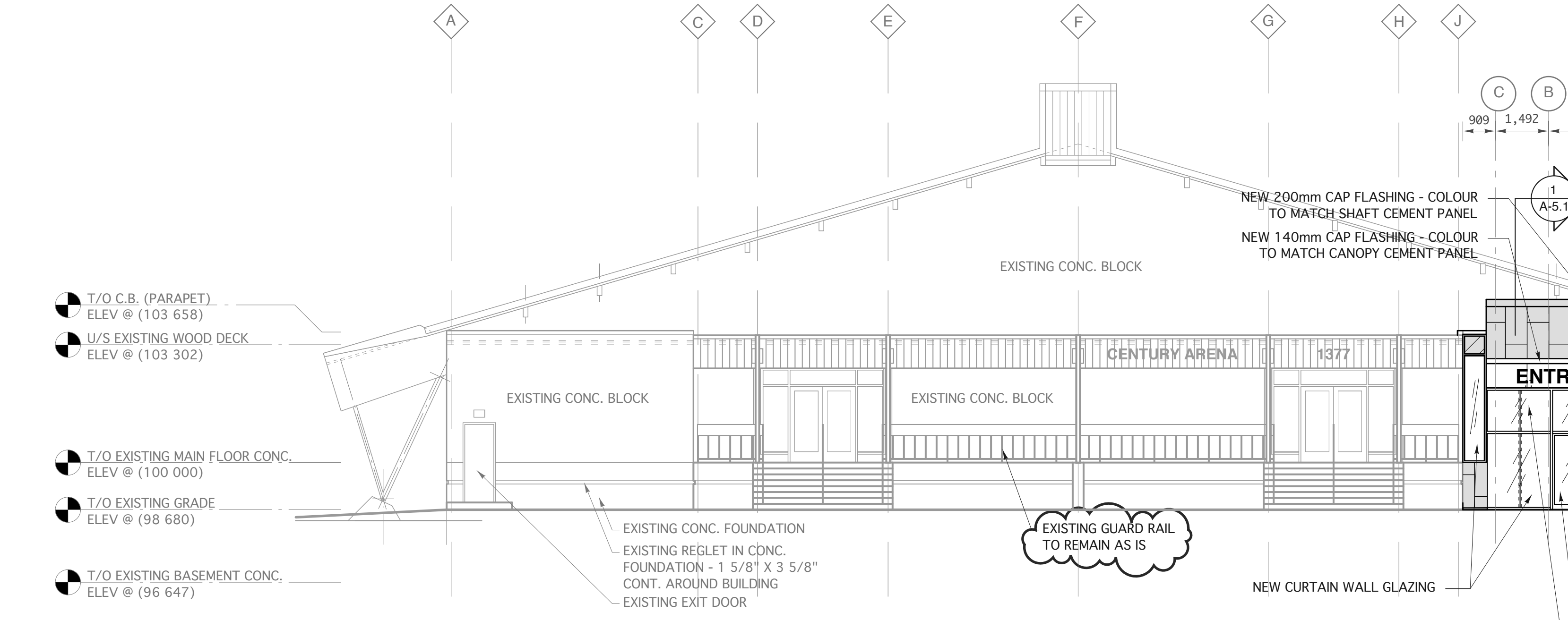
NOTE: FINAL COLOURS TO BE CONFIRMED



2 EAST ELEVATION  
A-4.1 SCALE 1:100

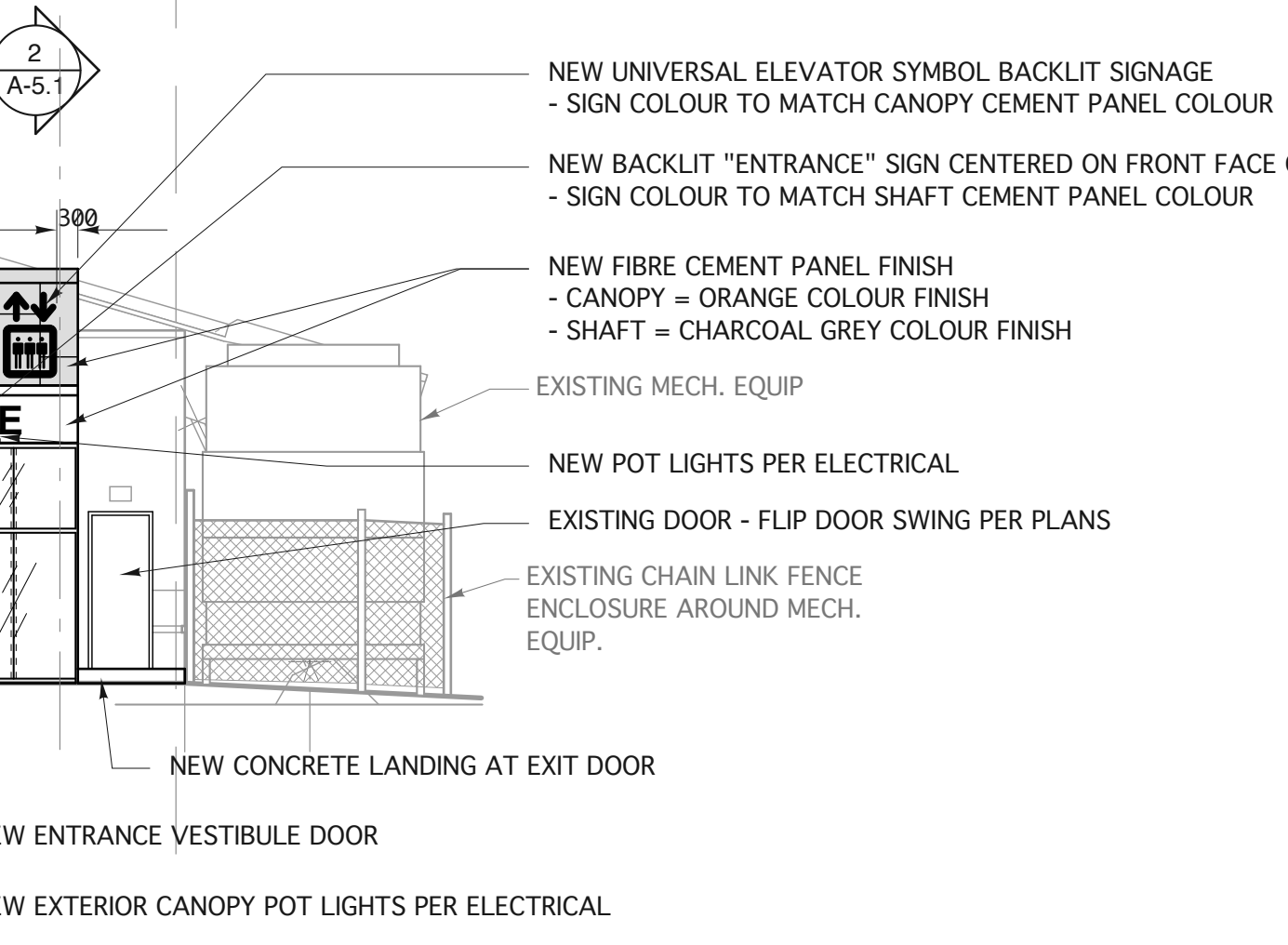


3 WEST ELEVATION  
A-4.1 SCALE 1:100



1 SOUTH ELEVATION  
A-4.1 SCALE 1:100

NOTE: FINAL COLOURS TO BE CONFIRMED



6 ELEVATOR SIGN DETAIL  
A-4.1 SCALE 1:50

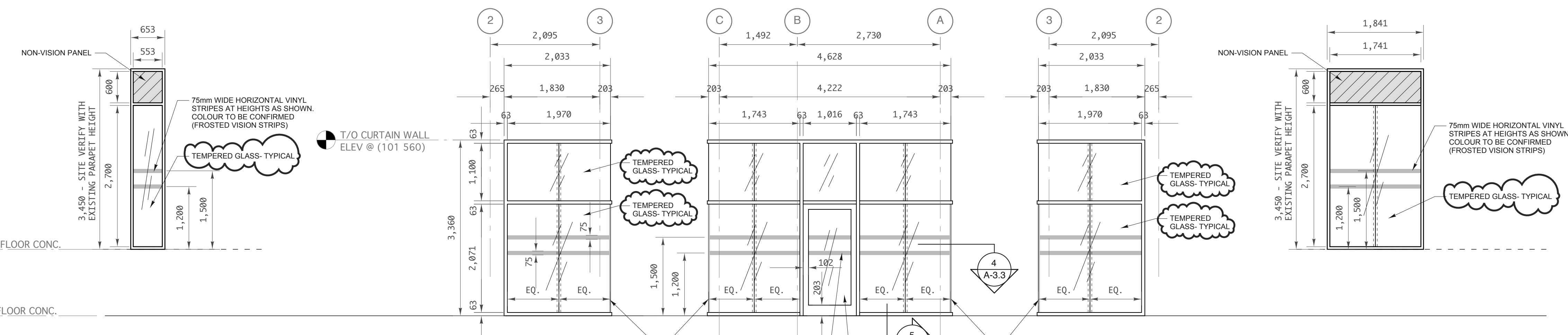
NOTE: ALL REVISION CHANGES ARE CIRCLED WITH A CLOUD.

1 ISSUED FOR ADDENDUM 3 DEC 6, 2012  
0 ISSUED FOR BID SEPT. 28, 2012  
revision

This drawing must not be scaled.  
The general Contractor must verify all dimensions, datums and levels prior to commencement of work. All errors and omissions must be reported immediately to the Architect.  
Variations and modifications to work shown on this drawing shall not be carried out without written permission from the Architect.  
This drawing is the exclusive property of the Architect and cannot be reproduced without written permission of the Architect. Reproduction must bear the name of the Architect. Copyright © 2012.

ORIGINAL DRAWINGS SEALED  
SEPTEMBER 28, 2012

GENERAL NOTES:  
- ALL NEW CURTAINWALL TO BE KAWNEER 1600 SYSTEM 2 OR APPROVED EQUIVALENT.  
- USE TEMPERED GLASS ON ALL EXTERIOR GLAZING



4 WINDOW SCHEDULE  
A-4.1 SCALE 1:50

harold funk architect inc.  
Harold Funk Architect Inc.  
Architecture and Urban Design  
401-55 Donald Street, Winnipeg, Manitoba R3C 1L8  
T (204) 943-5087 info@funkarchitect.com  
F (204) 943-9231 funkarchitect.com

project  
ELEVATOR ADDITION AND ACCESSIBILITY UPGRADES OF CENTURY ARENA  
Winnipeg, Manitoba Bid Opportunity No. 579-2012  
sheet title  
BUILDING ELEVATIONS

project number: 12-003 drawing number:  
scale: 1:100 or AS SHOWN A-4.1  
drawn by: C.G.  
approved by: H.F.  
date: SEPT. 28, 2012