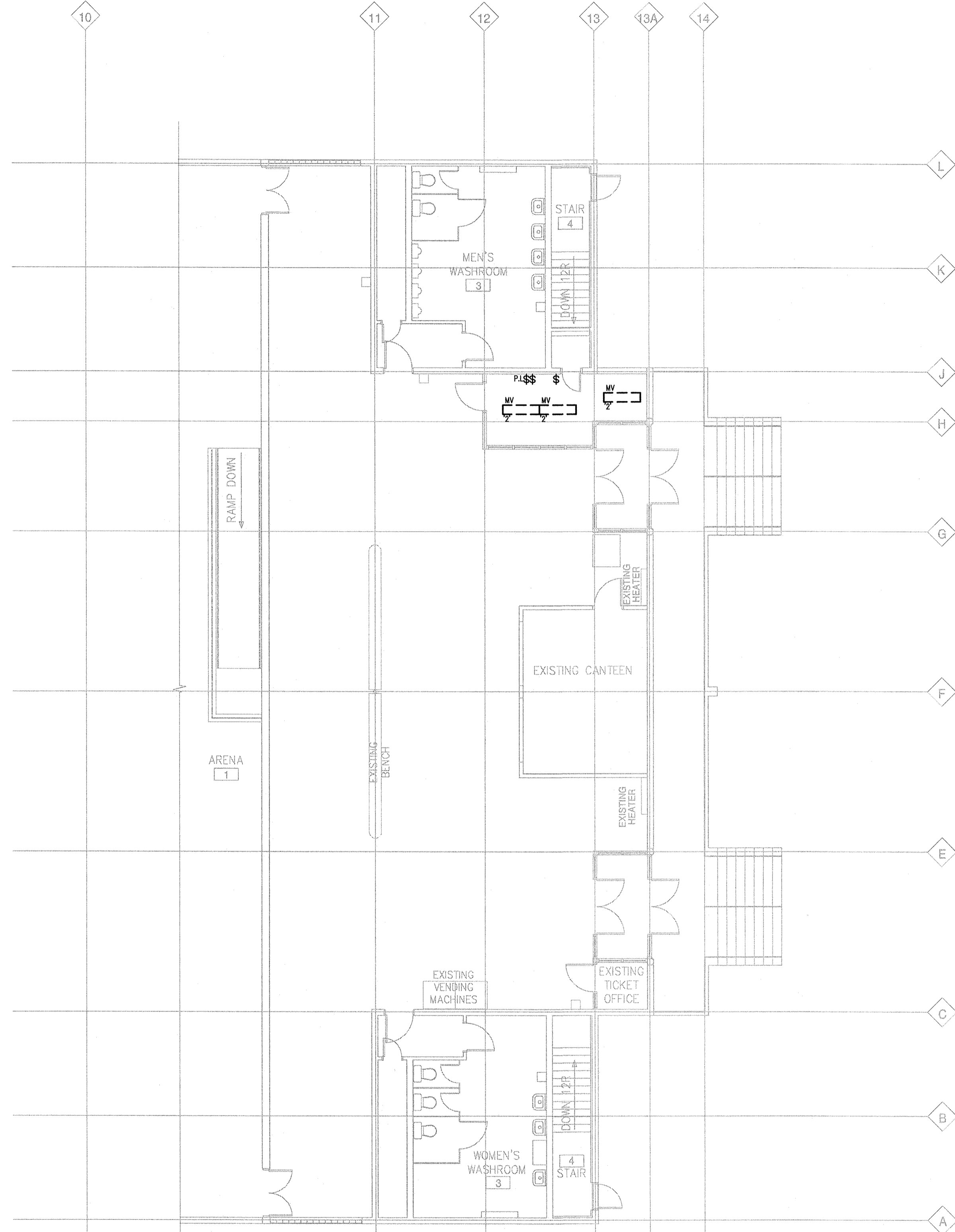


**1 BASEMENT LIGHTING DEMOLITION**  
EDL2.0 SCALE: 1:100



**2 MAIN FLOOR LIGHTING DEMOLITION**  
EDL2.0 SCALE: 1:100

EXISTING LUMINAIRE SCHEDULE	
1	KEYLESS LAMP HOLDER
2	4' 2F32T8 LAMP INDUSTRIAL EGG CRATE, STEM SUSPENDED
3	HPS SURFACE/CEILING PACK
4	HPS SURFACE/WALL PACK

0. ISSUED FOR BID 2012-11-09

revision

This drawing must not be scaled.

The general Contractor must verify all dimensions, datums and levels prior to commencement of work. All errors and omissions must be reported immediately to the Architect.

Variations and modifications to work shown on this drawing shall not be carried out without written permission from the Architect.

This drawing is the exclusive property of the Architect and cannot be reproduced without written permission of the Architect. Reproduction must bear the name of the Architect. Copyright © 2012.

**MCW / AGE**  
Consulting Professional Engineers  
215-1621 Wellington Avenue  
Winnipeg, Manitoba, R3H 0G4  
Phone: (204) 779-7800 Fax: (204) 779-1119  
E-Mail: mcw\_age@mcw.com

8107

**harold funk architect**

Harold Funk Architect  
Architecture and Urban Design  
401-55 Donald Street, Winnipeg, Manitoba R3C 1L8  
T (204) 943-5087 info@funkarchitect.com  
F (204) 943-9231 funkarchitect.com

project  
**ELEVATOR ADDITION AND ACCESSIBILITY UPGRADES OF CENTURY ARENA**  
Winnipeg, Manitoba Bid Opportunity No. 579-2012

sheet title  
**LIGHTING DEMOLITION**

project number: 12-003  
scale: 1:100  
drawn by: MJB / LB  
approved by: KEI  
date: NOV. 9, 2012

drawing number:  
**EDL2.0**

**APEGM**  
Certificate of Authorization  
MCW/AGE Consulting  
Professional Engineers  
No. 589 Expiry: April 30, 2013

