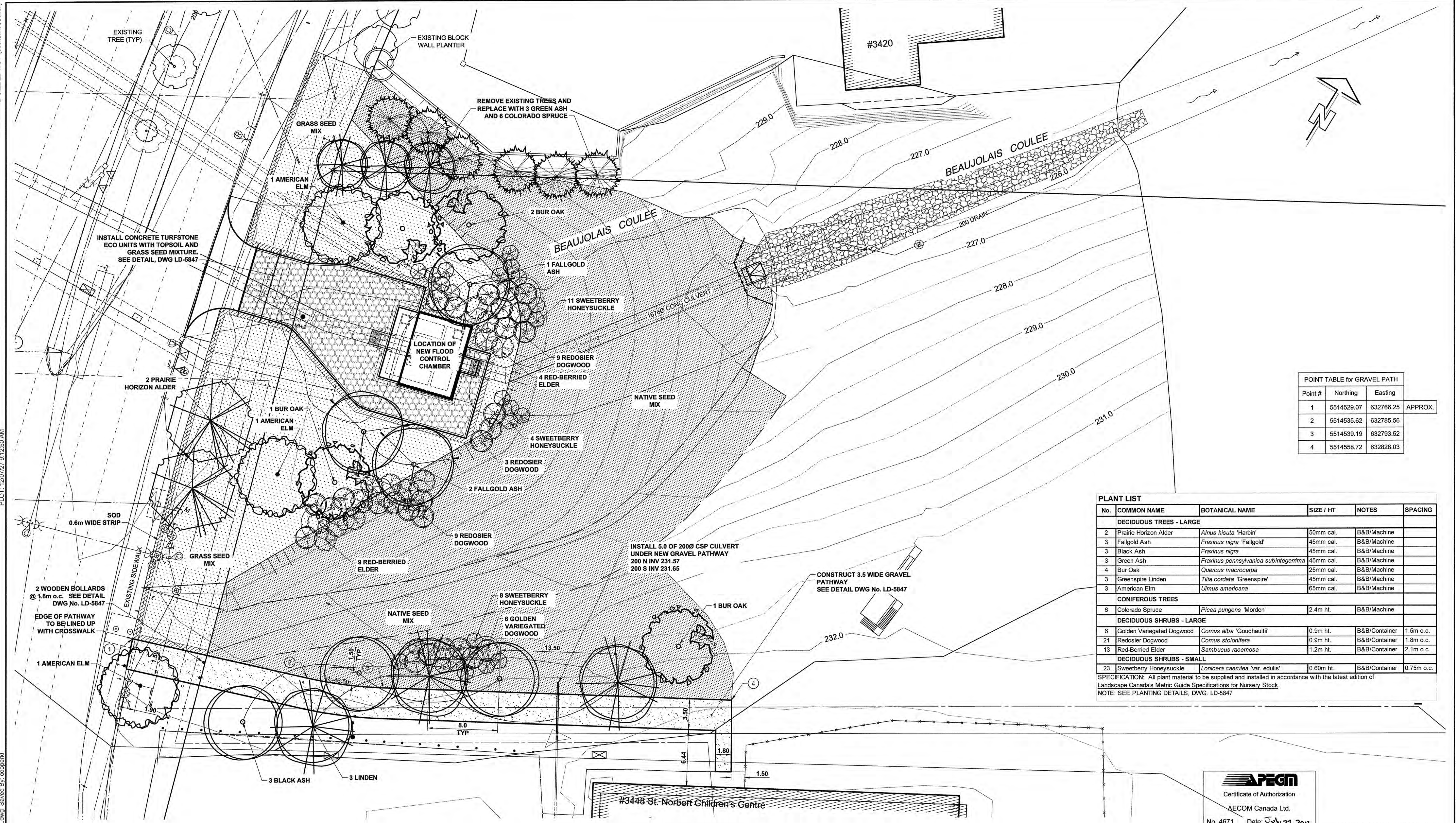


D SIZE 22" x 34" (559mm x 864mm)

PLOT: 12/07/27 9:12:50 AM

AECOM REVIEW DRAFT CHK AECOM FILE NAME: 60221826-02-L-100-R00.dwg Saved By: ccopestki



Point #	Northing	Easting	APPROX.
1	5514529.07	632786.25	
2	5514535.62	632785.56	
3	5514539.19	632793.52	
4	5514558.72	632828.03	

No.	COMMON NAME	BOTANICAL NAME	SIZE / HT	NOTES	SPACING
DECIDUOUS TREES - LARGE					
2	Prairie Horizon Alder	<i>Alnus hisuta</i> 'Harbin'	50mm cal.	B&B/Machine	
3	Fallgold Ash	<i>Fraxinus nigra</i> 'Fallgold'	45mm cal.	B&B/Machine	
3	Black Ash	<i>Fraxinus nigra</i>	45mm cal.	B&B/Machine	
3	Green Ash	<i>Fraxinus pennsylvanica subintegrifolia</i>	45mm cal.	B&B/Machine	
4	Bur Oak	<i>Quercus macrocarpa</i>	25mm cal.	B&B/Machine	
3	Greenspire Linden	<i>Tilia cordata</i> 'Greenspire'	45mm cal.	B&B/Machine	
3	American Elm	<i>Ulmus americana</i>	65mm cal.	B&B/Machine	
CONIFEROUS TREES					
6	Colorado Spruce	<i>Picea pungens</i> 'Morden'	2.4m ht.	B&B/Machine	
DECIDUOUS SHRUBS - LARGE					
6	Golden Variegated Dogwood	<i>Cornus alba</i> 'Gouchaultii'	0.9m ht.	B&B/Container	1.5m o.c.
21	Redosier Dogwood	<i>Cornus stolonifera</i>	0.9m ht.	B&B/Container	1.8m o.c.
13	Red-Berried Elder	<i>Sambucus racemosa</i>	1.2m ht.	B&B/Container	2.1m o.c.
DECIDUOUS SHRUBS - SMALL					
23	Sweetberry Honeysuckle	<i>Lonicera caerulea</i> 'var. edulis'	0.60m ht.	B&B/Container	0.75m o.c.

SPECIFICATION: All plant material to be supplied and installed in accordance with the latest edition of Landscape Canada's Metric Guide Specifications for Nursery Stock.
NOTE: SEE PLANTING DETAILS, DWG. LD-5847



BID OPPORTUNITY NO.587-2012

① POINT NUMBER - REFER TO POINT TABLE FOR NORTHING / EASTINGS

LOCATION APPROVED UNDERGROUND STRUCTURES

SUPR. U/G STRUCTURES DATE COMMITTEE

NOTE: LOCATION OF UNDERGROUND STRUCTURES AS SHOWN ARE BASED ON THE BEST INFORMATION AVAILABLE. BUT NO GUARANTEE IS GIVEN THAT ALL EXISTING UTILITIES ARE SHOWN OR THAT THE GIVEN LOCATIONS ARE EXACT. CONFIRMATION OF EXISTENCE AND EXACT LOCATION OF ALL SERVICES MUST BE OBTAINED FROM THE INDIVIDUAL UTILITIES BEFORE PROCEEDING WITH CONSTRUCTION.

NO.	ISSUED FOR CONSTRUCTION	DATE	BY
0	ISSUED FOR CONSTRUCTION	12/07/27	WJd/KLC
NO.	REVISIONS	YYMMDD	BY

AECOM

DESIGNED BY: LJV
DRAWN BY: LJV
HOR. SCALE: 1:200
VERT. SCALE: -
DATE: 12/07/30

CHECKED BY: J.T.
APPROVED BY: [Signature]
RELEASED FOR CONSTRUCTION
DATE:

PROFESSIONAL'S SEAL

the manitoba association of architects
JOCK VIBERG
member no. 125
July 27/12
LANDSCAPE ARCHITECTS
CONSULTANT DRAWING NO.
60221826-02-L-100-R00.dwg

THE CITY OF WINNIPEG WATER & WASTE DEPARTMENT

CONSTRUCTION OF FLOOD CONTROL STRUCTURE AT PEMBINA HIGHWAY & BEAUJOLAIS COULEE

LANDSCAPING SITE PLAN & PLANTING PLAN

SHEET 7 OF 19
CITY DRAWING NUMBER
LD-5846

REV 0