

FILE NAME: 2011-096/0.dwg/48 DATE: 2012.07.24 PROJECT No: 2011-096 ADDRESS: 1380 PEMBINA HIGHWAY SHEET TITLE: LARGE PLANS-INTERIOR ELEVATIONS, MILLWORK SECTIONS & FINISHES

**NOTES: NOTES, HARDWARE & ACCESSORIES**

STANDARDS OF MATERIAL AND QUALITY OF CONSTRUCTION TO MEET AWWAC STANDARDS.  
 PROVIDE 5 SETS OF SHOP DRAWINGS.  
 ALL DIMENSIONED & NOTED WASHROOM ACCESSORIES & FIXTURES ARE TYPICAL FOR ALL WASHROOM ELEVATIONS UNLESS NOTED OTHERWISE.  
 ALL ACCESSORIES, PLUMBING FIXTURES IN BARRIER FREE WASHROOMS TO BE INSTALLED TO THE LATEST MANITOBA BUILDING CODE STANDARDS FOR BARRIER-FREE ACCESS & THE 2006 CITY OF WINNIPEG ACCESSIBILITY DESIGN STANDARDS.  
 PROVIDE WOOD BLOCKING SUPPORTS FOR ALL NEW BATHROOM ACCESSORIES IN NEW & EXISTING WALLS.  
 PROVIDE WOOD BLOCKING SUPPORTS, METAL ANCHORS FOR ALL NEW LAVATORIES IN EXISTING WALLS. PATCH WALLS AS REQUIRED & PREPARE FOR PAINT.

- BOBRICK ACCESSORIES**
- (3) PAPER TOWEL DISPENSER/WASTE RECEPTACLE B-36903
  - (3) CLASSIC SERIES SOAP DISPENSER B-40
  - (2) MIRROR/SHELF COMBINATION B-166 2436
  - (3) CLASSIC SERIES DOUBLE TOILET TISSUE DISPENSER B-2740
  - (3) MATRIX SERIES SANITARY NAPKIN DISPOSAL B-5270
  - (3) GRAB BARS -SERIES B-6806 x 36" (SIDE WALL HORIZONTAL)
  - (3) GRAB BARS -SERIES B-6806 x 30" (SIDE WALL VERTICAL)
  - (3) GRAB BARS -SERIES B-6806 x 24" (CENTERED ABOVE TANK)
  - (3) CLOTHES HOOK B-881 NOT MORE THAN 47" FROM FIN. FLOOR.
  - (2) KOALA BABY CHANGE TABLES #KB200 COLOUR "GREY"
  - (1) FRAMED MIRROR 24" X 60" B-290 2460

**SIGNAGE -PROVIDE THREE BARRIER-FREE UNISEX SIGNS FOR THE PUBLIC & STAFF WASHROOMS.**  
 SIGNS TO BE 7" X 7" BLACK TACTILE & BRAILLE ON BRONZE FINISH ENGRAVING STOCK. SUPPLIED BY INSIGN ARCHITECTURAL SIGNAGE. REQUIREMENTS ARE TO FOLLOW CODES NOTED ABOVE.

- HARDWARE**
- PULLS: RICHELIEU CONTEMPORARY STAINLESS STEEL #3487105
  - DRAWER SLIDES: ACCURIDE 3017
  - HINGES: BLUM CLIP 170" SELF CLOSING NICKEL FINISH
  - RECESSED SHELF SUPPORTS: K&V 255 & 256 -CHROME
  - CLOSET ROD: K&V #764 FLANGE & #770-1, 1 1/2" TUBING (CHROME)
- MELAMINE**
- ALL INTERIOR CABINETS & COAT SHELF TO BE GREY MELAMINE.

- PLASTIC LAMINATE**
- PL #1**  
ARBORITE P. 345 DI "NUKSHUK TAUPE" (COUNTERTOPS, SUPPORT GABLES, STAFF LUNCHROOM & WASHROOM)
  - PL #1**  
WILSONART D327-60 "PEPPERDUST" (EXTERIOR EXPOSED CABINETS, STAFF LUNCHROOM)

**WALL PROTECTION- SEE PLAN 3 ON THIS DWG.**

1 -REVISE NOTE ON LARGE PLAN 3 STAFF AREA 112 TO READ "DWG. A7" NOT "DWG. A10". MKK 2012.10.02  
 -DELETE TRANSFER GRILLE & NOTES ON LARGE PLAN PUBLIC WASHROOMS & ELEVATION "A".

No.	REVISION/DESCRIPTION	BY	DATE

DRAWN	CHECKED	DESIGNED	APPROVED
MKK			
DATE: 2012.07.24	USER APPROVAL		

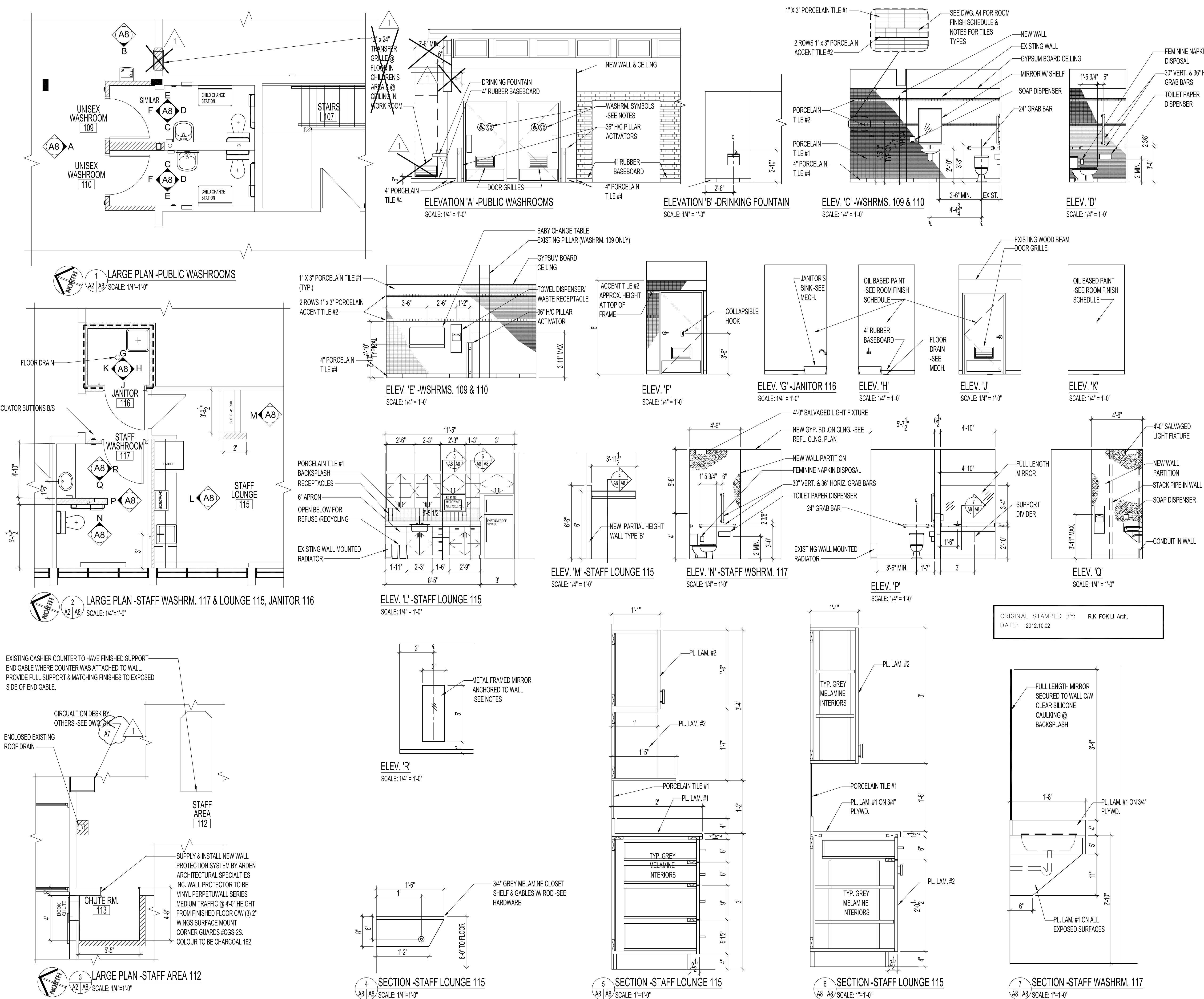
**THE CITY OF WINNIPEG**  
 PLANNING, PROPERTY AND DEVELOPMENT DEPARTMENT  
 MUNICIPAL ACCOMMODATIONS DIVISION  
 3-65 GARRY STREET, R3C 4K4

**PROJECT**  
 FORT GARRY LIBRARY  
 INTERIOR & EXTERIOR REFURBISHING DESIGN  
 1380 PEMBINA HIGHWAY

**SHEET TITLE**  
 LARGE PLANS  
 INTERIOR ELEVATIONS  
 MILLWORK SECTIONS & FINISHES

SCALE	PROJECT No:	SHEET No:
AS SHOWN	2011-096	A8R1

DRAWING SHEET SIZE: A1 (841mm x 594mm) PLOT 1:1



ORIGINAL STAMPED BY: R.K. FOK LI Arch.  
 DATE: 2012.10.02