

FILE NAME:

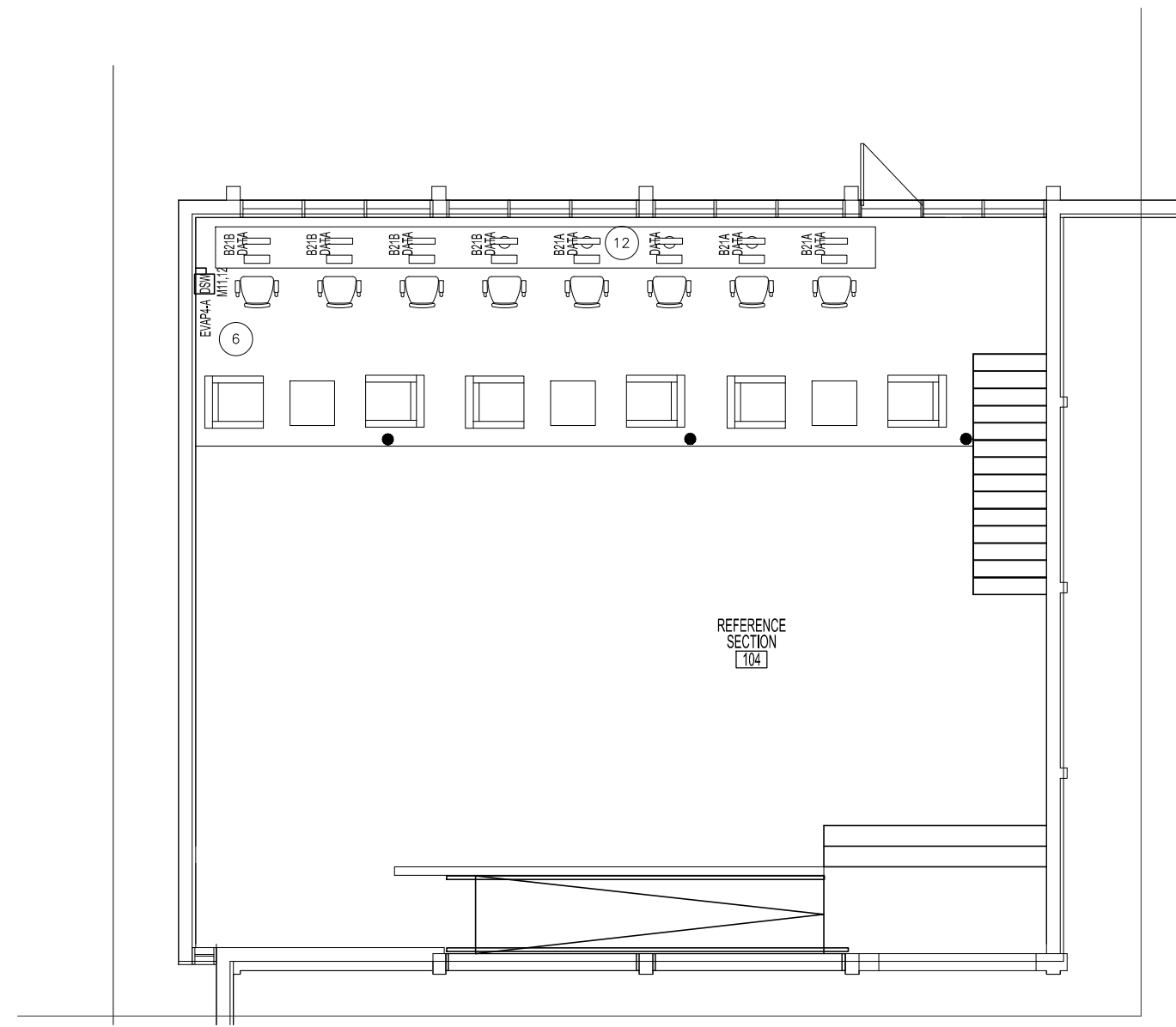
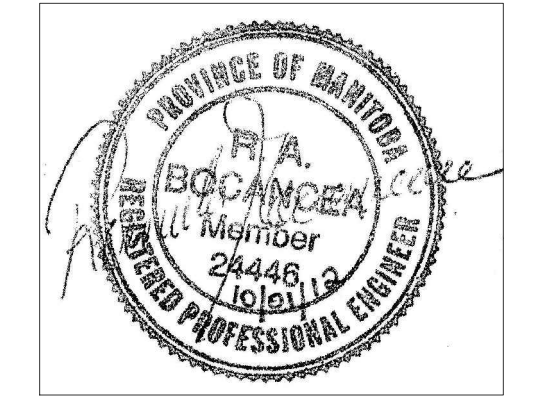
DATE: 2012.09.24

SHEET TITLE: MAIN & MEZZANINE POWER AND SYSTEMS - DEMOLITION

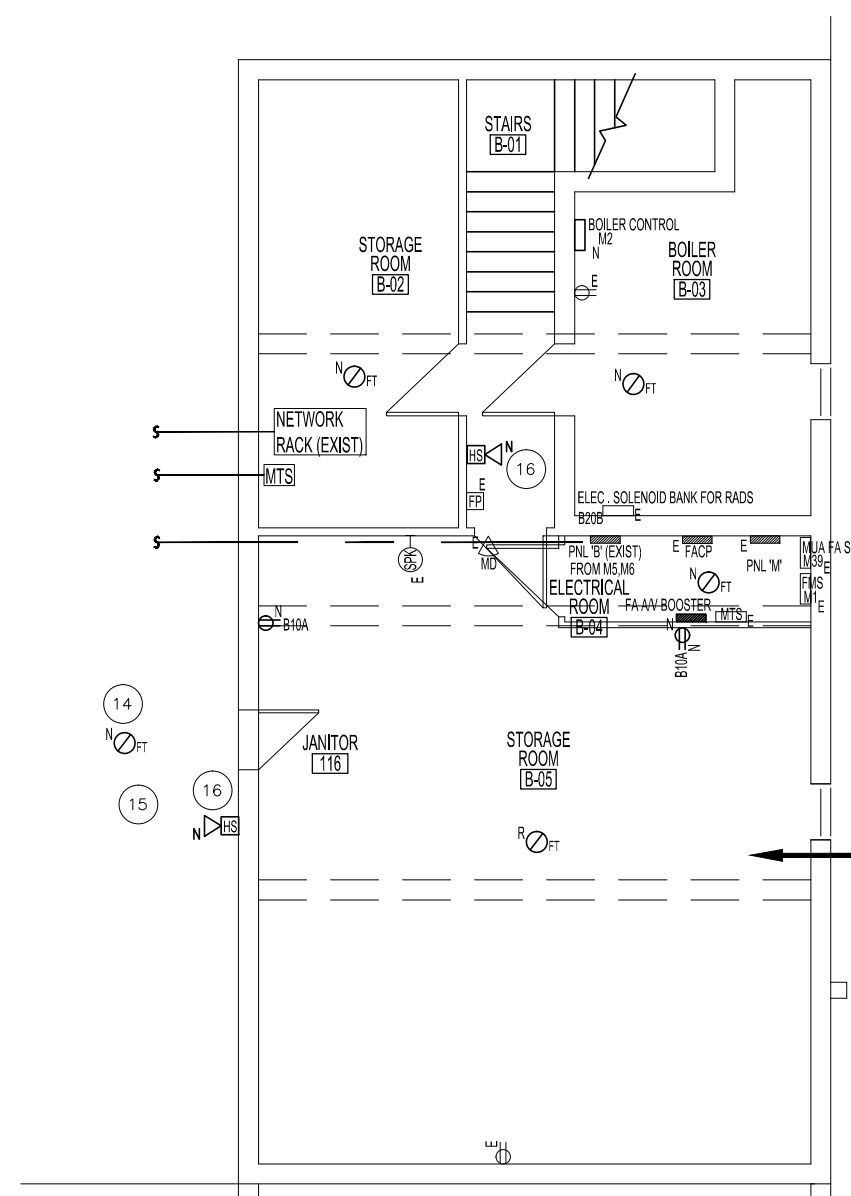
PROJECT No: 2011-006

ADDRESS: 1380 PEMBINA HIGHWAY

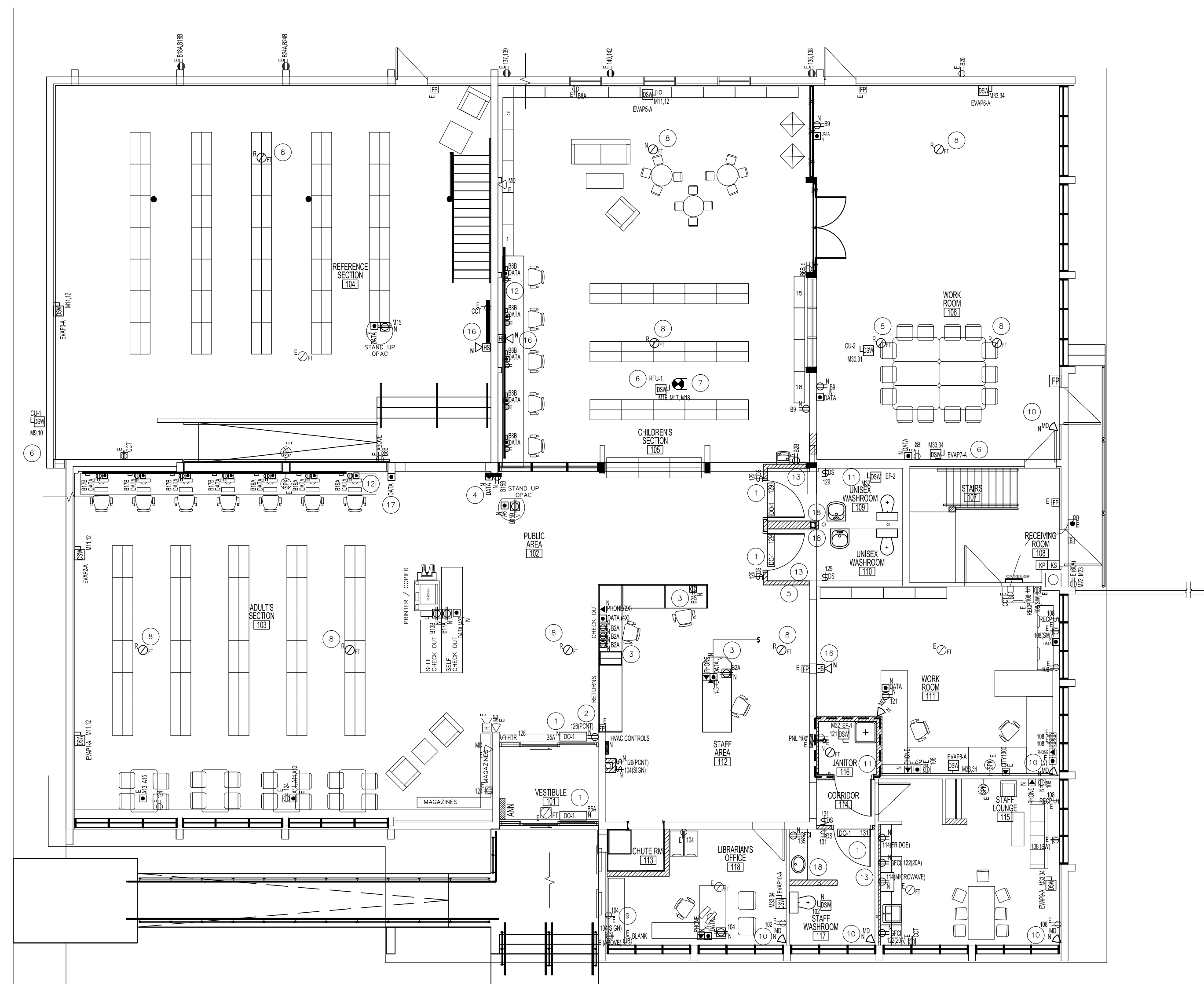
NOTES:



MEZZANINE FLOOR PLAN - RENOVATION - POWER, DATA AND COMMUNICATION
SCALE: 1/8"=1'-0"



BASEMENT FLOOR PLAN - RENOVATION
POWER, DATA AND COMMUNICATION
SCALE: 1/8"=1'-0"



MAIN FLOOR PLAN - RENOVATION - POWER, DATA AND COMMUNICATION
SCALE: 1/8"=1'-0"
NOTE: ROOF DECK MOUNTED JUNCTION BOXES & LUMINAIRE ARE SHOWN ON LIGHTING RENOVATION DRAWING

KEY NOTES:	
1	CONNECT NEW AUTO DOOR POWER AND CONTROLS. CONCEAL CONDUIT AND CABLE WHERE POSSIBLE. REFER TO DWG A2 AND CONNECT AS PER HARDWARE GROUP#.
2	CONFIRM ELEVATION FOR POWER CONNECTION FOR PEOPLE COUNTER (BY OTHERS). PROVIDE DIRECT CONNECT OR RECEPTACLE TO SUIT UNIT. COORDINATE WITH OWNER.
3	CONNECT NEW POWER, DATA AND VOICE OUTLETS AT NEW MILLWORK. EXPOSED WIRING TO BE INSTALLED IN LEGRAND SERIES 2400 WITH ONE GANG DEVICE BOX C24444DFW. PROVIDE ALL FITTINGS. COLOUR TO BE FOG WHITE.
4	INSTALL AT 84" AFF.
5	RE-INSTALL AED CABINET AND WIRING TO THIS LOCATION.
6	CONNECT ALL NEW MECHANICAL EQUIPMENT AND PROVIDE NEW DISCONNECT SWITCH, W/P WHERE REQUIRED.(TYPICAL)
7	SUPPLY AND INSTALL A DUCT SMOKE DETECTOR FOR NEW RTU-1. UNIT TO BE MIRCOCOM, SYSTEM SENSOR OR APPROVED EQUAL. CONNECT NEW RTU-1 TO EXISTING FIRE ALARM SHUTDOWN CONTACT.
8	RELOCATE EXISTING HEAT DETECTOR AND WIRING. UNIT IS TO BE RELOCATED AWAY FROM BEAM 200mm. TYPICAL FOR ALL THAT ARE INSTALLED WITHIN 200mm OF THE BEAM.
9	INSTALL SWITCHED DUPLEX RECEPTACLE FOR SIGN. COORDINATE RECEPTACLE ELEVATION ON SITE PRIOR TO ROUGH IN.
10	INSTALL SECURITY DEVICES AT LOCATIONS INDICATED. SUPPLY ADDITIONAL UNITS TO MATCH EXISTING.
11	CONNECT NEW MOTORIZED DAMPER TO EXHAUST FAN CIRCUIT.
12	SUPPLY AND INSTALL LEGRAND 2400D SERIES RACEWAY C/W ALL FITTINGS AND 2 GANG DEVICE BOXES SPACED AT 4 FEET. PROVIDE 1 RECEPTACLE AND 2 RJ45 JACKS C/W COVERPLATES. COLOUR TO BE FOG WHITE. LOCATE CHILDREN AREA AT 51" AFF. OTHER LOCATIONS TO BE 38" AFF. CONCEAL ALL FEED WIRING. PROVIDE A STROBE ONLY UNIT IN THE WASHROOM
13	
14	ALLOW 6 HEAT DETECTORS INSTALLED IN THE CRAWLSPACE. CONFIRM SPACING AND LOCATION ON SITE.
15	ALLOW FOR ALL WORK NECESSARY FOR DEMOLITION OF ELECTRICAL IN CONFINED SPACE.
16	PROVIDE A NEW HORN/STROBE UNIT.(TYPICAL)
17	RELOCATE THE WIRELESS ACCESS UNIT FROM ABOVE THE BOOKSHELVES TO THIS LOCATION AT 90" AFF.
18	WIRE AND CONNECT AUTOFAUCET TO CCT 124.

2	ISSUED FOR TENDER	KO	10/01/12
1	ISSUED FOR TENDER	KO	10/01/12

No.	REVISION/DESCRIPTION	BY	DATE

SEAL

DRAWN	DTAKO	CHECKED	KO	DESIGNED	DTAKO	APPROVED	RB
DATE	2012.07.24	USER	APPROVAL				

THE CITY OF WINNIPEG
PLANNING, PROPERTY AND
DEVELOPMENT DEPARTMENT
MUNICIPAL ACCOMMODATIONS DIVISION
3-65 GARRY STREET, R3C 4K4

PROJECT
FORT GARRY LIBRARY
INTERIOR & EXTERIOR REFURBISHING
DESIGN
1380 PEMBINA HIGHWAY

SHEET TITLE
MAIN, MEZZANINE & BSMT POWER AND
SYSTEMS RENOVATION PLAN
ELECTRICAL

SCALE	PROJECT No:	SHEET No:	E2
AS SHOWN	2011-096		

DRAWING SHEET SIZE: A1 (841mm x 594mm) PLOT 1:1