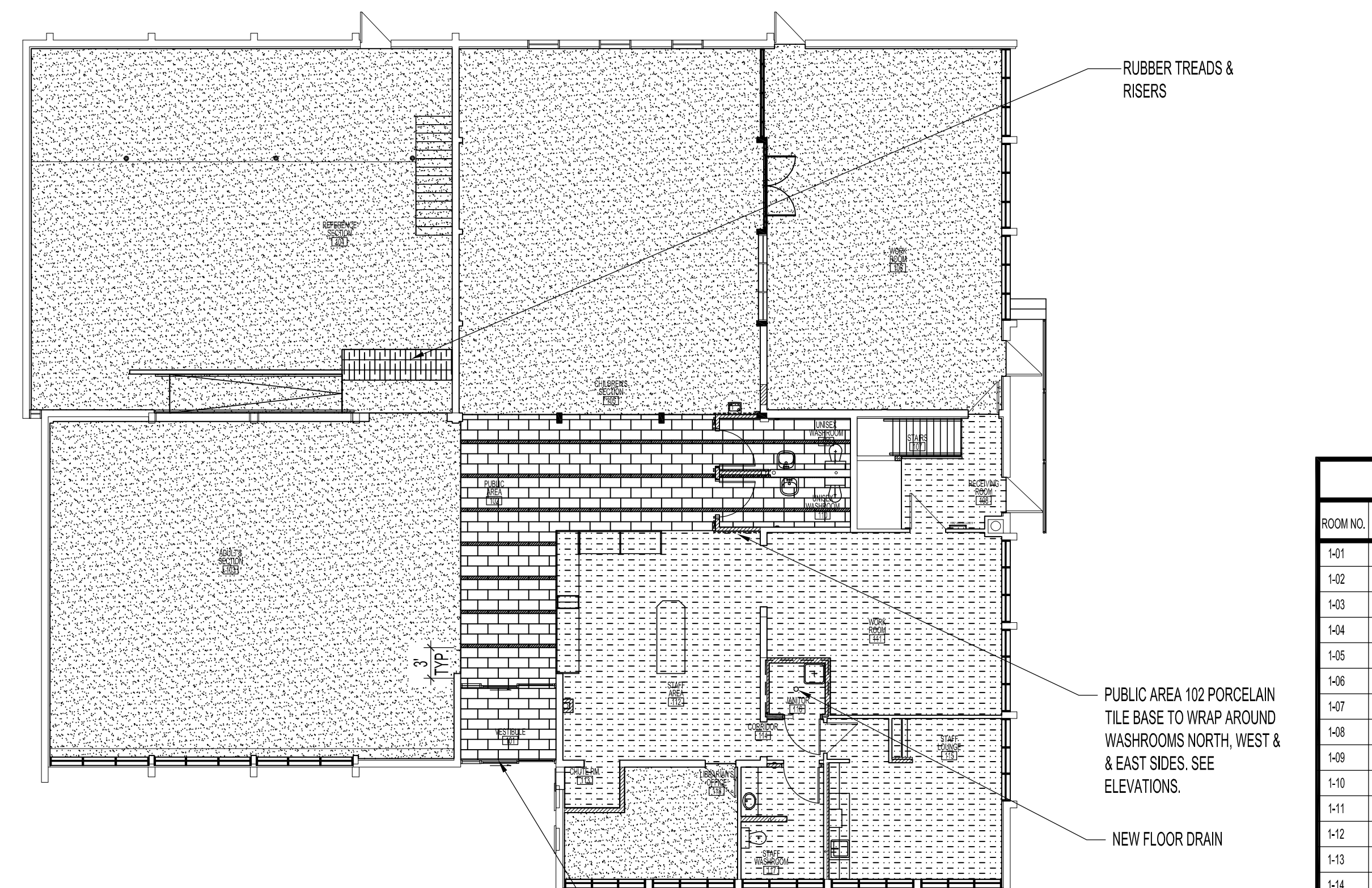
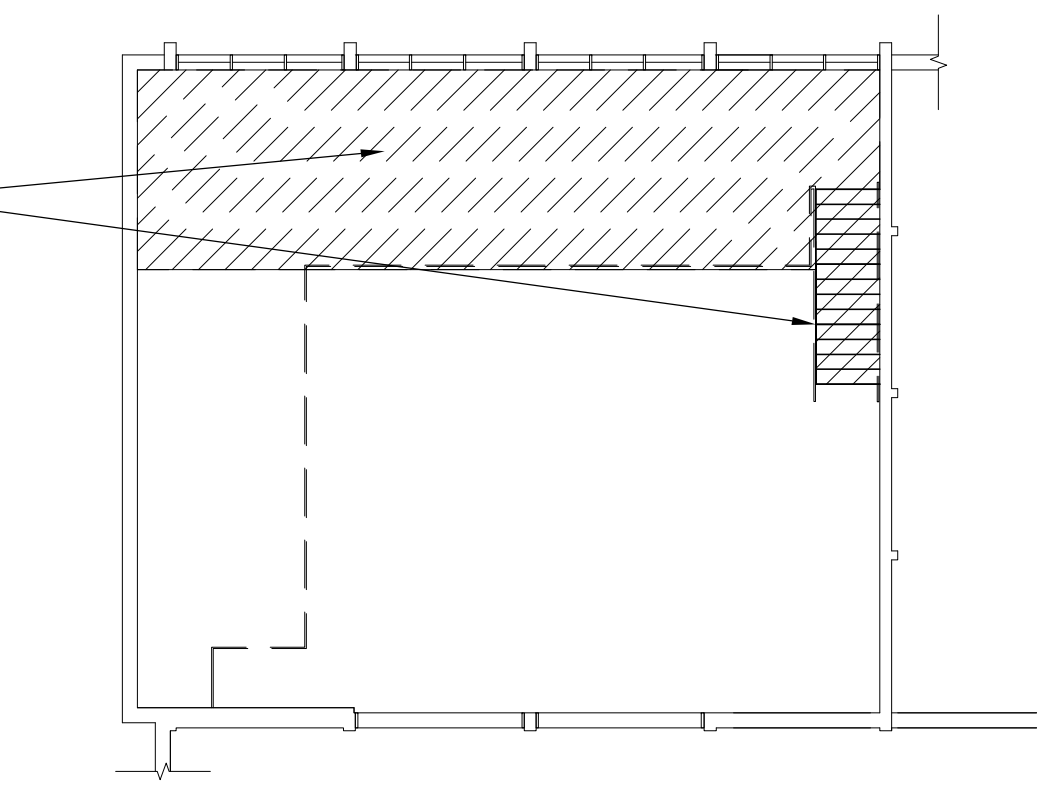


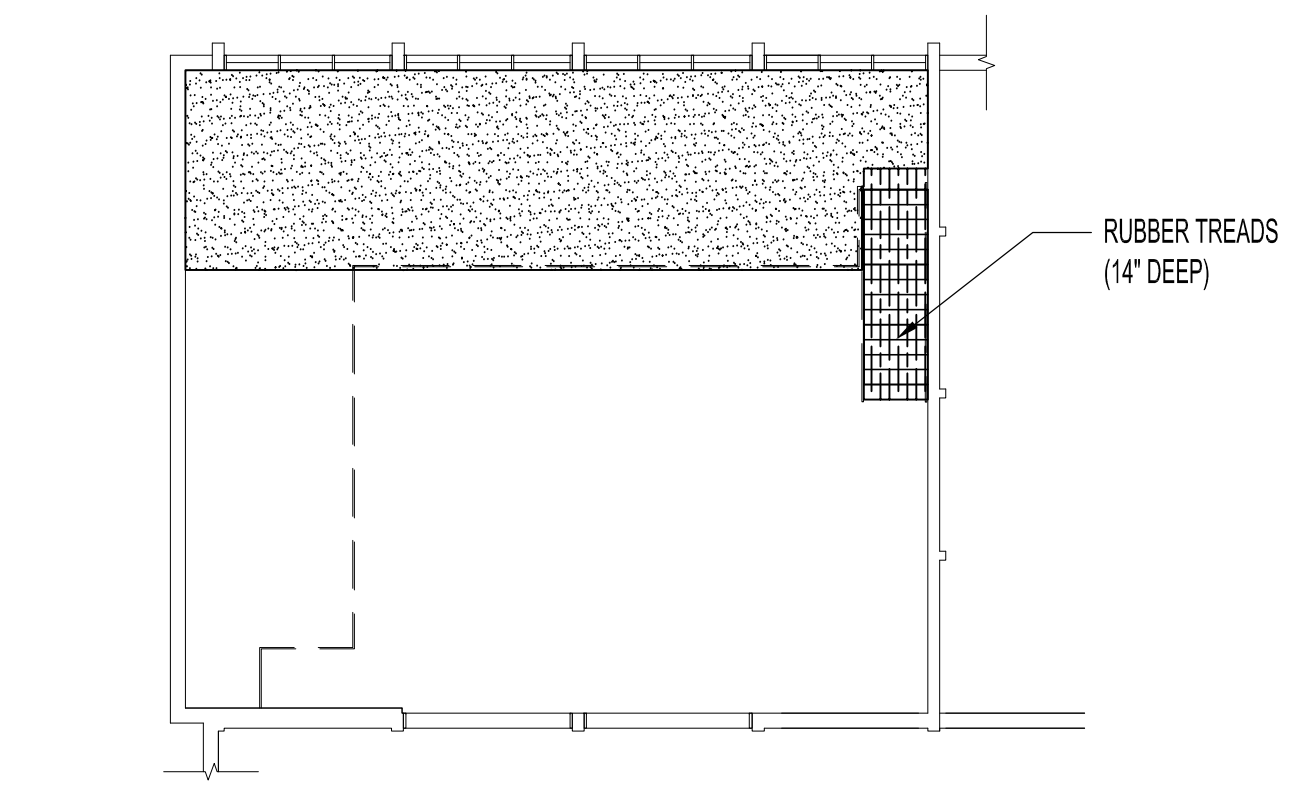
1 MAIN FLOOR PLAN - FLOOR FINISH DEMOLITION SCALE: 1/8"=1'-0"



3 MAIN FLOOR PLAN - FLOOR FINISH RENOVATION SCALE: 1/8"=1'-0"



2 MEZZANINE FLOOR PLAN - FLOOR FINISH DEMOLITION SCALE: 1/8"=1'-0"



4 MEZZANINE FLOOR PLAN - FLOOR FINISH RENOVATION SCALE: 1/8"=1'-0"

DEMOLITION PLAN		RENOVATION PLAN		PORCELAIN TILE	
NOTE: ALL REMOVED FLOORING MUST BE PATCHED, LEVELLED, PREPPED & PREPARED TO EXCEPT ALL TYPES OF NEW FLOORING		NOTE: SUPPLY & INSTALL NEW TRANSITION STRIPS BETWEEN NEW & EXISTING CARPET, PORCELAIN TILE & VINYL SHEET FLOORING & EXISTING FLOORING		VESTIBULE 101, PUBLIC AREA 102, UNISEX WASHROOMS 109 & 110	
[Pattern]	EXISTING VINYL SHEET FLOORING TO BE REMOVED	[Pattern]	NEW 24" x 24" CARPET TILES TO BE BOLVU TEMPO TILE, TMOPI BALLROOM DANCE, AVALAR RE NYLON W/ QUARTER TURN INSTALLATION, FREE LAY, NO GLUE.	[Pattern]	PORCELAIN TILE #1 OLYMPIA TILE GI SERIES TAUPE MATTE FINISH CHIP SIZE 1" x 3", (SHEET SIZE 11.25' x 11.5'), CODE # TH.GI.TPE.0103.MT-SEE ELEVATIONS
[Pattern]	EXISTING ROLLED CARPETING TO BE REMOVED	[Pattern]	NEW VINYL SHEET FLOORING TO BE JOHNSONITE ARIA 'FERRIS WHEEL' 656	[Pattern]	PORCELAIN ACCENT TILE #2 OLYMPIA TILE GI SERIES BLACK MATTE FINISH CHIP SIZE 1" x 3", CODE # TH.GI.BLK.0103.MT-SEE ELEVATIONS
[Pattern]	EXISTING 12 x 12 VCT TILE TO BE REMOVED	[Pattern]	12" x 24" PORCELAIN TILE #3 4" x 24" PORCELAIN TILE #4 ALSO 4" BASE #4 TO RUN AS NOTED ON PLAN, ROOM FINISH SCHEDULE & ELEVATIONS	[Pattern]	PORCELAIN TILE #3 OLYMPIA TILE ROSEDALE SERIES CHARCOAL SIZE 12" x 24", CODE # OV. RR. CHA. 1224-SEE LEGEND & PLAN
[Pattern]	"3" x 9" ASBESTOS TILE" FLOOR REMOVAL TO FOLLOW HAZARDOUS MATERIAL STANDARD PROCEDURES FOR ASBESTOS TILE REMOVAL.	[Pattern]	MEZZANINE STAIRS & MEZZANINE ENTRANCE STAIRS JOHNSONITE RUBBER TREADS & RISERS W/ INTEGRATED RISER FOR VISUALLY IMPAIRED STANDARD SPECKLED COLOURWAYS 725 METEOR 63 BURNT UMBER, HAMMERED TEXTURED TREADS & RISERS CW CONTRAST COLOUR STRIP -49 BEIGE NOTE: NO RISERS REQUIRED FOR MEZZANINE STAIRS	[Pattern]	PORCELAIN ACCENT TILE #4 OLYMPIA TILE ROSEDALE SERIES BLACK SIZE 4" x 24", CODE # OV. RR. CHA. 0424.OS-SEE LEGEND & PLAN
[Pattern]	EXISTING 'ASBESTOS' TILE TO BE REMOVED. SEE NOTES	[Pattern]	RUBBER BASEBOARD: JOHNSONITE 4" HEIGHT COLOUR 63 BURNT UMBER		

ROOM FINISH SCHEDULE										
ROOM NO.	ROOM NAME	FLOOR	BASEBOARD	NORTH WALL	SOUTH WALL	EAST WALL	WEST WALL	CEILING	CEILING HEIGHT	NOTES
1-01	PUBLIC VESTIBULE	P.C.T. #3	6" P.C.T. #3	EXIST.				EXIST.	9'-6"	PREPARE & PAINT EXISTING RAD. COVER, EXPOSED PIPES
1-02	PUBLIC AREA	P.C.T. #3 & #4	4" P.C.T. #4	PT.	PT.	PT.	PT.		12'-6"	SEE PLAN FOR NOTES FOR 4" P.C.T. BASE LOCATIONS
1-03	ADULT SECTION	CP. T.	4" R.B.B.	PT.	PT.	PT.	PT.		12'-6"	
1-04	REFERENCE SECTION	CP. T.	4" R.B.B.	PT.	PT.	PT.	PT.	EXIST. GYP. BD.	7'-6" & 10'-0"	SEE ELEVATIONS FOR ACCENT PANELS
1-05	CHILDRENS SECTION	CP. T.	4" R.B.B. & 4" P.C.T. #4	PT.	PT.	PT.	PT.	EXIST.	9'-6"	SEE PLAN FOR NOTES FOR 4" P.C.T. BASE LOCATIONS
1-06	WORK ROOM	CP. T.	4" R.B.B.	PT.	PT.	PT.	PT.			
1-07	STAIRS	EXIST.	EXIST.	PT.	PT.	PT.	PT.			
1-08	RECEIVING ROOM	V.S.F.	4" R.B.B.	PT.	PT.	PT.	PT.			PREPARE & PAINT EXISTING RAD. COVER, EXPOSED PIPES
1-09	UNISEX WASHROOM	P.C.T. #3 & #4	4" P.C.T. #4	P.C.T. #1 & #2	P.C.T. #1 & #2	P.C.T. #1 & #2	P.C.T. #1 & #2	GYP. BD.	8'-0"	
1-10	UNISEX WASHROOM	P.C.T. #3 & #4	4" P.C.T. #4	P.C.T. #1 & #2	P.C.T. #1 & #2	P.C.T. #1 & #2	P.C.T. #1 & #2	GYP. BD.	8'-0"	SEE PLAN FOR NOTES FOR 4" P.C.T. BASE LOCATIONS
1-11	WORK ROOM	V.S.F.	4" R.B.B.	PRT. PT.	PT.	PT.	PT.	EXIST.	9'-6"	PREPARE & PAINT EXISTING RAD. COVER, EXPOSED PIPES
1-12	STAFF AREA	V.S.F.	4" R.B.B. & 4" P.C.T. #4	PT.	PRT. PT.	PT.	PT.		12'-6"	SEE PLAN FOR NOTES FOR 4" P.C.T. BASE LOCATIONS
1-13	CHUTE ROOM	V.S.F.	4" R.B.B.	PT.	PT.		PT.		9'-6"	INSTALL PAINT GRADE WOOD CEILING TRIM ON NEW WALL ON OFFICE SIDE TO MATCH EXISTING ON SITE
1-14	CORRIDOR	V.S.F.	4" R.B.B.	PT.	PT.	PT.	PT.			INSTALL PAINT GRADE WOOD CEILING TRIM TO MATCH EXISTING ON SITE ON CORRIDOR SIDE ONLY
1-15	STAFF LOUNGE	V.S.F.	4" R.B.B.	PT. & P.C.T. #1	PT.	PT.	PT.			PREPARE & PAINT EXISTING RAD. COVER, EXPOSED PIPES, PORCELAIN TILE #1 ON BACKSPLASH
1-16	JANITOR'S ROOM	V.S.F.	4" R.B.B.	O.B.A.P.T.	O.B.A.P.T.	O.B.A.P.T.	O.B.A.P.T.			INSTALL PAINT GRADE WOOD CEILING TRIM ON NEW WALL ON WORK ROOM SIDE ONLY. SEE NOTES FOR SPECIFIC PAINT FINISH FOR THIS ROOM ONLY
1-17	STAFF WASHROOM	V.S.F.	4" R.B.B.	PT.	PT.	PT.	PT.	GYP. BD.		PREPARE & PAINT EXISTING RAD. COVER, EXPOSED PIPES
1-18	LIBRARIANS OFFICE	CP. T.	4" R.B.B.	PT.	PT.	PT.	PT.	EXIST.		PREPARE & PAINT EXISTING RAD. COVER, EXPOSED PIPES
M-01	MEZZANINE	CP. T./R.T.	4" R.B.B.	PT.	PT.	PT.	PT.	EXIST.	9'-6"	STAIRS HAS RUBBER TREADS-SEE PLAN & LEGEND

ABBREVIATIONS
 CP. T. - 2" CARPET TILE P.C.T. - PORCELAIN TILE V.S.F. - VINYL SHEET FLOORING R.T. - RUBBER TREADS 4" P.C.T. - 4" PORCELAIN TILE
 PT. - PAINT PRT. PT. - PARTIAL PAINT O.B.A.P.T. - OIL BASED ALKYD PAINT GYP. BD. - GYPSUM BOARD R.B.B. - 4" RUBBER BASEBOARD

NOTES:

PAINT FINISHES (PT.)
 ALL AREAS NOTED ON ROOM FINISH SCHEDULE TO BE PAINTED W/ TWO COATS BENJAMIN MOORE 'WHITE DOVE' OC-17 LATEX EGGSHELL FINISH UNLESS NOTED OTHERWISE.

JANITOR'S ROOM 116 (O.B.A.P.T.) & ALL METAL RADIATOR COVERS
 PAINT FINISH TO BE OIL BASED ALKYD, SEMI-GLOSS PAINT FINISH ON ALL INTERIOR WALLS, DOOR, & FRAME. ALL RADIATOR COVERS TO SPRAYED, NO BRUSHES.

PAINTING SPECIFICATIONS
 1. PERFORM PREPARATION & OPERATIONS FOR INTERIOR PAINTING IN ACCORDANCE WITH MPI ARCHITECTURAL PAINTING SPECIFICATIONS MANUAL EXCEPT WHERE SPECIFIED OTHERWISE.
 2. APPLY PAINT MATERIALS IN ACCORDANCE WITH PAINT MANUFACTURER'S WRITTEN APPLICATION INSTRUCTIONS.

RESILIENT TILE FLOORING EXECUTION
 1. MANUFACTURER'S INSTRUCTIONS - INSTALLATION IN STRICT COMPLIANCE WITH MANUFACTURER'S WRITTEN RECOMMENDATIONS & SPECIFICATIONS, INCLUDING PRODUCT TECHNICAL BULLETINS, HANDLING, STORAGE & INSTALLATION INSTRUCTIONS, & DATA SHEETS.

PORCELAIN TILE
 1. ADHESIVES, MORTARS & GROUTS TO BE COMPATIBLE WITH SUBSTRATE & TILE & IN ACCORDANCE WITH ANSI A108, A118, A136.
 2. POLYMER MODIFIED CEMENT GROUT: TO ANSI A118.7. COLOUR TO BE SELECTED AT A LATER DATE.

GROUT
 2. POLYMER MODIFIED CEMENT GROUT: TO ANSI A118.7. COLOUR TO BE SELECTED AT A LATER DATE.

WORKMANSHIP
 3. DO TILE WORK IN ACCORDANCE WITH TTMAC TILE INSTALLATION MANUAL 2006/2007, "PORCELAIN TILE", EXCEPT WHERE SPECIFIED OTHERWISE.
 4. COMPLY WITH ANSI STANDARD TILE INSTALLATION MATERIAL & CURRENT TILE COUNCIL OF AMERICA HANDBOOK FOR PRODUCTS & MATERIALS INDICATED FOR SETTING & GROUTING.

TILE CLEAN-UP
 5. OLYMPIC TILE SHOULD BE CHEMICALLY CLEANED USING FILA BRAND DETERGENT ACID DESCALING FLOOR CLEANER DURING FINAL CLEAN-UP.

MODULAR CARPET
 1. APPLY RELEASE TYPE ADHESIVE & INSTALL MODULAR CARPET IN ACCORDANCE WITH MANUFACTURER'S WRITTEN INSTRUCTIONS.
 2. LAY MODULAR CARPET WITH BUTT SEAMS.
 3. ROLL MODULAR CARPET WITH APPROPRIATE ROLLER FOR COMPLETE CONTACT OF CARPET WITH MILL-APPLIED ADHESIVE TO EXISTING FLOOR.

ORIGINAL STAMPED BY: R.K. FOK LI Arch.
 DATE: 2012.08.24

No.	REVISION/DESCRIPTION	BY	DATE
SEAL			

DRAWN	CHKD	DESIGNED	APPROVED
DATE: 2012.07.24	USER APPROVAL		

THE CITY OF WINNIPEG
 PLANNING, PROPERTY AND DEVELOPMENT DEPARTMENT
 MUNICIPAL ACCOMMODATIONS DIVISION
 3-65 GARRY STREET, R3C 4K4

PROJECT
 FORT GARRY LIBRARY
 INTERIOR & EXTERIOR REFURBISHING DESIGN
 1360 PEMBINA HIGHWAY

SHEET TITLE
 MAIN & MEZZANINE FLOOR PLAN
 FLOOR FINISH DEMOLITION & RENOVATION
 ROOM FINISH SCHEDULE

SCALE	PROJECT No:	SHEET No:
AS SHOWN	2011-096	A4