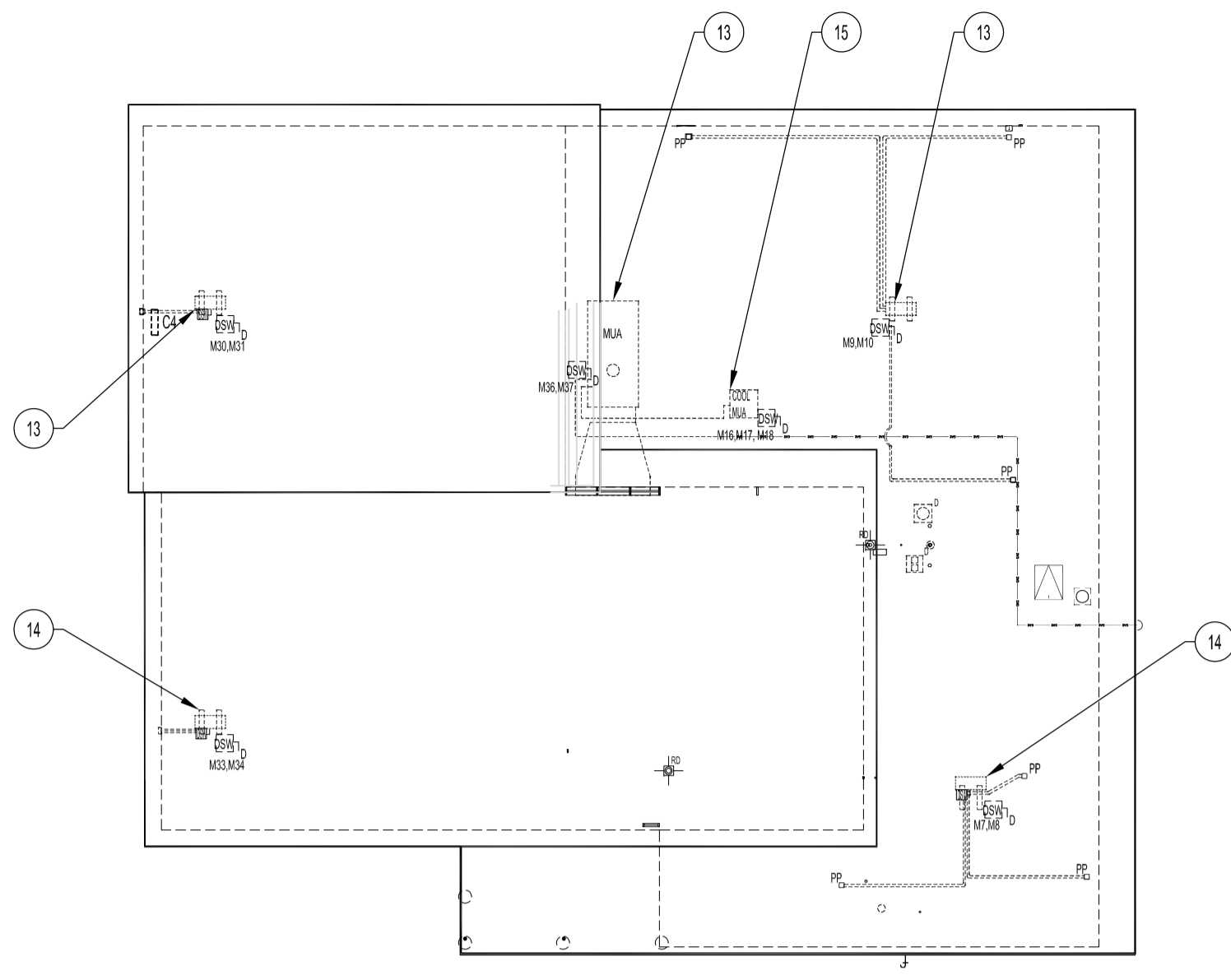
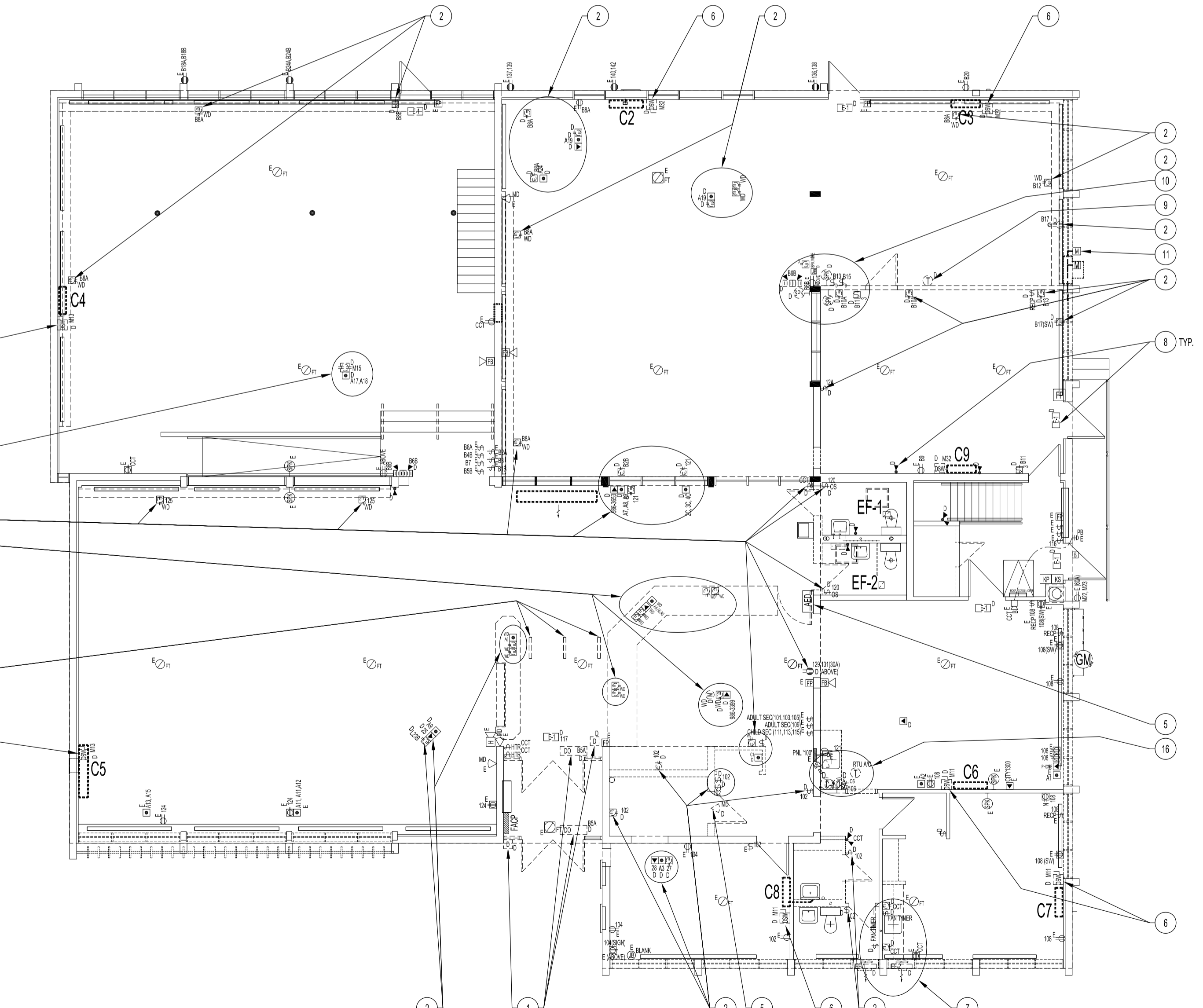


**MEZZANINE FLOOR PLAN - DEMOLITION - POWER, DATA AND COMMUNICATION**  
SCALE: 1/8"=1'-0"



**ROOF PLAN - DEMOLITION - POWER, DATA AND COMMUNICATION**  
SCALE: 1/8"=1'-0"



**MAIN FLOOR PLAN - DEMOLITION - POWER, DATA AND COMMUNICATION**  
SCALE: 1/8"=1'-0"  
NOTE: LUMINAIRES ARE SHOWN ON ELECTRICAL LIGHTING DRAWING

ABBREVIATIONS	
	DESCRIPTION
A	AMPERE, AMPACITY
A/C	AIR CONDITIONER
AFF	ABOVE FINISH FLOOR
CCT	CIRCUIT, CCT: C= PANEL ; CT= CIRCUIT
D	DEMOLITION
DS	DOOR SWITCH
DSW	DISCONNECT SWITCH
DWG	DRAWING
E, EXIST	EXISTING
FMS	FACILITY MANAGEMENT SYSTEM
GFCI	GROUND FAULT CIRCUIT INTERRUPTER
GM	GAS METER
HTR	HEATER
HVAC	HEATING, VENTILATING AND AIR CONDITIONING
HZ	HERTZ
JB	JUNCTION BOX
M	METER
MD	MOTION DETECTOR
MUA	MAKE-UP AIR UNIT
N	NEW
NTS	NOT TO SCALE
OS	OCCUPANCY SENSOR
PB	PUSH BUTTON
PCNT	PEOPLE COUNTER
PNL	PANEL
RECP	RECEPTACLE
SW	SWITCH
TYP	TYPICAL
V	VOLT
VRF	VARIABLE REFRIGERANT FLOW
W	WATT
WD	WOOD FURNISHING (MOUNTED ON)
WP	WEATHERPROOF

ELECTRICAL LEGEND (SUPPLY & INSTALL, UNLESS OTHERWISE INDICATED)	
TYPE	DESCRIPTION
⊖	DUPLEX RECEPTACLE
⊖ <sup>18"</sup>	HEIGHT IN INCHES ABOVE FINISH FLOOR TO CENTERLINE OF DEVICE
⊖ <sup>12"</sup>	SPLIT DUPLEX RECEPTACLE
⊖ <sup>18"</sup>	FLOOR PEDESTAL DOUBLE DUPLEX RECEPTACLE
⊖ <sup>18"</sup>	DUPLEX RECEPTACLE, WD = MOUNTED ON WOOD FURNISHING
⊖ <sup>18"</sup>	FLOOR PEDESTAL DUPLEX RECEPTACLE
⊖	LIGHT SWITCH, SINGLE
⊖ <sup>18"</sup>	OCCUPANCY SENSOR SWITCH WITH AUTO-ON & AUTO-OFF, LUTRON MAESTRO MODEL MS-OPS5AM, WHITE
⊖ <sup>18"</sup>	PUSH PLATE (36") SWITCH FOR AUTOMATIC DOOR
⊖ <sup>18"</sup>	PHOTOELECTRIC EYE FOR EXISTING OUTDOOR LUMINAIRES (EXIST)
⊖ <sup>18"</sup>	CEILING MOUNT OCCUPANCY SENSOR, 120 V, WHITE, LEVITON MODEL ODCOS-11W
⊖ <sup>18"</sup>	WALL MOUNT OCCUPANCY SENSOR, DUAL (ULTRASONIC & PASSIVE INFRARED) 32kHz, HUBBELL CAT No: ATD1600W, WITH CONTROL UNIT CU300A PROVIDES 24VDC FOR 1 TO 4 SENSORS.
⊖ <sup>18"</sup>	DISCONNECT SWITCH
⊖ <sup>18"</sup>	DUAL BUTTON HOLD-UP SWITCH, MOMENTARY BUTTON, AUTO-RESET, AMSECO MODEL HUSD-15BM
⊖ <sup>18"</sup>	AUTOMATED EXTERNAL DEFIBRILLATOR WITH SELF CONTAINED ALARM
⊖ <sup>18"</sup>	AUTOMATIC DOOR OPERATOR, SEE ARCH. DWG A2
⊖ <sup>18"</sup>	PANEL BOARD (FLUSH/SURFACE MOUNT)
⊖ <sup>18"</sup>	JUNCTION BOX (RECESSED)
⊖ <sup>18"</sup>	DIGITAL CONTROLLER FOR EVAPORATOR, WIRED WALL MOUNT, MITSUBISHI PAR-30MAU-J
⊖ <sup>18"</sup>	CENTRAL CONTROLLER FOR EVAPORATOR, MITSUBISHI AG-150, INCLUDES 24VDC POWER SUPPLY UNIT PAC-SC51KUA.
⊖ <sup>18"</sup>	MINI CONTROLLER FOR RTU-1, NETWORKABLE THERMOSTAT, & CONTROLLER, WITH BUILT-IN TEMPERATURE SENSOR, MODULATING ECONOMIZER CONTROL, MULTIPLE ANALOG CONTROL INPUTS, CO2 FOR DEMAND CONTROL VENTILATION, AND BACnet. AAOB R80670,
⊖ <sup>18"</sup>	CARBON DIOXIDE (CO2) TRANSMITTER/SENSOR, QEL MODEL CTS-M20 WITH POWER SUPPLY
⊖ <sup>18"</sup>	DIRECT-DRIVE ROOF EXHAUST FAN, SEE MECHANICAL DWG FOR SPECIFICATION.
⊖ <sup>18"</sup>	FIRE ALARM MANUAL PULL STATION (EXIST)
⊖ <sup>18"</sup>	FIRE BELL (EXIST)
⊖ <sup>18"</sup>	HEAT DETECTOR, CEILING RECESSED (EXIST)
⊖ <sup>18"</sup>	HEAT DETECTOR, CEILING SURFACE MOUNT (EXIST)
⊖ <sup>18"</sup>	PUBLIC ADDRESS MICROPHONE INPUT JACK
⊖ <sup>18"</sup>	PUBLIC ADDRESS SPEAKER (EXIST)
⊖ <sup>18"</sup>	DATA PORT TERMINATE TO EXISTING PATCH PANEL IN BASEMENT WIRING RM
⊖ <sup>18"</sup>	PHONE PORT
⊖ <sup>18"</sup>	KEY PAD/DISPLAY - SECURITY (EXIST)
⊖ <sup>18"</sup>	KEY SWITCH - SECURITY (EXIST)
⊖ <sup>18"</sup>	HORN - SECURITY (EXIST)
⊖ <sup>18"</sup>	MOTION DETECTOR- SECURITY

- DEMOLITION NOTES - POWER, DATA & COMMUNICATION**  
 --- D --- INDICATES TO BE DEMOLISHED  
 --- E --- INDICATES EXISTING
- DISCONNECT & REMOVE AUTOMATIC DOORS INCLUDING WIRING & ASSOCIATE EQUIPMENT FOR FUTURE REUSE. SEE RENOVATION DRAWING FOR NEW AUTOMATIC SLIDER DOORS. RETURN AUTOMATIC DOORS AND COMPONENTS TO 311 ROSS AVE. CONSULT PRIOR TO SHIPPING.
  - REMOVE & DISCONNECT POWER, DATA AND/OR VOICE COMPONENTS FROM WOOD FURNITURE, FLOOR OR WALLS - INCLUDING WIRING TO BE REMOVED BACK TO SOURCE (E.G. DISTRIBUTION PATCH, TERMINATION PANELS). ABANDONING OF POWER, DATA OR COMMUNICATION WIRING IS NOT PERMITTED AS MENTIONED IN GENERAL NOTES. WALL SURFACE MOUNT CONDUITS AND CLIPS SHALL BE REMOVED CLEAN FOR ARCHITECTURAL FINISHES.
  - REMOVE & DISCONNECT COMPONENTS & WIRING FROM WOOD FURNITURE FOR RELOCATION ONTO NEW FURNITURE. SEE RENOVATION DRAWING, INCLUDING PUBLIC ADDRESS SYSTEM ON EXISTING CASHIER COUNTER.
  - REMOVE & RETAIN BAR SCANNING DETECTOR PANELS & ASSOCIATED COMPONENTS.
  - RELOCATE AS SHOWN IN RENOVATION DRAWING.
  - REMOVE & REPLACE WITH NEW EVAPORATOR DISCONNECT SWITCH. SEE RENOVATION DRAWING.
  - REMOVE & DISCARD (2) EXHAUST FANS, TIMER SWITCHES, SURFACE MOUNT DUPLEX RECEPTACLES & SURFACE MOUNT SWITCHES - INCLUDING WIRING TO BE REMOVED BACK TO SOURCE.
  - ALL EMERGENCY LIGHTING, EXT LIGHTS & EMERGENCY BATTERY LIGHT UNITS TO BE REPLACED WITH NEW. SEE RENOVATION.
  - RELOCATE THERMOSTAT AS SHOWN IN RENOVATION DRAWING.
  - DISCONNECT SPEAKERS AND LEAVE WIRING IN PLACE FOR NEW SPEAKER LOCATION. SEE RENOVATION DRAWING.
  - REMOVE & DISCARD MOTORIZED DAMPER, MOTOR, CONDUIT & WIRING BACK TO SOURCE.
  - RELOCATE FLOOR POWER QUAD-RECEPTACLE & DATA TO NEW LOCATION, APPROX. 4 FEET SOUTH-EAST. SEE RENOVATION DRAWING.
  - REMOVE & DISCONNECT POWER & ASSOCIATE COMPONENTS BACK TO SOURCE - INCLUDING TUBING/ CONDUIT SUPPORTS ON ROOF.
  - REMOVE & DISCONNECT POWER & ASSOCIATE COMPONENTS - INCLUDING TUBING/ CONDUIT SUPPORTS ON ROOF. THIS 30A1 PH. 60HZ CIRCUIT WILL BE CONNECT TO NEW OUTDOOR CONDENSER UNIT (CU-1). SEE RENOVATION DRAWING.
  - REMOVE & DISCONNECT POWER & ASSOCIATE COMPONENTS - INCLUDING TUBING/ CONDUIT SUPPORTS ON ROOF. THIS 40A3 PH. 60HZ CIRCUIT WILL BE CONNECT TO NEW RTU UNIT. SEE RENOVATION DRAWING.
  - REMOVE A/C DIGITAL CONTROLLERS, MUA AIR A/C THERMOSTAT, MUA REMOTE PANEL & MOTION DETECTOR LIGHT SWITCH INCLUDING WIRING & CONDUIT BACK TO SOURCE. MOTION DETECTOR LIGHT SWITCH CIRCUIT TO BE RELOCATED AS SHOWN IN RENOVATION DRAWING. RELOCATE SECURITY MOTION DETECTOR TO NEW JANITOR RM. EXTERIOR SOUTH-EAST CORNER. SEE RENOVATION DWG.
  - RELOCATE SECURITY MOTION SENSOR TO EXTERIOR CORNER OF NEW JANITOR ROOM. SEE RENOVATION DRAWING.

**NOTES:**  
 THESE DRAWINGS SHALL NOT BE SCALED  
 THE CONTRACTOR SHALL VISIT THE SITE AND SATISFY ONESELF ALL DIMENSIONS, DATUM, AND DETAILED INFORMATION SHOWN ARE CORRECT.  
 THE CONTRACTOR IS TO REVIEW AND COORDINATE ALL ARCHITECTURAL, STRUCTURAL, MECHANICAL AND ELECTRICAL DRAWINGS FOR ADDITIONAL OPENINGS THROUGH FLOORS, WALLS, AND CEILINGS FOR DUCT, PIPE & ELECTRICAL RISERS AND ALL OPENINGS NOT SHOWN ON DRAWINGS.  
 THE MAIN ELECTRICAL PANEL IS "M" AND IS LOCATED IN THE BASEMENT ELECTRICAL ROOM BELOW THE ELECTRICAL METER.  
 SUB-ELECTRICAL PANEL "B" (WAS "200") IS ALSO LOCATED IN THE BASEMENT ELECTRICAL ROOM.  
 SUB-ELECTRICAL PANEL "100" IS LOCATED ON THE MAIN FLOOR BEHIND THE CIRCULATION COUNTER.  
 ALL OPENINGS THROUGH FIRE ASSEMBLIES INCLUDING FLOORS AND CEILINGS ARE TO BE FIRE STOPPED AND SEALED WITH ULC APPROVED FIRE STOPPING TO MAINTAIN THE INTEGRITY OF THE FIRE SEPARATION, AND PROVIDE A SMOKE-TIGHT BARRIER.  
 ALL PRODUCTS AND MATERIALS TO BE USED AND INSTALLED SHALL CONFORM WITH MANUFACTURER'S SPECIFICATIONS, APPLICABLE CODES AND AUTHORITY HAVING JURISDICTION.  
 THE CONTRACTOR SHALL BE RESPONSIBLE TO PATCH AND MAKE GOOD ALL EXISTING CONSTRUCTION AFFECTED BY THE REMOVAL OF ALL ITEMS FORMING PART OF THE RENOVATION WORK.  
 COORDINATE WHERE NEW FLOORING AND BASE IS TO BE INSTALLED IN EXISTING AREAS (REFER TO FLOOR PLAN AND ROOM SCHEDULE) THE EXISTING FLOORING SURFACE AND BASE MUST BE REMOVED, UNLESS OTHERWISE NOTED. ALL FLOOR SURFACES SHALL BE PREPARED IN ACCORDANCE TO MANUFACTURER'S RECOMMENDATIONS FOR INSTALLATION OF NEW FLOOR.  
 COORDINATE WHERE PAINTING OF EXISTING WALLS IS INDICATED ON THE ROOM SCHEDULE. THESE WALLS MUST BE CLEANED OF ANY EXISTING WALL COVERING, PATCHED & PREPARED TO ACCEPT NEW MATERIAL, UNLESS OTHERWISE NOTED.  
 ALL NEW LUMINAIRES & NEW RECEPTACLES TO BE CONNECTED TO APPROPRIATE PANELS.  
 GENERAL DUTY RECEPTACLES SHALL BE WHITE & CSA APPROVED, COW STAINLESS STEEL TRIM PLATES MOUNTED 18" ABOVE FINISHED FLOOR OR OTHERWISE NOTED.  
 NEW THERMOSTATS, OCCUPANCY LIGHT SWITCHES & FIRE ALARM PULL STATIONS SHALL BE MOUNTED 47" ABOVE FINISHED FLOOR OR OTHERWISE NOTED.  
 SUPPLY & INSTALL LAMACOD NAME PLATES ON ALL INCLUDING EXISTING PANEL BOARDS, EQUIPMENT, SWITCHES & RECEPTACLES. PANEL SCHEDULE SHALL BE TYPED & INSERTED TO INSIDE OF ASSOCIATED PANEL DOOR SLEEVE PROTECTOR.  
 ALL ABANDONED ELECTRICAL FIXTURES, COMPONENTS, RECEPTACLE & DATA WIRING SHALL BE REMOVED BACK TO SOURCE & TERMINATED AS PER APPLICABLE CODES.  
 RECONNECT & TEST ALL FIRE PREVENTION EQUIPMENT.  
 ALL LUMINAIRES & EQUIPMENT SHOWN CEILING MOUNTED SHALL HAVE ALL CONDUITS INSTALLED ON THE EXTERIOR SIDE OF THE ROOF DECK TERMINATING TO 3" DEEP OCTAGONAL BOX. SEE TYPICAL WOOD DECK CEILING OUTLET BOX INSTALLATION DETAIL, DRAWING EA.

No.	REVISION/DESCRIPTION	BY	DATE
SEAL			

DRAWN	DATE	CHECKED	DATE	DESIGNED	DATE	APPROVED
	2012.08.17	USER				

THE CITY OF WINNIPEG  
 PLANNING, PROPERTY AND  
 DEVELOPMENT DEPARTMENT  
 MUNICIPAL ACCOMMODATIONS DIVISION  
 3-65 GARRY STREET, R3C 4K4

**PROJECT**  
 FORT GARRY LIBRARY  
 INTERIOR & EXTERIOR REFURBISHING

1360 PEMBINA HWY  
**SHEET TITLE**  
 ROOF, MEZZANINE AND MAIN FLOOR PLANS  
 DEMOLITION  
 POWER, DATA AND COMMUNICATION

SCALE	PROJECT No:	SHEET No:
AS SHOWN	2011-096-01	E1