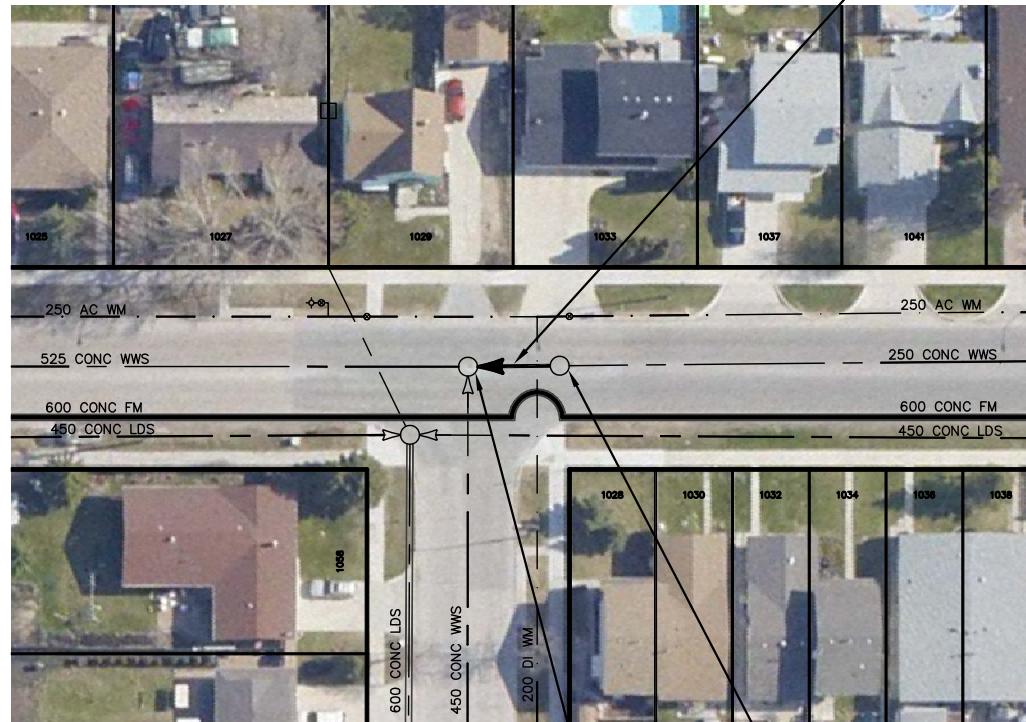


MCLEOD AVENUE

10.00 OF 250 CONC WWS
TO BE LINED S-MA70031589
(FULLY DETERIORATED)



LOUELDA ST

S-MH40005090
RIM
INV E 225.66
INV S 225.19
INV W 225.19

S-MH70044134
RIM
INV E
INV W

SEWER JUNCTION INFORMATION FROM SEWER VIDEO INSPECTION		
SEWER ID S-MA70031589		
DISTANCE FROM MH ID S-MH70044134		
DISTANCE	DIAMETER	CLOCK

WARNING

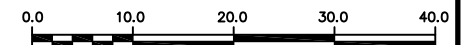
IF POWER EQUIPMENT OR EXPLOSIVES ARE TO BE USED FOR EXCAVATION ON THIS PROJECT THE CONTRACTOR MUST:

- 1) NOTIFY THE GAS COMPANY OF THE PROPOSED LOCATION OF EXCAVATION.
- 2) TAKE PRECAUTION TO AVOID DAMAGE TO GAS COMPANY INSTALLATIONS.

SEE PROVINCIAL REGULATION 210/72 FOR DETAILS

METRIC

WHOLE NUMBERS INDICATE MILLIMETRES
DECIMALIZED NUMBERS INDICATE METRES



LOCATION APPROVED
UNDERGROUND STRUCTURES

SUPV. U/G STRUCTURES COMMITTEE DATE

NOTE:
LOCATION OF UNDERGROUND STRUCTURES AS SHOWN ARE BASED ON THE BEST INFORMATION AVAILABLE BUT NO GUARANTEE IS GIVEN THAT ALL EXISTING UTILITIES ARE SHOWN OR THAT THE GIVEN LOCATIONS ARE EXACT. CONFIRMATION OF EXISTENCE AND EXACT LOCATION OF ALL SERVICES MUST BE OBTAINED FROM THE INDIVIDUAL UTILITIES BEFORE PROCEEDING WITH CONSTRUCTION.

B.M. ELEV.			
CONSTRUCTION COMPLETION DATE: YYYY MM DD			
NO.	REVISIONS	DATE	BY

DESIGNED BY	SC	CHECKED BY	SC
DRAWN BY	JB	APPROVED BY	KZ
SCALE:		RELEASED FOR CONSTRUCTION	
HORIZONTAL	1:750		
VERTICAL			
DATE	2012 08 20	DATE	

ENGINEER'S SEAL

ORIGINAL SIGNED BY
S.R.J. COURNOYER
AUG. 15, 2012

CONSULTANT DRAWING NUMBER
-



THE CITY OF WINNIPEG
WATER AND WASTE DEPARTMENT
ENGINEERING DIVISION

2012 SEWER RENEWALS
BY CIPP LINING
MCLEOD AVENUE
1ST MH E OF LOUELDA STREET TO
MH AT LOUELDA STREET

SHEET 21 OF 36
CITY DRAWING NUMBER
10351

PLOT DATE: 2012 08 20

BID OPPORTUNITY: ??-????
CONTRACT NUMBER: ??

FILE PATH: R:\DRAWINGS\SEWER\2012_RENEWALS\CIPP, TPR, and EPR\CONTRACT 11\CIPP LINING\
FILE NAME: MCLEOD.dwg