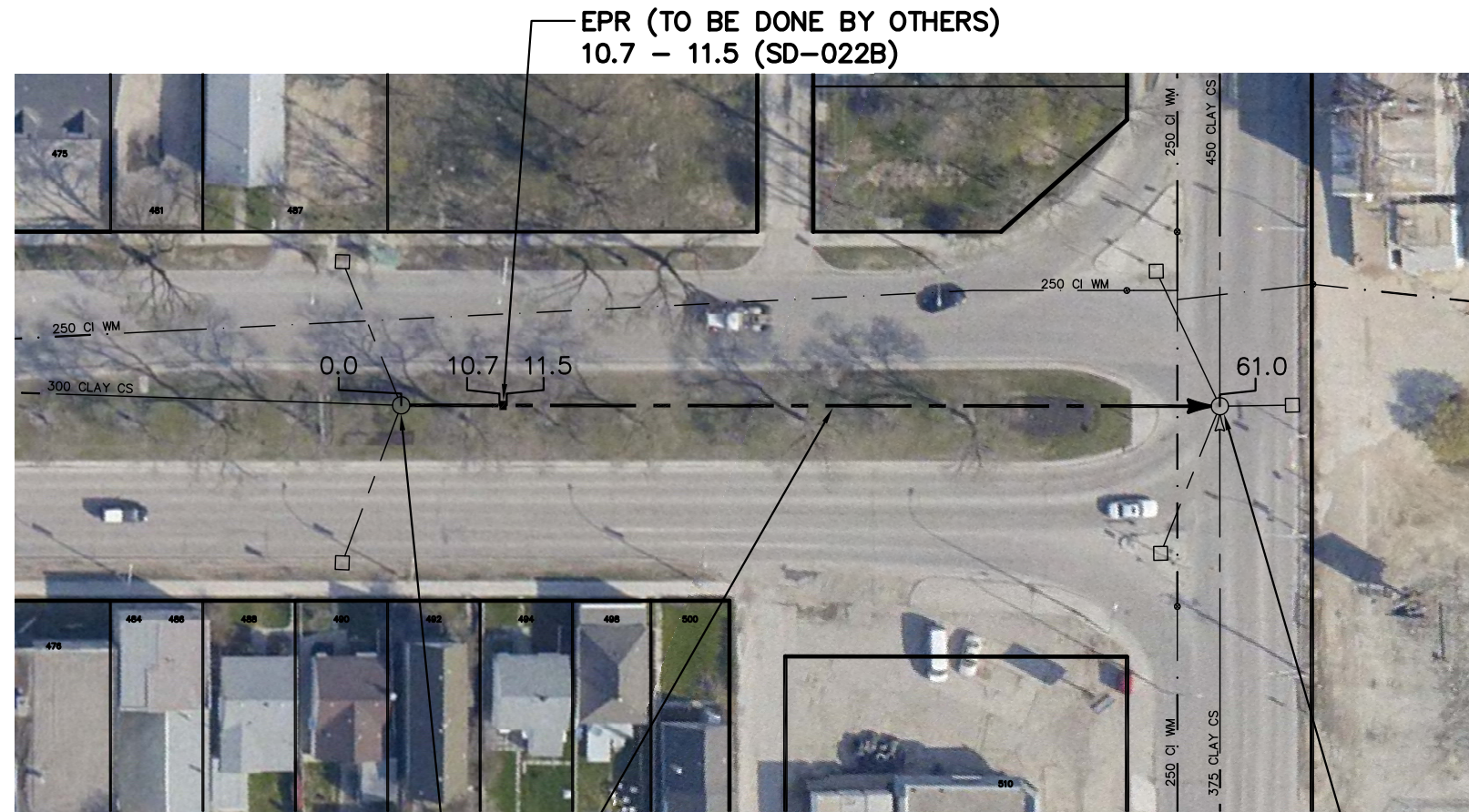


# PROVENCHER BOULEVARD



S-MH50008108  
RIM 231.06  
INV E 226.48  
INV W 226.49

90.50 OF 300 CLAY CS  
TO BE LINED S-MA50009854  
(FULLY DETERIORATED)

S-MH50008101  
RIM 230.43  
INV S 226.17  
INV W 226.28  
INV N 226.17

ARCHIBALD ST

SEWER JUNCTION INFORMATION FROM SEWER VIDEO INSPECTION		
SEWER ID S-MA50009854		
DISTANCE FROM MH ID S-MH50008108		
DISTANCE	DIAMETER	CLOCK
2.6	150	10
3.8	150	1
4.8	150	11
10.6	150	10
11.1	150	10
11.4	150	1
20.2	150	2
29.3	150	10
30.0	150	2
39.2	150	10
39.8	150	2
40.8	150	11

## WARNING

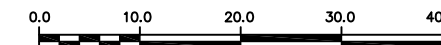
IF POWER EQUIPMENT OR EXPLOSIVES ARE TO BE USED FOR EXCAVATION ON THIS PROJECT THE CONTRACTOR MUST:

- 1) NOTIFY THE GAS COMPANY OF THE PROPOSED LOCATION OF EXCAVATION.
- 2) TAKE PRECAUTION TO AVOID DAMAGE TO GAS COMPANY INSTALLATIONS.

SEE PROVINCIAL REGULATION 210/72 FOR DETAILS

## METRIC

WHOLE NUMBERS INDICATE MILLIMETRES  
DECIMALIZED NUMBERS INDICATE METRES



LOCATION APPROVED  
UNDERGROUND STRUCTURES

SUPV. U/G STRUCTURES COMMITTEE DATE

NOTE:  
LOCATION OF UNDERGROUND STRUCTURES AS SHOWN ARE BASED ON THE BEST INFORMATION AVAILABLE BUT NO GUARANTEE IS GIVEN THAT ALL EXISTING UTILITIES ARE SHOWN OR THAT THE GIVEN LOCATIONS ARE EXACT. CONFIRMATION OF EXISTENCE AND EXACT LOCATION OF ALL SERVICES MUST BE OBTAINED FROM THE INDIVIDUAL UTILITIES BEFORE PROCEEDING WITH CONSTRUCTION.

B.M. ELEV.			
CONSTRUCTION COMPLETION DATE: YYYY MM DD			
NO.	REVISIONS	DATE	BY

DESIGNED BY	SC	CHECKED BY	SC
DRAWN BY	JB	APPROVED BY	KZ
SCALE:		RELEASED FOR CONSTRUCTION	
HORIZONTAL	1:750		
VERTICAL			
DATE	2012 08 20	DATE	
PLOT DATE:	2012 08 20		

ENGINEER'S SEAL

ORIGINAL SIGNED BY  
S.R.J. COURNOYER  
AUG. 15, 2012

CONSULTANT DRAWING NUMBER  
-



**THE CITY OF WINNIPEG**  
WATER AND WASTE DEPARTMENT  
ENGINEERING DIVISION

2012 SEWER RENEWALS  
BY CIPP LINING  
**PROVENCHER BOULEVARD**  
1ST MH E OF LA FLECHE STREET TO  
MH AT ARCHIBALD STREET

SHEET 29 OF 36  
CITY DRAWING NUMBER

10359