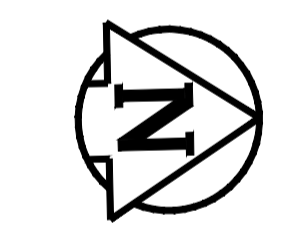
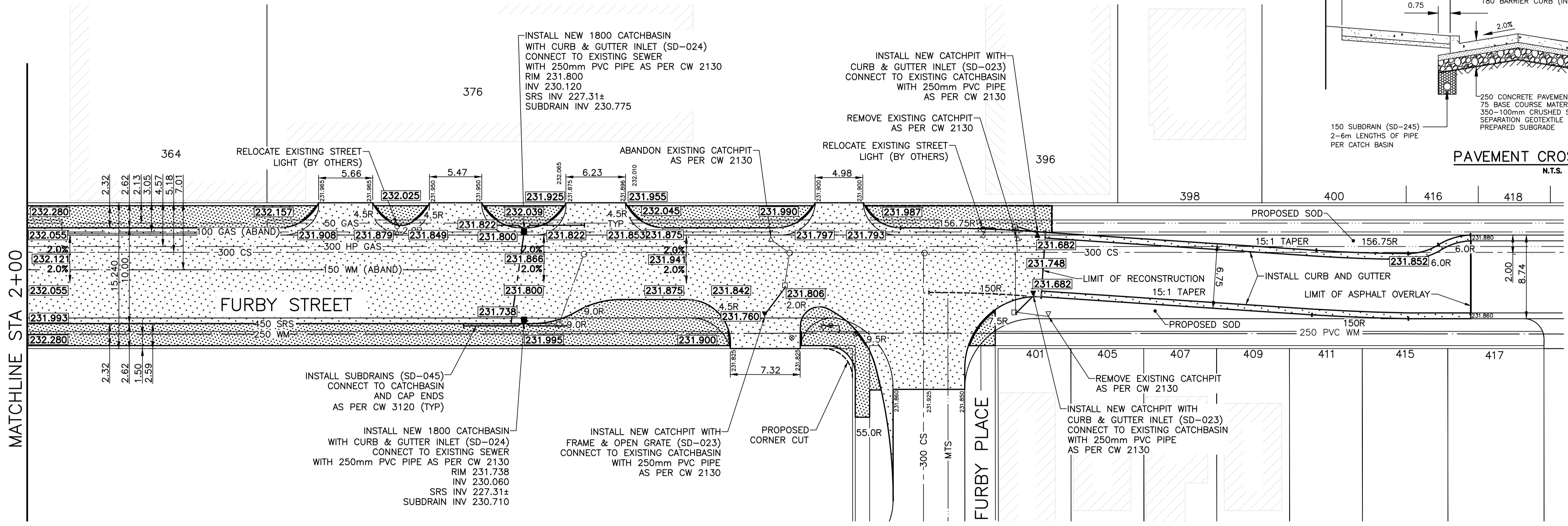
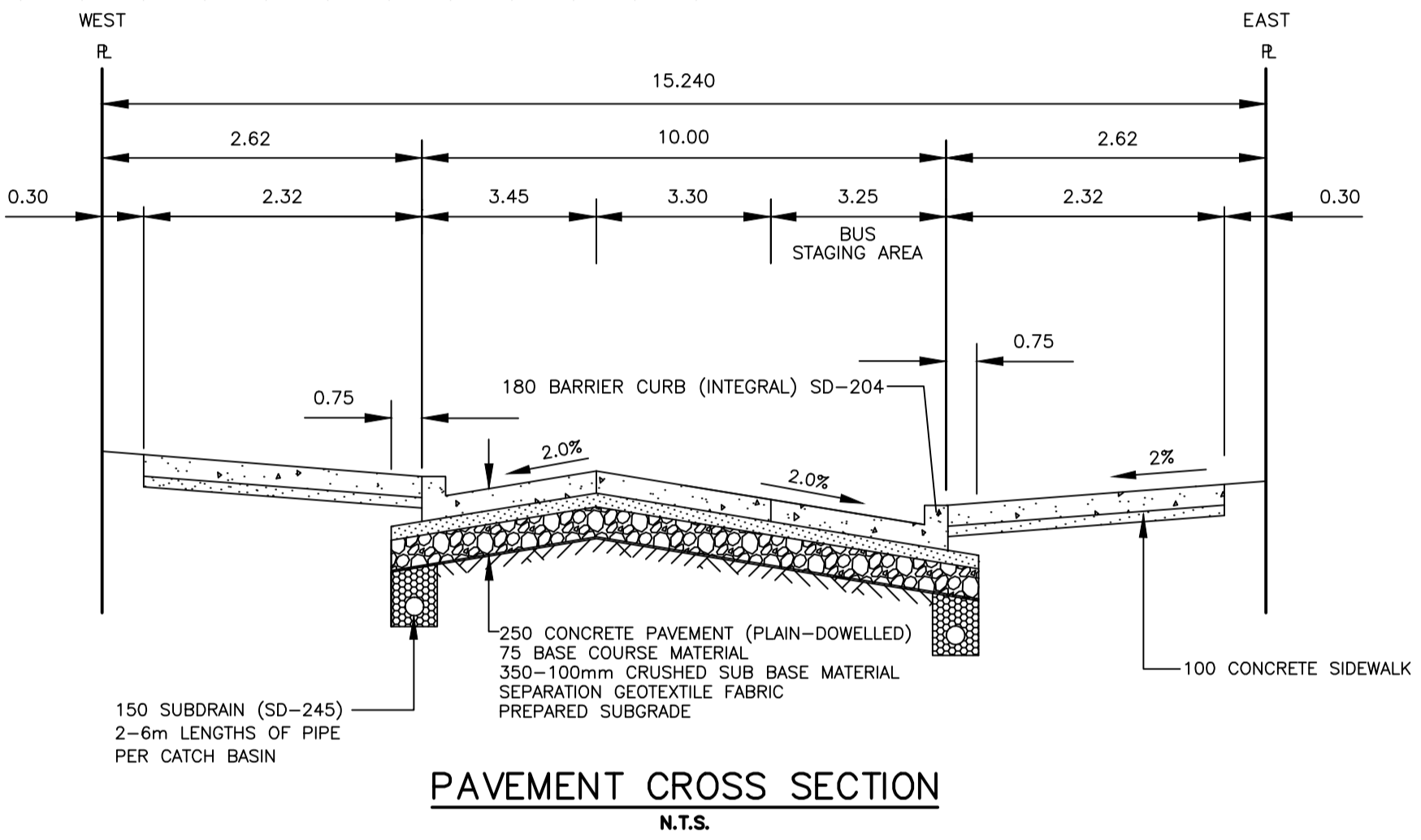


Working in the proximity of high pressure gas main
 The proposed road reconstruction of Furby Street crosses over an existing 323.9mm high pressure natural gas main. The following parameters shall be followed when working in proximity to all natural gas mains:

- (a) A Manitoba Hydro High Pressure Safety Watch is required for all construction activities within 3.0m of the high pressure natural gas main.
- (b) Prior to construction expose the main by hydro-excavation every 25m in order to confirm elevation of the pipe.
- (c) All excavations within 1.0m of any natural gas main must be completed by hand or Hydro-excavation.
- (d) A minimum 900mm of cover shall be maintained in all areas where equipment will be crossing, traveling or compacting over the 323.9mm gas main. Vibratory compaction cannot be used over or within 3.0m of a main where there will be less than 1.0m of cover.
- (e) A minimum 600mm cover shall be maintained in all areas where equipment will be crossing, traveling or compacting over the 60.3mm gas main. Vibratory compaction cannot be used over or within 3.0m of a main where there will be less than 1.0m of cover.
- (f) If equipment must cross, travel or compact over the gas main with less than the minimum depth of cover, earth bridging or steel plates shall be placed over the main and extend a minimum of 1.0m on either side at each crossing location.
- (g) Caution must be used to ensure the integrity of the pipeline coating. Any damages to the coating must be reported and repaired by Manitoba Hydro prior to backfilling.



CONSTRUCTION NOTES

- 1) CURB REPLACEMENT AS DIRECTED BY THE CONTRACT ADMINISTRATOR.
- 2) ALL STREET RADIUS CURB UNDER 15M RADIUS SHALL BE REPLACED AS MODIFIED OR AS DIRECTED BY THE CONTRACT ADMINISTRATOR.
- 3) PAVEMENT REPAIRS SHOWN ARE ONLY A REPRESENTATIVE SAMPLE OF THE TENDERED QUANTITIES
- 4) ASPHALT TIE-INS ON APPROACHES TO BE DETERMINED IN THE FIELD BY THE CONTRACT ADMINISTRATOR.

WARNING

IF POWER EQUIPMENT OR EXPLOSIVES ARE TO BE USED FOR EXCAVATION ON THIS PROJECT THE CONTRACTOR MUST:

- 1) OBTAIN CLEARANCE FROM THE GAS UTILITY PRIOR TO EXCAVATION.
- 2) TAKE PRECAUTION TO AVOID DAMAGE TO GAS UTILITY INSTALLATIONS.

SEE PROVINCIAL REGULATION 210/72 FOR DETAILS

PRELIMINARY
 NOT TO BE USED FOR CONSTRUCTION

BID OPPORTUNITY NO. 634-2012

EXISTING	LEGEND - PLAN	PROPOSED	EXISTING	LEGEND - PLAN	PROPOSED	EXISTING	LEGEND - PROFILE	PROPOSED
⊕	HYDRANT	⊕	---	LDS/WWS	---	---	EAST GUTTER	---
⊙	VALVE	⊙	---	WATERMAIN	---	---	CENTER LINE	---
⊚	CURB STOP	⊚	---	GAS	---	---	WEST GUTTER	---
▨	CONCRETE SIDEWALK	▨	---	TRAFFIC SIGNALS	---	---	EAST PROPERTY LINE	---
○	O.L.S.	○	---	CONCRETE	---	---	WEST PROPERTY LINE	---
○	MANHOLE	○	---	CURB RENEWAL	---	---		---
□	CATCH BASIN	□	231.000	ELEVATIONS	[231.000]	---		---
△	CURB INLET	△	---	PROPERTY LINE	---	---		---
☆	HYDRO POLE	☆	---	SURVEY BAR	---	---		---
⊕	TRAFFIC SIGNAL POLE	⊕	---	PAVING STONE	---	---		---
▨	ASPHALT	▨	---	RAMP CURB	---	---		---

LOCATION APPROVED UNDERGROUND STRUCTURES

DATE

NOTE:
 LOCATION OF UNDERGROUND STRUCTURES AS SHOWN ARE BASED ON THE BEST INFORMATION AVAILABLE. BUT NO GUARANTEE IS GIVEN THAT ALL EXISTING UTILITIES ARE SHOWN OR THAT THE GIVEN LOCATIONS ARE EXACT. CONFIRMATION OF EXISTENCE AND EXACT LOCATION OF ALL SERVICES MUST BE OBTAINED FROM THE INDIVIDUAL UTILITIES BEFORE PROCEEDING WITH CONSTRUCTION.

NO.	ISSUED FOR TENDER	DATE	BY
1	ISSUED FOR TENDER	12/08/20	R.C.
	REVISIONS		

B.M. I.B. S.SIDE FURBY ST AT PORTAGE AVE ELEV. 232.065

ENGINEERING DIVISION
TECHNOLOGY SERVICES BRANCH
 106 - 1155 PACIFIC AVE

DESIGNED BY: R.M.
 CHECKED BY: D.T./R.C.

DRAWN BY: R.M.
 APPROVED BY:

HOR. SCALE: 1 : 250
 VERTICAL: 1 : 10

DATE: 2012/08/20

ENGINEER'S SEAL

THE CITY OF WINNIPEG
 PUBLIC WORKS DEPARTMENT

FURBY STREET
 FROM PORTAGE AVENUE TO FURBY PLACE
 PAVEMENT RECONSTRUCTION
 FROM STA. 2+00 TO STA. 3+25

CITY DRAWING NUMBER SE-12-48
 SHEET 2 OF 3

2