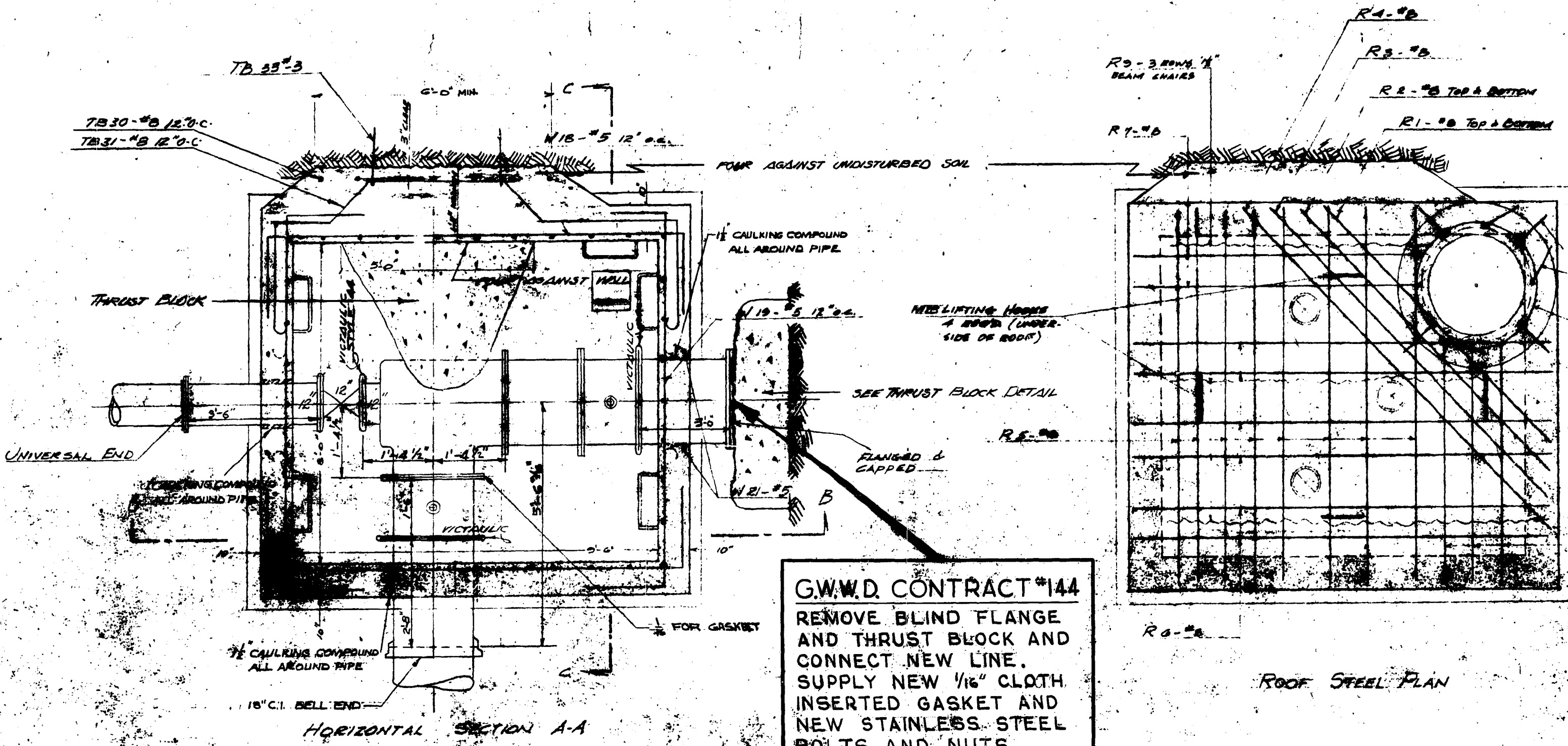


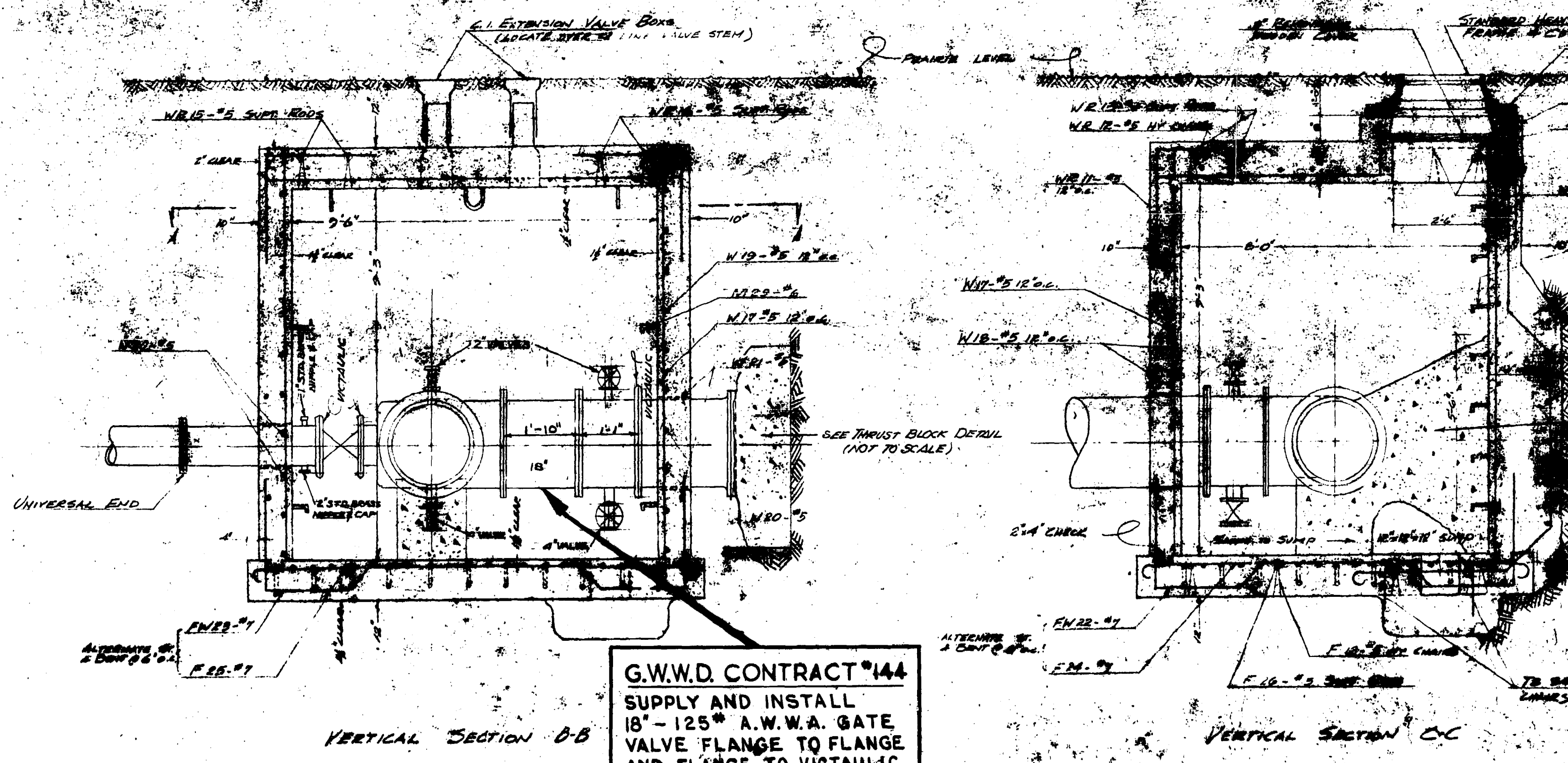
REINFORCING STEEL SCHEDULE

MARK	SIZE	NO. REBAR	LENGTH	TYPE	LOCATION
R1	#8	2	9'-11"	10' HOOK	ROOF SAAB
R2	#8	2	10'-11"	10' HOOK	"
R3	#8	1	11'-11"	10' HOOK	"
R4	#8	1	12'-11"	10' HOOK	"
R5	#8	6	12'-6"	10' HOOK	"
R6	#8	3	11'-6"	10' HOOK	"
R7	#8	2	9'-7"	10' HOOK	"
R8	#8	3	8'-0"	10' HOOK	"
R9	20	17	18" W. BEAM CHAINS		
R10	#4	6	8'-3"		RET. ROOF SLAB & P.H.
NR11	#5	28	8'-0"		CONCRETE FORM BARS TO ROOF SLAB
NR12	#5	36	2'-7"		20" W. BEAM CHAINS TO P.H. FLOOR SLAB
NR13	#5	2	6'-8"	STRAIGHT	SUPP. RODS FOR SLAB
NR14	#5	2	8'-6"		
NR15	#5	2	8'-0"		
NR16	#5	2	8'-3"		
NR17	#5	36	10'-1"	VERY STRAIGHT IN WALLS @ 12" O.C.	
NR18	#5	20	14'-9"		
NR19	#5	20	15'-3"		
NR20	#5	8	4'-0"		
NR21	#5	8	3'-0"		
FR22	#7	11	15'-2"		SHORT SPAN FLOOR SLAB
FR23	#7	9	16'-0"		LONG SPAN FLOOR SLAB
FR24	#7	10	11'-8"		SHORT SPAN FLOOR SLAB
FR25	#7	8	12'-3"		LONG SPAN FLOOR SLAB
FR26	#7	4	12'-6"	STRAIGHT	SUPP. RODS FOR FLOOR SLAB
NR27	#5	7	9'-11"		LOCATE IN WALL BARREL
NR28	#5	4	2'-5 1/2"		LIFTING HOOPS TO BE PLACED ON UNDER-SIDE OF ROOF
FR29	#6	16	3'-7"		CASING IN PLACE STAY & GROUND. MAY BE GALVANIZED AFTER BENDING. USE 5" PROJECTION FROM CONC. WALL.
TS30	#8	7	16'-2"		VERTICAL IN THRUST WALL
TS31	#8	7	10'-5"		HORIZONTAL IN THRUST WALL

CONTINUED UPPER RIGHT HAND CORNER.



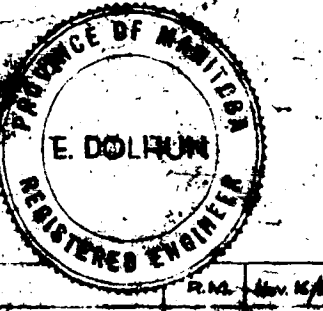
G.W.W.D. CONTRACT #144
 REMOVE BLIND FLANGE AND THRUST BLOCK AND CONNECT NEW LINE.
 SUPPLY NEW 1/16" CLOTH INSERTED GASKET AND NEW STAINLESS STEEL BOLTS AND NUTS.



G.W.W.D. CONTRACT #144
 SUPPLY AND INSTALL
 18" - 125" A.W.W.A. GATE VALVE FLANGE TO FLANGE AND FLANGE TO VICTAULIC ADAPTER WITH VENT AND DRAIN.

TS32	#5	1	6'-6"	STRAIGHT	DRIVEN IN GROUND TO SUPP. TS31 & TS2
TS33	#3	17	1'-7"	5" HOOK	DRIVEN IN GROUND TO SUPP. TS30
TS34	#1	14	1'-5"	5" HOOK	DRIVEN IN GROUND TO SUPP. TS30

REMARKS
 1. ALL CAST IRON PIPING & FITTINGS ARE CLASS 150.
 2. ALL CONCRETE IS 3000 P.S.I. & AIR ENTRAINMENT RESISTANT. AIR ENTRAINMENT MUST BE TRANSMIT MIXES.
 3. SEE GENERAL LAYOUT PLAN C-1 FOR LOCATION OF VALVE PIT.



NO.	DESCRIPTION	BY	DATE
1	REVISED TO AS BUILT	R.M.	JUN 1958
2	LENGTH OF REBAR REBAR	R.M.	JUN 1958
3	VALVE & FITTINGS SHOWN 18"	R.M.	JUN 1958
4	PIPE ENDS REVISION	R.M.	JUN 1958

E.M. EMERSON
 AS BUILT DETAIL OF
VALVE - PIT 'D'
 LOCATED AT
 FLORIDGE AVE. & HANLEY ST.
 TEMERSON ENGINEERING COMPANY
 DESIGNED BY: E.D. SCALE: 1/4" = 1'-0" PLAN NO. 0-6-158
 DRAWN BY: W.T.D. DATE: AUG 14 1958
 APPROVED BY: S.K. JUNE 1958