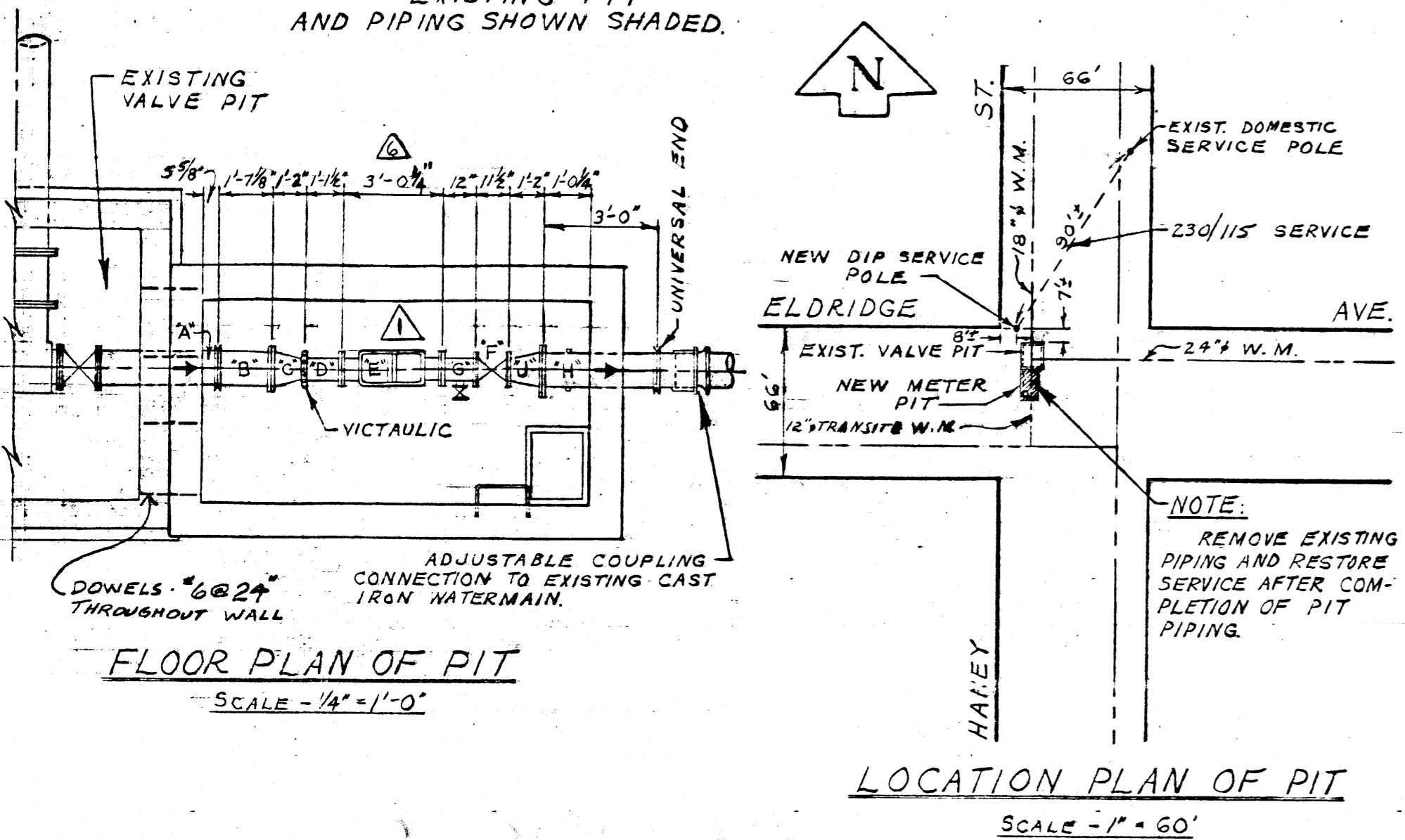
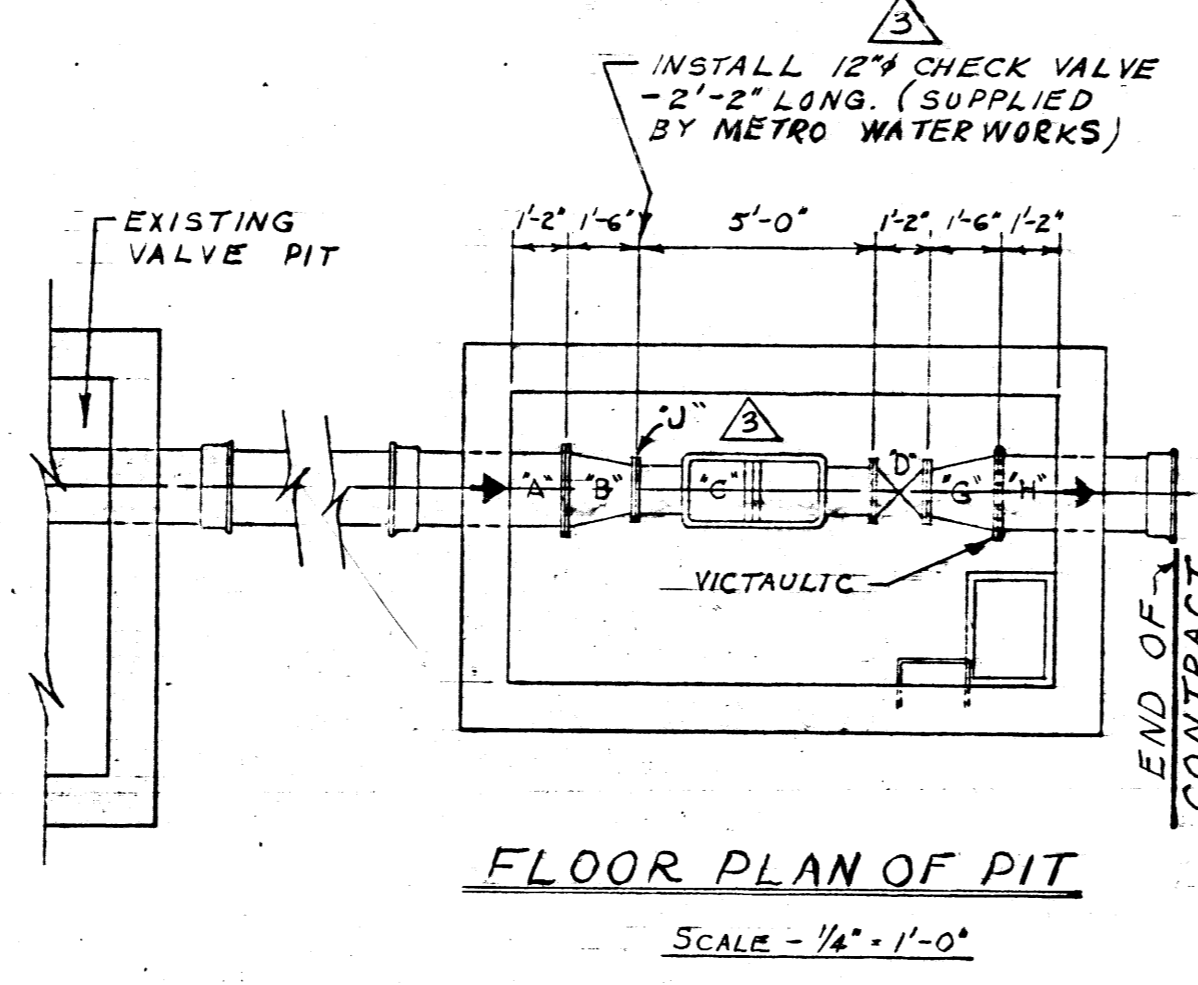


NOTE: EXISTING PIT AND PIPING SHOWN SHADED.



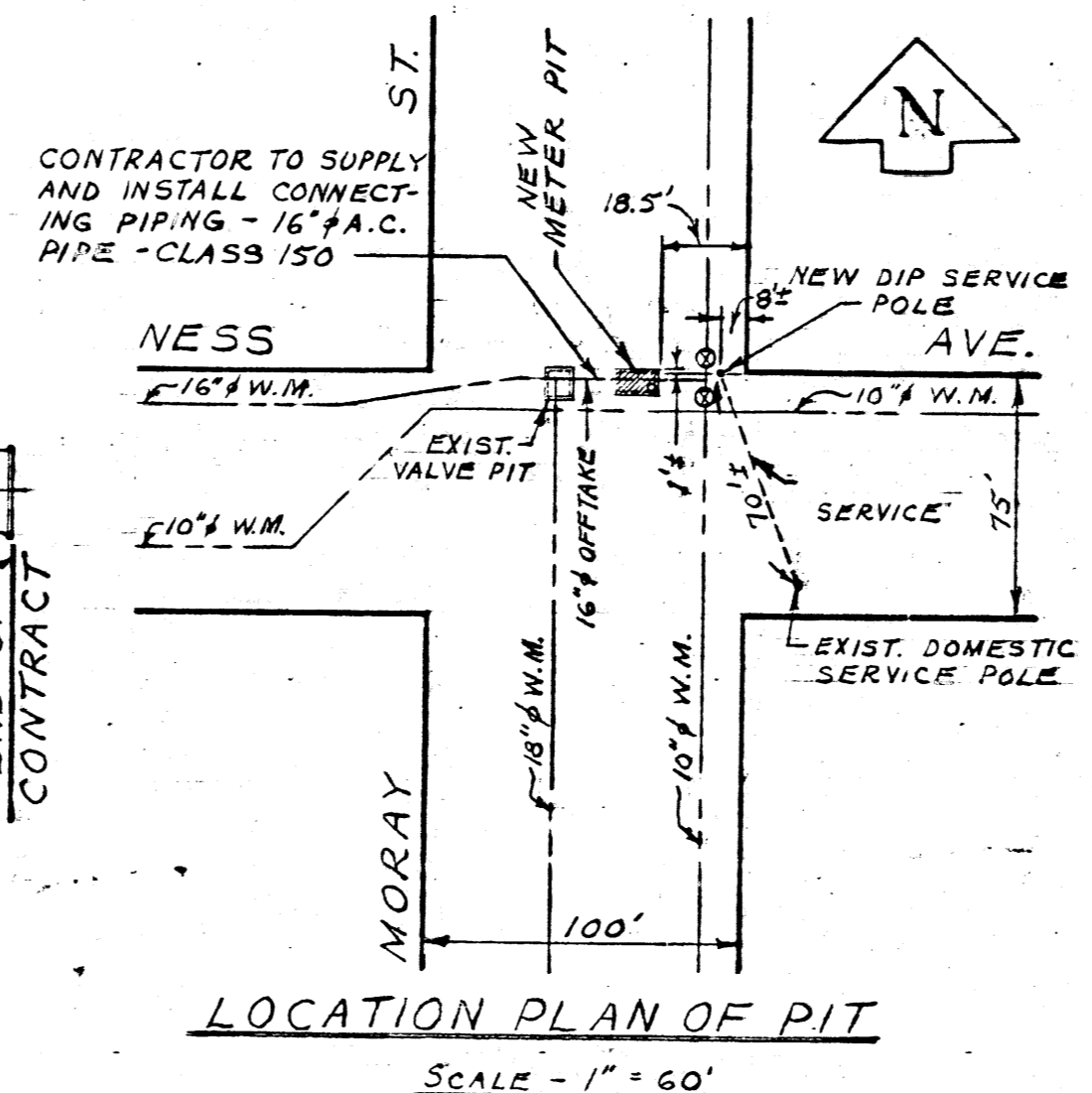
HANEY & ELDRIDGE PIT

NOTE: EXISTING PIT AND PIPING SHOWN SHADED.



MORAY & NESS PIT

NOTE: VALVE PIT & METER PIT DEMOLISHED & ABANDONED. REFER TO DWG. D-1609 & D-1610.



LOCATION PLAN OF PIT

LOCATION OF METER PIT	FLOOR ELEV.	6" OF PIPE ELEV.	ROOF ELEV. (TYP)	GROUND ELEV.
MORAY ST. AND NESS AVE. PIT	769.68	772.18	777.00	779.00
HANEY ST. AND ELDRIDGE AVE. PIT	759.95	762.45	770.2	772.2
HANEY ST. AND HEDLEY AVE. PIT	759.88	762.38	769.6	771.6

LIST OF NOTES

- NOTE #1: CAST IRON PIPE - 3'-0" LONG. (CAST IRON BELL TO FLANGE) CONCRETE RING 1'-7" FROM FLANGED END.
- NOTE #2: CAST IRON PIPE - 3'-0" LONG. (CAST IRON BELL TO FLANGE.) CONCRETE RING 1'-7" FROM FLANGED END AND 2'-1" TAPPED HOLES ON OPPOSITE SIDES OF CAST IRON PIPE AT 6" FROM FLANGE WITH BRASS PLUG.
- NOTE #3: SAME AS NOTE #2, EXCEPT THE CAST IRON PIPE HAS A UNIVERSAL FEMALE END TO FLANGED END.
- NOTE #4: SAME AS NOTE #2, EXCEPT SUBSTITUTE VICTAULIC FOR FLANGE.

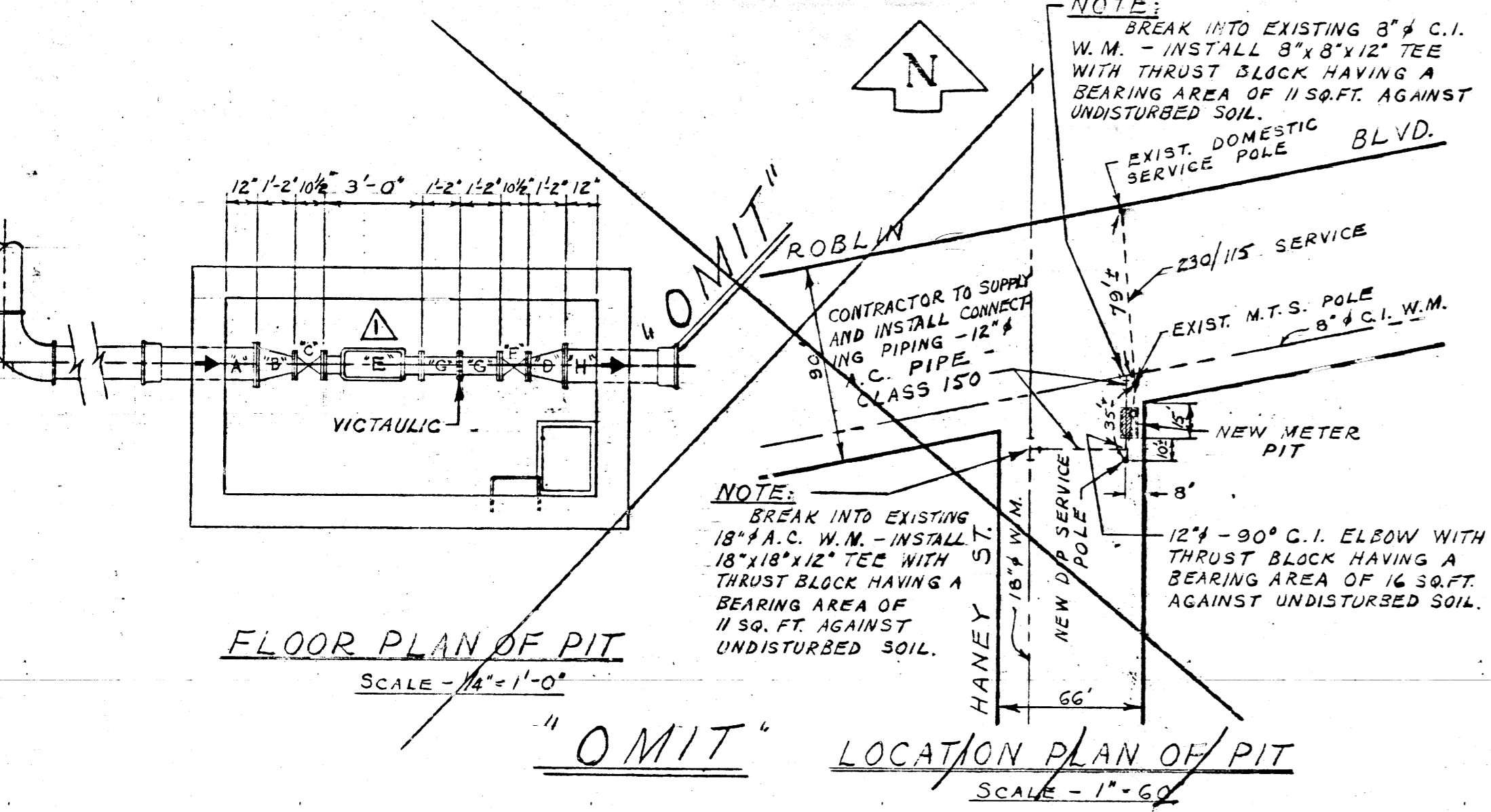
MATERIALS FOR PITS

ITEM	HANEY AND ELDRIDGE PIT	HANEY AND GRANT PIT	MORAY AND PORTAGE PIT	MORAY AND NESS PIT
A	EXIST. 12" C.I. PIPE (UNIVERSAL END)	12" C.I. PIPE (SEE NOTE #1)	10" C.I. PIPE (SEE NOTE #1)	16" C.I. PIPE (SEE NOTE #1)
B	12" C.I. PIPE (UNIVERSAL TO FLANGE)	12" X 6" FLANGED REDUCER	10" X 8" FLANGED REDUCER	16" X 12" FLANGED REDUCER
C	12" X 8" REDUCER (FLANGE TO VICTAULIC)	6" GATE VALVE FLANGED	8" GATE VALVE FLANGED	FISHER-PORTER METER VALVE FLANGED
D	8" C.I. PIPE (VICTAULIC TO FLANGE)	12" X 6" FLANGED REDUCER	8" FLANGED C.I. PIPE - 1'-0" LONG.	12" GATE VALVE FLANGED
E	FOXBORO METER 3'-0" LONG	FOXBORO METER 3'-0" LONG	FOXBORO METER 3'-0" LONG	NOT REQUIRED.
F	8" GATE VALVE FLANGED	6" GATE VALVE FLANGED	10" X 8" REDUCER (VICTAULIC TO FLANGE)	NOT REQUIRED.
G	8" FLANGED C.I. PIPE - 1'-0" LONG.	2" C.I. PIPES (FLANGE TO VICTAULIC)	10" C.I. PIPE (FLANGE TO VICTAULIC)	16" X 12" REDUCER (VICTAULIC TO FLANGE)
H	12" C.I. PIPE (SEE NOTE #3)	12" C.I. PIPE (SEE NOTE #2)	10" C.I. PIPE (SEE NOTE #2)	16" C.I. PIPE (SEE NOTE #4)
J	12" X 8" FLANGED REDUCER			12" FLANGED CHECK VALVE.

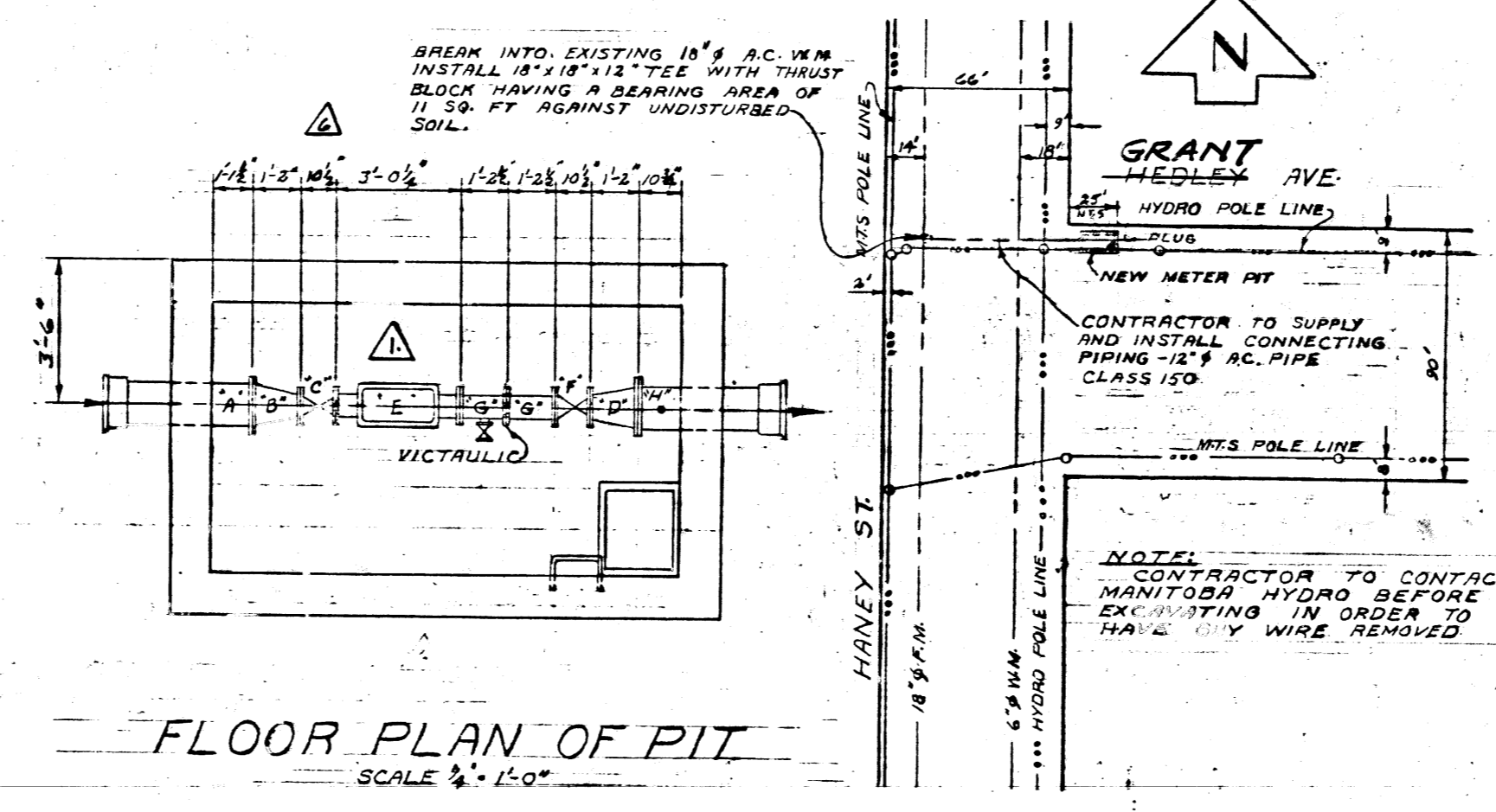
\* ITEMS "G" TO HAVE 3/8" TAPPED HOLE ON SIDE WITH SHORT NIPPLE AND 3" GATE VALVE. ONLY ONE NIPPLE IN HANEY-MORAY PIT TO HAVE 3/8" TAPPED HOLE WITH NIPPLE AND 3" GATE VALVE.  
NOTE: SEE DRAWING No. D-889 FOR STANDARD METER PIT DETAILS.

REVISIONS				THE METROPOLITAN CORPORATION OF GREATER WINNIPEG WATERWORKS AND WASTE DISPOSAL DIVISION WATERWORKS BRANCH	
NO.	DESCRIPTION	DATE	BY	APPROVED BY	DESIGNED BY
1	LOCATION & DIMENSIONS OF FITTINGS CHANGED AT HANEY-ELDRIDGE AND MORAY-NESS PITS	2/24/61	S.K.		
2	ITEM "J" ADDED AND NOTE FOR HANEY-ELDRIDGE PIT ADDED	2/24/61	S.K.		
3	12" CHECK VALVE ADDED TO MORAY-NESS PIT	5/11/61	S.K.		
4	TABLE OF METER PIT FLOOR ROOF ELEVATIONS (GROUND & OF PIPE)	5/11/61	S.K.		
5	HANEY & ROBLIN PIT RELOCATED TO HANEY & HEDLEY	10/10/61	AK		
6	METER DIMENSIONS REVISED	11/10/61	AK		
7	HEDLEY CHANGED TO GRANT	11/10/61	AK		

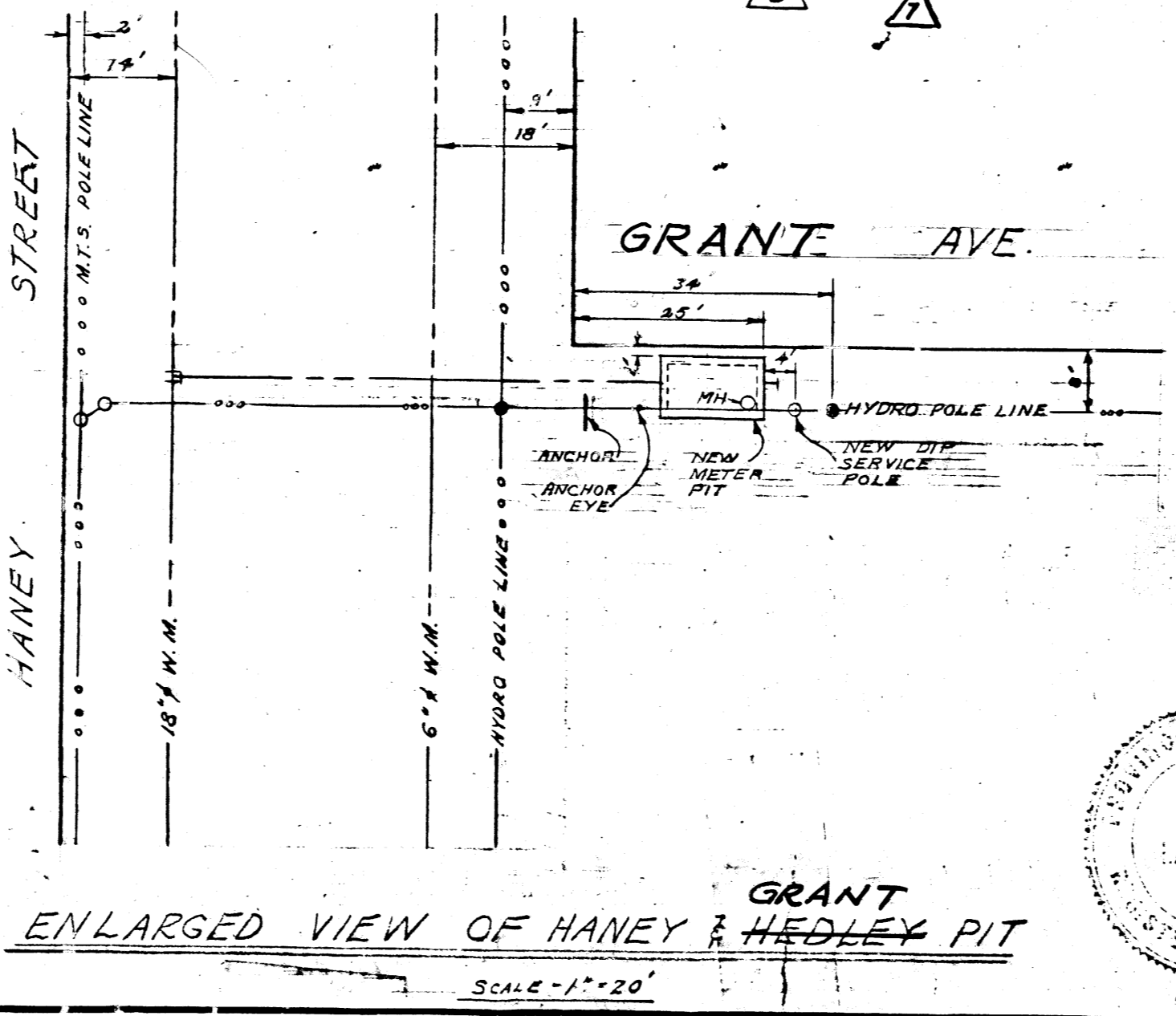
HANEY - MORAY & ASSINIBOIA FLEET MAINT. METER PITS PIPING AND LOCATION PLANS  
APPROVED BY: [Signature] CHIEF ENGINEER  
DESIGNED BY: [Signature] DATE: APRIL 61  
CHECKED BY: [Signature] DATE: APRIL 61  
DRAWING NO. D-890  
AS NOTED.



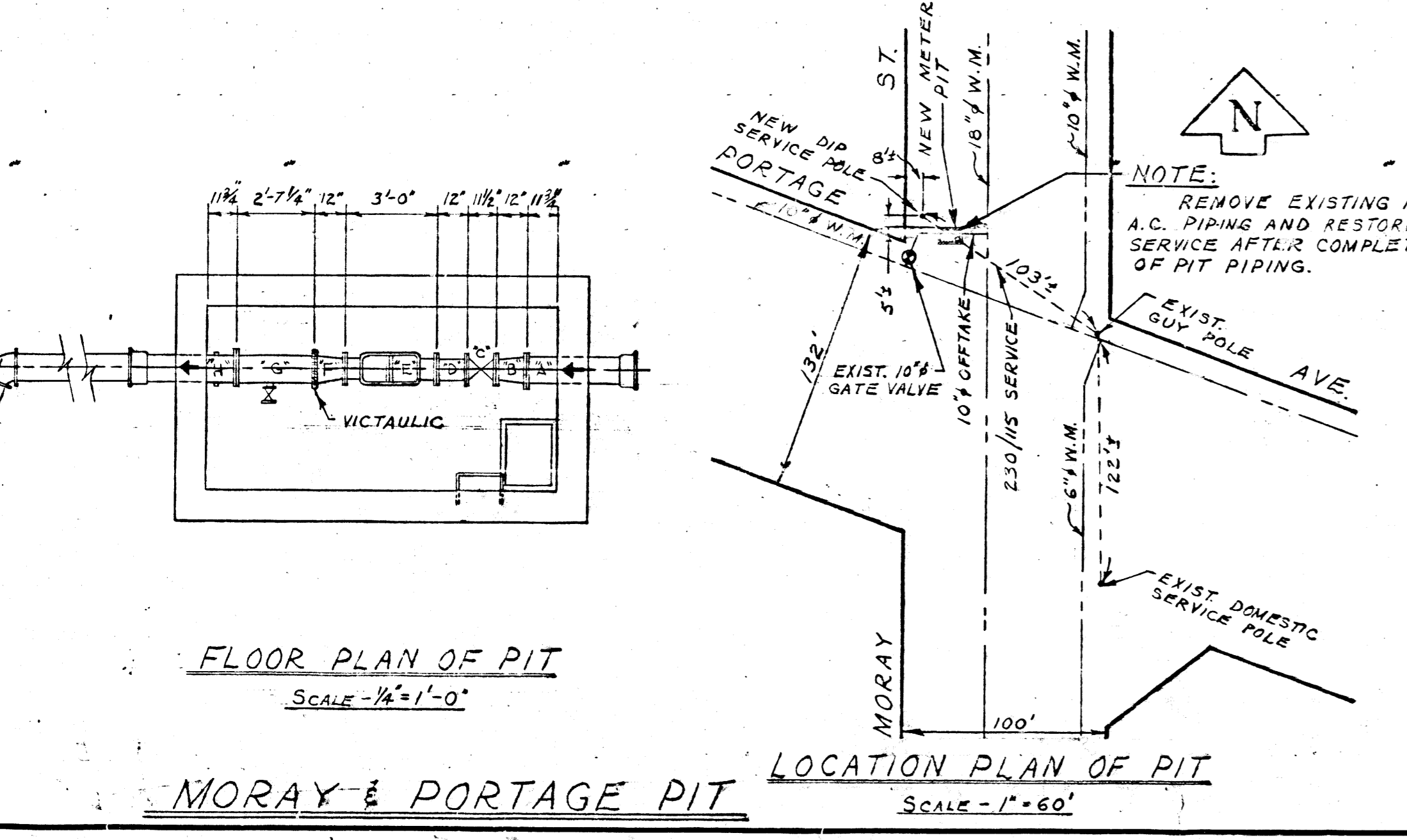
HANEY & ROBLIN PIT



HANEY & HEDLEY PIT



ENLARGED VIEW OF HANEY & HEDLEY PIT



MORAY & PORTAGE PIT

D-0890

City of Winnipeg  
W002338