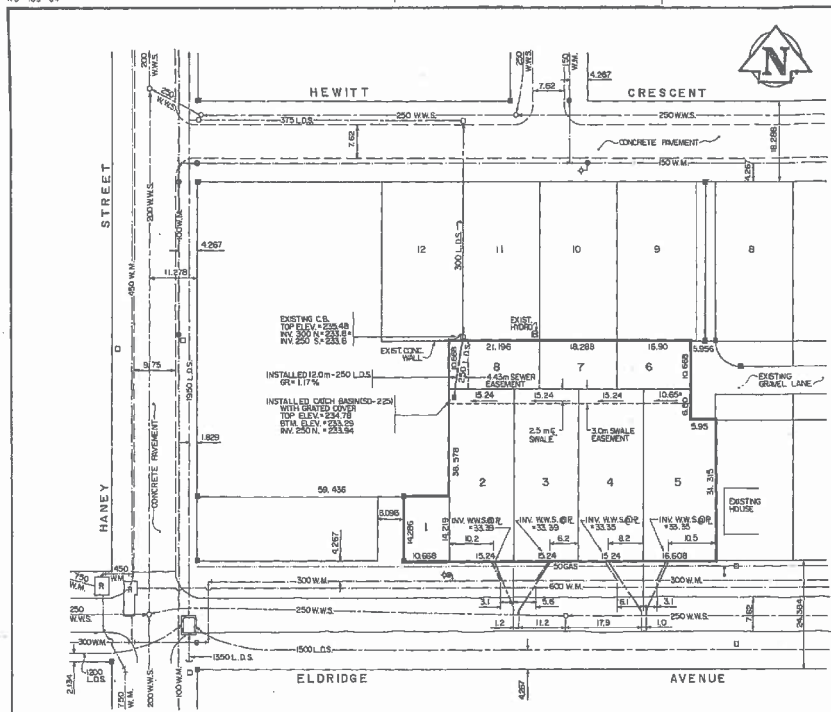
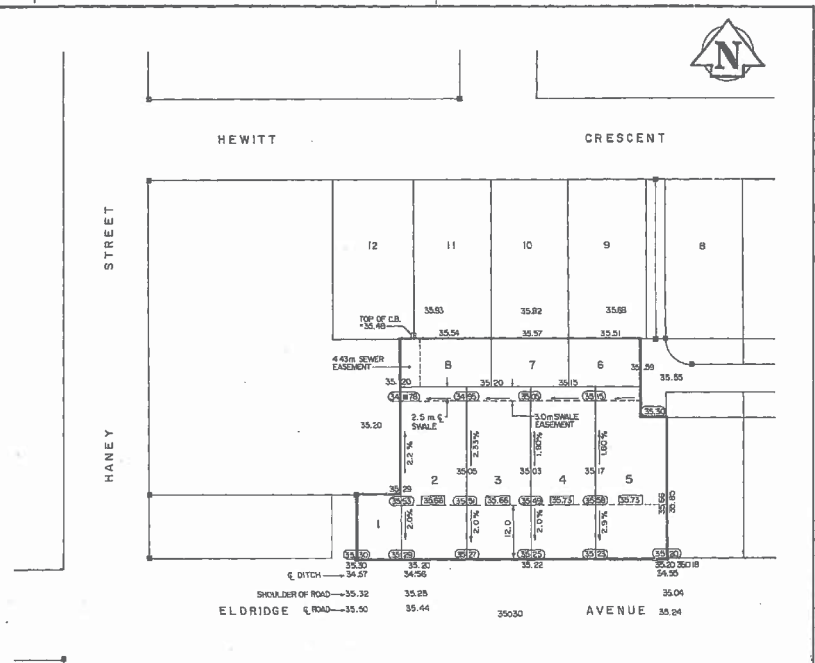


REF. OF DRAWING No. **ELDRIDGE AVE.**
DETAILS EAST OF HANEY ST.
LOT CONNECTIONS

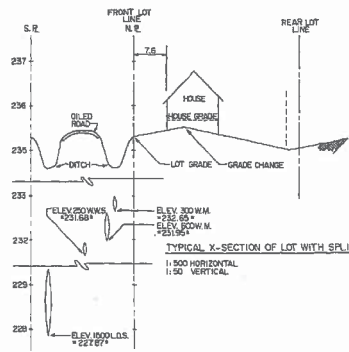


GENERAL LAYOUT PLAN

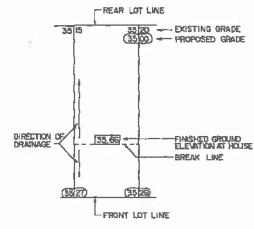


LOT GRADE PLAN

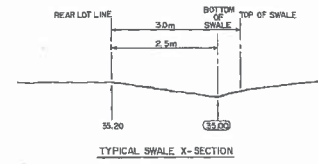
MATERIAL LIST	TYPE	SUPPLIER
SEWERS	PVC-SDR 35	EMCO
SEWER SADDLES	PVC-S.S. BOLTED COPPER	EMCO
WATER SERVICES	MUESLER	EMCO
COMBINATION STOPS (W/NET TRAPPED)		
CATCH BASIN	PRECAST CONCRETE	SUPERCRETE
FRAME & COVER	CAST IRON	TITAN-EMCO



TYPICAL X-SECTION OF LOT WITH SPLIT DRAINAGE
 1:500 HORIZONTAL
 1:50 VERTICAL



LOT GRADE LEGEND
 1:500



TYPICAL SWALE X-SECTION
 SWALE LEGEND
 35.20 EXISTING ELEVATION
 35.00 BOTTOM OF SWALE ELEVATION

WARNING

IF POWER EQUIPMENT OR EXPLOSIVES ARE TO BE USED FOR EXCAVATION ON THIS PROJECT THE CONTRACTOR MUST:
 1) NOTIFY THE GAS COMPANY OF THE PROPOSED LOCATION OF EXCAVATION.
 2) TAKE PRECAUTION TO AVOID DAMAGE TO GAS COMPANY INSTALLATIONS.
 SEE MUNICIPAL REGULATION 310.73 FOR DETAILS.

METRIC

WHOLE NUMBERS INDICATE MILLI METRES
 DECIMALIZED NUMBERS INDICATE METRES

BENCH MARK: S.E. COR. HANEY ST. AND ELDRIDGE AVE., T41T IN S. CONV. FOUNDATION OF CHARLESWOOD HERMITAGE, CHURCH, 5.0m W. OF THE PRODUCTION OF THE E.L.V. WALL, AND 0.0m BELOW TYPICAL STONE. ELEV. = 236.828 m

DWG # 5W-1046

EXISTING	LEGEND-PLAN	PROPOSED	EXISTING	LEGEND-PLAN	PROPOSED	EXISTING	LEGEND-PROFILE	PROPOSED
150 mm W.M.	WATERMAIN	150 mm W.M.	HYDRANT	HYDRANT	150 mm W.M.	WATERMAIN	HYDRANT	HYDRANT
300 mm L.D.S.	LAND DRAINAGE SEWER	300 mm L.D.S.	VALVE	CONCRETE	300 mm L.D.S.	VALVE	CONCRETE	CONCRETE
150 mm W.M.	WASTE WATER SEWER	150 mm W.M.	MANHOLE	PROPERTY LINE	150 mm W.M.	WASTE WATER SEWER	PROPERTY LINE	PROPERTY LINE
	CATCH BASIN		CURB INLET	SURVEY BAR				
	JUNCTIONS		CULVERT					
	GAS							

LOCATION APPROVED UNDERGROUND STRUCTURES
 TOWN OF WINNIPEG
 COMMITTEE

NOTE:
 LOCATION OF UNDERGROUND STRUCTURES AS SHOWN ARE BASED ON THE BEST INFORMATION AVAILABLE. THE CONTRACTOR IS RESPONSIBLE FOR VERIFYING THE LOCATION AND DEPTH OF ALL EXISTING UTILITIES AND STRUCTURES AND FOR OBTAINING THE NECESSARY PERMITS AND APPROVALS FROM THE APPROPRIATE AGENCIES AND THE LOCATION OF ALL SERVICES MUST BE VERIFIED FROM THE ORIGINAL UTILITIES BEFORE PROCEEDING WITH CONSTRUCTION.

NO.	REVISIONS	DATE	BY
3	REVISED TO AS-BUILT	07-31-07	J.C.
2	ADDED SEWER EASEMENT	06-08-07	J.C.
1	REVISED LOT GRADINGS AND CATCH BASIN ELEVATIONS	06-08-07	J.C.

RESIGNED BY: G.A.P.
 CHECKED BY: G.A.P.
 DRAWN BY: J.C.
 APPROVED BY: G.A.P.
 HORIZONTAL SCALE: 1:500
 VERTICAL SCALE: AS SHOWN
 RELEASED FOR CONSTRUCTION: [DATE]
 CONSULTANT DRAWING NO.: 6-86-106

THE CITY OF WINNIPEG
 WORKS AND OPERATIONS DIVISION
 OPERATIONS DEPARTMENT - DISTRICT 6

ELDRIDGE AVENUE
EAST OF HANEY STREET

CITY DRAWING NUMBER: []
 SHEET: [] OF []