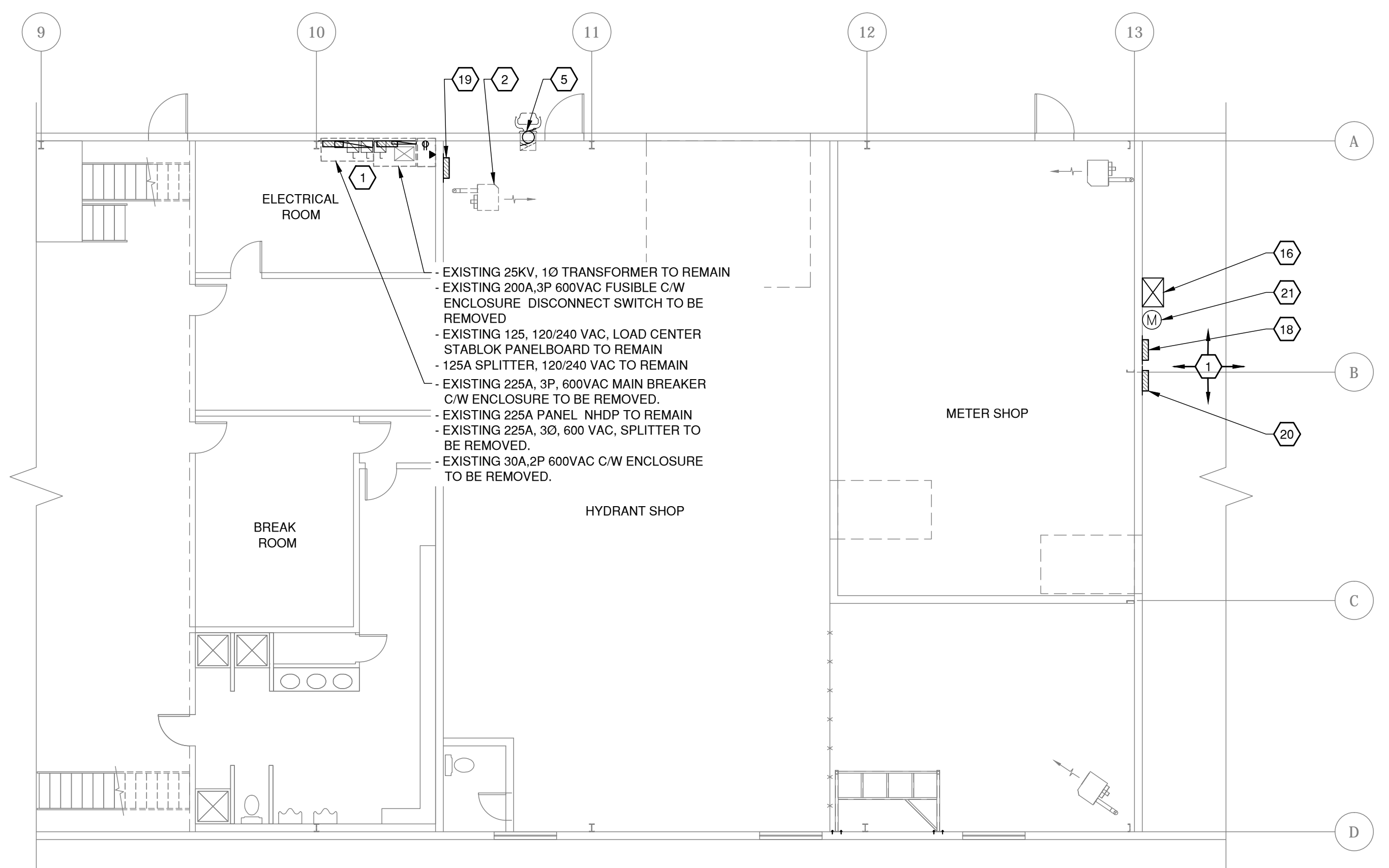
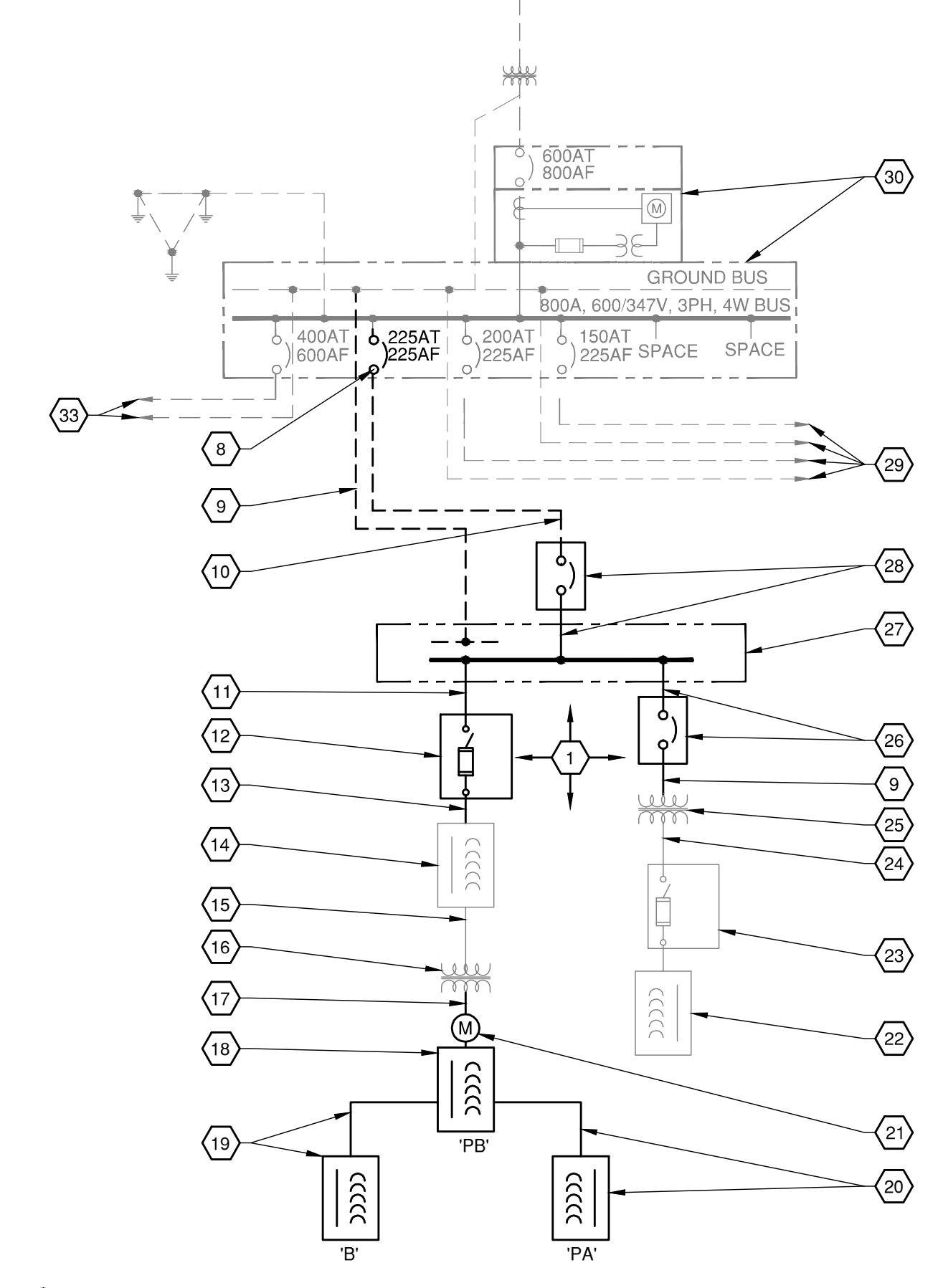


1 DEMOLITION PLAN W/O MEZZANINE
1:100



2 DEMOLITION PLAN WITH MEZZANINE
1:100



3 DEMOLITION OF EXISTING ELECTRICAL DISTRIBUTION
1:150

SHEET KEYNOTES

- 1 REFER TO EXISTING SINGLE LINE DIAGRAM ON THIS DRAWING FOR THE ITEMS TO BE DEMOLISHED. TEMPORARY GENSET SHALL BE PROVIDED FOR TEMPORARY POWER DURING MAJOR POWER SHUTDOWN. COORDINATE PROPOSED SCHEDULE OF POWER SHUTDOWN WITH OWNER.
- 2 EXISTING GAS FIRED UNIT HEATER TO BE REMOVED. RETAIN EXISTING FEEDER AND RECONNECT TO HEATERS.
- 3 EXISTING FURNACE UNIT TO BE UPGRADED. DISCONNECT AND REMOVED EXISTING FEEDERS AND CONDUIT BACK TO SOURCE PANEL.
- 4 EXISTING CONDENSING UNIT TO BE UPGRADED. DISCONNECT AND REMOVED EXISTING FEEDERS AND CONDUITS BACK TO SOURCE OF PANEL.
- 5 EXISTING EXHAUST FAN TO BE REMOVED. DISCONNECT AND REMOVED EXISTING FEEDERS AND CONDUITS BACK TO SOURCE OF PANEL.
- 6 EXISTING ROOF MOUNTED EXHAUST FAN TO BE UPGRADED. DISCONNECT AND REMOVED EXISTING FEEDERS AND CONDUITS BACK TO SOURCE OF PANEL.
- 7 EXISTING MAKE-UP AIR UNIT TO BE UPGRADED. DISCONNECT AND REMOVED EXISTING FEEDERS AND CONDUITS BACK TO SOURCE OF PANEL.
- 8 EXISTING CIRCUIT BREAKER TO REMAIN AS SPARE.
- 9 DISCONNECT AND REMOVE EXISTING GROUNDING WIRE.
- 10 DISCONNECT AND REMOVE EXISTING POWER CABLE AND PROVIDE PULL WIRE OR PULL NEW POWER AT THE SAME TIME; AS PER E-2, KEYNOTES.
- 11 DISCONNECT AND REMOVE EXISTING 3C#3/0 C/W 41mm Ø EMT CONDUIT.
- 12 DISCONNECT AND REMOVE EXISTING MAIN 200A 600VAC, FUSIBLE DISCONNECT SWITCH C/W ITS ENCLOSURE.
- 13 DISCONNECT AND REMOVE EXISTING 3C#3/0 C/W 41mm Ø EMT CONDUIT.
- 14 EXISTING PANEL 'NHDP' TO REMAIN.
- 15 EXISTING PRIMARY FEEDER TO REMAIN.
- 16 EXISTING 75KV DRYTYPE TRANSFORMER 600:120/208V, 3Ø, 4W TO REMAIN.
- 17 DISCONNECT AND REMOVE EXISTING PRIMARY FEEDER CABLE C/W ASSOCIATED CONDUIT RUN.
- 18 DISCONNECT AND REMOVE EXISTING PANEL PB 200A, 120/208V, 3Ø, 4W, CCTS = 42.
- 19 DISCONNECT AND REMOVE EXISTING PANEL B 200A, 120/240V, 1Ø, 3W, CCTS = 36 C/W INCOMING FEEDER CABLE AND CONDUITS RUN.
- 20 DISCONNECT AND REMOVE EXISTING EXISTING PANEL 'PA' 120/208V, 3Ø C/W INCOMING MAIN FEEDER CABLE AND CONDUITS RUN.
- 21 DISCONNECT AND REMOVE EXISTING CUSTOMER METERING.
- 22 EXISTING 120/240V, 1Ø STABLOCK PANELBOARD TO REMAIN.
- 23 EXISTING MAIN 100A, 250V FUSED SWITCH TO REMAIN.
- 24 EXISTING 3#3, 25mmØ EMT CONDUIT TO REMAIN.
- 25 25KVA, 600-120/240V 1Ø, 3W, TRANSFORMER TO REMAIN.
- 26 DISCONNECT AND REMOVE EXISTING 3ØA, 2P, BREAKER C/W ENCLOSURE AND ASSOCIATED LINE AND LOAD FEEDER CABLES AND CONDUITS.
- 27 DISCONNECT AND REMOVE EXISTING 225A, 3Ø, 600VAC SPLITTER.
- 28 DISCONNECT AND REMOVE EXISTING 225A, 3P BREAKER C/W ENCLOSURE AND ASSOCIATED LOAD SIDE FEEDER CABLE AND CONDUITS.
- 29 TO EXISTING PARKING LOT ENERGY CONTROL DISTRIBUTION PANEL AND EXISTING WATER BUILDING/STORAGE GARAGE DISTRIBUTION PANEL.
- 30 EXISTING MAIN SERVICE ENTRANCE DISTRIBUTION AND METERING EXTERIOR PAD MOUNTED, CSA 3 ENCLOSURE TO REMAIN.
- 31 EXISTING 1' x 4' SUSPENDED FLUORESCENT LIGHT FIXTURES TO REMAIN.
- 32 EXISTING PANEL 37.5KVA, 1Ø, TRANSFORMER, FED FROM ELECTRICAL ROOM 225A, 600V TO REMAIN.
- 33 TO OFFICE/GARAGE DISTRIBUTION PANEL.
- 34 EXISTING PANEL A 200A, 120/240VAC, 1Ø TO REMAIN.
- 35 EXISTING 1' x 4' SUSPENDED FLUORESCENT LIGHT FIXTURES TO BE DISCONNECTED AND REMOVED FROM EXISTING CIRCUIT.

- GENSET TEMPORARY POWER INSTALLATION:**
- 1.0 CONTRACTOR TO COORDINATE WITH THE CITY ABOUT TEMPORARY POWER SCHEDULING REQUIREMENT, POWER SHUTDOWN, EQUIPMENT LOCATION BEFORE ROUGH-IN.
 - 2.0 UPON APPROVAL BY THE CITY, CONTRACTOR TO SUPPLY AND INSTALL TEMPORARY GENSET C/W 225A-3P MAIN BREAKER, 225A, 3Ø/600VAC, 3Ø, 4W PANEL, 200A-3P AND 3ØA-2P BRANCH BREAKERS AND ASSOCIATED FEEDER CABLES TO SUIT THE TEMPORARY POWER CONNECTION.
 - 3.0 DISCONNECT AND REMOVE THE INCOMING MAIN POWER FEEDER CABLE FOR WASTE WATER BUILDING GARAGE C/W 225A-3Ø FUSIBLE DISCONNECT SWITCH, EXISTING 225A, 3Ø SPLITTER BOX, DOWN STREAM 200A-3P FUSIBLE DISCONNECT SWITCH AND 3ØA-2P BREAKER INCLUDING ASSOCIATED ENCLOSURE AND FEEDER CABLES.
 - 4.0 SUPPLY AND INSTALL TEMPORARY POWER AND WIRING FROM TEMPORARY GENSET BRANCH BREAKER TO EXISTING 225A, PANEL NHDP AND 25KVA SINGLE PHASE TRANSFORMER PRIMARY. (SEE DETAIL 283 FOR TEMPORARY POWER CONNECTION POINT).

EXISTING SITE CONDITION
THE ASSESSMENT AND ANY POTENTIAL REQUIRED UPGRADING OF THE EXISTING ROOF FRAME STRUCTURE OF THIS BUILDING HAS NOT BEEN INCLUDED IN THE SCOPE OF THIS PROJECT AS HAS BEEN DIRECTED BY THE CLIENT - THE CITY OF WINNIPEG. THE CONTRACTORS SHALL NOT ADD ANY LOAD TO THE EXISTING ROOF STRUCTURE FOR ANY REASON BEYOND SPECIFIED IN THE PROJECT PLANS AND SPECIFICATIONS WITHOUT APPROPRIATE REVIEW AND APPROVAL OF A PROFESSIONAL ENGINEER.

ASBESTOS CONTAINING MATERIALS ARE PRESENT ON-SITE.
REFER TO PROJECT SPECIFICATIONS.
ANY SUSPECT ASBESTOS-CONTAINING MATERIALS SHALL BE CONSIDERED AS ASBESTOS-CONTAINING UNTIL DETERMINED OTHERWISE.

FOR PRICING ONLY
NOT FOR CONSTRUCTION

B.M. ELEV.	GENIVAR 10 PRARIE WAY WINNIPEG, MANITOBA R2J 3J8 PH: (204)-233-2113 FAX: (204)-233-2080		ENGINEERS SEAL
DESIGNED BY	D.G/S.N	CHECKED BY	R.M
DRAWN BY	O.N	APPROVED BY	R.M
0 ISSUED FOR PRICING	2012/06/22 R.M.	HOR. SCALE:	AS NOTED
B ISSUED FOR FINAL REVIEW	2012/06/16 R.M.	VERT. SCALE:	AS NOTED
A ISSUED FOR CLIENT REVIEW	2012/07/24 R.M.	RELEASED FOR CONSTRUCTION	
NO. REVISIONS	DATE	DATE	2012/06/26

THE CITY OF WINNIPEG
WATER AND WASTE DEPARTMENT

Winnipeg

HVAC AND ELECTRICAL UPGRADE
552 PLINGUET STREET
WASTEWATER SERVICES GARAGE AND ADJACENT BUILDINGS

CITY DRAWING NO. SHEET 8 OF 10

DEMOLITION PLANS

E-2