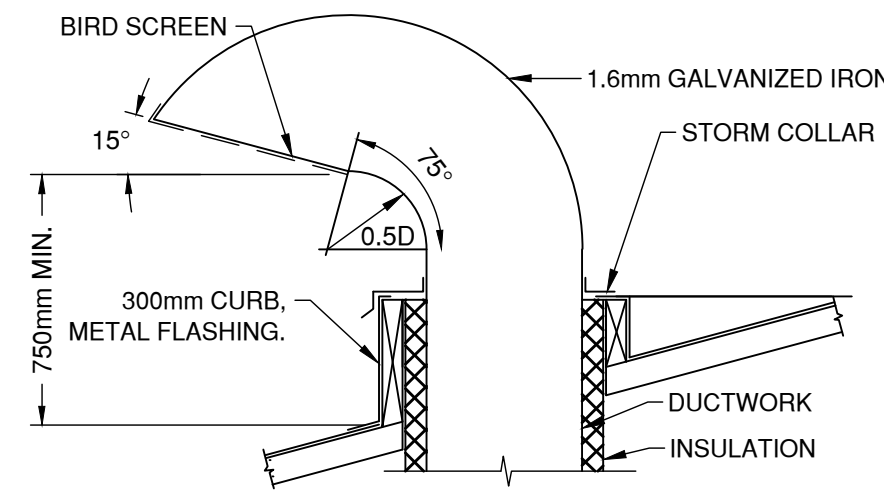


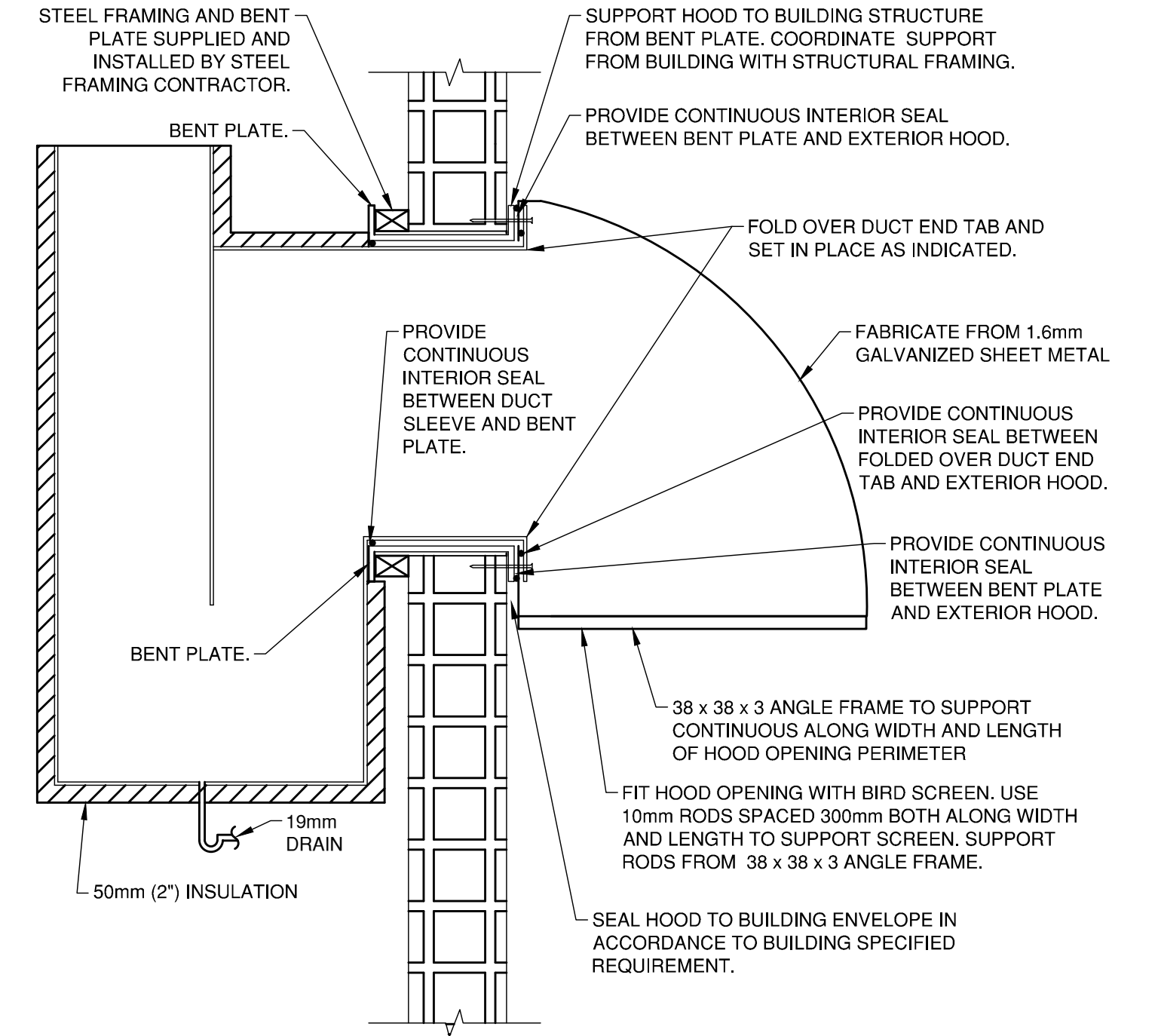
1 GAS FIRED UNIT HEATER VENTING DETAIL

SCALE: N.T.S.



2 ROOF TOP GOOSENECK DETAIL

SCALE: N.T.S.



4 COMBUSTION AIR INLET DETAIL

SCALE: N.T.S.

DESIGNATION	DESCRIPTION	PRODUCT MANUFACTURER	MODEL NO.	WEIGHT (kg)	AIR VOLUME		OUTDOOR AIR VOLUME		STATIC PRESSURE		HEATING/COOLING CAPACITY (kW)	REFR.	POWER REQUIREMENTS			NOTES	ACCEPTED EQUALS
					L/s	CFM	L/s	CFM	Pa	in WC			VOLTAGE	FLA	WATTS		
MUA-1	MAKE-UP AIR UNIT	ENGINEERED AIR	DG180/MV	1724	4,719	10,000	4719	10,000	249.1	1.0	N/A	N/A	575/3/60	13.62	-	1.9	TITAN AIR, GREENHECK, E.H. PRICE, BOUSQUET
AHU-1	AIR HANDLER UNIT	ENGINEERED AIR	LM-2-K	363	944	2,000	944	2,000	186.8	0.75	54.0	N/A	575/3/60	65.89	-	2.9	TITAN AIR, GREENHECK, E.H. PRICE, BOUSQUET
HRV-1	HEAT RECOVERY VENTILATOR	NU-AIRE	NU350	23	94	200	94	200	87.2	0.35	N/A	N/A	115/1/60	-	170	7	LENNOX, LIFE BREATH
F-1	FURNACE	CARRIER	59SC5A120S24-20	84	1,652	3,500	212	450	373.6	1.5	34.3	N/A	115/1/60	14.9	-	3	YORK, LENNOX
CU-1	CONDENSING UNIT	CARRIER	24ABB348A003	84	N/A	N/A	N/A	N/A	N/A	N/A	14.0	R410A	208/1/60	26.2	-	4	YORK, LENNOX
EDH-1	ELECTRIC DUCT HEATER	THERMOLEC	-	7	94	200	N/A	N/A	N/A	N/A	3.0	N/A	208/1/60	14.43	3000	5	NEPTRONIC
WH-1	WELDING FUME HOOD	PLYMOVENT	1.5m x 2.5m FLEXHOOD	91	826	1,750	N/A	N/A	N/A	N/A	N/A	N/A	N/A	N/A	N/A	6.8	
EH-1	PARTS CLEANING HOOD	PLYMOVENT	1.0m x 1.5m FLEXHOOD	54	330	700	N/A	N/A	N/A	N/A	N/A	N/A	N/A	N/A	N/A	6.8	

NOTES:
1. C/W VARIABLE FREQUENCY DRIVE.
2. C/W MIXING DAMPERS AND ELECTRIC HEATING COIL WITH SUPPLY AIR TEMPERATURE CONTROLLED SCR CONTROL AND AIR FLOW SENSOR.
3. C/W 4 TON CARRIER EVAPORATOR COIL MODEL CNPVP4824ALA OR ACCEPTED EQUIVALENT.
4. C/W WALL MOUNTING KIT.
5. C/W SUPPLY AIR TEMPERATURE CONTROLLED SCR CONTROL AND AIR FLOW SENSOR.
6. C/W 4 LEGGED STAND AND FLOOR PLATE.
7. C/W ENTHALPY EXCHANGER CORE. REFER TO SPECIFICATION.
8. C/W ORANGE/RED CURTAIN AND CURTAIN HOLDER AND LIGHT FIXTURE.
9. WEIGHT OF UNIT SHALL NOT EXCEED THE WEIGHT INDICATED UNLESS ACCEPTED IN WRITING BY THE STRUCTURAL ENGINEER.

DESIGNATION	PRODUCT MANUFACTURER	MODEL NO.	AIR VOLUME		STATIC PRESSURE		MOTOR				ELECTRICAL			OPERATING WEIGHT		NOTES	ACCEPTED EQUALS
			L/s	CFM	Pa	in WC	RPM	HP	DRIVE	STARTER	Watts	Amps	Volts-Phase-Hz	kg	lbs		
EF-1	GREENHECK	SE1-18-424-A7	2006	4,250	49.80	0.20	1,725	0.75	DIRECT	2 SPEED	-	-	115-1-60	42.6	94	1	LOREN COOK, CARNES, JENCO
EF-2	GREENHECK	SE1-18-424-A7	2006	4,250	49.80	0.20	1,725	0.75	DIRECT	2 SPEED	-	-	115-1-60	42.6	94	1	LOREN COOK, CARNES, JENCO
EF-3	PLYMOVENT	FUA-3000	826	1,750	124.50	0.50	3,450	1.5	DIRECT	SOFT	-	1.56	575-3-60	27.2	60	2	CARNES, TWIN CITY, DELHI
EF-4	GREENHECK	SQ-95-D	283	600	93.38	0.38	1,550	0.125	DIRECT	NONE	-	-	120-1-60	18.6	41		LOREN COOK, FANTECH, JENCO, PENN BARRY
EF-5	PENN BARRY	WFX12BH	330	700	281.37	1.13	1,199	0.5	BELT	NONE	-	-	115-1-60	52.2	115	3	LOREN COOK, FANTECH, JENCO, GREENHECK
EF-6	GREENHECK	SE1-14-432-A4	944	2,000	49.80	0.20	1,725	0.25	DIRECT	2 SPEED	-	-	115-1-60	35.4	78	1	LOREN COOK, CARNES, JENCO

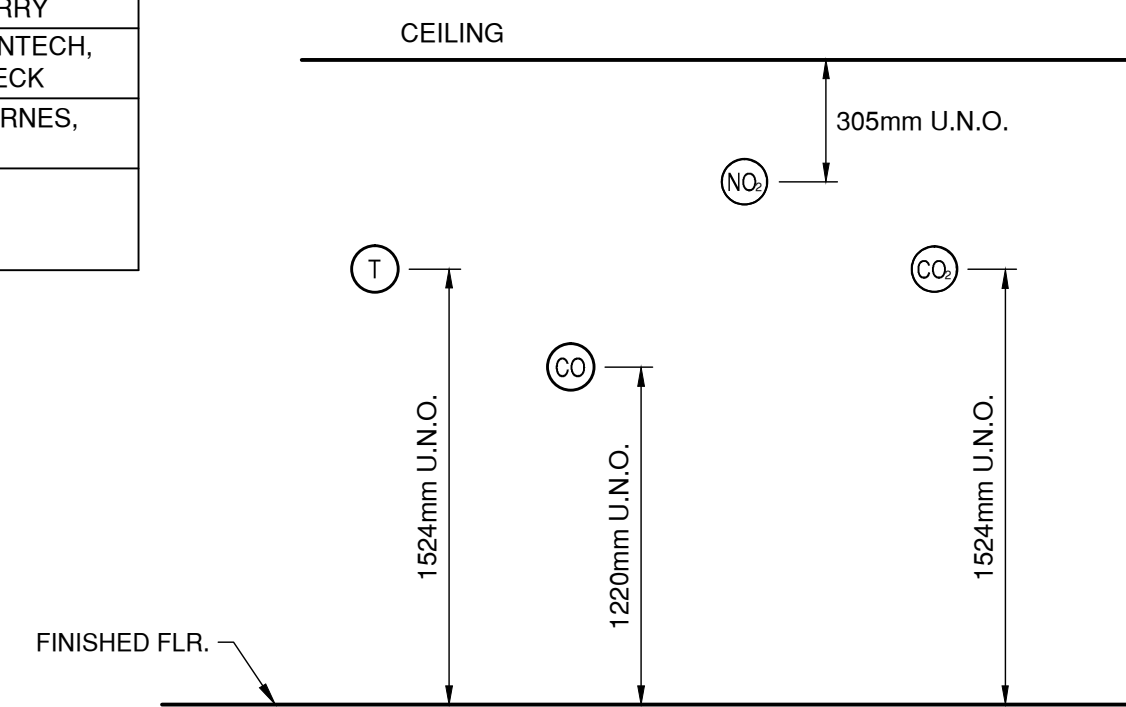
NOTES:
1. C/W MOTORIZED DAMPER, WEATHER HOOD, MOTOR SIDE GUARD, AND VARIABLE FREQUENCY DRIVE.
2. WELDING HOOD EXHAUST FAN SUPPLIED WITH WELDING HOOD BY WELDING HOOD SUPPLIER.
3. C/W 115 VOLT 1 PHASE EXPLOSION PROOF MOD, ALUMINUM BIRD SCREEN, EXPLOSION PROOF DISCONNECT AND THERMAL OVERLOAD PROTECTION.

DESIGNATION	PRODUCT MANUFACTURER	MODEL NO.	HEATING CAPACITY			POWER REQUIREMENTS				MAX. WEIGHT (kg)	NOTES	ACCEPTED EQUALS	
			FUEL	MAX. INPUT (MBH)	MIN. OUTPUT (MBH)	VOLTS	PHASE	FLA	Hz				
UH-001	WEATHER-RITE	UHAS-250	NAT. GAS	250	200	115	1	10.6	60	109	1, 2, 3	STERLING, REZTOR, LENNOX, MODINE	
UH-002	WEATHER-RITE	UHAS-125	NAT. GAS	125	100	115	1	5.8	60	74	1, 2, 3		
UH-003	WEATHER-RITE	UHAS-125	NAT. GAS	125	100	115	1	5.8	60	74	1, 2, 3		
UH-004	WEATHER-RITE	UHAS-125	NAT. GAS	125	100	115	1	5.8	60	71	1, 2, 3		
UH-005	WEATHER-RITE	UHAS-125	NAT. GAS	125	100	115	1	5.8	60	71	1, 2, 3		
UH-006	WEATHER-RITE	UHAS-125	NAT. GAS	125	100	115	1	5.8	60	71	1, 2, 3		
UH-007	WEATHER-RITE	UHAS-125	NAT. GAS	125	100	115	1	5.8	60	71	1, 2, 3		
UH-008	WEATHER-RITE	UHAS-200	NAT. GAS	200	156	115	1	10.6	60	84	1, 2, 3		
UH-009	EXISTING	EXISTING	NAT. GAS	115	92	120	1	6.0	60	64	4		N/A
UH-010	EXISTING	EXISTING	NAT. GAS	115	92	120	1	6.0	60	64	4		N/A

NOTES:
1. C/W STAINLESS STEEL HEAT EXCHANGER.
2. C/W CONCENTRIC VENTING KIT.
3. WEIGHT OF NEW UNIT SHALL NOT EXCEED THE WEIGHT INDICATED UNLESS ACCEPTED IN WRITING BY THE STRUCTURAL ENGINEER.
4. EXISTING UNIT HEATER TO REMAIN.

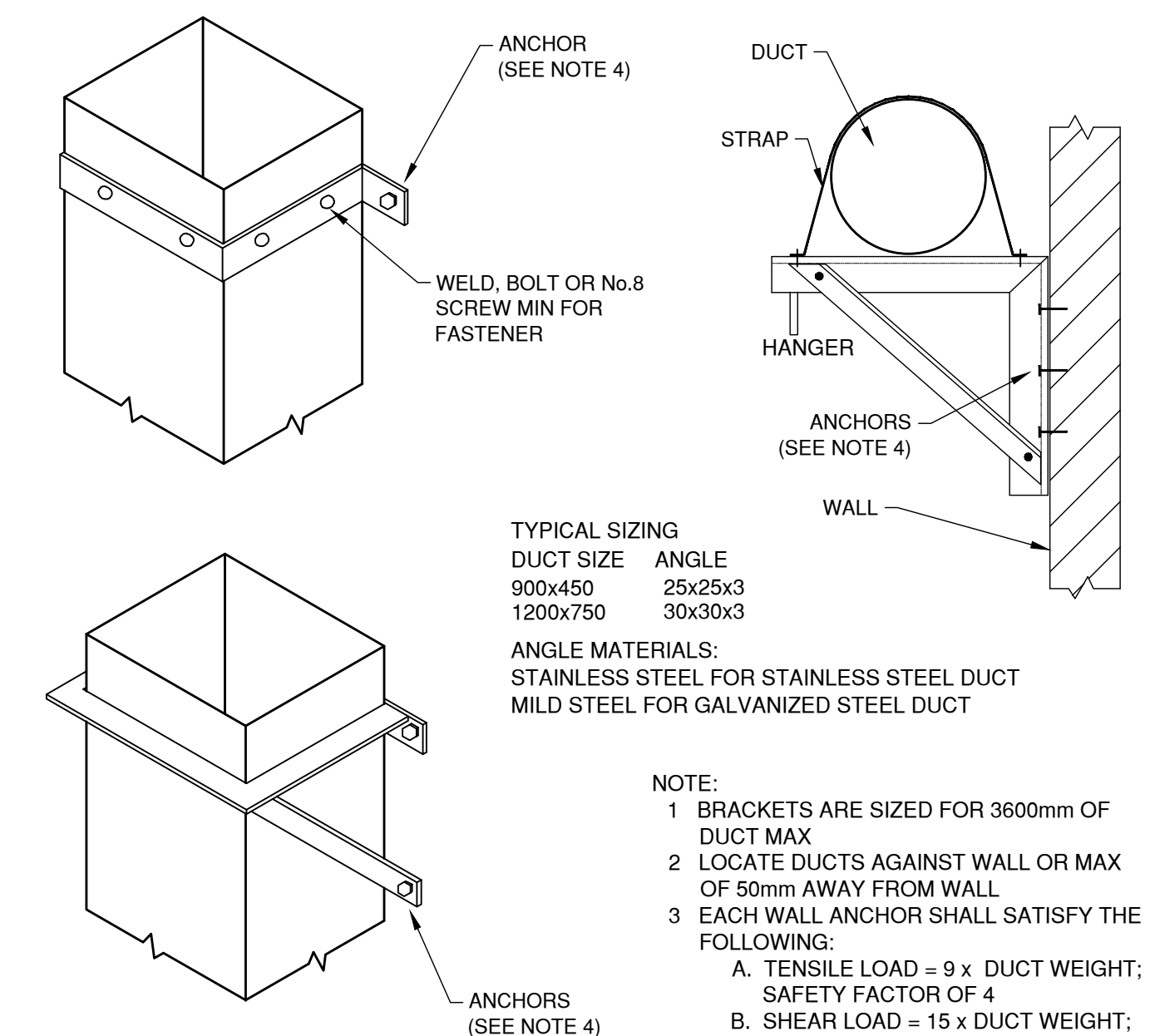
DESIGNATION	MODEL DESCRIPTION	ACCESSORIES	PRODUCT MANUFACTURER	PRODUCT ORDER INFORMATION	NOTES	ACCEPTED EQUALS
SG-1	STEEL DOUBLE DEFLECTION LOUVERED SUPPLY GRILLE	NONE	E.H.PRICE	520 / F / L / A / B12	1	
SG-2	STEEL SPIRAL DUCT GRILLE	DAMPER	E.H.PRICE	SDG / ST / A / B12	1	TUTLE & BAILEY, TITUS, NAILOR
RG-1	STEEL LOUVERED RETURN GRILLE	NONE	E.H.PRICE	530 / F / L / A / B12	1	
EG-1	STEEL LOUVERED RETURN GRILLE	SPIRAL DUCT FRAME	E.H.PRICE	530 / F / L / A / B12	1	
L-1	EXTRUDED ALUMINUM STATIONARY DRAINABLE LOUVER	NONE	E.H.PRICE	DE635	1	GREENHECK, ALUMAVENT

NOTES:
1. REFER TO DRAWING M-3 FOR SIZE AND AIR VOLUME.



3 SENSOR MOUNTING HEIGHT DETAIL

SCALE: N.T.S.



5 DUCT SUPPORTS FROM WALL DETAIL

SCALE: N.T.S.

EXISTING SITE CONDITION
THE ASSESSMENT AND ANY POTENTIAL REQUIRED UPGRADING OF THE EXISTING ROOF FRAME STRUCTURE OF THIS BUILDING HAS NOT BEEN INCLUDED IN THE SCOPE OF THIS PROJECT AS HAS BEEN DIRECTED BY THE CLIENT - THE CITY OF WINNIPEG. THE CONTRACTORS SHALL NOT ADD ANY LOAD TO THE EXISTING ROOF STRUCTURE FOR ANY REASON BEYOND SPECIFIED IN THE PROJECT PLANS AND SPECIFICATIONS WITHOUT APPROPRIATE REVIEW AND APPROVAL OF A PROFESSIONAL ENGINEER.

ASBESTOS CONTAINING MATERIALS ARE PRESENT ON-SITE.
REFER TO PROJECT SPECIFICATIONS.
ANY SUSPECT ASBESTOS-CONTAINING MATERIALS SHALL BE CONSIDERED AS ASBESTOS-CONTAINING UNTIL DETERMINED OTHERWISE.

FOR PRICING ONLY
NOT FOR CONSTRUCTION

 10 PRAIRIE WAY WINNIPEG, MANITOBA R2J 3J8 PH: (204)-233-2113 FAX: (204)-233-2000	DESIGNED BY: D.P.M. CHECKED BY: M.K. DRAWN BY: H.L. APPROVED BY: E.G.	ENGINEERS SEAL THE CITY OF WINNIPEG WATER AND WASTE DEPARTMENT HVC AND ELECTRICAL UPGRADE 552 PLINGUET STREET WASTEWATER SERVICES GARAGE AND ADJACENT BUILDINGS	CITY DRAWING NO. SHEET 6 OF 10 M-4
	0 ISSUED FOR PRICING 2012/06/22 E.G. B ISSUED FOR FINAL REVIEW 2012/06/16 E.G. A ISSUED FOR CLIENT REVIEW 2012/07/24 E.G.		
NO. REVISIONS DATE BY	DATE 2012/06/26	CONSULTANT DRAWING NO. 121-19259-00	DETAILS AND EQUIPMENT SCHEDULES