

# **APPENDIX O**

## **WonderWare System Information**

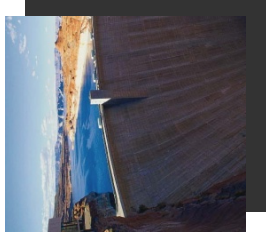


# Vertical Focus and Future Direction within Water waste water market

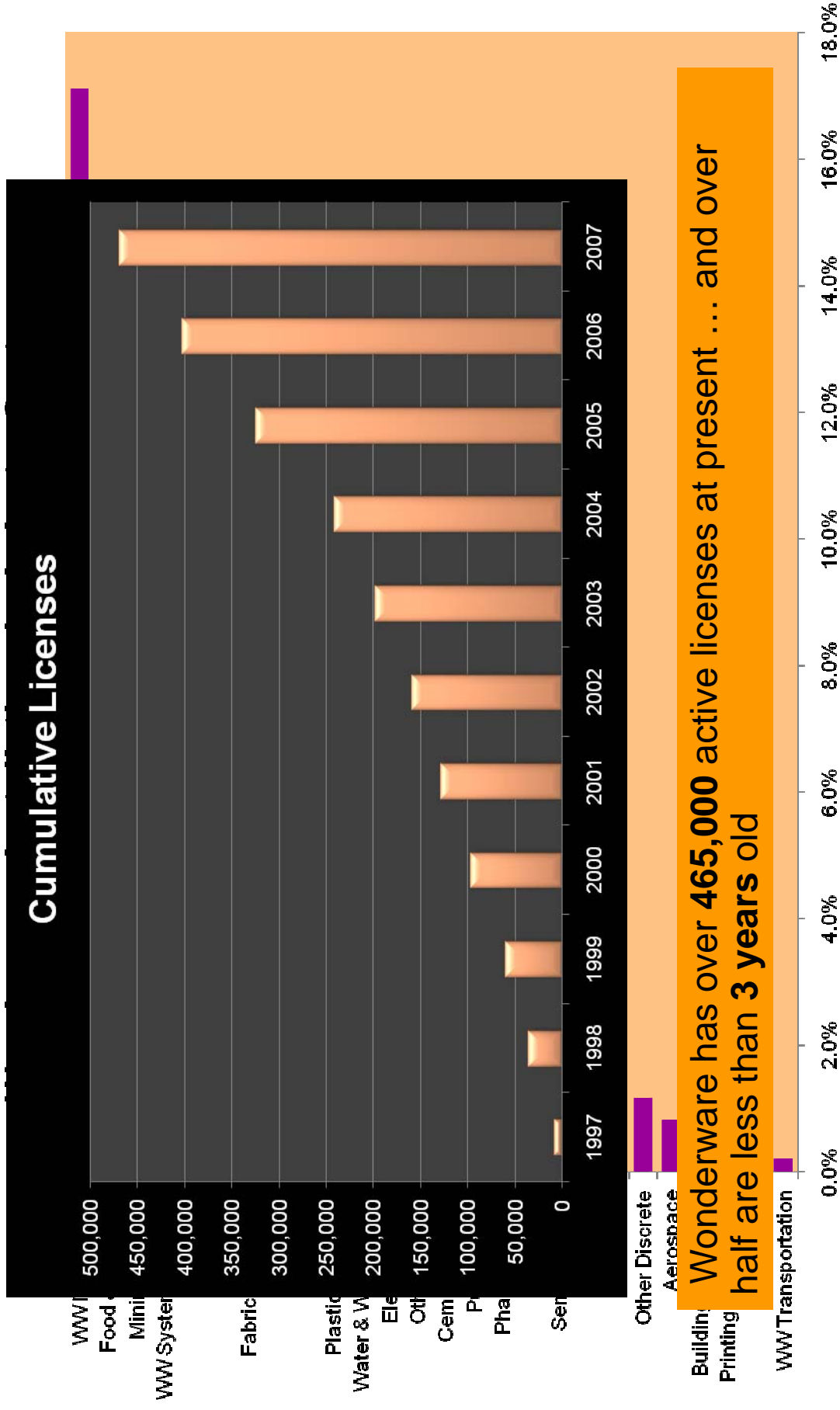
---



**Rashesh Mody**  
VP – HMI/SCADA Business  
Wonderware



# Wonderware Software is Installed Across Broad Horizontal Markets



# Product offering today..

System Inter-operability

Production & Manufacturing Activities

Information/Plant Visibility

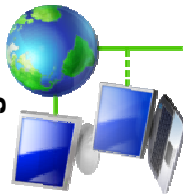
ERP  
(SAP, Oracle, Microsoft..)



Database Applications



Asset Management



LIM Systems



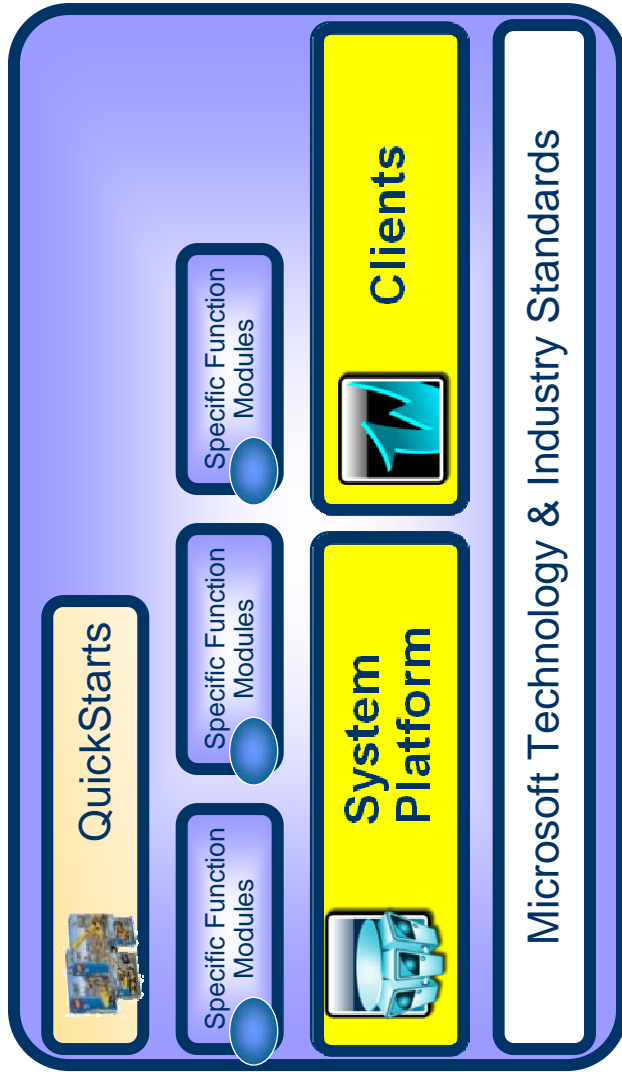
Devices



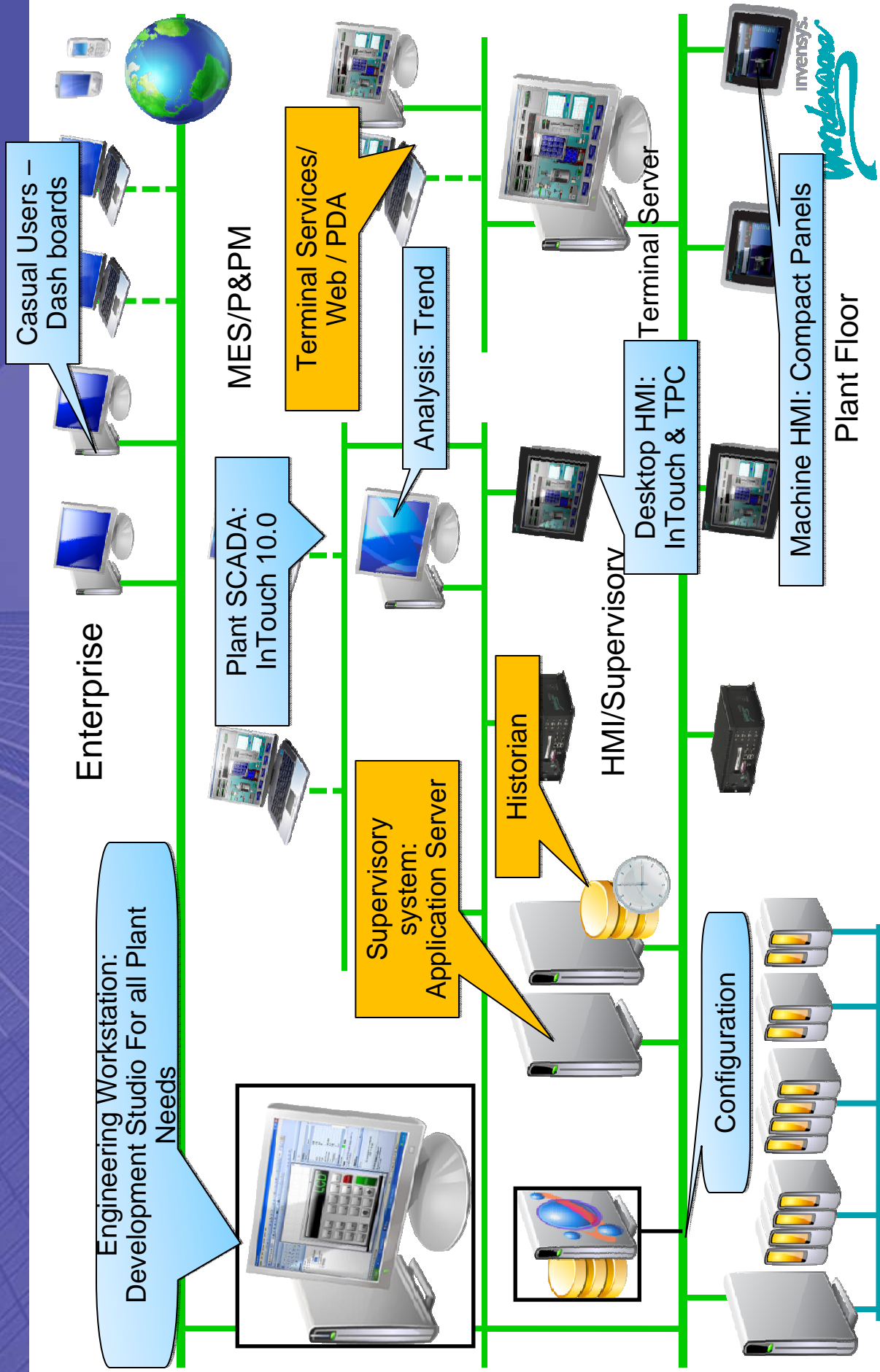
Device, Application, Enterprise Integration



Empowering All Roles in the Plant

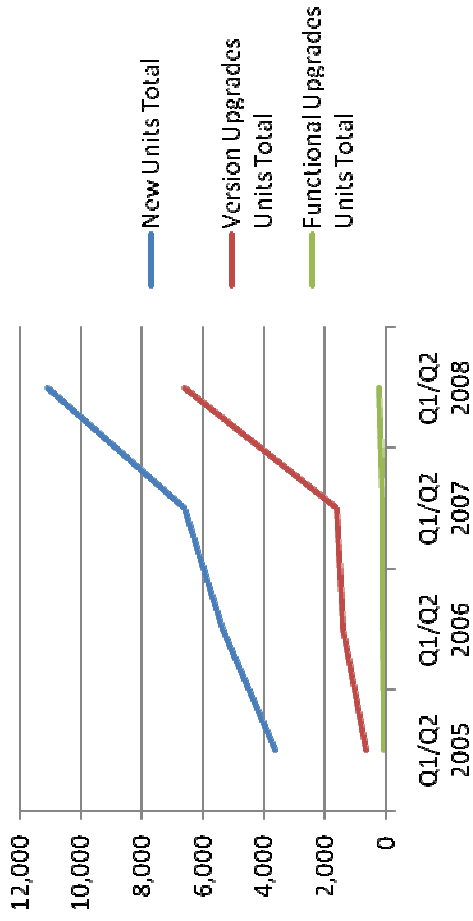


# Products deployment at sites

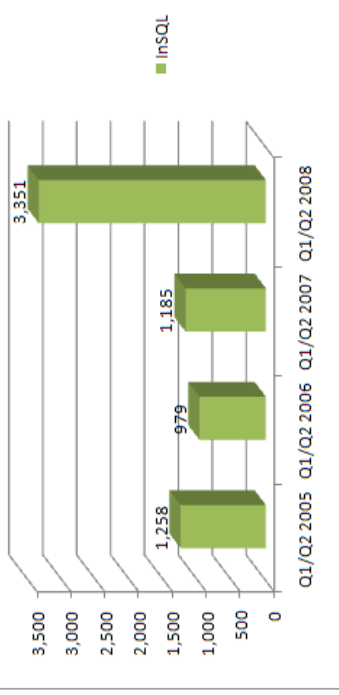


# System Platform by numbers..

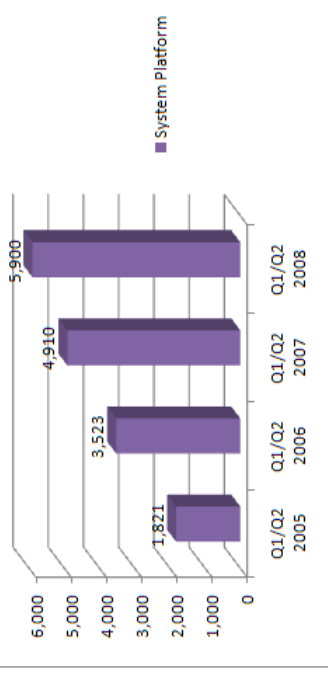
**System Platform -- IAS, InSQL & WIS  
by Units (1<sup>st</sup> Half)**



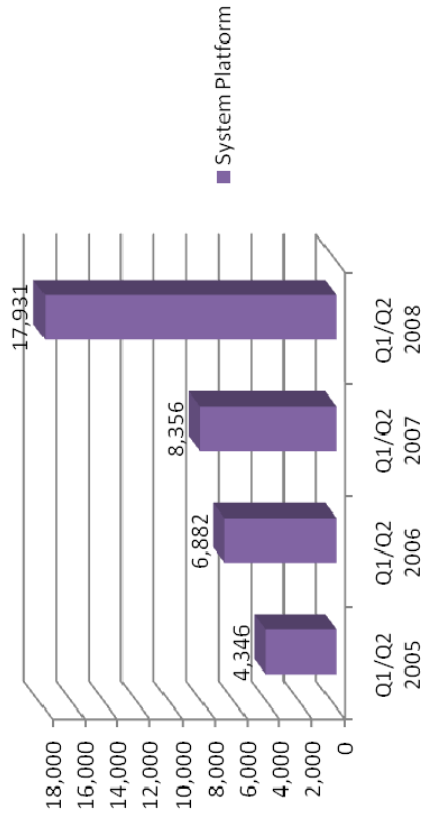
**Historian**



**Application Server**

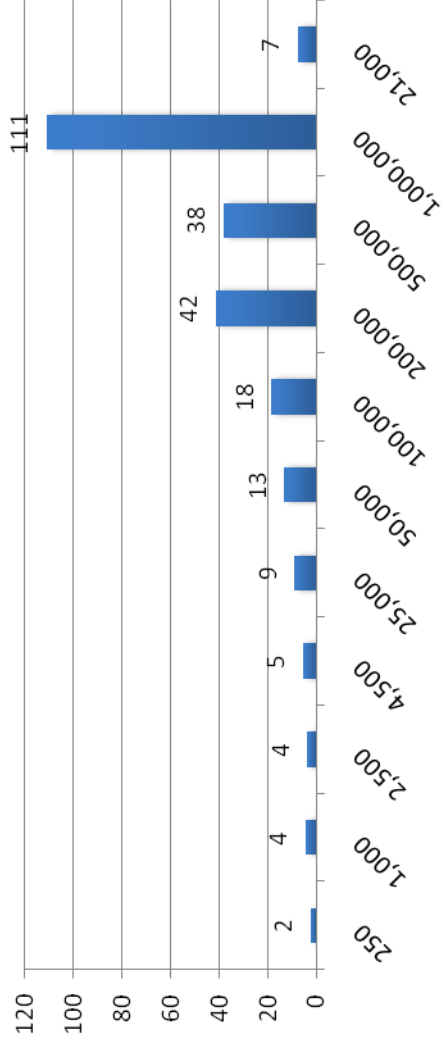


**System Platform -- IAS, WIS & InSQL**



# App Server System by numbers

**Average Number of Platforms (Computers)  
Per System Size**



## Key vertical focus: WW Strength

30% of our  
business is  
SCADA related



# The Challenges:

- Geographically dispersed systems
- Unmanned sites
- Software development
- Travel costs
- Application management
- Multiple users

## MANAGEMENT

- Continuous growth
- Large amount of devices, IC and data

## SCALABILITY

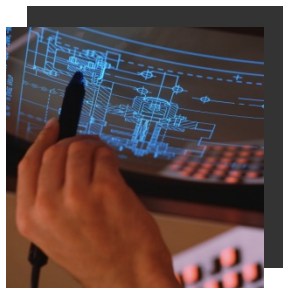
- Legacy systems
- Technology from multiple vendors
- 3<sup>rd</sup> party applications
- Multiple communication technologies

## INTEGRATION

- 24x7 operation requirements
- Emergency response requirements
- **Asse** performance

## AVAILABILITY

## TECHNICAL



# The Challenges:

**AGING AND FAILING INFRASTRUCTURE**

**REGULATORY REQUIREMENTS**

**WORK FORCE ISSUES**

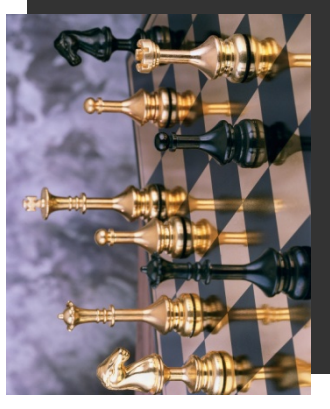
**SECURITY**

**INTEGRATION TO OTHER SYSTEMS**

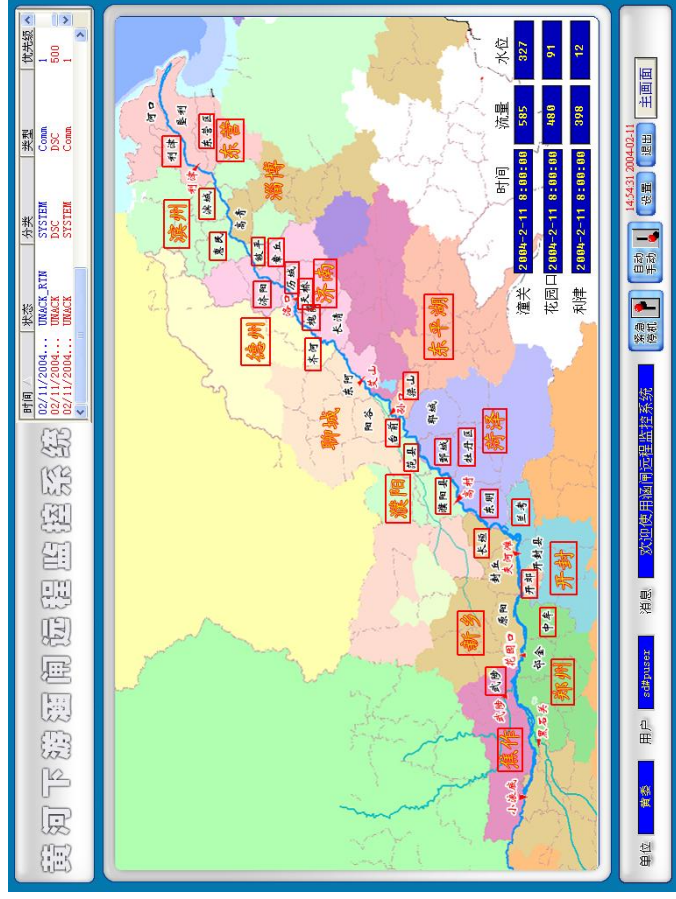
**INTERACTION WITH OTHER ORGANIZATIONS**

**RESTRUCTURING**  
(REGULATION/ DEREGULATION, MERGERS, ACQUISITIONS)

**BUSINESS**



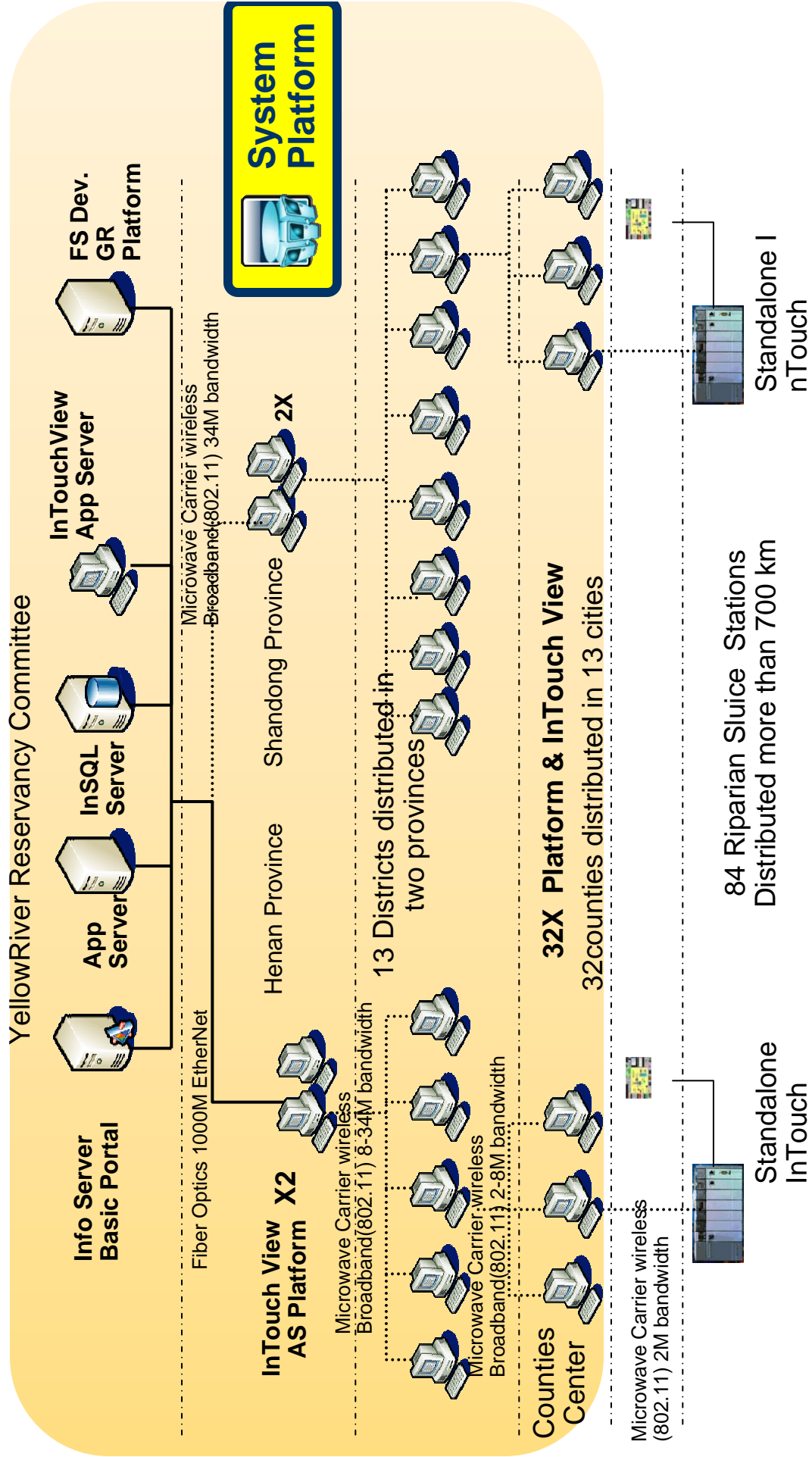
# China: Yellow River



## ■ Application:

- Regulate water flow of entire river
- Water treatment

# Application Architecture



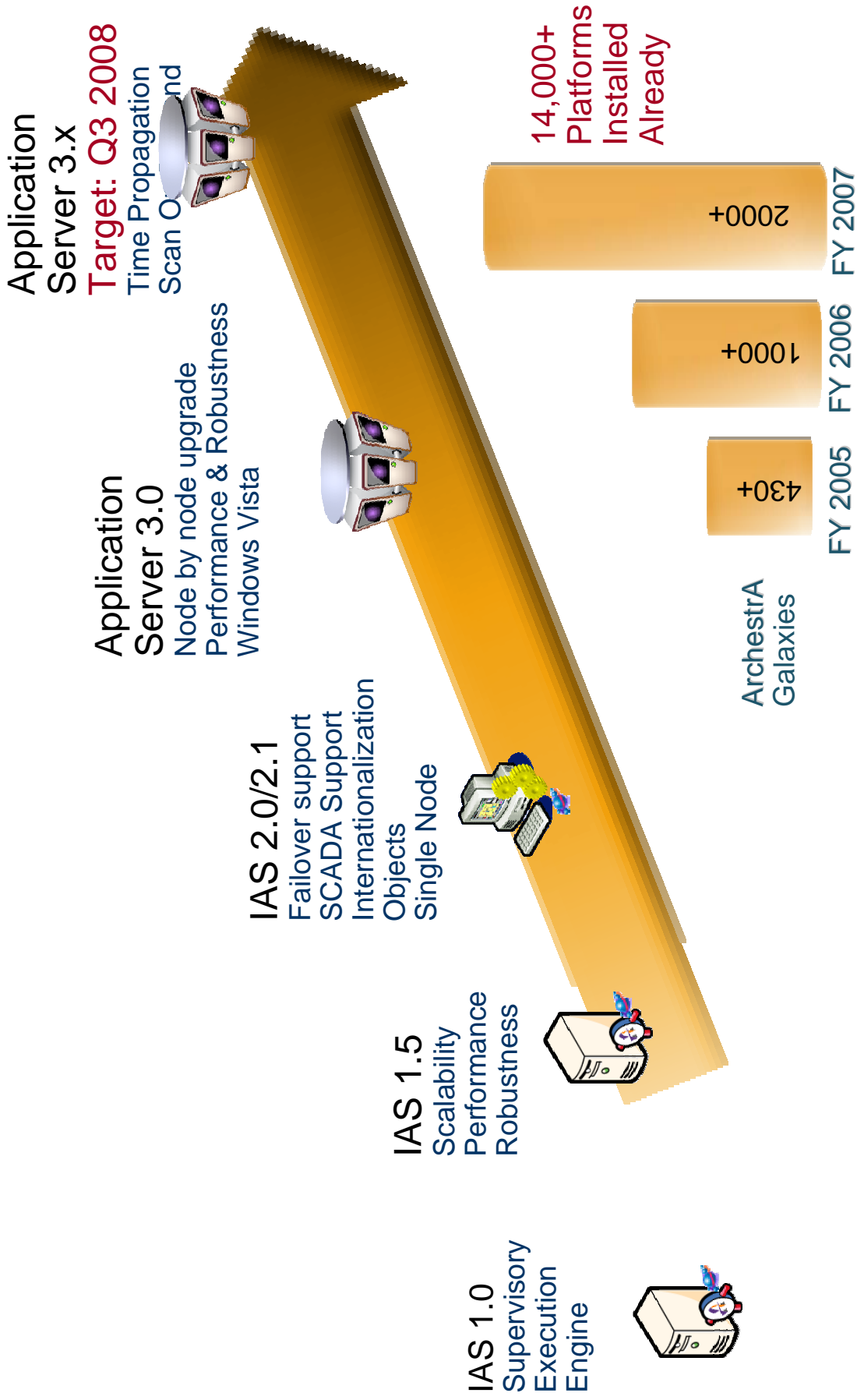
# Key features for GeoSCADA

- ▶ Distributed and can be centrally managed
- ▶ Ease of use and easy to implement
- ▶ Simplified maintenance & easy to engineer
  - Flexibility and Changeability
- ▶ Unparallel scalability & security
- ▶ Low cost of ownership
- ▶ Visualization
- ▶ Data collection, analysis, reporting
- ▶ Connectivity, Extensibility
- ▶ 3<sup>rd</sup> party solution providers

# High-level Plan – HMI/SCADA

- ▶ **Development: Enhance System Platform,**
  - International requirements,
  - Geo SCADA needs
- ▶ **Business Unit – Geo-SCADA, Vertical Market tools**
  - Water waste Water tool box: Objects, graphics, drivers, reports, partnership etc.
- ▶ **Industrial Computer – Low end HMI (V2) CE based**

# Application Server Evolution

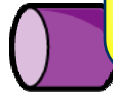


# High Performance Historian Evolution

## Wonderware Historian

The world's most accepted industrial plant data historian... over 20,000 Licenses

**InSQL 3.0**  
Cost-effective Historian



MS SQL Server  
6.0

**InSQL 7.0**  
Integrated w/ InTouch



SQL  
6.5

**InSQL 8.0**  
Distributed,  
**Integrated**  
w/ IAS



SQL  
2000

**InSQL 9.0**  
Intelligent processing of Discrete data,  
WAN support,  
Compression



SQL2000/  
SQL 2005

**InSQL 9.x**

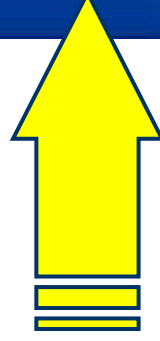
Multi-tier Historian

Target: Q3 2000



SQL 2005,8  
(next)..

- High Performance Historian
- Streaming Real-time Data
- Integrated Production Data
- Off-line Data (Manual, Late)
- Data transformation
  - Ahead or after storage
  - Calculation
- Auto Configuration
- Rich Clients
- Extensibility – Toolkit, SQL

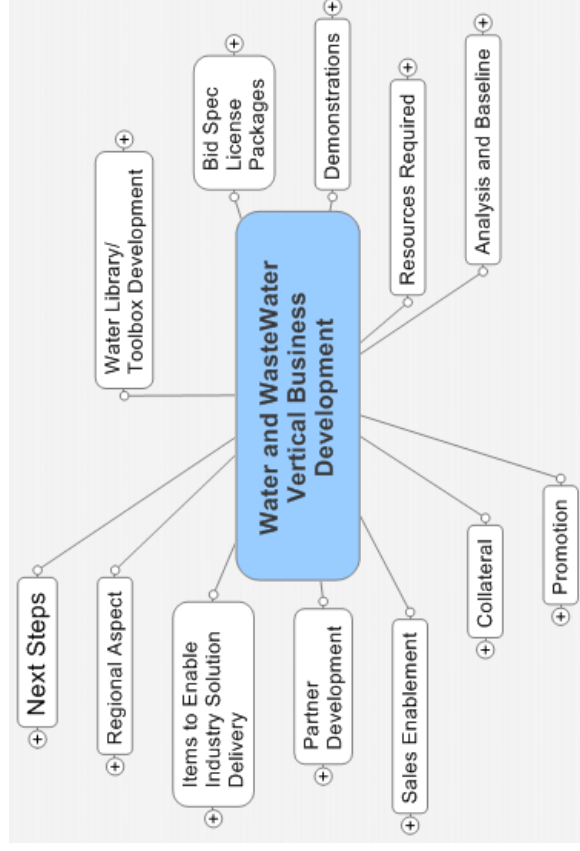




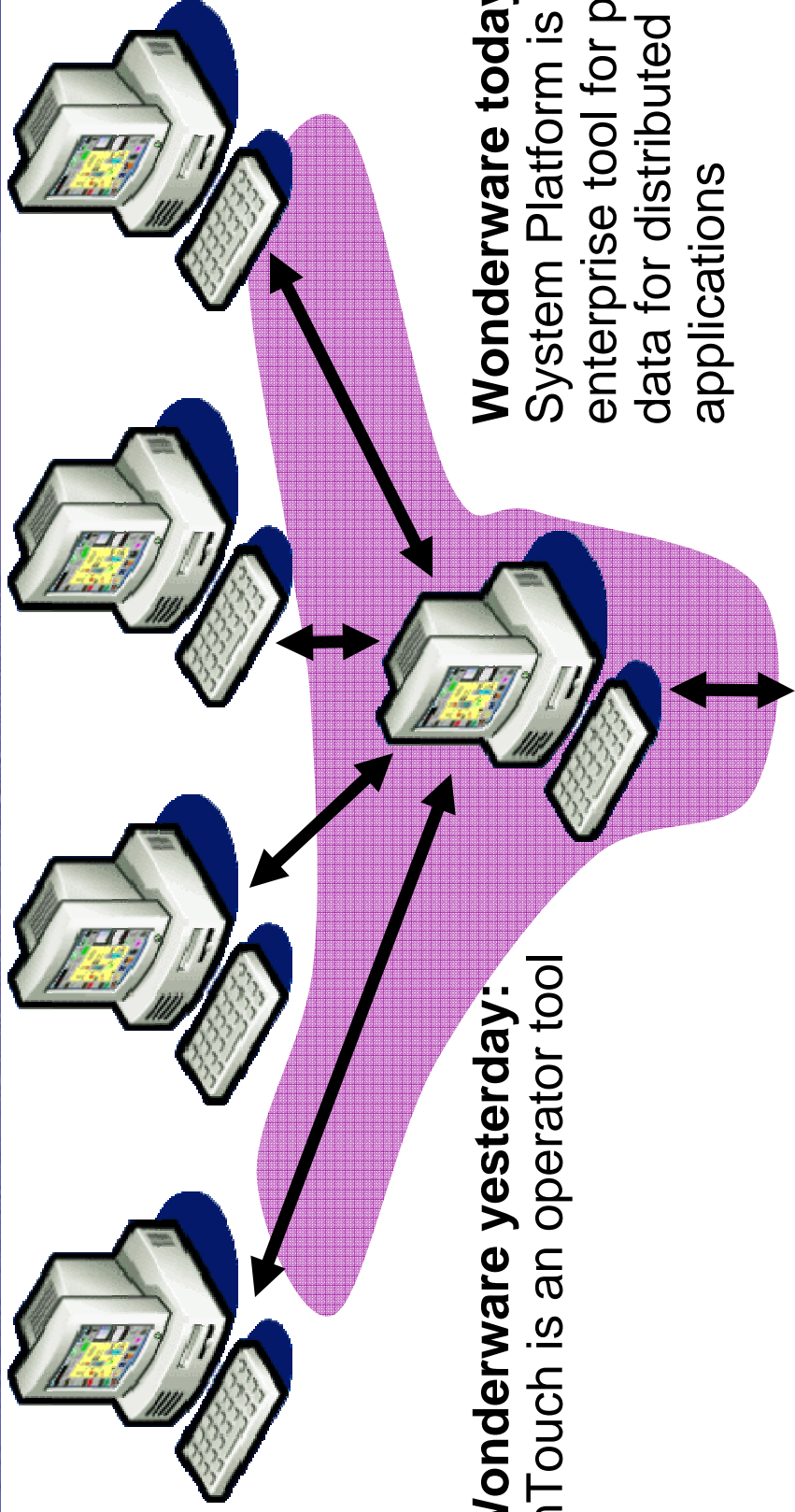
# Industry Pack: Water/Waste water: Vertical Initiative

► **Goal: Wonderware will be the World-wide Leader in Water & Waste Water Operations Management Software**

- Domain objects
- Reports
- Graphics
- Drivers
- Pre-canned Galaxy
- Hardware etc.

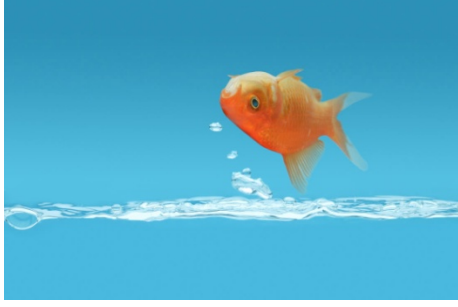


Wonderware everywhere – users of Wonderware information across the organization



**Wonderware yesterday:**  
InTouch is an operator tool

**Wonderware today:**  
System Platform is an enterprise tool for process data for distributed & large applications



**Powering intelligent plant  
decisions in real time.**

