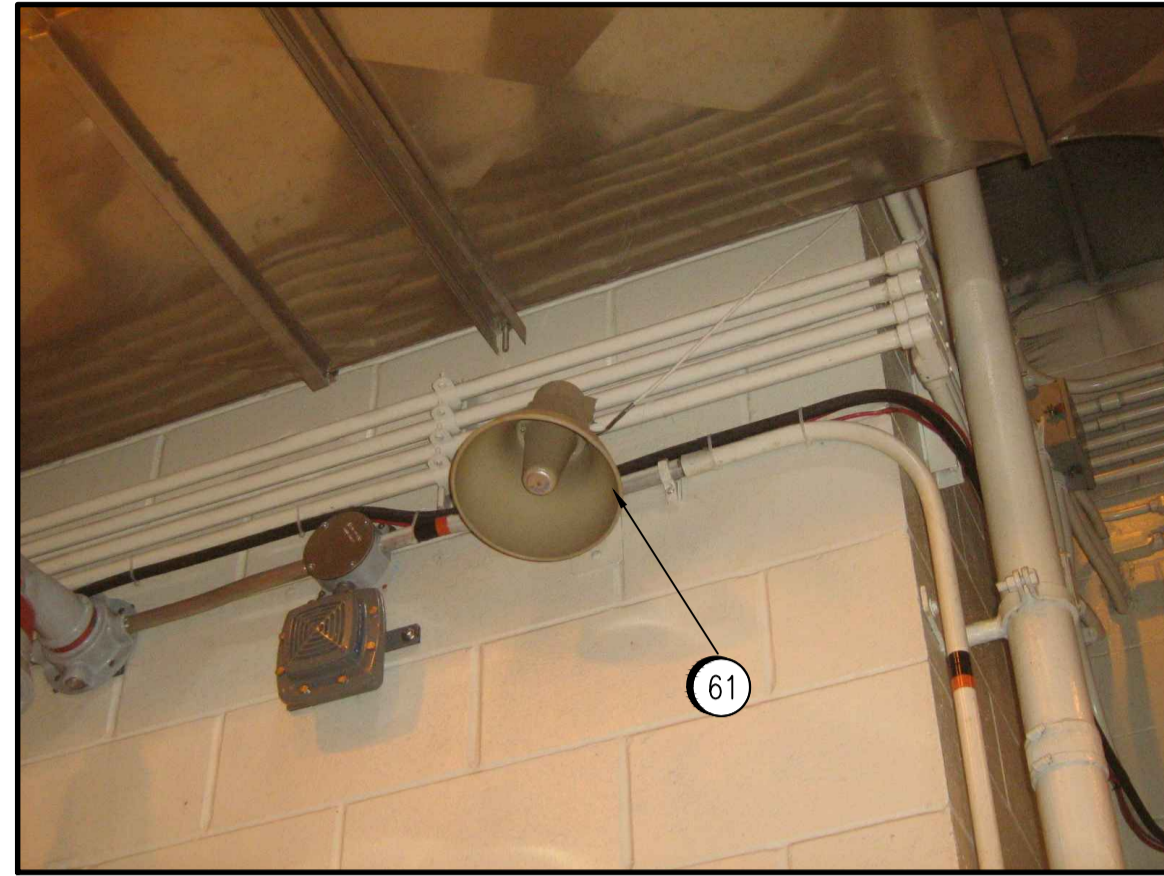


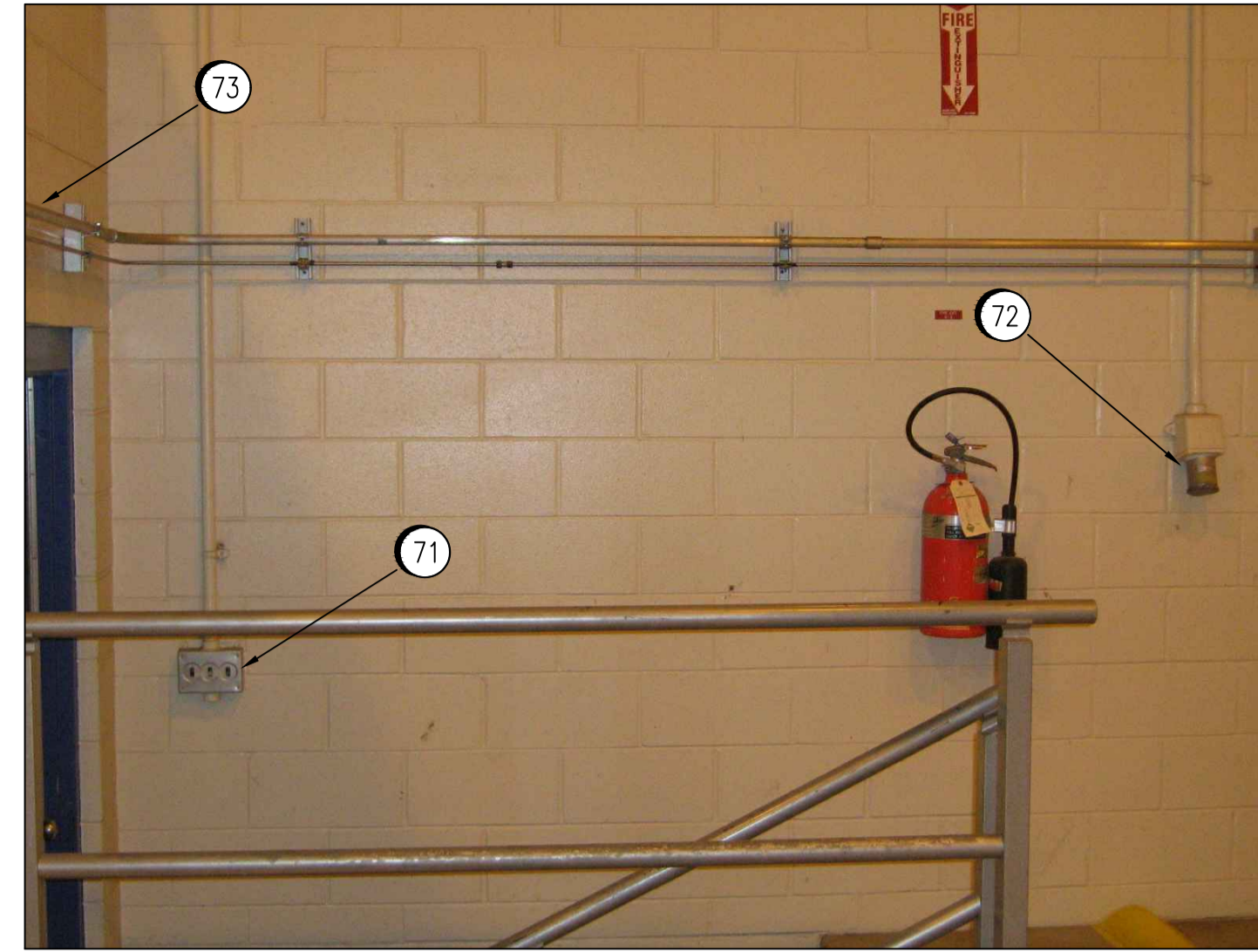
5 DETAIL
SCALE NTS

- 51 REPLACE EXISTING STROBE (G260-XA) AND BUZZER (G260-XJ). SEE DRAWING SEP-2070 AND 1-0102G-E0035 FOR WIRING DETAILS.
- 52 REPLACE EXISTING CONVEYOR SAFETY PULL-CORD SWITCHES (G260-ES1, G260-ES2), INSTALL SAFETY RELAY IN MCC BUCKET IN MCC-3G AND WIRE SWITCHES TO SAFETY RELAY. SEE DRAWING 1-0102G-E0035 FOR WIRING DETAILS.
- 53 REPLACE EXISTING LOCK-OFF-STOP STATION AND BACK BOX (G688-HS-1). SEE DRAWING SEP-2126 FOR WIRING DETAILS. INSTALL WARNING LAMACOID NEXT TO E-STOP.
- 54 REPLACE ALL FLEXIBLE CONDUIT WITH RIGID CONDUIT.



6 DETAIL
SCALE NTS

- 61 REPLACE EXISTING SPEAKER AND INSTALL CONDUIT WITH HAZARDOUS RATED SEAL AT HAZARDOUS BOUNDARY. INSTALL CABLE FULLY IN CONDUIT.



7 DETAIL
SCALE NTS

- 71 REPLACE EXISTING 15A, 347V LIGHT SWITCHES AND BACK BOX. INSTALL EYS SEAL IN EXISTING CONDUIT AND WIRING RUN.
- 72 REPLACE EXISTING 60A, 3-POLE WELDING RECEPTACLE AND BOX. INSTALL EYS SEAL IN EXISTING CONDUIT AND WIRING RUN.
- 73 PROVIDE EXIT FIXTURE ABOVE DOOR. RUN CONDUIT FROM EXISTING EXIT LIGHT OVER VIEWING GALLERY DOOR IN HALLWAY.

1-0102A-E0010	TYPICAL INSTALLATION DETAILS
1-0102A-E0009	DEVICE AND LUMINARIE SCHEDULE
1-0102G-E0014	ELECTRICAL CLASSIFICATION PLAN
DRAWING NUMBER	REFERENCE DRAWINGS

APECM
Certificate of Authorization
SNC-Lavalin Inc.
No. 4489

NO.	REVISIONS	DATE	DESIGN	CHECK
00	ISSUED FOR TENDER, BID OPP. 7-2012	2012/02/08	TMC	CJR

SNC-LAVALIN
SNC-LAVALIN INC.
148 Nature Park Way
Winnipeg, MB, Canada R3P 0X7
204-786-8080

DESIGNED BY: T. CHURCH	CHECKED BY: C. REIMER
DRAWN BY: S. FUNK	APPROVED BY: C. REIMER
SCALE: NTS	RELEASED FOR CONSTRUCTION BY: N. HARRINGTON
DATE: 2011/07/06	DATE: 2012/02/15
CONSULTANT NO.: 112577-0113-47DD-0203	

ENGINEER'S SEAL
ORIGINAL DRAWING
SEALED BY:
T. M. CHURCH
SNC-LAVALIN
MEMBER #32682
2012/02/15
REV. 00

THE CITY OF WINNIPEG
WATER AND WASTE DEPARTMENT

SOUTH END WATER POLLUTION CONTROL CENTRE
ELECTRICAL CLASSIFICATION UPGRADES
PLAN LAYOUT
PUMP & SCREEN BUILDING - SCREEN ROOM G127
WEST AREA

CITY DRAWING NUMBER	SHEET	REV.	SIZE
1-0102G-E0020	002	00	A1