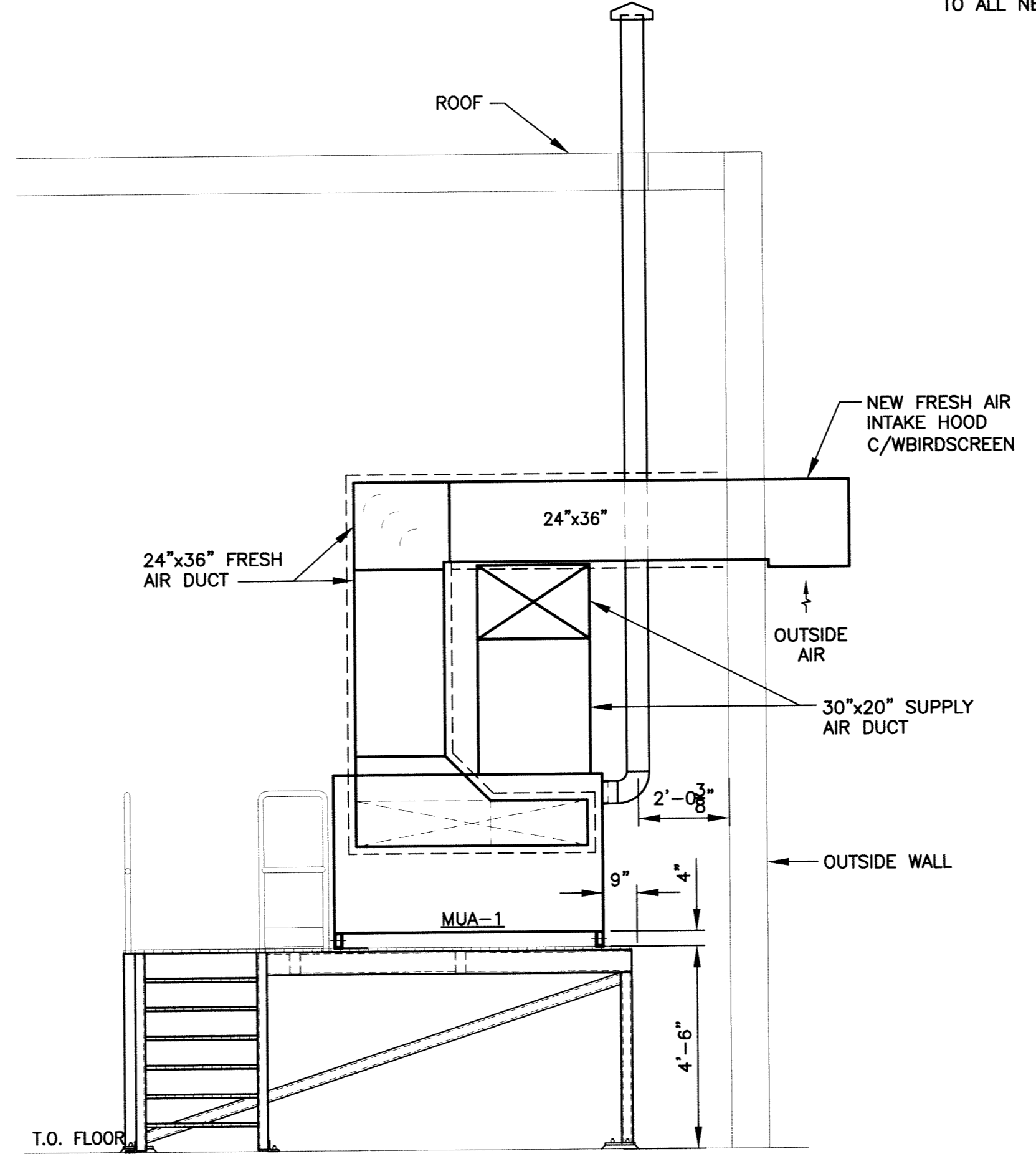


**1** NORTH SHOP - SECTION  
M02 SCALE: N.T.S.



**2** NORTH SHOP - SECTION  
M02 SCALE: N.T.S.

- GENERAL NOTES:**
- PERFORM WORK IN ACCORDANCE WITH ALL APPLICABLE CODES AND REGULATIONS.
  - REVIEW EQUIPMENT LOCATIONS WITH THE CITY PRIOR TO INSTALLATION.
  - EQUIPMENT LOCATIONS, DUCT AND PIPE ROUTING INDICATED ON THE DRAWINGS IS APPROXIMATE ONLY. CONFIRM IN THE FIELD. THE CONTRACTOR IS RESPONSIBLE FOR VERIFYING ALL DIMENSIONS IN THE FIELD PRIOR TO ORDERING EQUIPMENT AND COMMENCING INSTALLATION WITHOUT EXTRA CHARGES TO THE PROJECT. THE CONTRACTOR IS RESPONSIBLE TO ENSURE ALL EQUIPMENT, DUCTWORK AND PIPING FITS IN THE SPACE AVAILABLE AND TO MAINTAIN THE GENERAL DESIGN INTENT FOR THE SYSTEMS.
  - CONFIRM TO SMACNA STANDARDS FOR SUPPLY AND INSTALLATION OF DUCTWORK. SEAL ALL DUCT JOINTS.
  - WALL PENETRATIONS BY STRUCTURAL, COORDINATE LOCATIONS. ASBESTOS IS LOCATED IN CORE OF BLOCK WALL. COORDINATE WORK WITH ASBESTOS REMEDIATION CONTRACTOR RETAINED BY CITY OF WINNIPEG. SEAL ALL PENETRATIONS THROUGH WALLS AIR AND WATER TIGHT. GRILLE LOCATIONS ARE APPROXIMATE ONLY.
  - CONTRACTOR TO SIZE AND PROVIDE NEW GAS PIPING TO ALL NEW HEATING EQUIPMENT. PAINT PIPING YELLOW.

**NOTES:**

THESE DRAWINGS SHALL NOT BE SCALED.

THE CONTRACTOR SHALL VISIT THE SITE AND SATISFY ONESELF ALL DIMENSIONS, DATUM, AND DETAILED INFORMATION SHOWN ARE CORRECT.

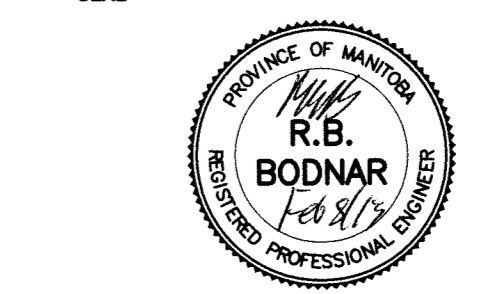
THE CONTRACTOR IS TO REVIEW AND COORDINATE ALL MECHANICAL, ELECTRICAL AND STRUCTURAL DRAWINGS FOR ADDITIONAL OPENINGS THROUGH FLOORS, WALLS, AND CEILINGS FOR DUCT, PIPE & ELECTRICAL RISERS AND ALL OPENINGS NOT SHOWN ON DRAWINGS.

ALL PRODUCTS AND MATERIALS TO BE USED AND INSTALLED SHALL CONFORM WITH MANUFACTURER'S SPECIFICATIONS & APPLICABLE CODES.

THE CONTRACTOR SHALL BE RESPONSIBLE TO PATCH AND MAKE GOOD ALL EXISTING CONSTRUCTION AFFECTED BY THE REMOVAL OF ALL ITEMS FORMING THE PART OF THE RENOVATION WORK.

DRAWING LIST	
SHEET No:	SHEET TITLE
M01	NORTH SHOP - EXISTING HVAC DEMOLITION PLAN
M02	NORTH SHOP - NEW HVAC RENOVATION PLAN
M03	NORTH SHOP - SECTION & DETAILS
M04	MECHANICAL CONTROLS SCHEMATIC
M05	MECHANICAL SPECIFICATIONS

No.	REVISION/DESCRIPTION	BY	DATE
1	ISSUED FOR CONSTRUCTION	RBB	2013/02/08
0	ISSUED FOR TENDER	RBB	2012/07/17



DRAWN	CHECKED	DESIGNED	APPROVED
RLR	RLG	RLG	RBB
DATE: 2012.04.16	USER APPROVAL		

THE CITY OF WINNIPEG  
PLANNING, PROPERTY AND DEVELOPMENT DEPARTMENT  
MUNICIPAL ACCOMMODATIONS DIVISION  
3-65 GARRY STREET, R3C 4K4

PROJECT  
NORTH SHOP 2170 MAIN STREET  
HVAC UPGRADE

SHEET TITLE  
MECHANICAL SECTIONS & DETAILS

SCALE	PROJECT No:	SHEET No:
AS SHOWN	12-0107-003	M03

