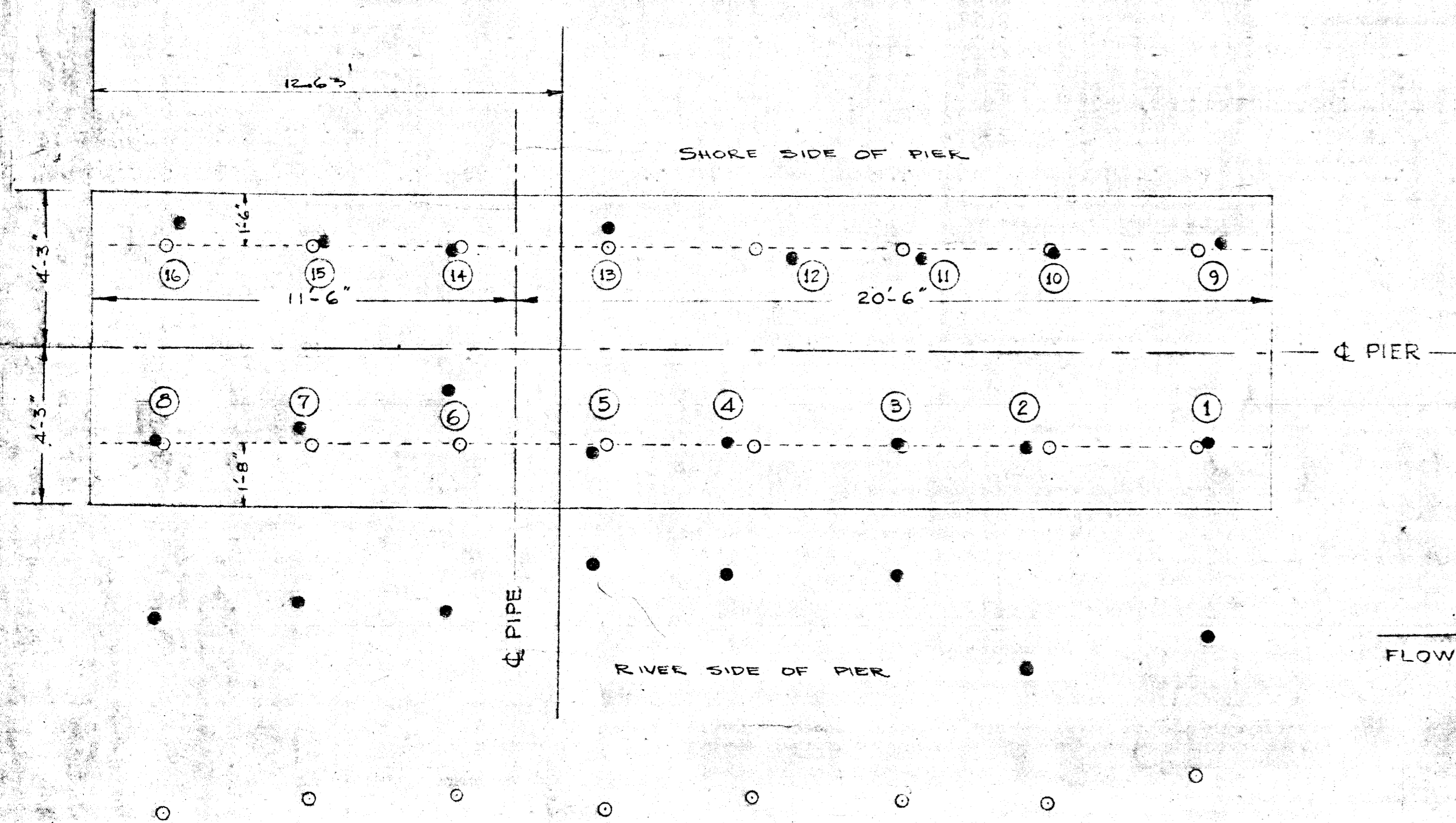
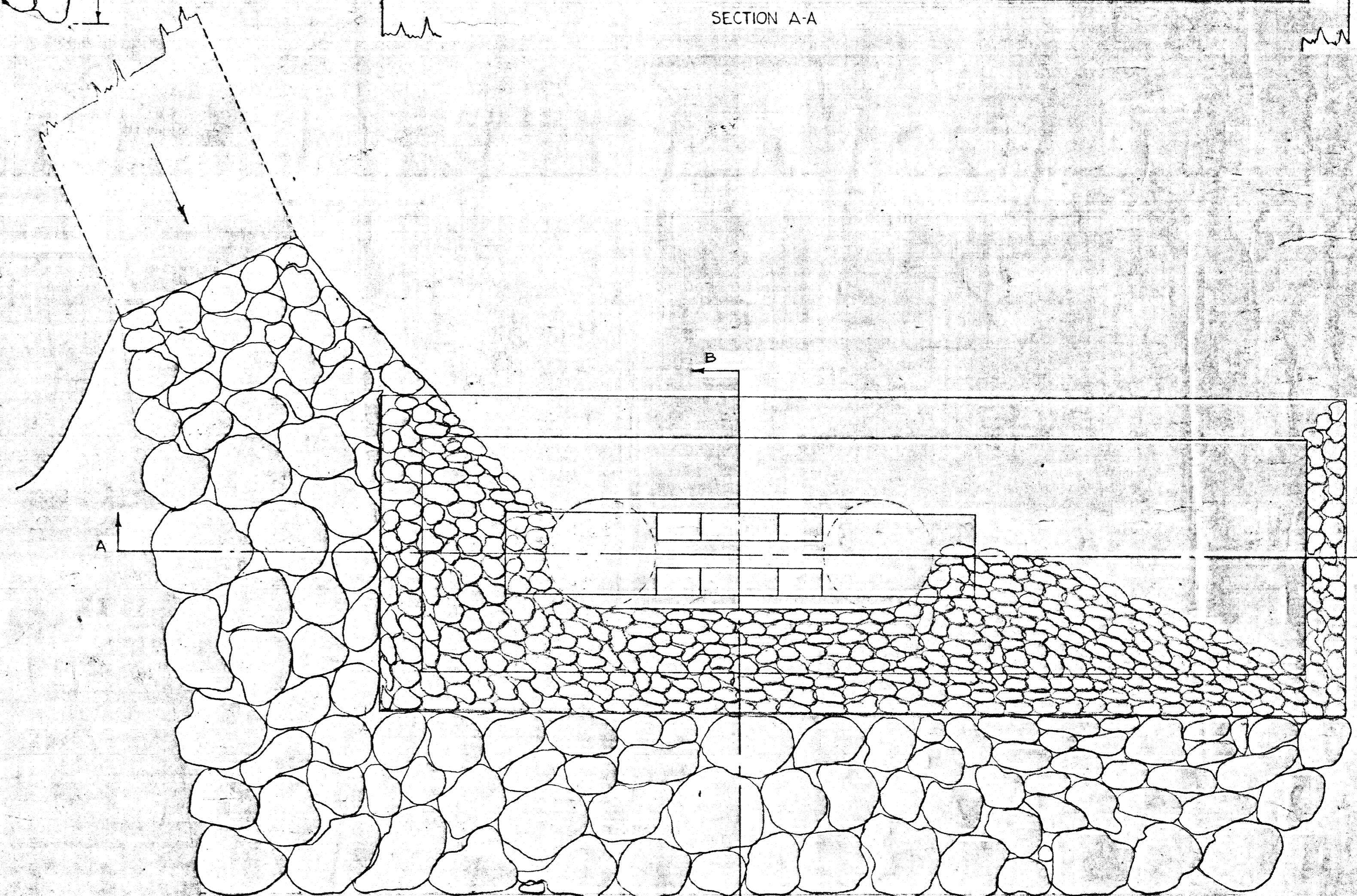
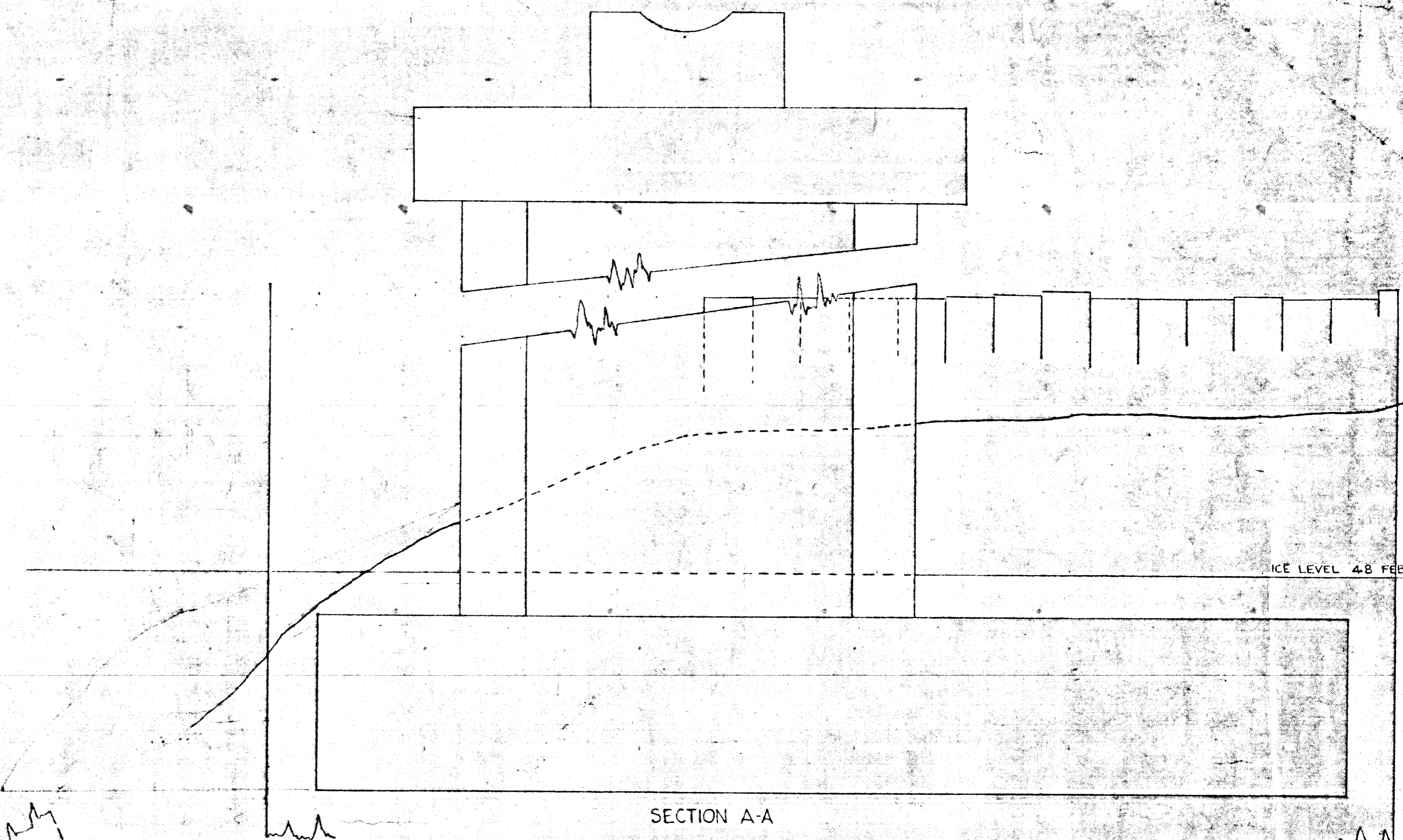
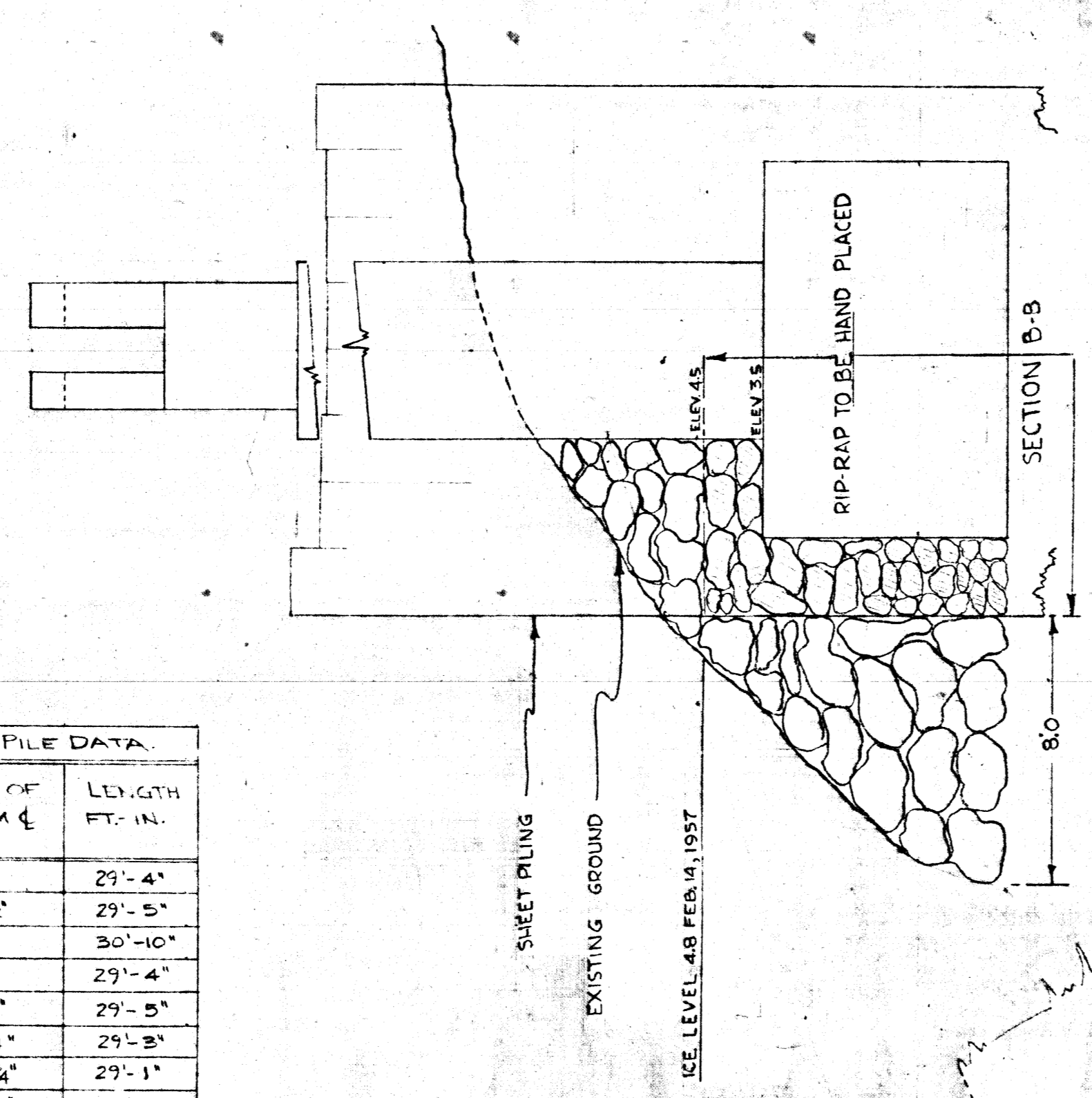


AS-BUILT BATTER PILE DATA - PIER SU2				AS-BUILT VERTICAL PILE DATA		
PILE NUMBER	DISTANCE OF BASE FROM ϕ FT.-IN.	LENGTH FT.-IN.	BATTER VERTICAL:HORIZONTAL	PILE NUMBER	DISTANCE OF PILE FROM ϕ FT.-IN.	LENGTH FT.-IN.
1	7'-8 1/2"	27'-4"	5.05:1	9	3'-0"	29'-4"
2	8'-7 1/2"	29'-7"	4.8:1	10	2'-8 1/2"	29'-5"
3	6'-1 1/2"	29'-11"	5:1	11	2'-6"	30'-10"
4	6'-1 1/4"	28'-11"	5:1	12	2'-6"	29'-4"
5	5'-10 1/2"	30'-0"	9.6:1	13	3'-3 1/2"	29'-5"
6	7'-1 1/2"	29'-4"	4.8:1	14	2'-8 1/2"	29'-3"
7	6'-11"	29'-0"	6:1	15	2'-10 3/4"	29'-1"
8	7'-4 1/2"	30'-2"	6.2:1	16	3'-5 1/4"	29'-0"



PLAN SHOWING LOCATION OF PILES, PIER SU2
Scale: 1 Inch = 3 Feet

Note: Locations as per plan are shown thus \circ
Locations as driven are shown thus \bullet
Locations shown outside perimeter of footing represent base of battered piles.



BC 4505-3
Micro-filmed 1965
2167 FE10831

CITY OF WINNIPEG AUBREY STREET WATER CROSSING RIP-RAP AT PIER SU2 AS-BUILT LOCATION OF PILES AT PIER SU2		
TEMPLETON ENGINEERING COMPANY		
DESIGNED BY:	SCALE:	PLAN NO.
DRAWN BY:	AS SHOWN	
APPROVED BY:	DATE:	W-14-38
	JUNE 18, 1957	