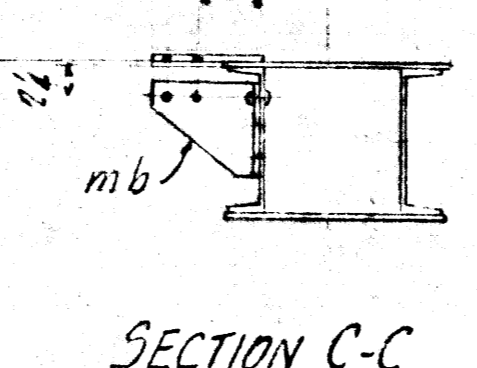
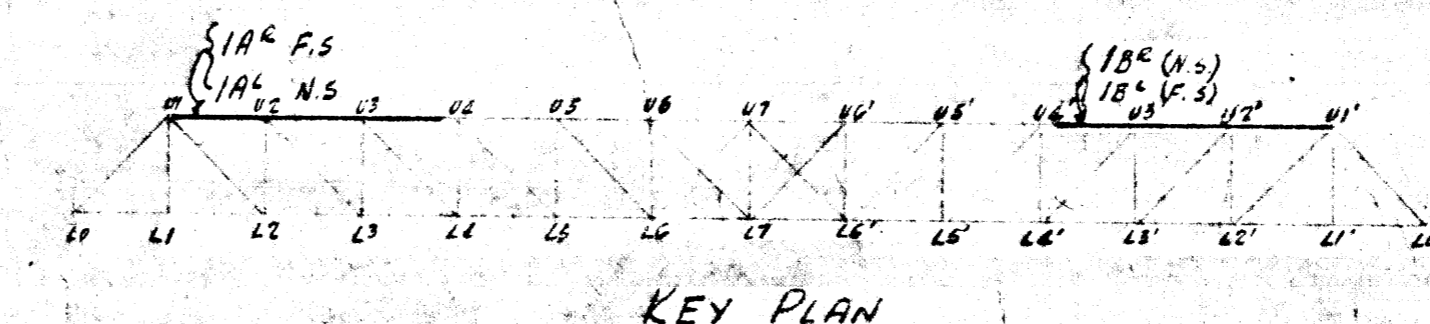


MATERIAL LIST

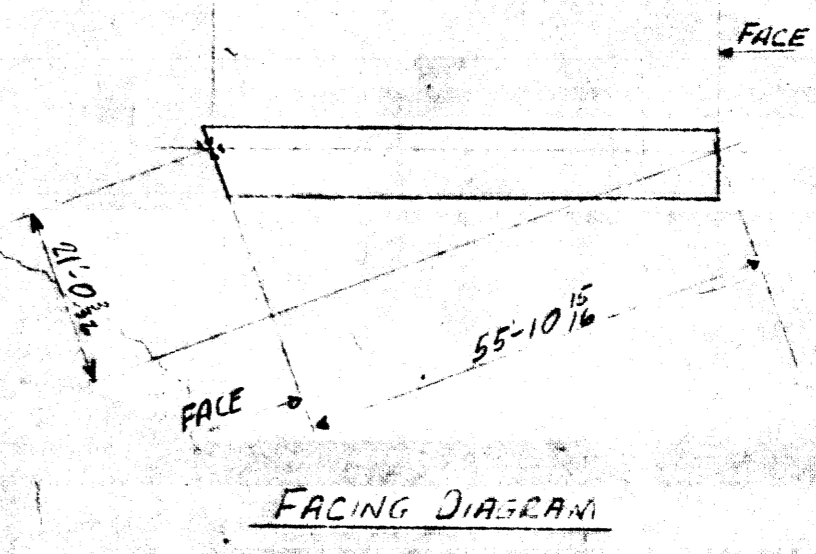
| | | | |
|-----------------------|-----------------|------------------|---------|
| pa 18 x 3/4 (R)E | 59-7 1/2 (FIE) | ga 8 x 3/4 R | 88 |
| pb 18 x 3/4 (R)E | 14-6 1/2 | gb 1 1/2 x 3/4 R | 3-74 |
| pc 17 x 3/4 (R)E | 17-4 | gc 2 1/2 x 3/4 R | 3-8 1/2 |
| pd 17 x 3/4 (R)E | 17-6 1/2 | gd 2 1/2 x 3/4 R | 3-3 1/2 |
| pf 17 x 3/4 (R)E | 16-4 1/2 | gf 2 1/2 x 3/4 R | 2-4 1/2 |
| pg 18 x 3/4 R | 102 | gg 2 1/2 x 3/4 R | 2-5 |
| ha 2 1/2 x 3/4 R | 3-5 1/2 (BENT) | gh 1 3/8 x 3/4 R | 2-5 1/2 |
| hb 3 x 3/4 BAK | 1-11 1/2 (BENT) | gc 2 1/2 x 3/4 R | 3-5 1/2 |
| hc 3 x 3/4 BAK | 2-2 1/2 (BENT) | | |
| da 3 1/2 x 3/4 FILL | 1-5 | | |
| db 4 x 3/4 FILL | 9 | | |
| dc 3 x 3/4 FILL | 10 | | |
| mal 3 1/2 x 3 x 3/4 L | 104 | | |
| mb 7-9 x 3/4 TEE | 74 | | |
| mc 3 1/2 x 3 x 3/4 L | 118 | | |
| da 1 1/2 x 3/4 R | 3-3 1/2 | | |
| db 10 x 3/4 (R)E | 3-0 1/2 | | |
| dc 3/4 x 3/4 BAR | 1-11 | | |



- ONE - TOP CHORD SECTION 1A^R.
- ONE - do 1A^L (LEFT)
- ONE - do 1B^R
- ONE - do 1B^L (LEFT)



BC 4505-14
Micro-Plated 1965
89-82



GENERAL NOTES

SPECIFICATION - CSA S6 1952 FOR HIGHWAY BRIDGES

MATERIAL - CSA G40.4 MEDIUM STRUCTURAL STEEL OR EQUIVALENT

RIVETS - 3/8"

OPEN HOLES - 1 1/2"

SHOP RIVET HOLES - 1/8" UP TO AND INCLUDING 3/8" MAY BE PUNCHED FULL SIZE

MAIN FIELD CONNECTIONS - TO BE EITHER DRILLED AND REAMED IN ASSEMBLY - OR REAMED OR DRILLED TO APPROVED STEEL TEMPLATE.

SECONDARY FIELD CONNECTIONS - (LATERALS & SWAY BEARING CONNS) MAY BE PUNCHED FULL SIZE

PAINT - RED LEAD No. 362

FABRICATION D.B. Co. WINNIPEG

P.L. PRATLEY DENG MILCE M. ASCE
CONSULTING ENGINEER
MONTREAL, CANADA.

DOMINION BRIDGE CO., LIMITED
LACHINE, QUE.

DESCRIPTION WATER PIPE BRIDGE
AUBREY STREET WINNIPEG

DETAIL TOP CHORD SECTION U1-U4

PROPRIETOR CITY OF WINNIPEG

PURCHASER D.B. Co. WINNIPEG

DRAWN BY [Signature] APRIL 30 1963

CHECKED BY K. CAPE MAY 15 1963

APPROVED [Signature]

SCALE = 1 FOOT VAULT NO. []

DEPT. GAVIN CONT. W-6217

MATERIAL BILL SHIPPING BILL MADE IN CANADA

| | | | |
|--------------|--------|----------------|---------|
| REVISION NO. | DATE | REVISION | MADE BY |
| 1 | May 23 | 1/2" dia added | JFW |
| 2 | May 28 | Gusset Gd revo | REC |
| 3 | May 28 | HOLE OMITTED | REC |