

2-12 x 3/4 J C 20.7 x 26-0 3/4 (FIE)
 1-18 x 3/8 R.E.R (top) x 26-0 3/8 (FIE)
 1-17 x 1/2 R.E.R (bot) x 22-5

2- END POSTS 5A^R
 2- do 5A^L (LEFT)

For General Notes see Drwg #1
 Rivets - 3/4"
 Open Holes - 1 1/2"

FABRICATION BY D.B. CO WINNIPEG

P.L. PRATLEY D. ENG. M.I.C.E. M.A.S.C.E.
 CONSULTING ENGINEER
 MONTREAL CANADA

DOMINION BRIDGE CO., LIMITED
 LACHINE, QUE.

DESCRIPTION WATER PIPE BRIDGE
 AUBREY STREET, WINNIPEG

DETAIL END POST

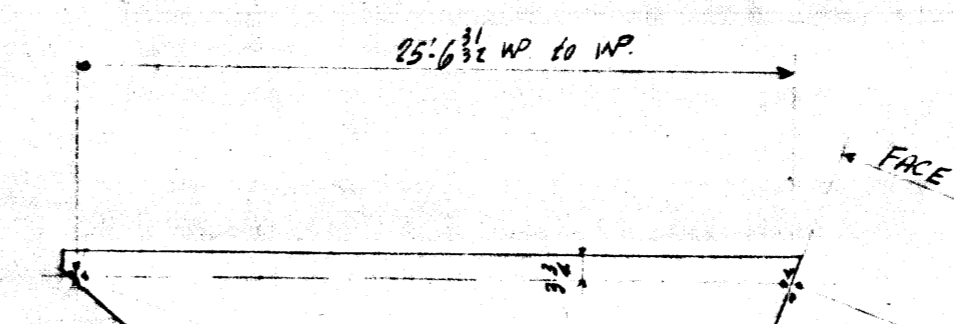
PROPRIETOR CITY OF WINNIPEG
 PURCHASER D.B. CO WINNIPEG

DRAWN M.P. MAY 5 1958
 CHECKED J.F. L. to M.A. 8/58 DRWG NO. 5A

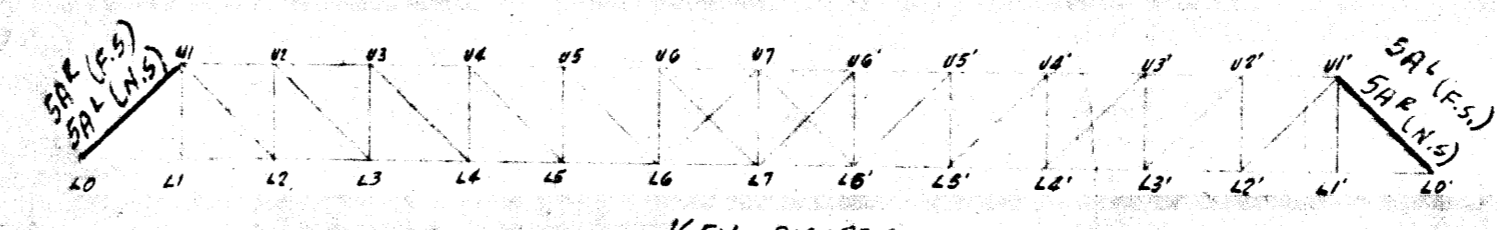
APPROVED

SCALE = 1 FOOT
 DEPT. GAVIN CONT. W-6217

SHIPPING BILL
 MADE IN CANADA



FACING DIAGRAM



KEY DIAGRAM

BC 4505-18
 Micro-Filmed 1965

REVISION NO.	DATE	BY	DESCRIPTION

MATERIAL BILL

SHIPPING BILL

MADE IN CANADA