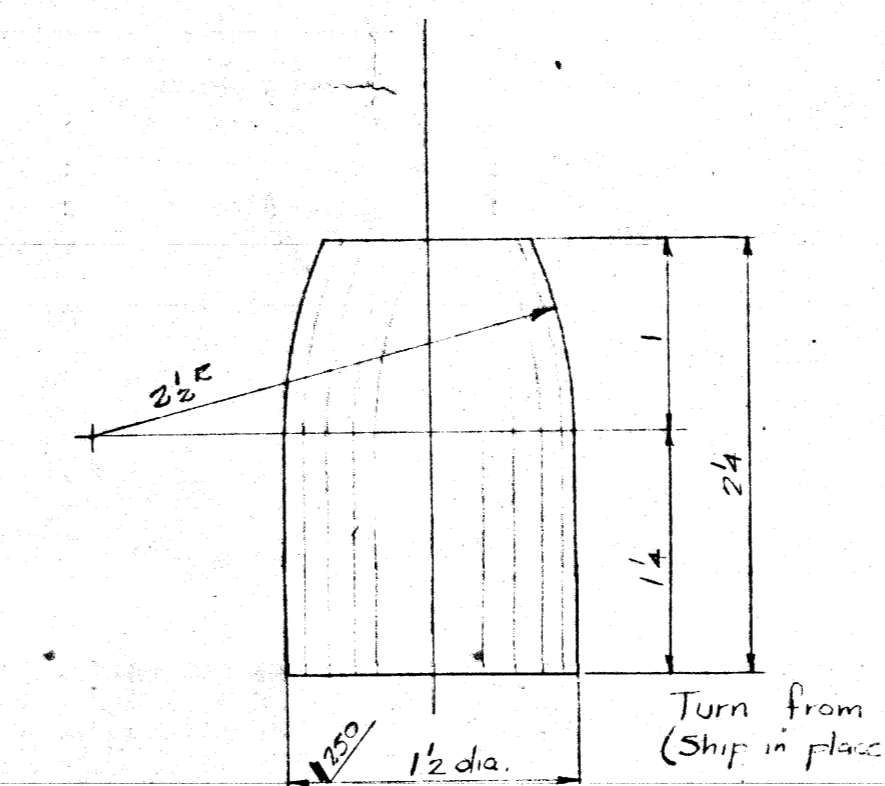
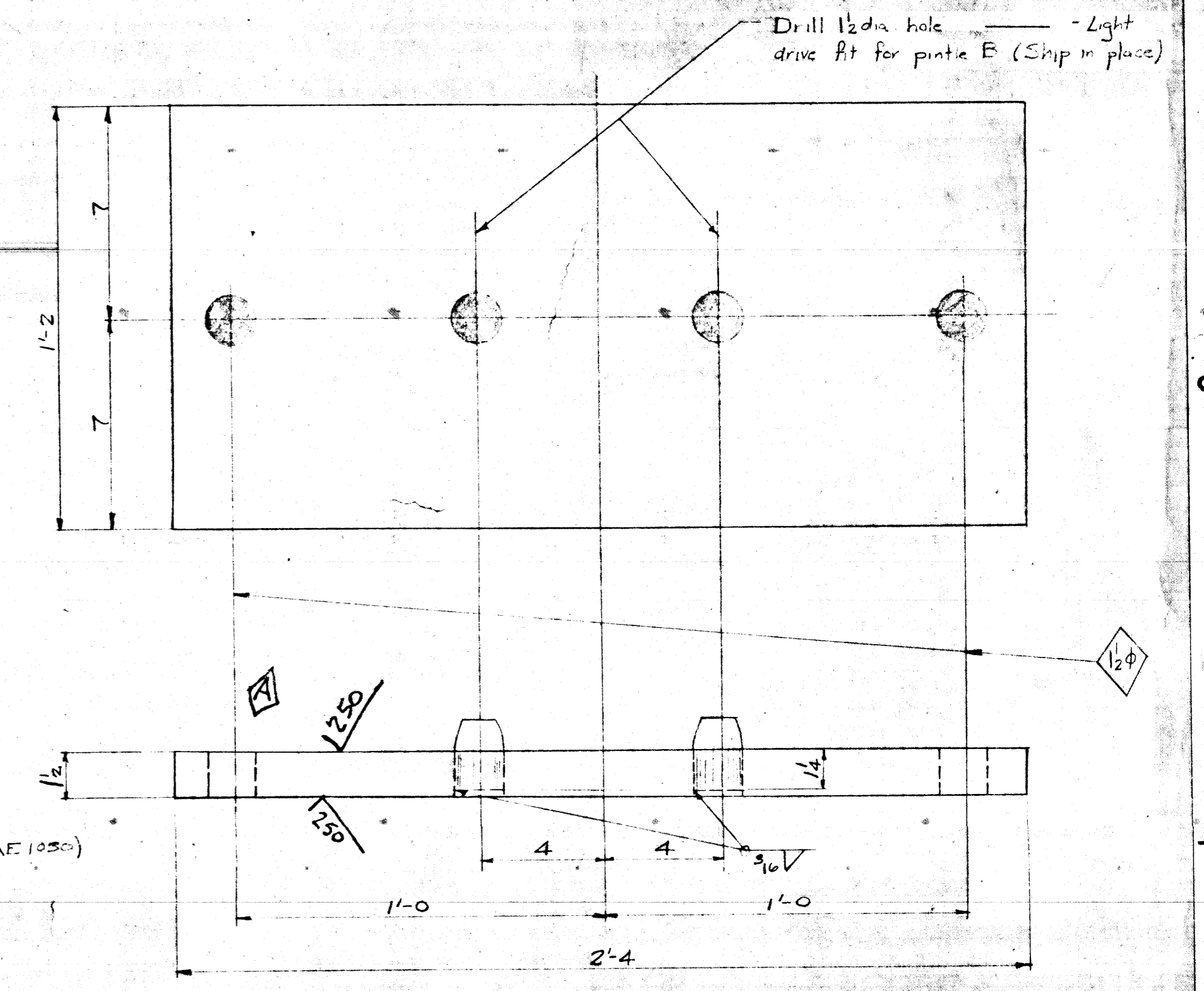


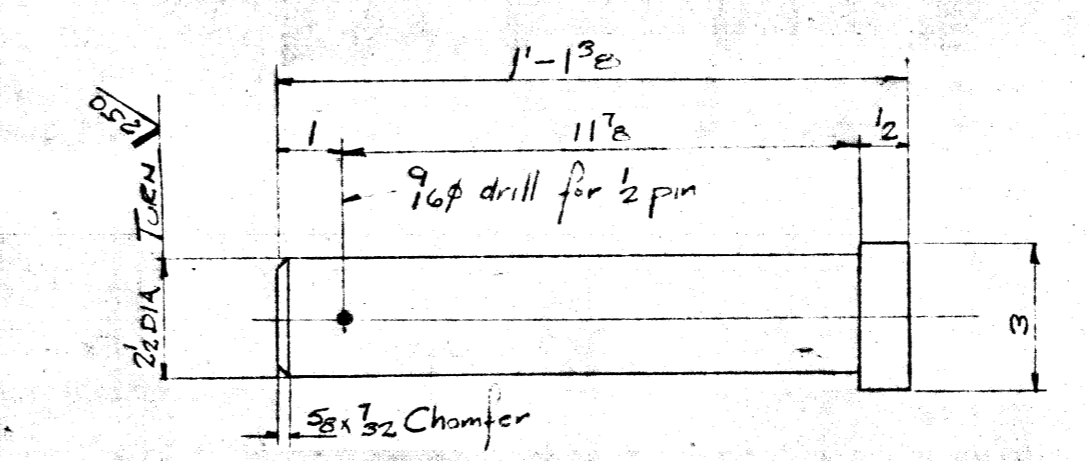
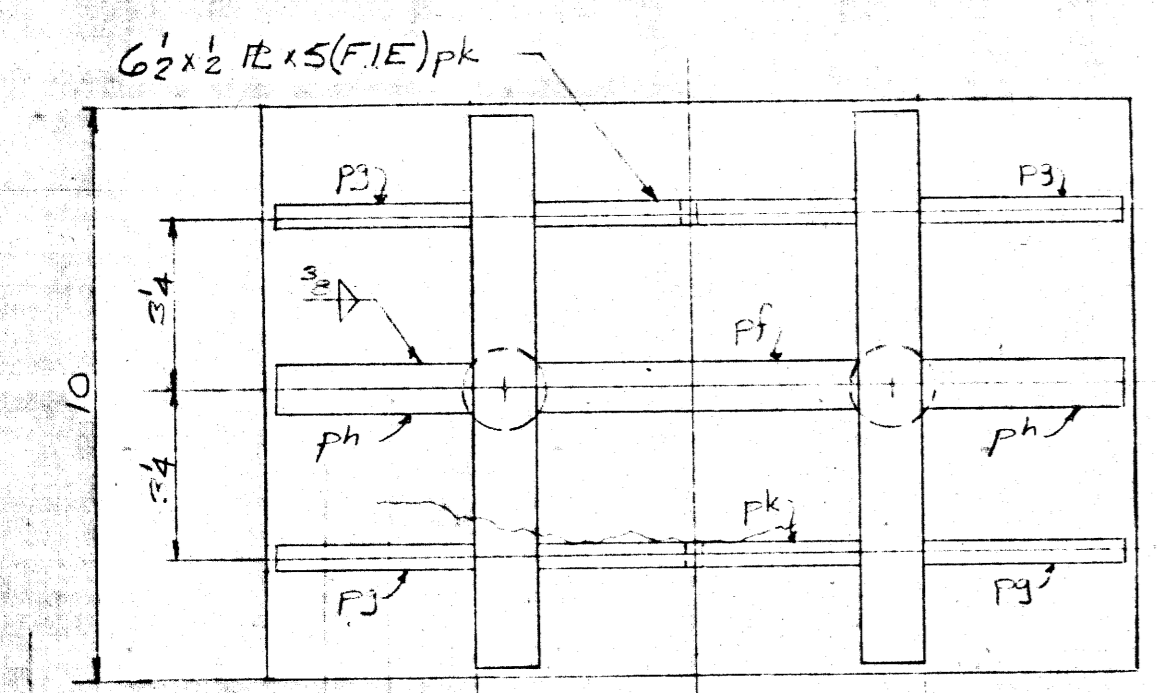
2 - BASES - 8A



PINTLE 'B' - 4 REQD.
SCALE - FULL SIZE

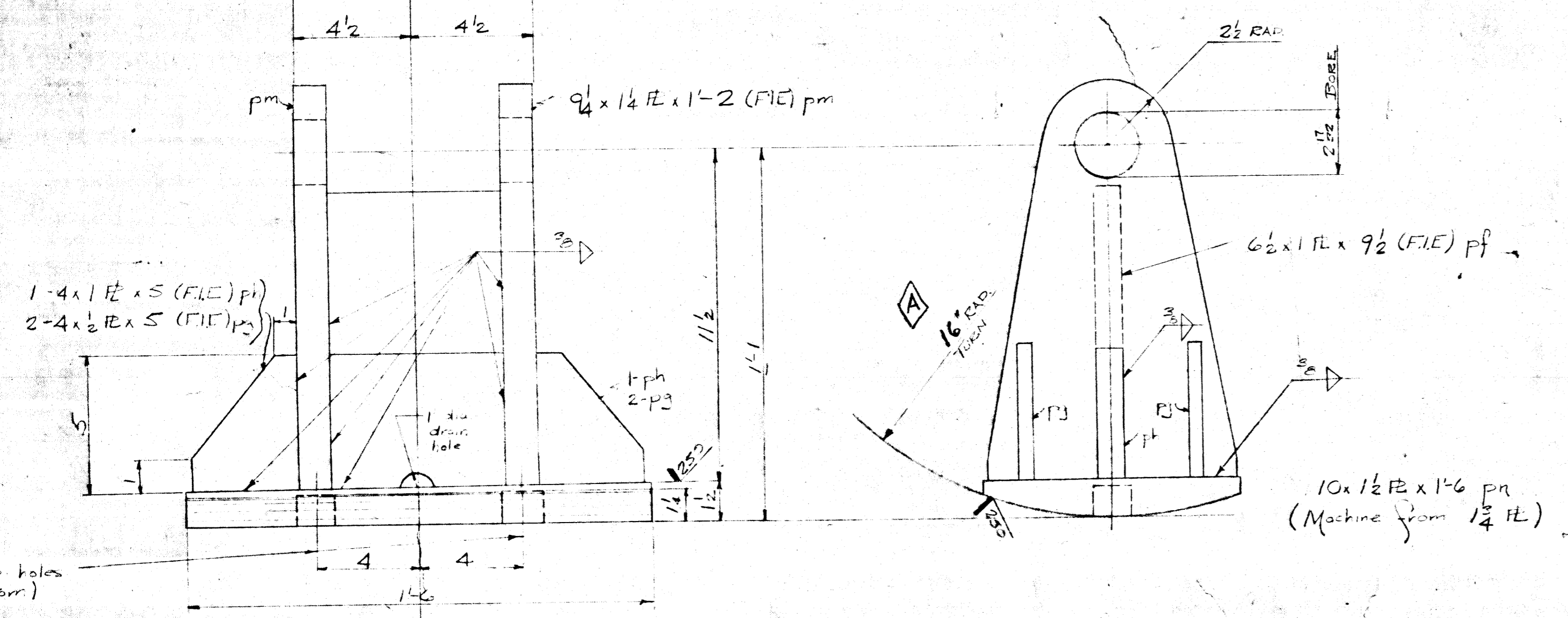


14 x 1 1/2 PL x 2-4 (Machine from 1 1/4" PL)
Two - BASE PLATES - BPIC

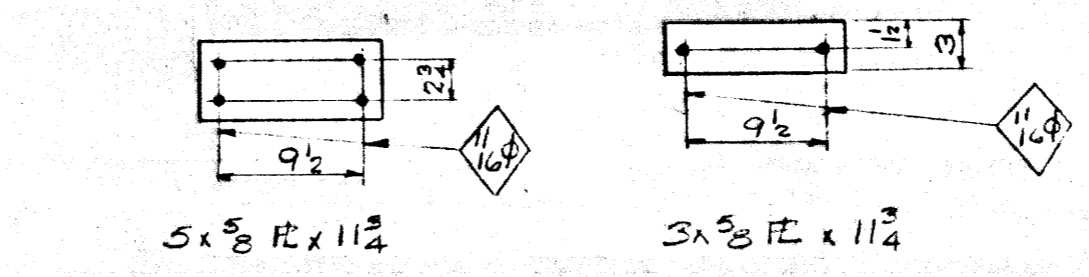


1 - 2 1/2 x 3/8 Cotter Pin
(Ship with Pin 'F')

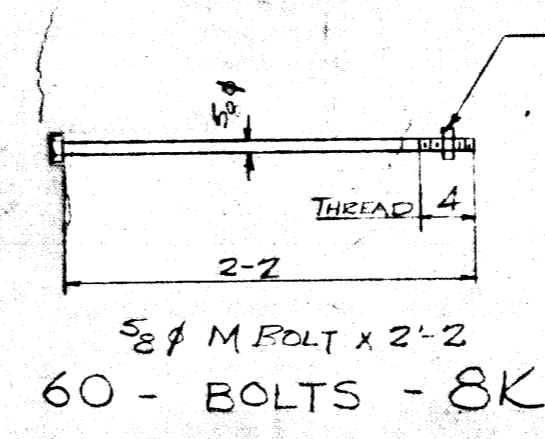
4 - PINS - 8F



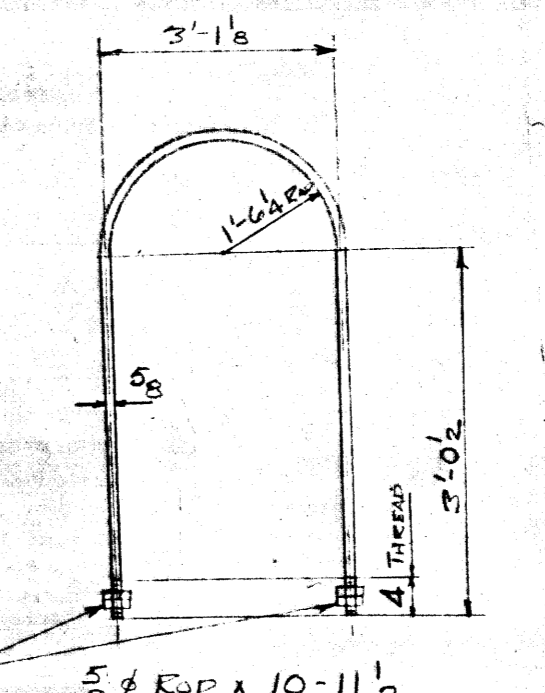
2 - BASES - 8D



30 - WASHER PLATES - 8G 30 - WASHER PLATES - 8H



60 - BOLTS - 8K



30 - HOOP BOLTS - 8M

GENERAL NOTES

SPECIFICATIONS
CSA - S6 - 52

MATERIAL
CSA G 40.4 MEDIUM STRUCTURAL STEEL OR EQUIVALENT EXCEPT FOR PIN MATERIAL TO BE ATLAS SPS-245.

HOLES
AS NOTED

PAINT
RED LEAD No. 362, EXCEPT ALL MACHINED SURFACES TO RECEIVE ONE COAT McCOLL-FRONTENAC RUST PROOF COMPOUND.

WELDING SYMBOLS
D.B. Co. SEPT '53

BC 4505-21

Micro-Filmed 1965

DOMINION BRIDGE CO., LIMITED LACHINE, QUE.	
DESCRIPTION CITY OF WINNIPEG WATER PIPE BRIDGE - AUBREY STREET	
DETAIL PIER MEMBERS	
PROPRIETOR CITY OF WINNIPEG PURCHASER DOMINION BRIDGE CO. - WINNIPEG	
DRAWN J.R.H. May 5/53	DRWG NO. 8A
CHECKED J.D. GRAY	
APPROVED _____	
SCALE = 1 FOOT	VAULT NO. _____
DEPT. CIVIL	CONT. W-6217

REVISION NO.	DATE	REVISION	MADE BY
A	May 20	2-BPIC Repl. - Fin. 2-5. Rad 8D to 16"	

SHIPPING BILL MADE IN CANADA
LACHINE CONT. 1-8696