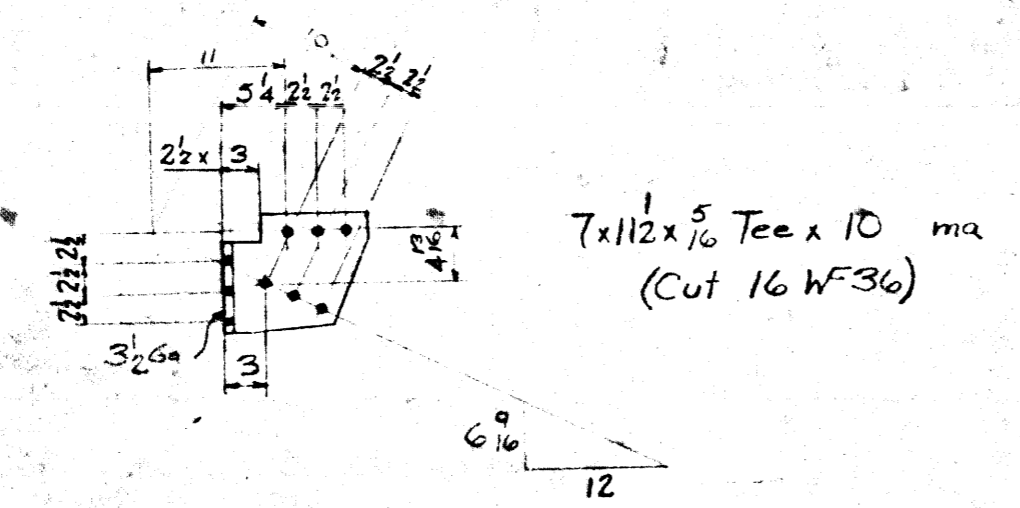
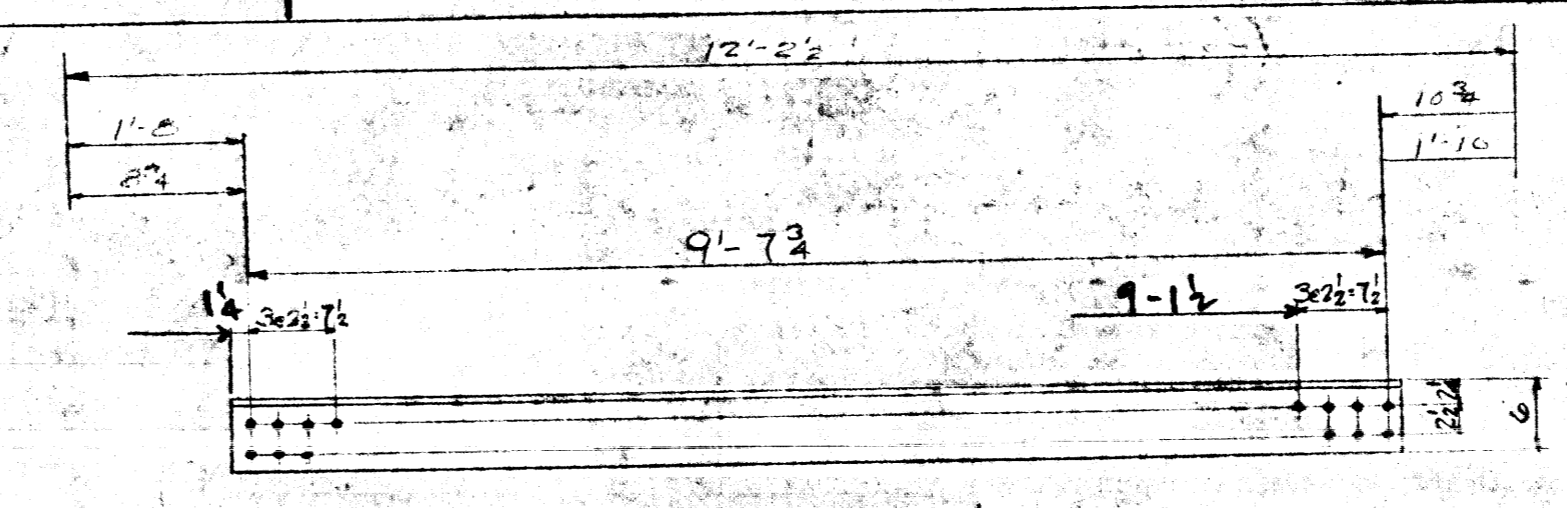


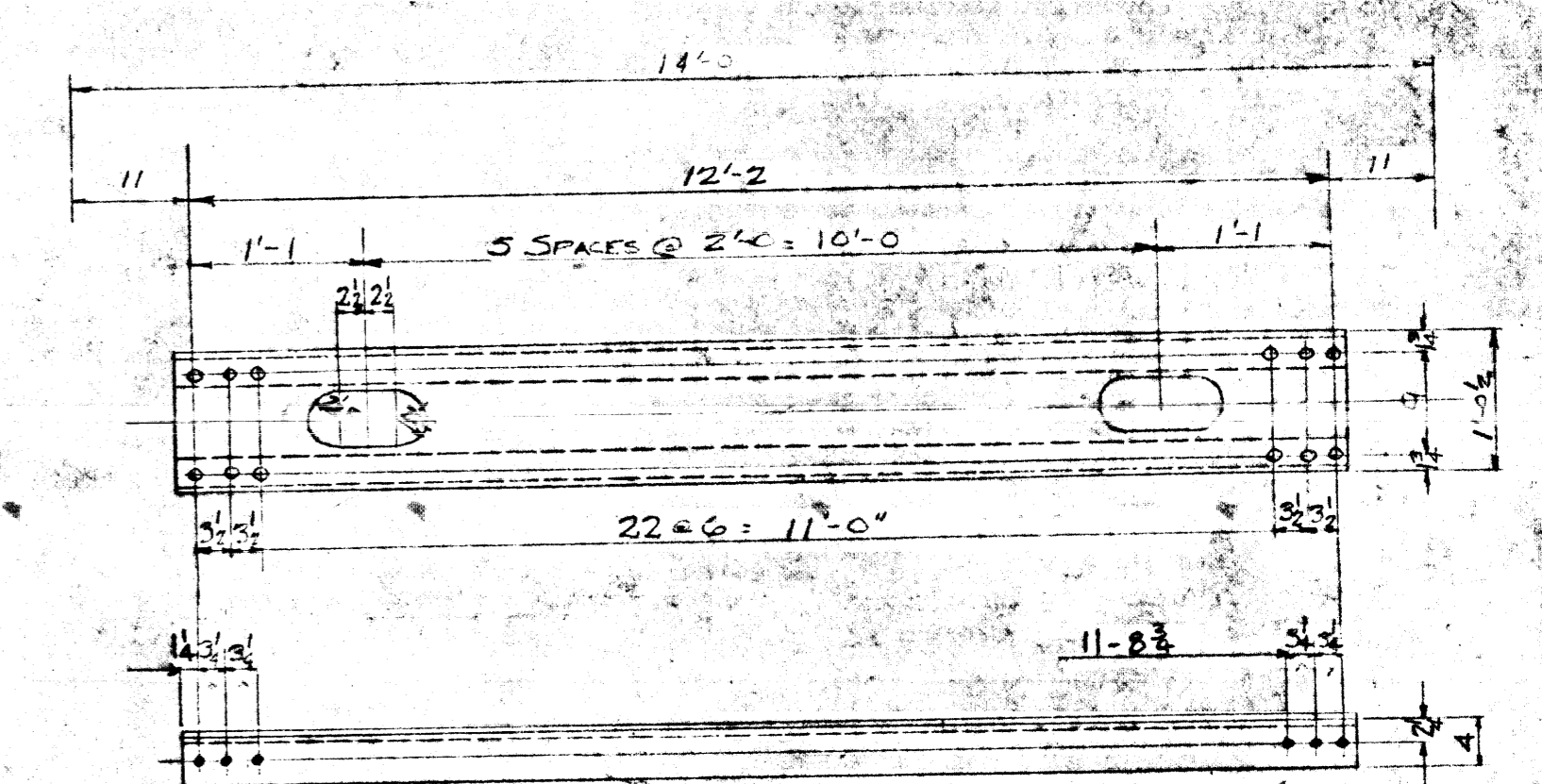
3 x 2 1/2 x 4 L x 10'-1 1/2
48 - DIAGONALS - 9A



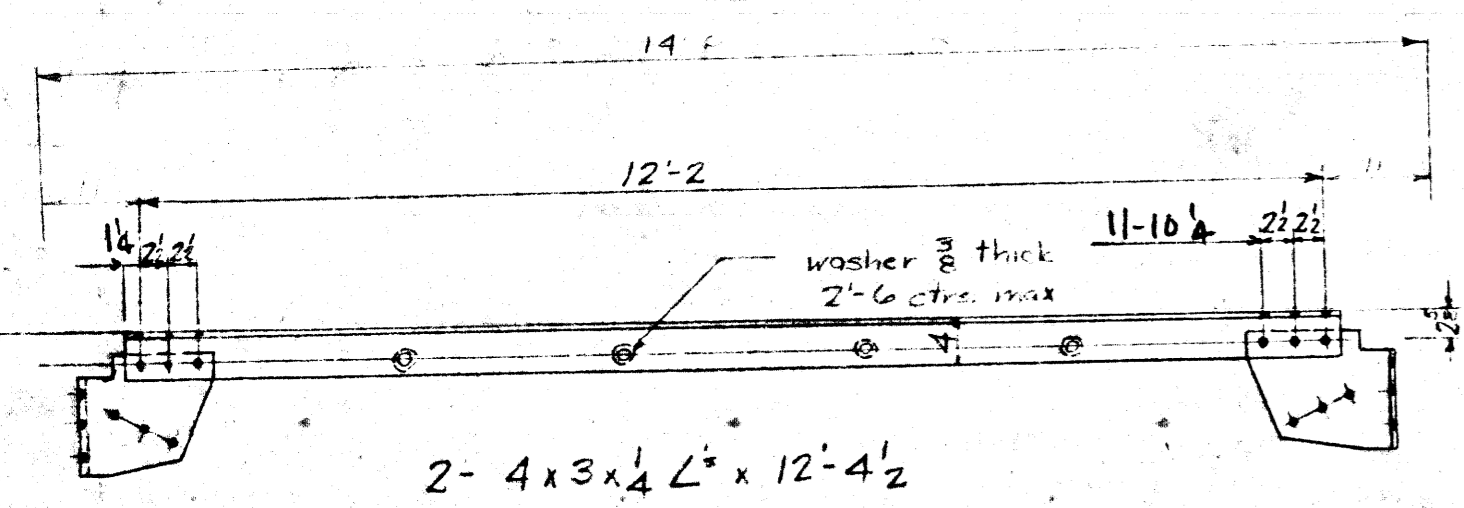
7 x 11 1/2 x 5/16 Tee x 10 mb
(Cut 16 WF 36)



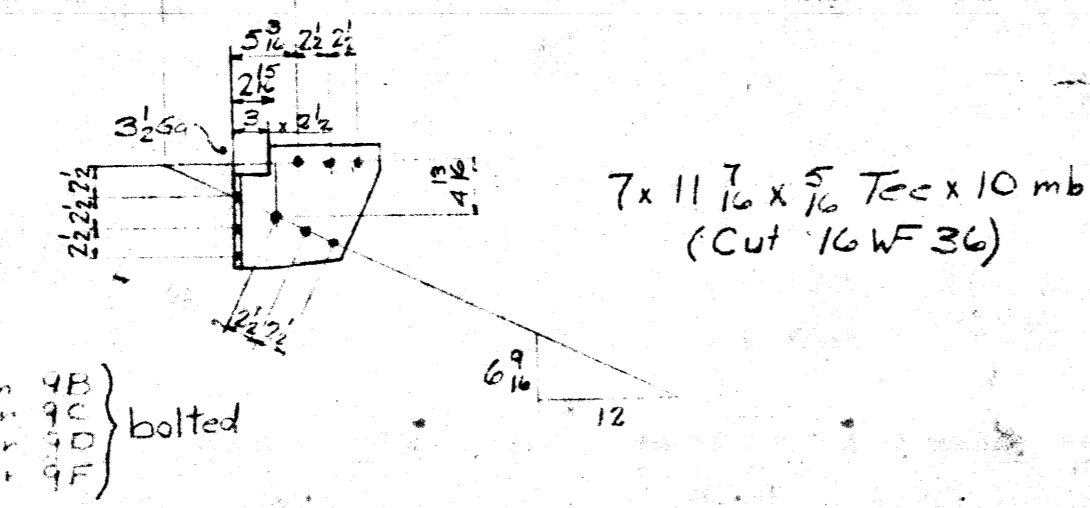
6 x 3 1/2 x 5/16 L x 9'-10 1/4
8 - DIAGONALS - 9P



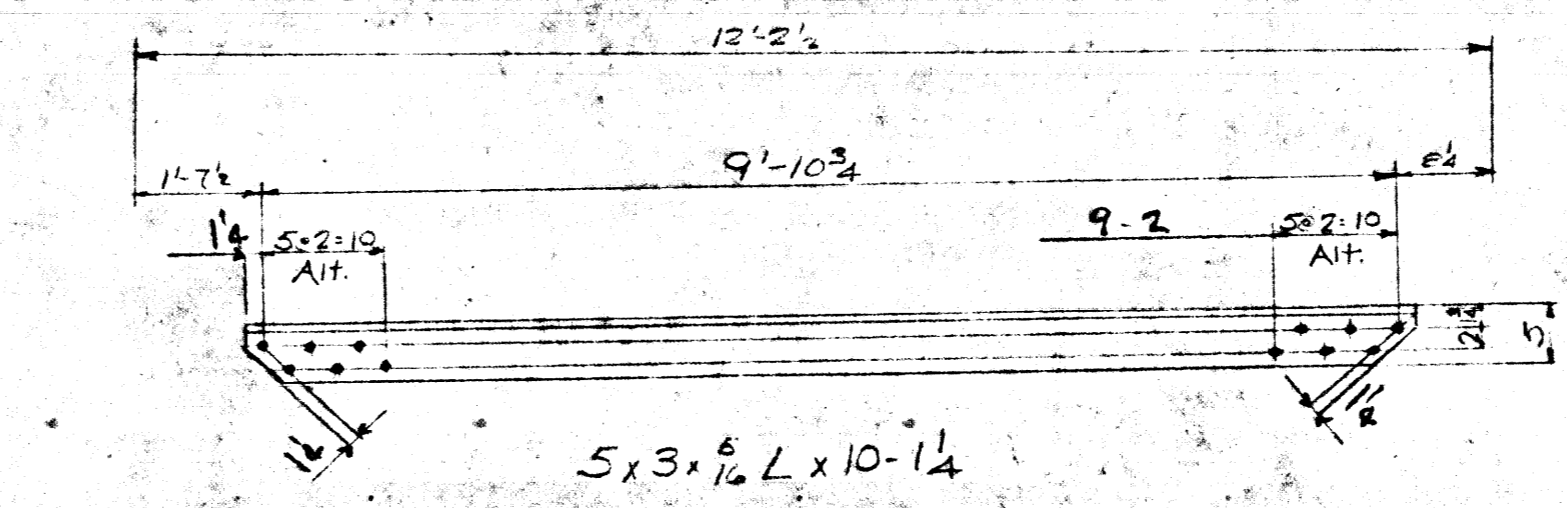
1-12 x 4 FE x 12'-4 1/2
2-4 x 3 x 5/16 L x 12'-4 1/2
4 - STRUTS - 9Y



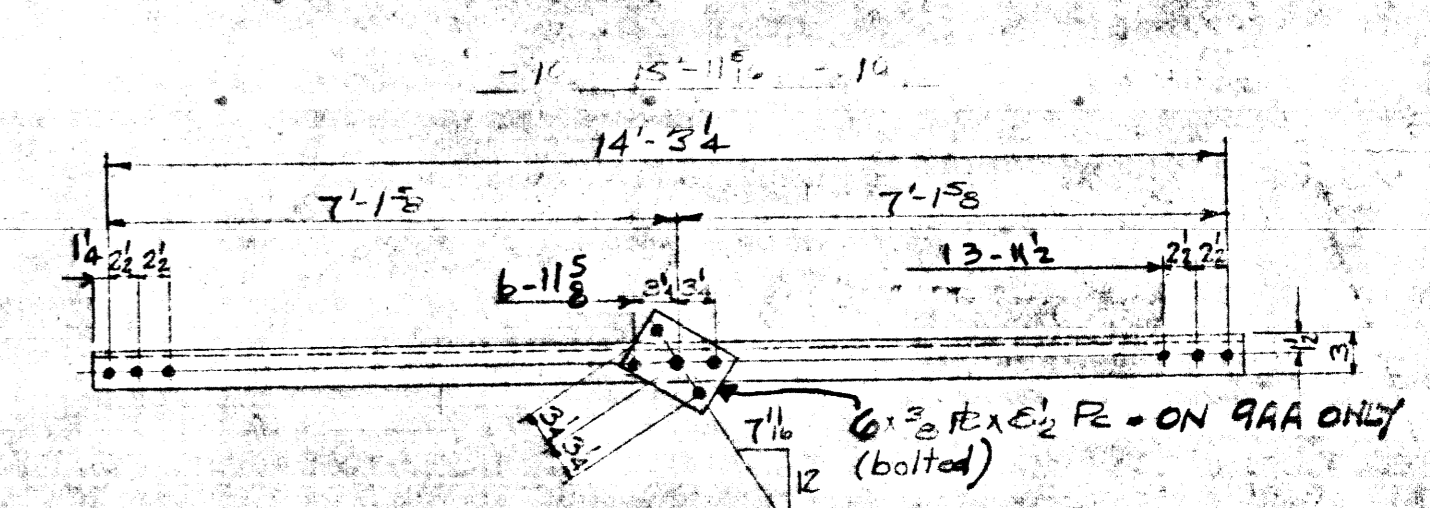
2-4 x 3 x 1/4 L x 12'-4 1/2



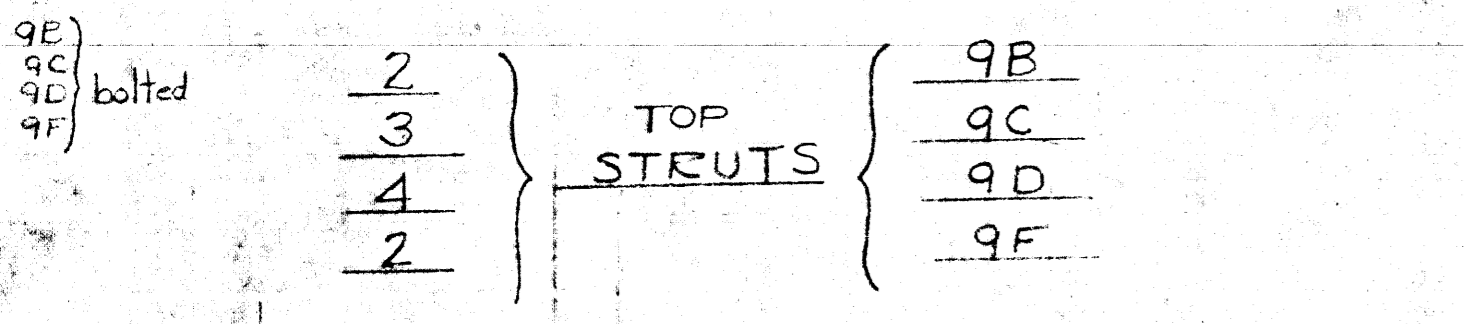
7 x 11 1/2 x 5/16 Tee x 10 mb
(Cut 16 WF 36)



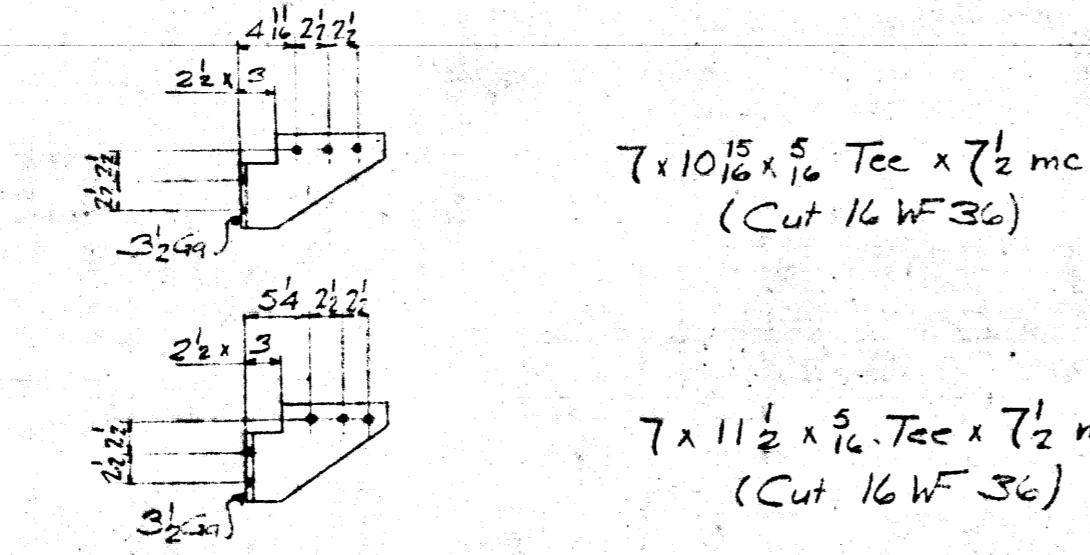
5 x 3 x 5/16 L x 10'-1 1/4
8 - DIAGONALS - 9V



3 x 2 1/2 x 1/4 L x 14'-5 3/4
5 - DIAGONALS - 9AA
5 - do - 9W

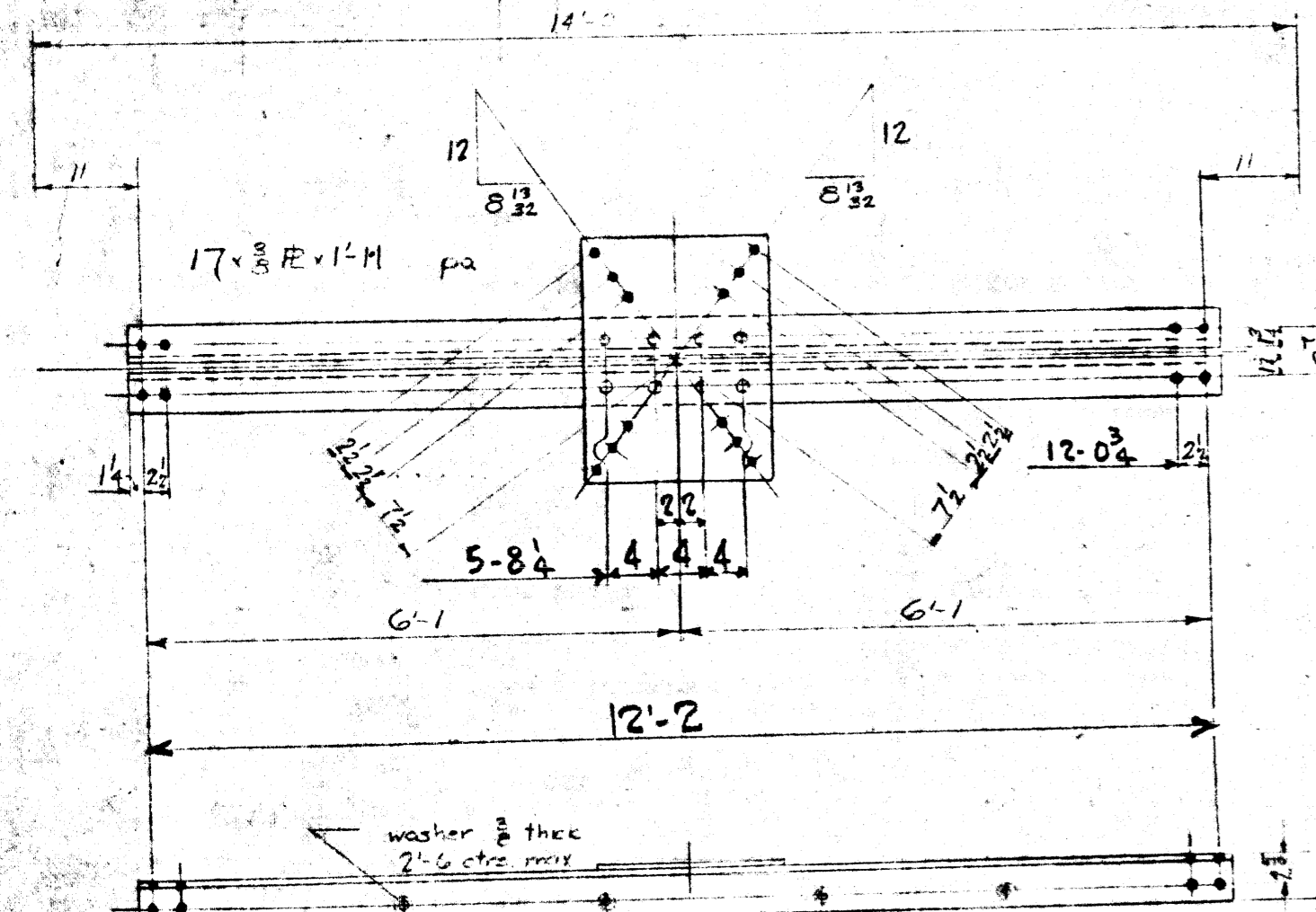


2
3
4
2 } TOP STRUTS {
9B
9C
9D
9E
9F

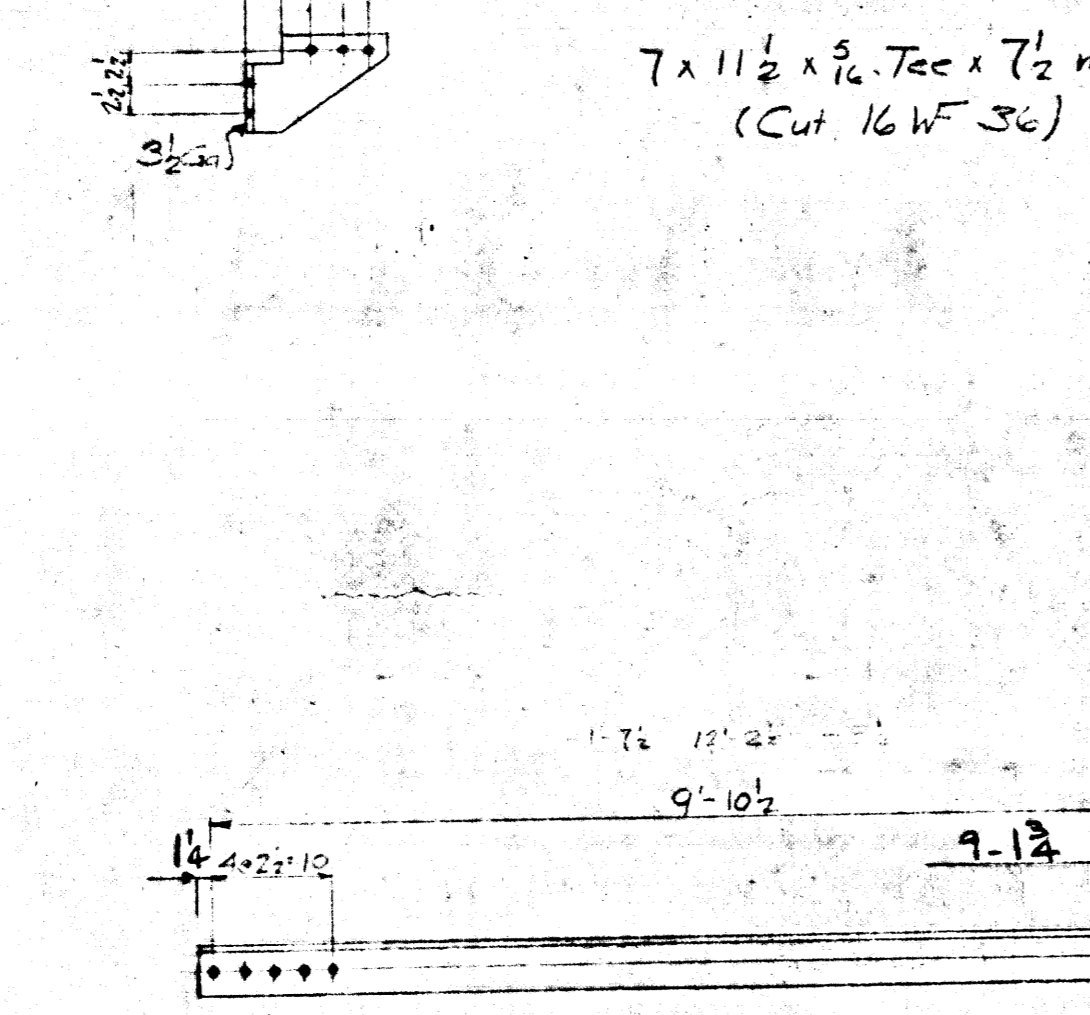


7 x 10 1/2 x 5/16 Tee x 7 1/2 mb
(Cut 16 WF 36)

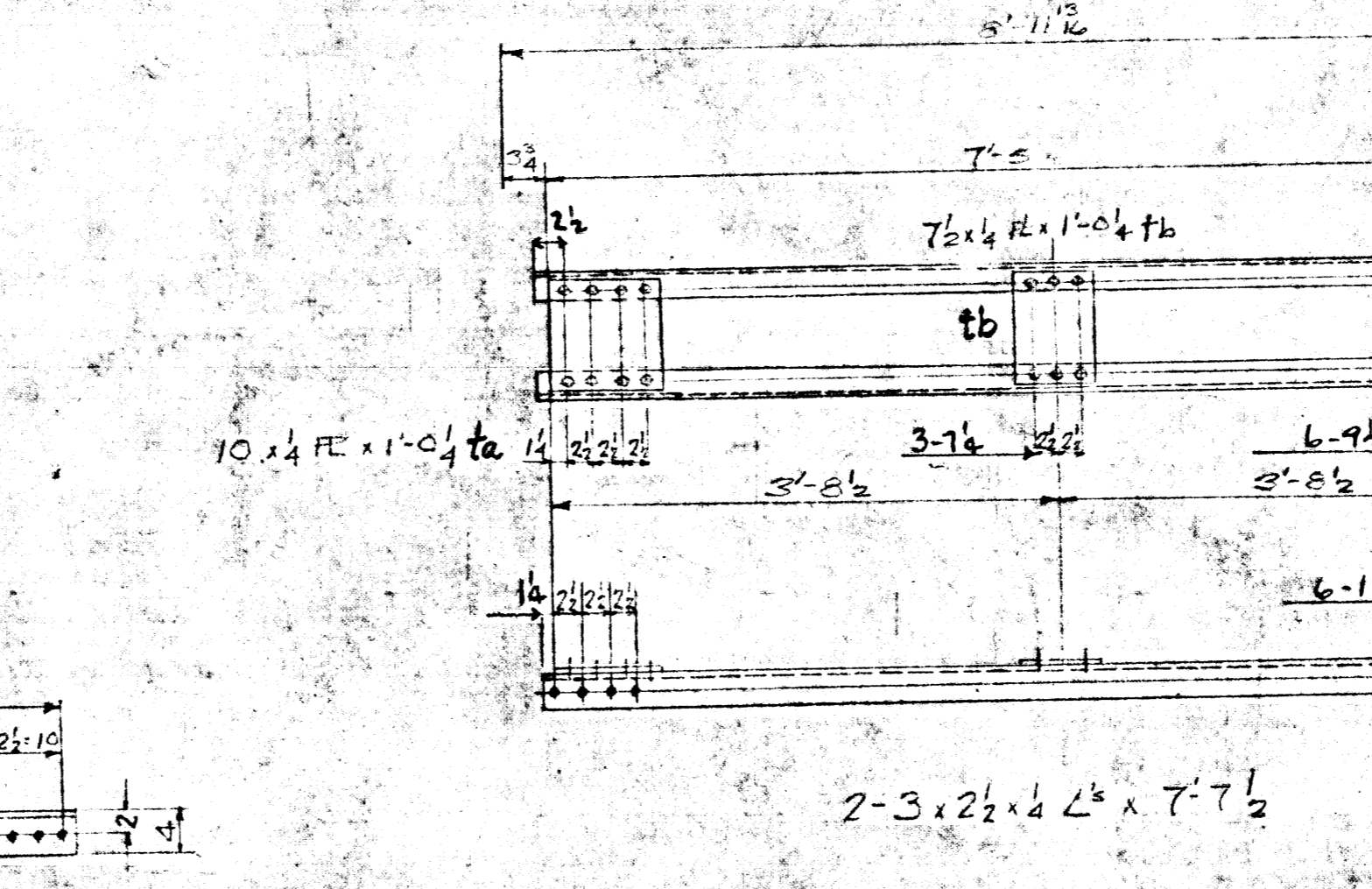
7 x 11 1/2 x 5/16 Tee x 7 1/2 mb
(Cut 16 WF 36)



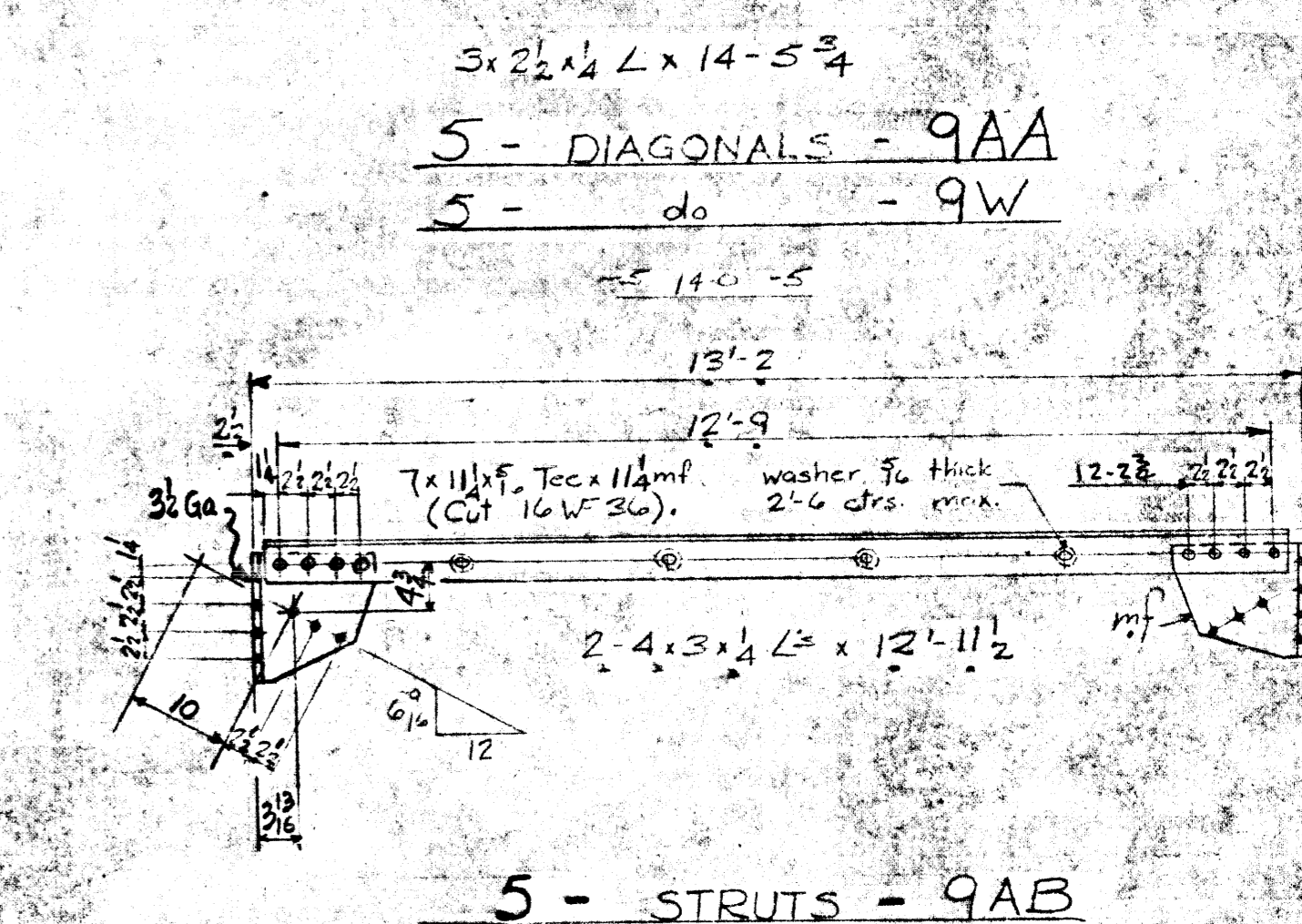
2-4 x 3 x 1/4 L x 12'-4 1/2
12 - STRUTS - 9G



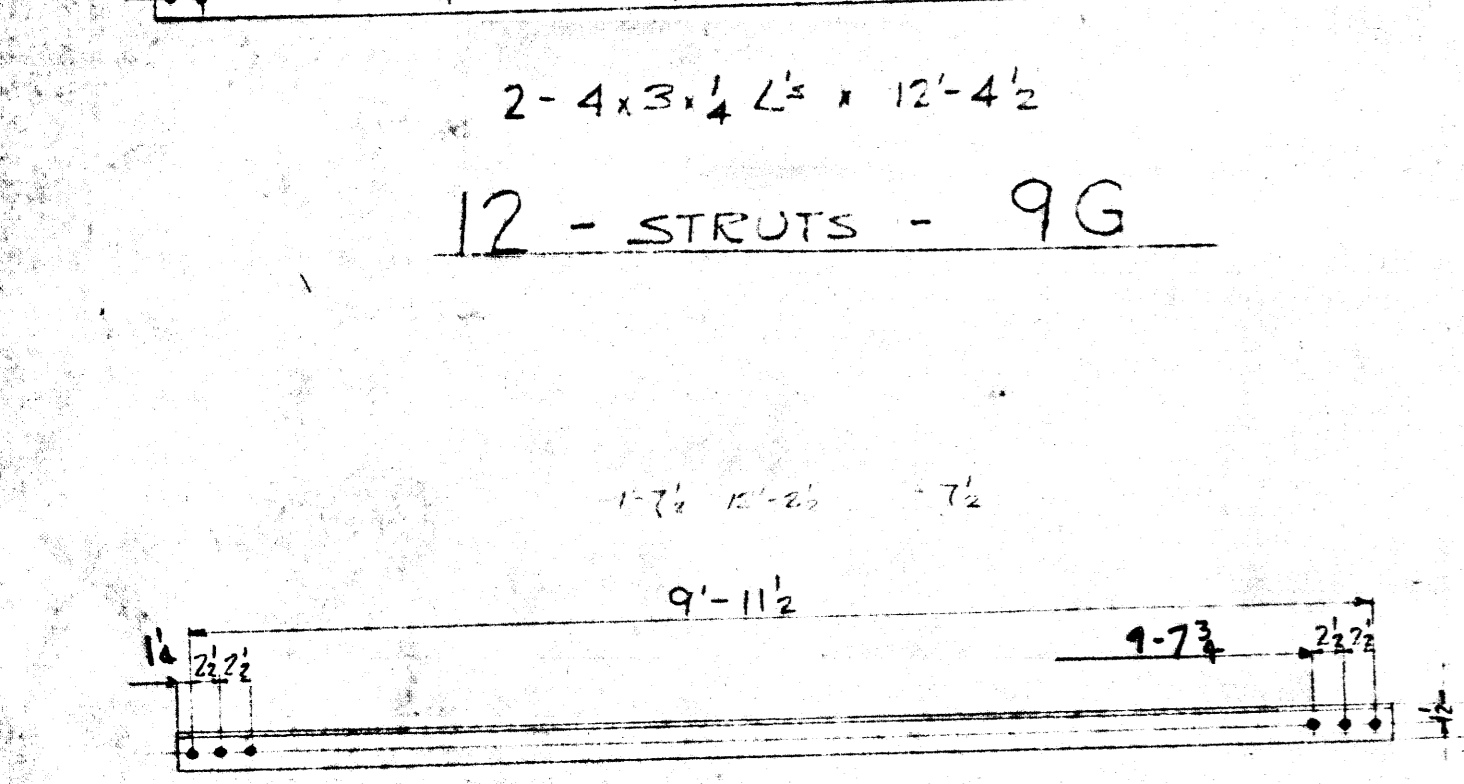
4 x 3 x 5/16 L x 10'-1
8 - DIAGONALS - 9M



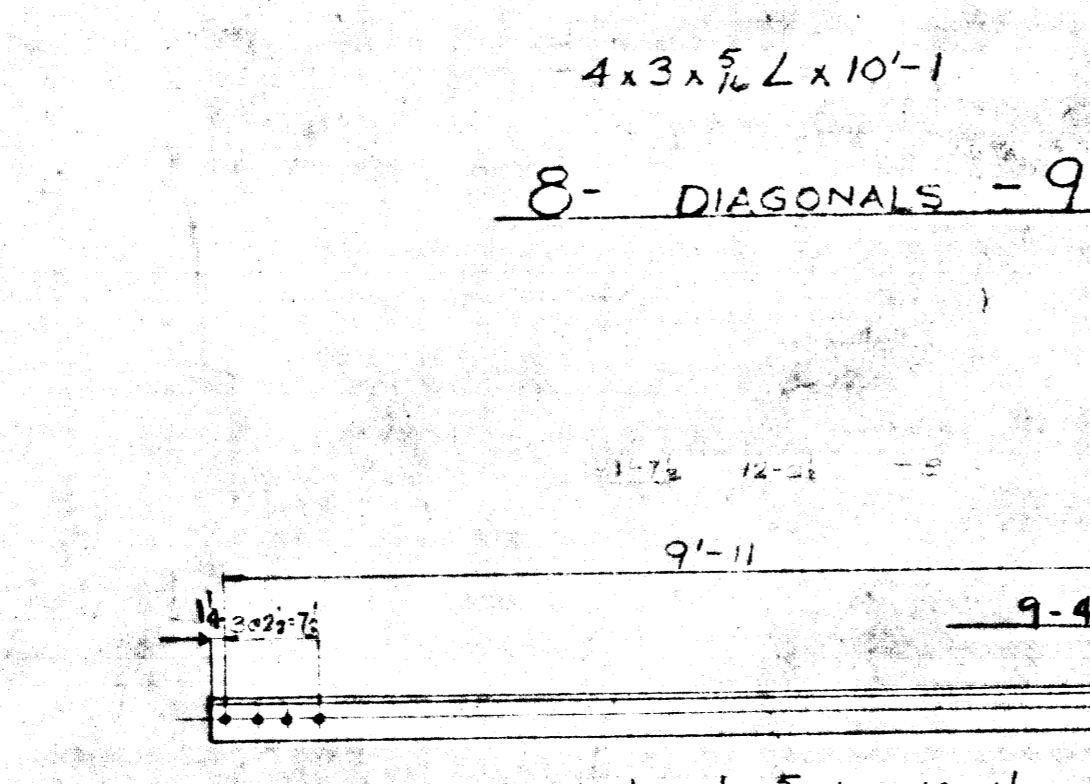
2-3 x 2 1/2 x 1/4 L x 7'-7 1/2
4 - DIAGONALS - 9T



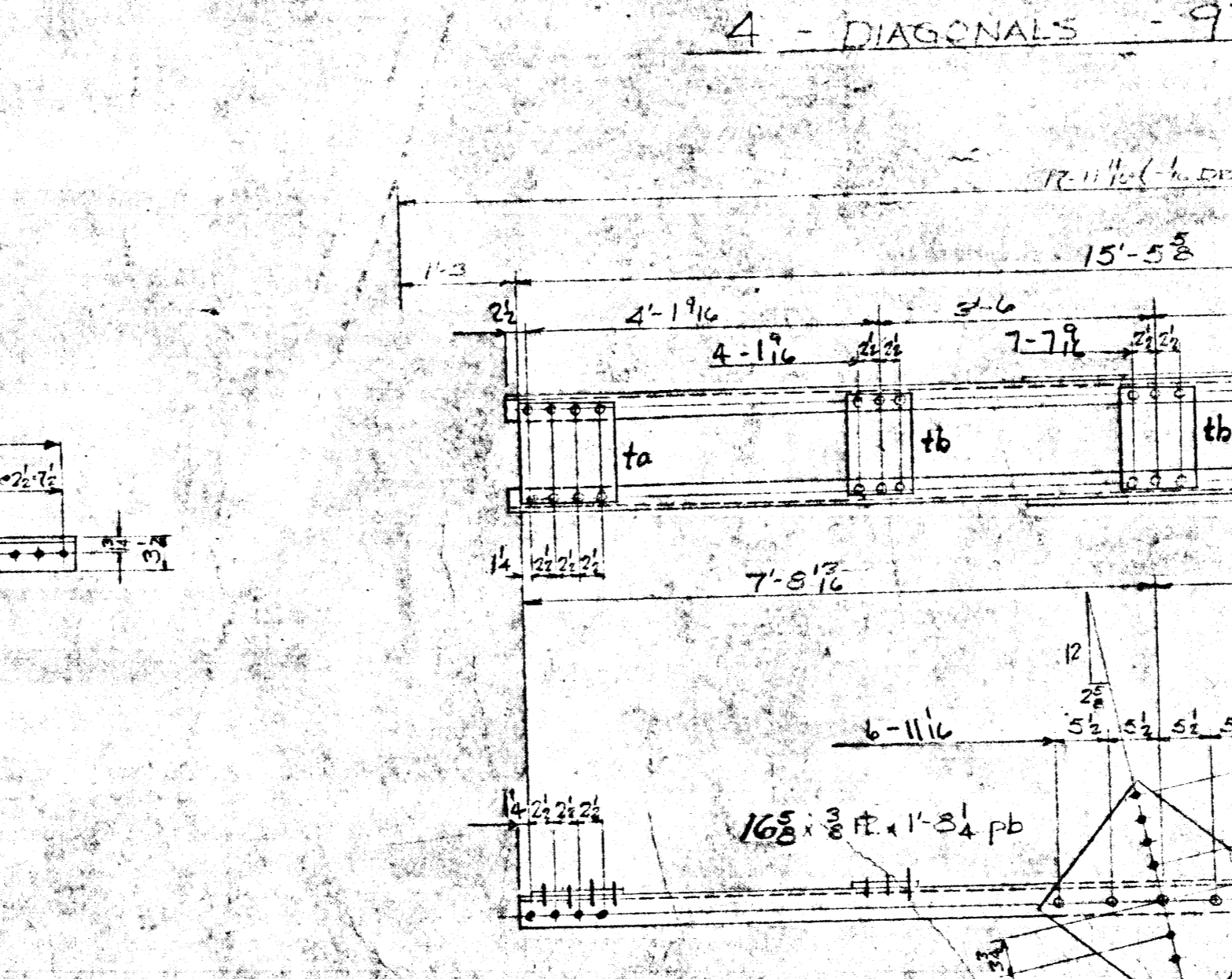
2-4 x 3 x 1/4 L x 12'-11 1/2
5 - STRUTS - 9AB



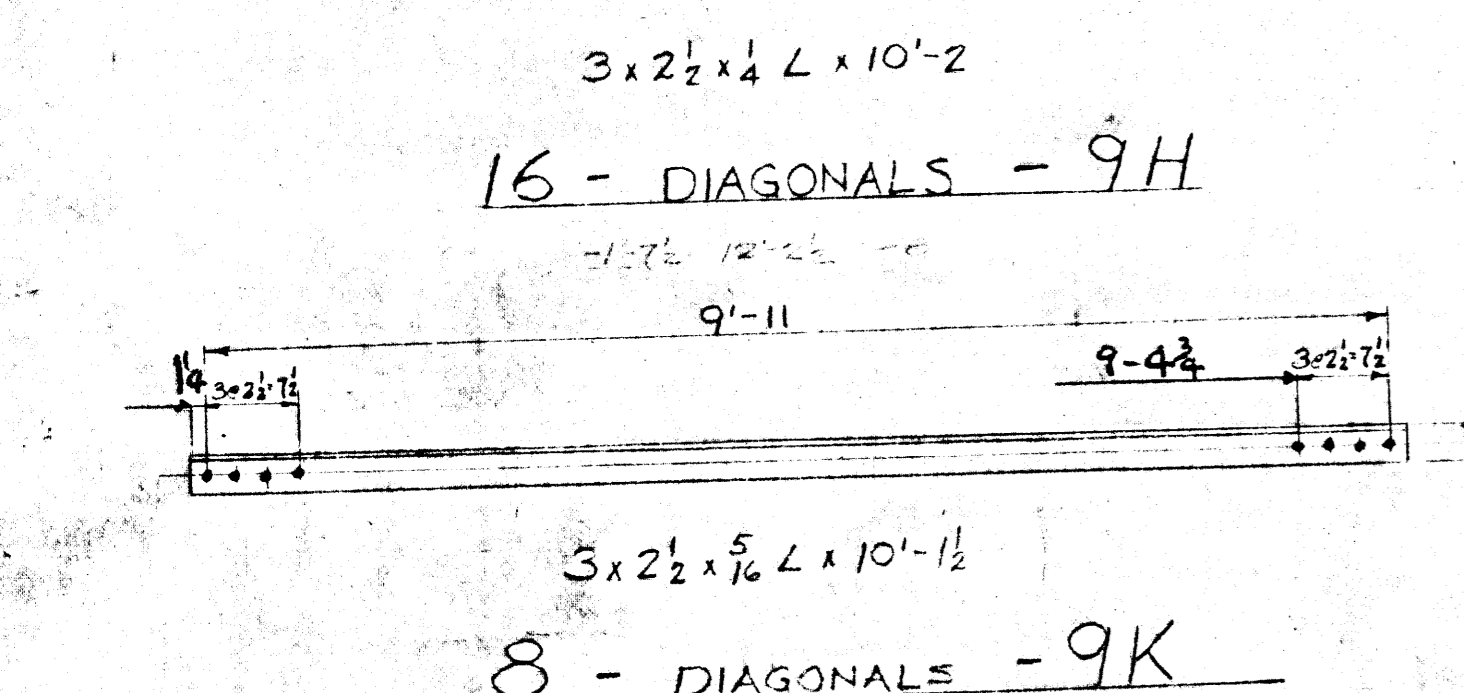
3 x 2 1/2 x 1/4 L x 10'-2
16 - DIAGONALS - 9H



3 1/2 x 2 1/2 x 5/16 L x 10'-1 1/2
8 - DIAGONALS - 9N



2-3 x 2 1/2 x 1/4 L x 15'-8 1/2
2 - DIAGONALS - 9S



3 x 2 1/2 x 5/16 L x 10'-1 1/2
8 - DIAGONALS - 9K

FABRICATION BY D.B. Co WINNIPEG
FOR GENERAL NOTES, SEE DWG. #1
RIVETS 3/4"
OPEN HOLES 1/8"

BC 4505-22

P.L. PRATLEY D.ENG. M.I.C.E. MASSE CONSULTING ENGINEER MONTREAL, CANADA	
DOMINION BRIDGE CO., LIMITED LACHINE, QUE.	
DESCRIPTION CITY OF WINNIPEG WATER PIPE BRIDGE - AUBREY ST.	
DETAIL BRACING	
PROPRIETOR CITY OF WINNIPEG	
PURCHASER DOMINION BRIDGE CO. WINNIPEG	
DRAWN JPH April 30/55	
CHECKED J. DESJARDINS May 13/55	
APPROVED	9A
SCALE = 1 FOOT	Vault No.
DEPT. GAVIN	CONT. W6217
SHIPPING BILL	
MADE IN CANADA	

REVISION	DATE	BY	DESCRIPTION
A	5/23	HMJ	Running Dimensions added