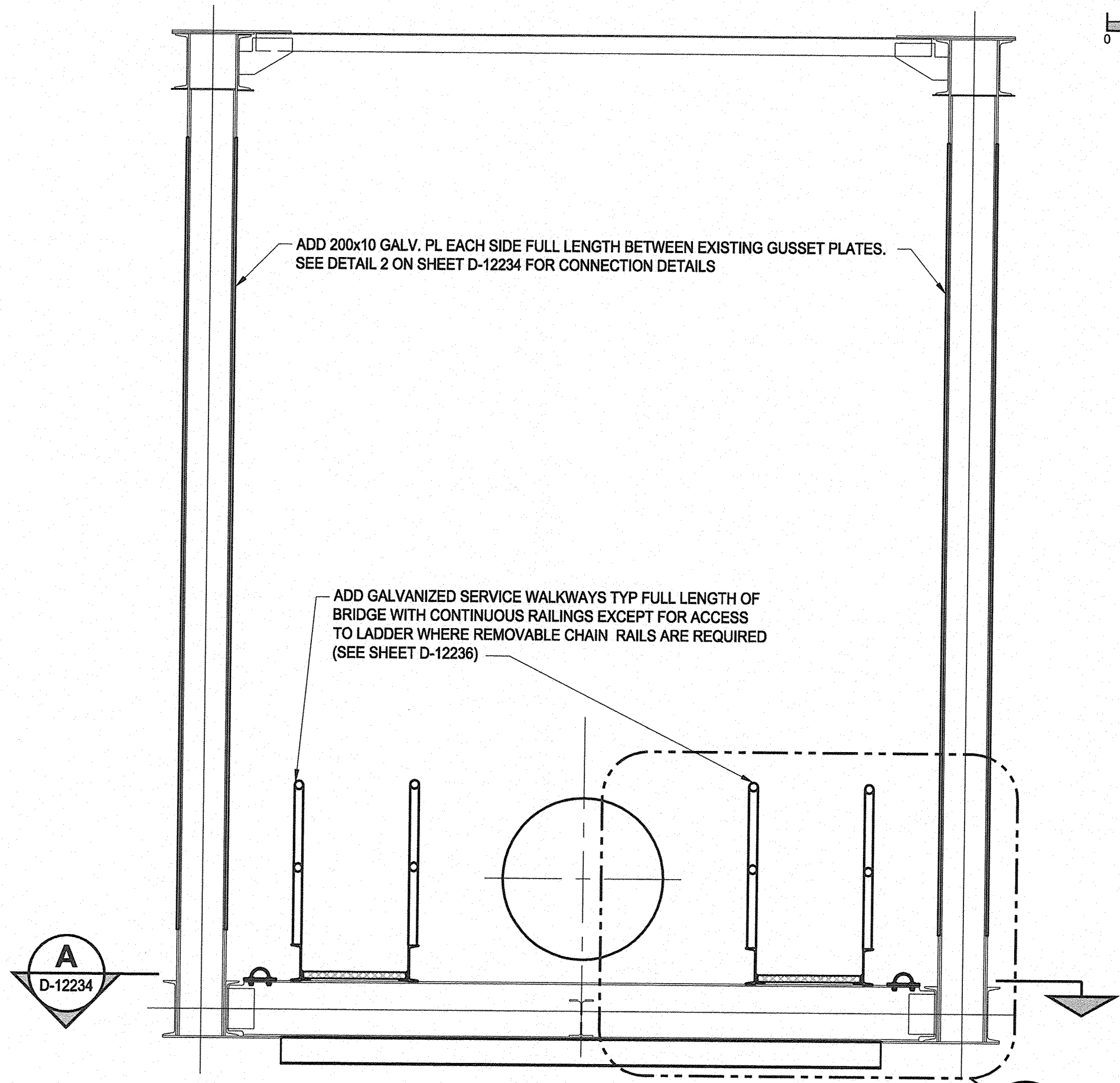
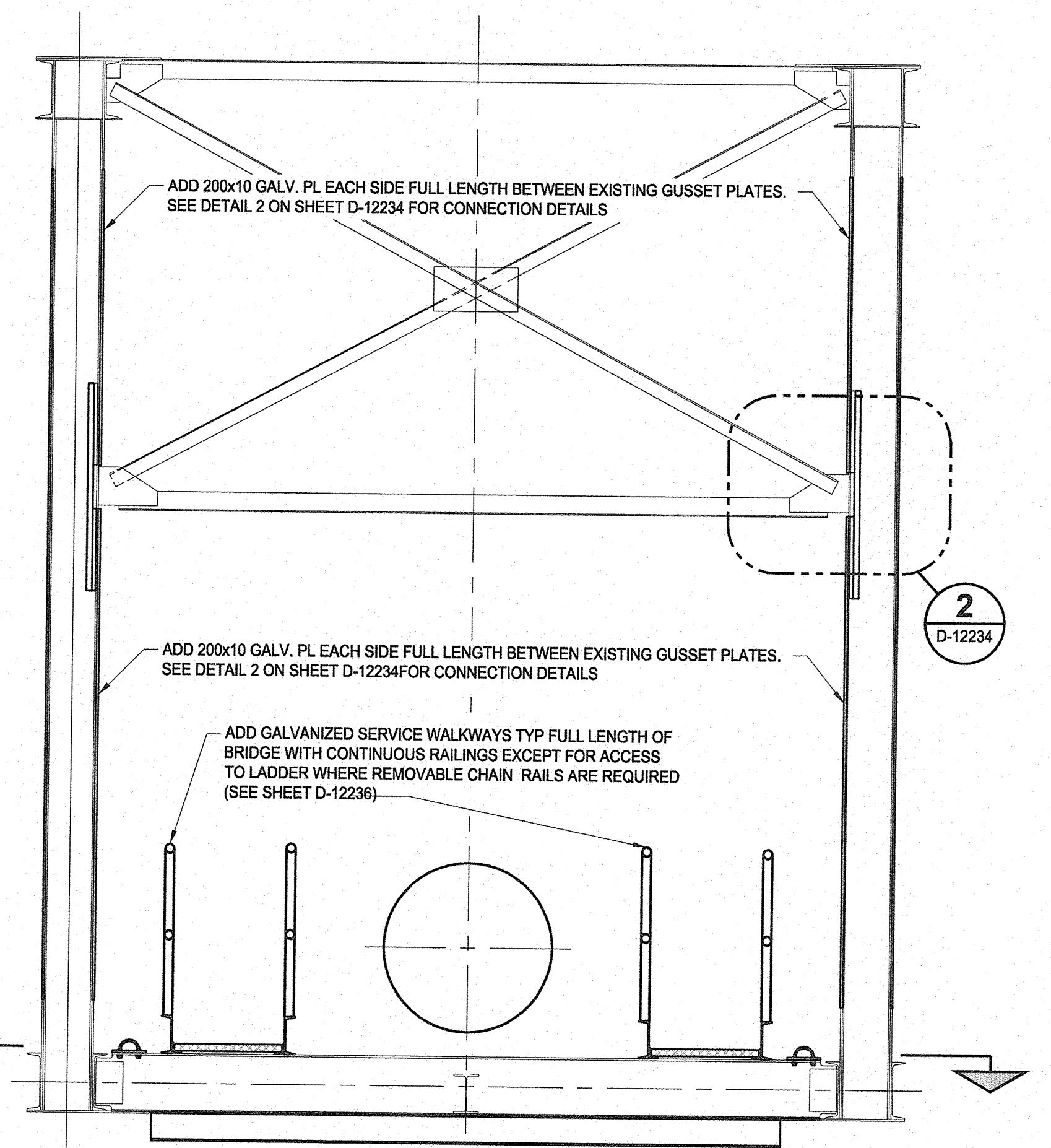
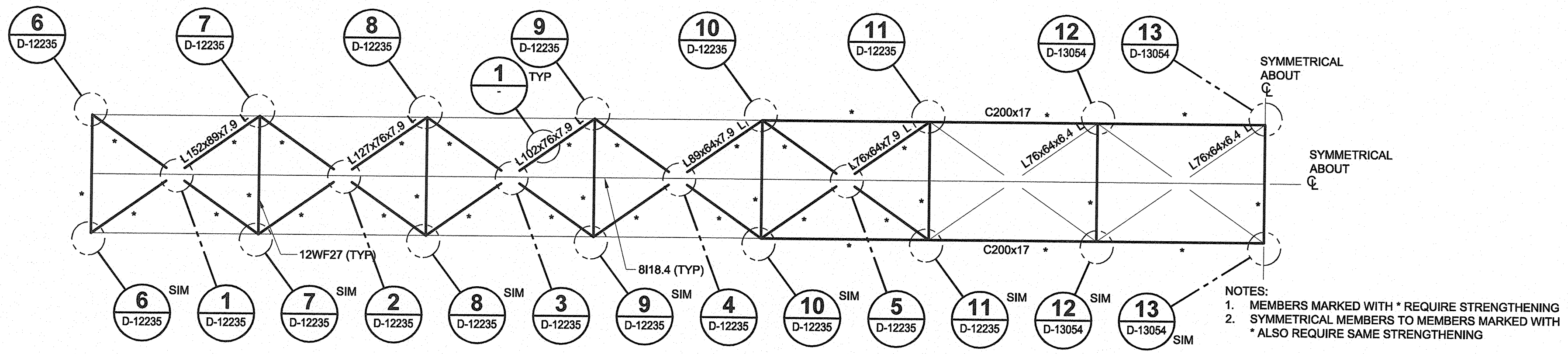
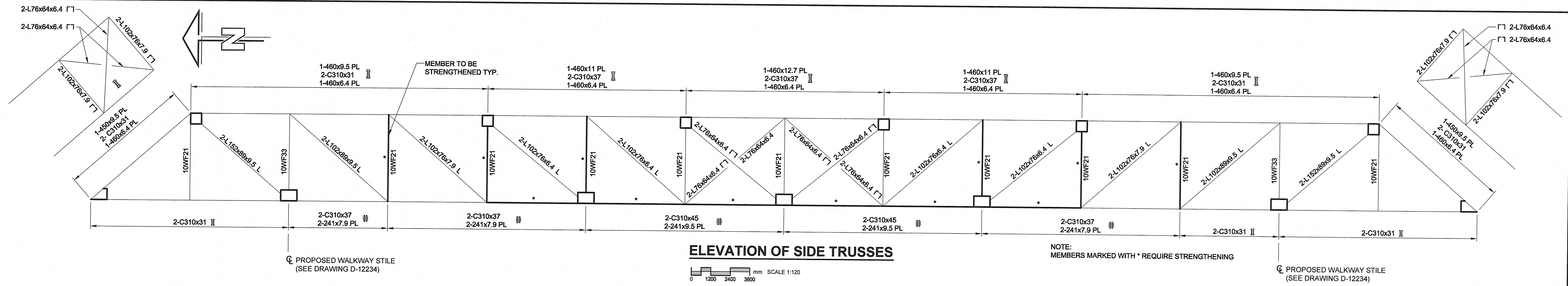
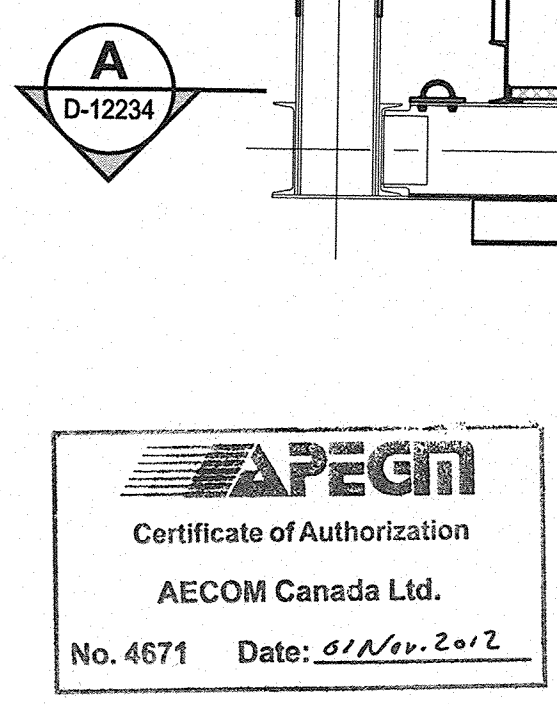
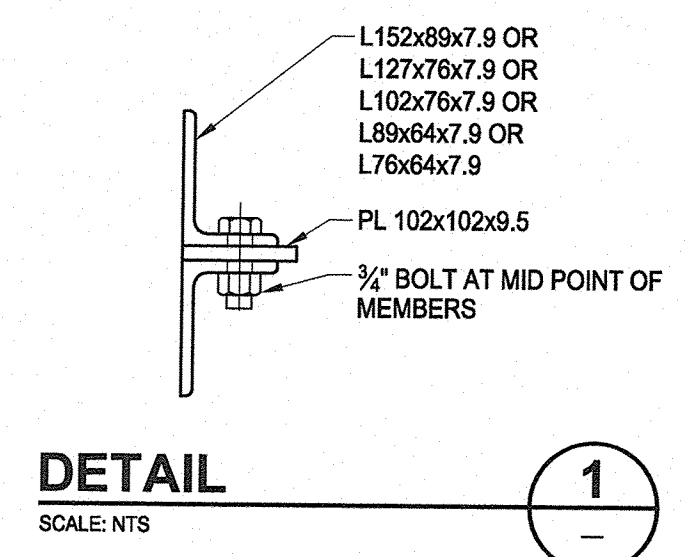


D SIZE 22" x 34" (559mm x 864mm)
 PLOT: 10/31/2012 9:44:56 AM
 AECOM REVIEW / DRFT CHK
 AECOM FILE NAME: D265-230-02_01-S-4002_RX.dwg Saved By: cameronk1

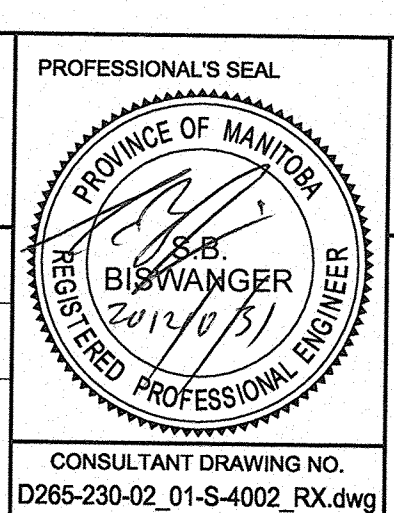


- GENERAL NOTES:**
- ALL STEEL SHALL CONFORM TO CSA-G40.21-04, GRADE 350 WT. CATEGORY 3 AND SHALL BE GALVANIZED TO CSA G164-M92 "HOT DIP GALVANIZING OF IRREGULARLY SHAPED ARTICLES" AFTER FABRICATION.
 - PREPARE SURFACES AND ZINC METALIZE ALL STEEL MEMBERS EXCEPT NEW MEMBERS THAT ARE ALREADY HOT-DIPPED GALVANIZED.
 - TOUCH UP ANY DAMAGED GALVANIZING OR METALIZING WITH ZINGA, ZINC METALIZING OR ACCEPTED EQUAL.
 - PERMANENT BOLTS SHALL BE A325 TYPE 1 AND SHALL BE GALVANIZED. BOLT THREADS SHALL BE EXCLUDED FROM THE SHEAR PLANES OF ANY SURFACES.
 - ALL WELDING SHALL BE IN ACCORDANCE WITH CSA W59-03 "WELDED STEEL CONSTRUCTION".
 - FABRICATORS SHALL BE CERTIFIED IN ACCORDANCE WITH CSA W47.1-03 "CERTIFICATION OF COMPANIES FOR FUSION WELDING OF STEEL STRUCTURES".
 - THE CONTACT SURFACES OF BOLTED PARTS SHALL BE HOT DIP GALVANIZED OR ZINC METALIZED AND THEN HAND WIRE BRUSHED.
 - OBTAIN CONTRACT ADMINISTRATOR'S APPROVAL PRIOR TO MAKING ANY MEMBER SUBSTITUTIONS OR CONNECTION DETAIL CHANGES.
 - WHERE EXISTING RIVETS ARE TO BE REMOVED, THEY SHALL BE REMOVED BY MECHANICAL MEANS ONLY. NO HEAT SHALL BE APPLIED TO THE RIVETS UNLESS APPROVED BY THE CONTRACT ADMINISTRATOR
 - ACCESS AND LAY DOWN AREA TO BE APPROVED BY CONTACT ADMINISTRATOR
 - ALL DIMENSIONS SHOWN ON THESE DRAWINGS ARE BASED ON AVAILABLE INFORMATION. CONTRACTOR SHALL FIELD MEASURE AND VERIFY ALL DETAILS AND DIMENSIONS. THE CONTRACTOR SHALL REPORT ANY DISCREPANCIES TO THE CONTRACTOR ADMINISTRATOR PRIOR TO COMMENCING WORK



LOCATION APPROVED UNDERGROUND STRUCTURES		DATE	COMMITTEE
SUPR. U/G STRUCTURES			
NOTE: LOCATION OF UNDERGROUND STRUCTURES AS SHOWN ARE BASED ON THE BEST INFORMATION AVAILABLE. BUT NO GUARANTEE IS GIVEN THAT ALL EXISTING UTILITIES ARE SHOWN OR THAT THE GIVEN LOCATIONS ARE EXACT. CONFIRMATION OF EXISTENCE AND EXACT LOCATION OF ALL SERVICES MUST BE OBTAINED FROM THE INDIVIDUAL UTILITIES BEFORE PROCEEDING WITH CONSTRUCTION.			
NO.	REVISIONS	DATE	BY
1	RE-ISSUED FOR CONSTRUCTION	12/10/31	KC
0	ISSUED FOR CONSTRUCTION	11/05/09	KC

AECOM		PROFESSIONAL'S SEAL	
DESIGNED BY	FTI/ARB	CHECKED BY	SBB/KC
DRAWN BY	DJH	APPROVED BY	EBL
HOR. SCALE	AS NOTED	RELEASED FOR CONSTRUCTION	
VERT. SCALE	AS NOTED	DATE	



BID OPPORTUNITY NO. 830-2012

THE CITY OF WINNIPEG WATER AND WASTE DEPARTMENT

REHABILITATION / REPLACEMENT OF THE MID TOWN FEEDERMAIN AT THE ASSINIBOINE RIVER

STRUCTURAL

LAYOUT FOR BRIDGE STRENGTHENING / MODIFICATIONS

SHEET 7 OF 19

CITY DRAWING NUMBER

D-12233

REV 1