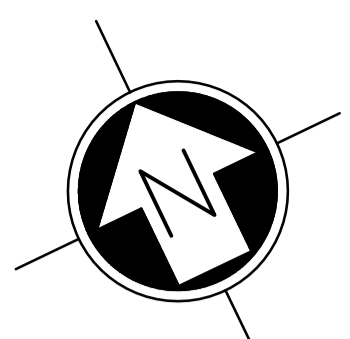
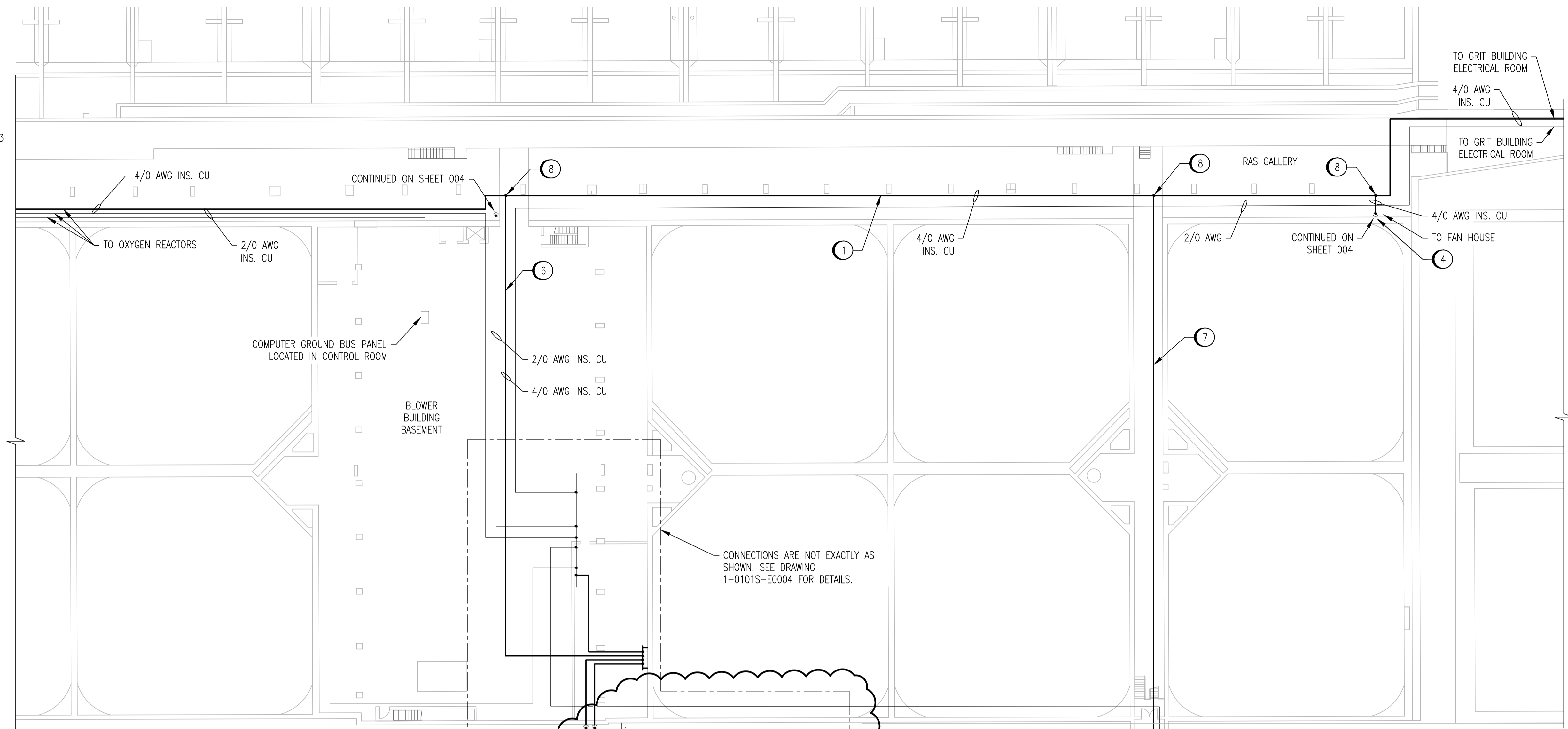


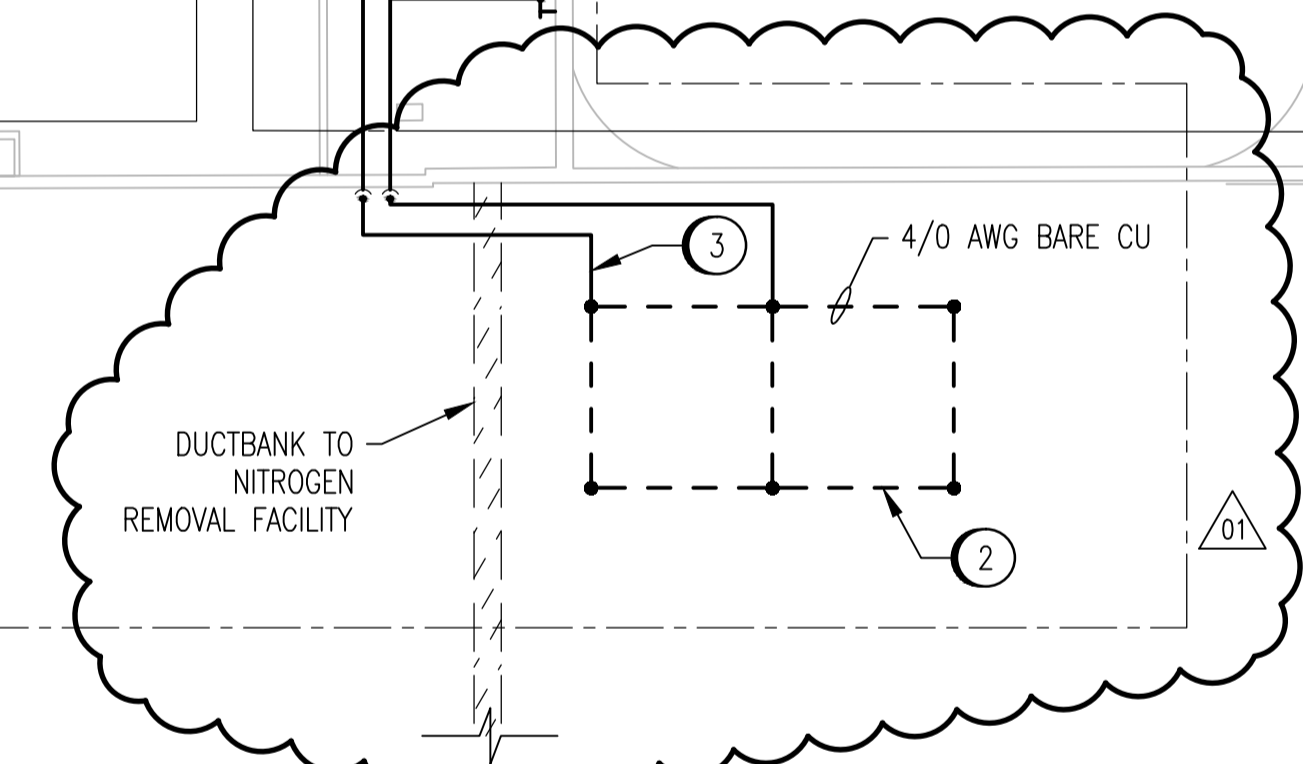
CONTINUED ON SHEET 003

CONTINUED ON SHEET 002

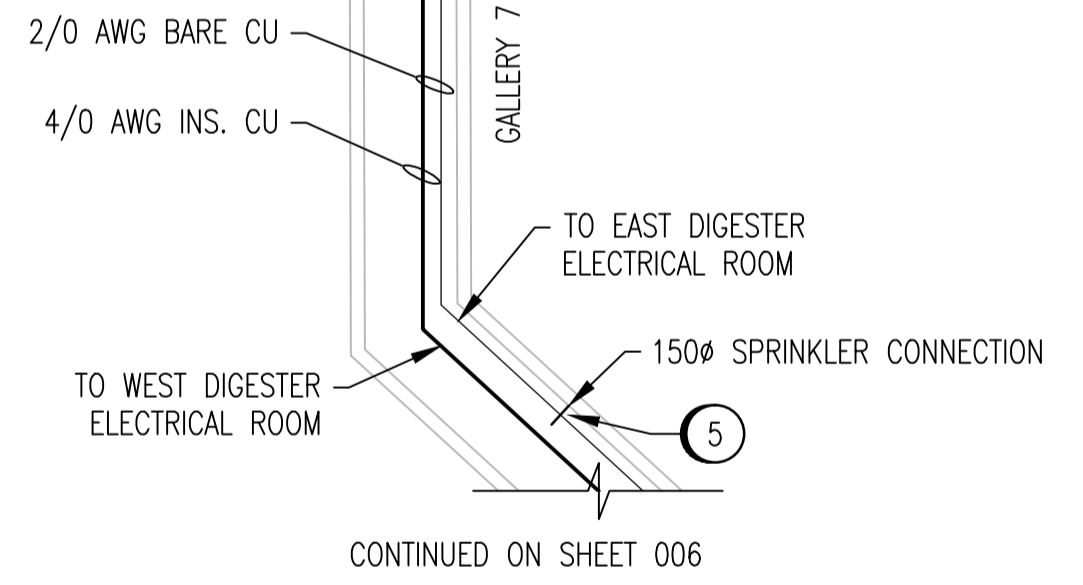


- CONSTRUCTION NOTES**
- 1 PROVIDE 4/0 AWG CONDUCTOR FROM OXYGEN REACTOR ELECTRICAL ROOM TO GRIT ELECTRICAL ROOM. LOCATE IN EXISTING CABLE TRAY. INSTALL IN 27mm PVC CONDUIT WHERE NOT IN TRAY.
 - 2 PROVIDE GROUND ELECTRODE AS SHOWN. LOCATE ALL EXISTING SERVICES IN AREA PRIOR TO INSTALLATION OF ELECTRODE.
 - 3 PROVIDE 4/0 AWG CONDUCTORS FROM GROUND ELECTRODE TO GROUND BUS BAR.
 - 4 PROVIDE 4/0 AWG CONDUCTOR FROM FAN HOUSE TO RAS GALLERY. CORE DRILL HOLE ADJACENT TO EXISTING PENETRATIONS. INSTALL IN 27mm PVC CONDUIT. LOCATE REINFORCING STEEL PRIOR TO DRILLING. ENSURE THAT ALL SEWAGE CONDUITS (CONCRETE DUCTS) ARE AVOIDED. DISCUSS WITH CONTRACT ADMINISTRATOR TO ENSURE ALL REQUIREMENTS ARE UNDERSTOOD.
 - 5 PROVIDE 2/0 AWG CONDUCTOR TO BOND PIPE ENTERING BUILDING TO GROUND. CONNECT TO EXISTING BARE GROUND CONDUCTOR. USE APPROVED PIPE CLAMP OR EXOTHERMIC WELD.
 - 6 PROVIDE 4/0 AWG CONDUCTOR FROM BLOWER BUILDING TO RAS GALLERY. LOCATE IN EXISTING CABLE TRAY. INSTALL IN 27mm PVC CONDUIT WHERE NOT IN TRAY.
 - 7 PROVIDE 4/0 AWG CONDUCTOR FROM DIGESTER WEST ELECTRICAL ROOM TO RAS GALLERY. LOCATE IN EXISTING CABLE TRAY. INSTALL IN 27mm PVC CONDUIT WHERE NOT IN TRAY.
 - 8 INSTALL TEE CONNECTION IN CABLE TRAY.

TO CRYOGENIC OXYGEN PLANT



SECONDARY CLARIFIERS - LOWER LEVEL - SOUTH
SCALE: 1 : 250

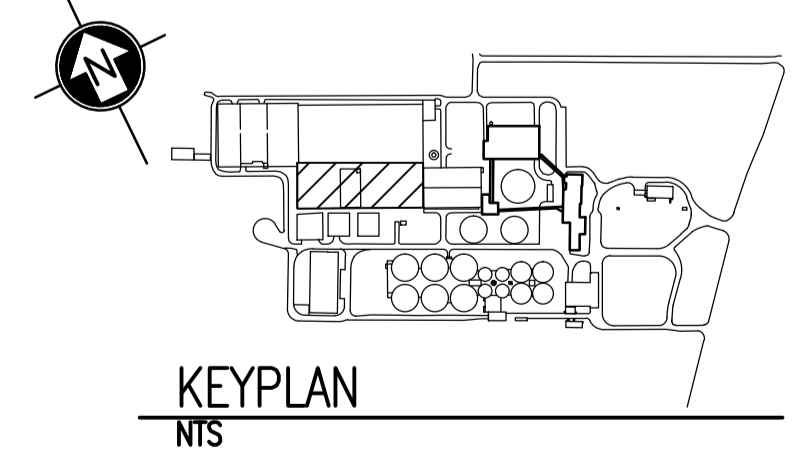
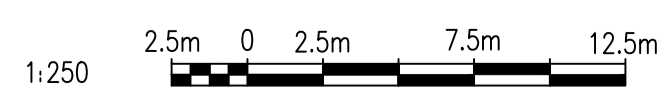


LEGEND:

- EXISTING BURIED SERVICE
- EXISTING CONDUCTOR
- NEW CONDUCTOR
- - - CONDUCTOR ABOVE ELEVATION SHOWN
- GROUND ROD
- CONNECTION
- ELEVATION CHANGE

NOTES:

1. THE ELEVATION OF THE GROUNDING CONDUCTORS AND ELECTRODES VARIES AND IS SHOWN ON A SINGLE LEVEL TO EASE THE UNDERSTANDING OF HOW THE GROUNDING SYSTEM IS INTERCONNECTED. SEE LEGEND FOR LINETYPES OF CONDUCTORS AT DIFFERENT ELEVATIONS.
2. THE LOCATION AND ROUTING OF EXISTING GROUNDING CONDUCTORS IS APPROXIMATE.
3. GROUNDING OF THE NITROGEN REMOVAL BUILDING AND OXYGEN PLANT IS NOT SHOWN ON THIS DRAWING.



LAST SAVE: 2012/11/22 - 1:39pm
PATH: M:\113312\ENGR\47ELE\DO - General DWG\1-0101A-E001-001-01.dwg

1-0101A-E0010	GROUNDING INSTALLATION DETAILS
DRAWING NUMBER	REFERENCE DRAWINGS

NO.	REVISIONS	DATE	DESIGN	CHECK
01	MODIFIED ELECTRODE LOCATION	2012/11/21	TMC	CJR
00	ISSUED FOR TENDER, BID OPP. 845-2012	2012/10/30	TMC	CJR

		SNC-LAVALIN INC. 148 Nature Park Way Winnipeg, MB, Canada R3P 0X7 204-786-8080	ENGINEER'S SEAL ORIGINAL DRAWING SEALED BY: T. M. CHURCH SNC-LAVALIN MEMBER #32682 2012/10/31 REV. 00
DESIGNED BY:	T. CHURCH	CHECKED BY:	C. REIMER
DRAWN BY:	S. COATES	APPROVED BY:	C. REIMER
SCALE:	1:250	RELEASED FOR CONSTRUCTION BY:	B. STATION
DATE:	2009/11/20	DATE:	2012/10/31
CONSULTANT NO.:	113312-0000-47DD-0005		

THE CITY OF WINNIPEG WATER AND WASTE DEPARTMENT			
NORTH END WATER POLLUTION CONTROL CENTRE GROUNDING UPGRADES SITE PLAN GROUNDING CONDUCTOR ROUTING			
CITY DRAWING NUMBER	SHEET	REV.	SIZE
1-0101A-E0011	005	01	A1