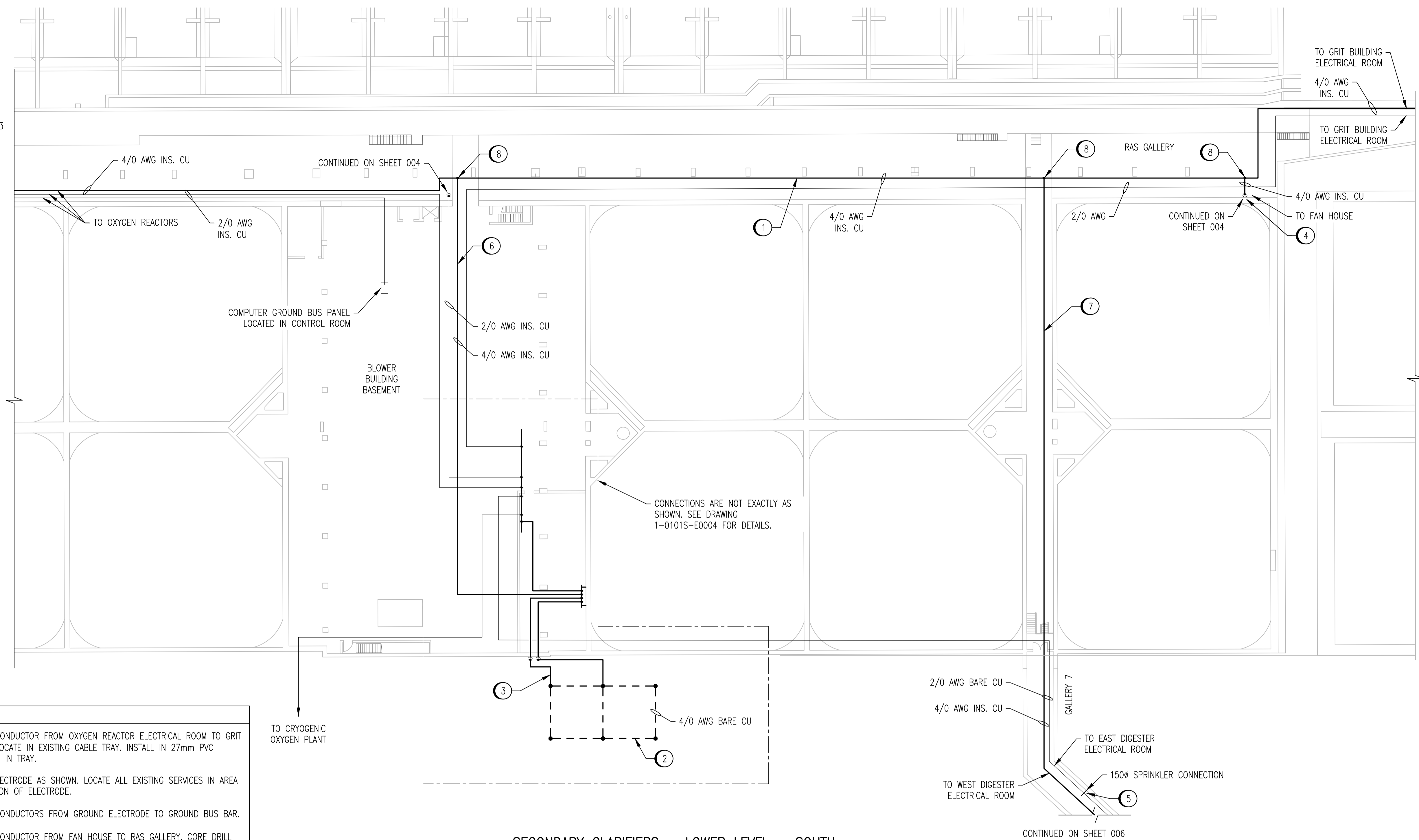


CONTINUED ON SHEET 003

CONTINUED ON SHEET 002



- CONSTRUCTION NOTES**
- 1 PROVIDE 4/0 AWG CONDUCTOR FROM OXYGEN REACTOR ELECTRICAL ROOM TO GRIT ELECTRICAL ROOM. LOCATE IN EXISTING CABLE TRAY. INSTALL IN 27mm PVC CONDUIT WHERE NOT IN TRAY.
 - 2 PROVIDE GROUND ELECTRODE AS SHOWN. LOCATE ALL EXISTING SERVICES IN AREA PRIOR TO INSTALLATION OF ELECTRODE.
 - 3 PROVIDE 4/0 AWG CONDUCTORS FROM GROUND ELECTRODE TO GROUND BUS BAR.
 - 4 PROVIDE 4/0 AWG CONDUCTOR FROM FAN HOUSE TO RAS GALLERY. CORE DRILL HOLE ADJACENT TO EXISTING PENETRATIONS. INSTALL IN 27mm PVC CONDUIT. LOCATE REINFORCING STEEL PRIOR TO DRILLING. ENSURE THAT ALL SEWAGE CONDUITS (CONCRETE DUCTS) ARE AVOIDED. DISCUSS WITH CONTRACT ADMINISTRATOR TO ENSURE ALL REQUIREMENTS ARE UNDERSTOOD.
 - 5 PROVIDE 2/0 AWG CONDUCTOR TO BOND PIPE ENTERING BUILDING TO GROUND. CONNECT TO EXISTING BARE GROUND CONDUCTOR. USE APPROVED PIPE CLAMP OR EXOTHERMIC WELD.
 - 6 PROVIDE 4/0 AWG CONDUCTOR FROM BLOWER BUILDING TO RAS GALLERY. LOCATE IN EXISTING CABLE TRAY. INSTALL IN 27mm PVC CONDUIT WHERE NOT IN TRAY.
 - 7 PROVIDE 4/0 AWG CONDUCTOR FROM DIGESTER WEST ELECTRICAL ROOM TO RAS GALLERY. LOCATE IN EXISTING CABLE TRAY. INSTALL IN 27mm PVC CONDUIT WHERE NOT IN TRAY.
 - 8 INSTALL TEE CONNECTION IN CABLE TRAY.

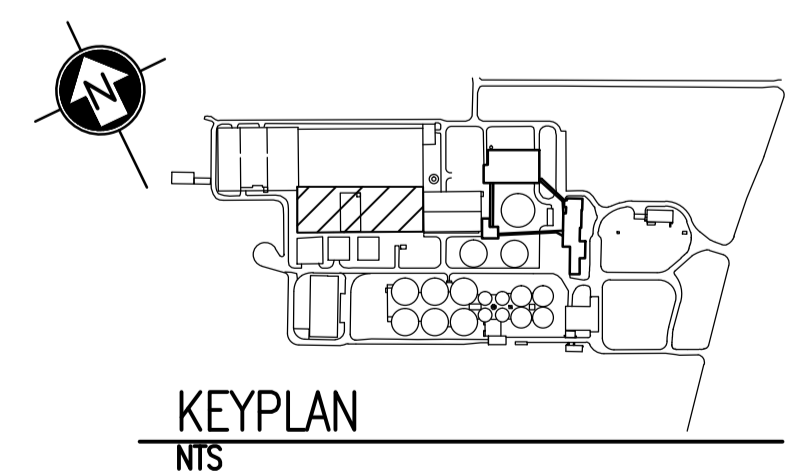
TO CRYOGENIC OXYGEN PLANT

CONNECTIONS ARE NOT EXACTLY AS SHOWN. SEE DRAWING 1-0101S-E0004 FOR DETAILS.

SECONDARY CLARIFIERS - LOWER LEVEL - SOUTH
SCALE: 1 : 250

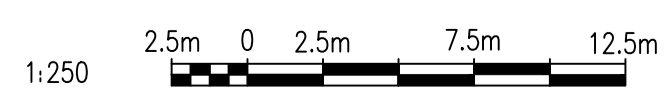
LEGEND:

- EXISTING CONDUCTOR
- NEW CONDUCTOR
- - - CONDUCTOR ABOVE ELEVATION SHOWN
- GROUND ROD
- CONNECTION
- ELEVATION CHANGE



- NOTES:**
1. THE ELEVATION OF THE GROUNDING CONDUCTORS AND ELECTRODES VARIES AND IS SHOWN ON A SINGLE LEVEL TO EASE THE UNDERSTANDING OF HOW THE GROUNDING SYSTEM IS INTERCONNECTED. SEE LEGEND FOR LINETYPES OF CONDUCTORS AT DIFFERENT ELEVATIONS.
 2. THE LOCATION AND ROUTING OF EXISTING GROUNDING CONDUCTORS IS APPROXIMATE.
 3. GROUNDING OF THE NITROGEN REMOVAL BUILDING AND OXYGEN PLANT IS NOT SHOWN ON THIS DRAWING.

APEGM
Certificate of Authorization
SNC-Lavalin Inc.
No. 4489



NO.	REVISIONS	DATE	DESIGN	CHECK
00	ISSUED FOR TENDER, BID OPP. 845-2012	2012/10/30	TMC	CJR

SNC-LAVALIN INC.
148 Nature Park Way
Winnipeg, MB, Canada R3P 0X7
204-786-8080

DESIGNED BY: I. CHURCH
DRAWN BY: S. COATES
SCALE: 1:250
DATE: 2009/11/20
CONSULTANT NO.: 113312-0000-47DD-0005

CHECKED BY: C. REIMER
APPROVED BY: C. REIMER
RELEASED FOR CONSTRUCTION BY: B. STATION
DATE: 2012/10/31

ENGINEER'S SEAL

THE CITY OF WINNIPEG
WATER AND WASTE DEPARTMENT

NORTH END WATER POLLUTION CONTROL CENTRE
GROUNDING UPGRADES
SITE PLAN
GROUNDING CONDUCTOR ROUTING

CITY DRAWING NUMBER: 1-0101A-E0011
SHEET: 005
REV.: 00
SIZE: A1