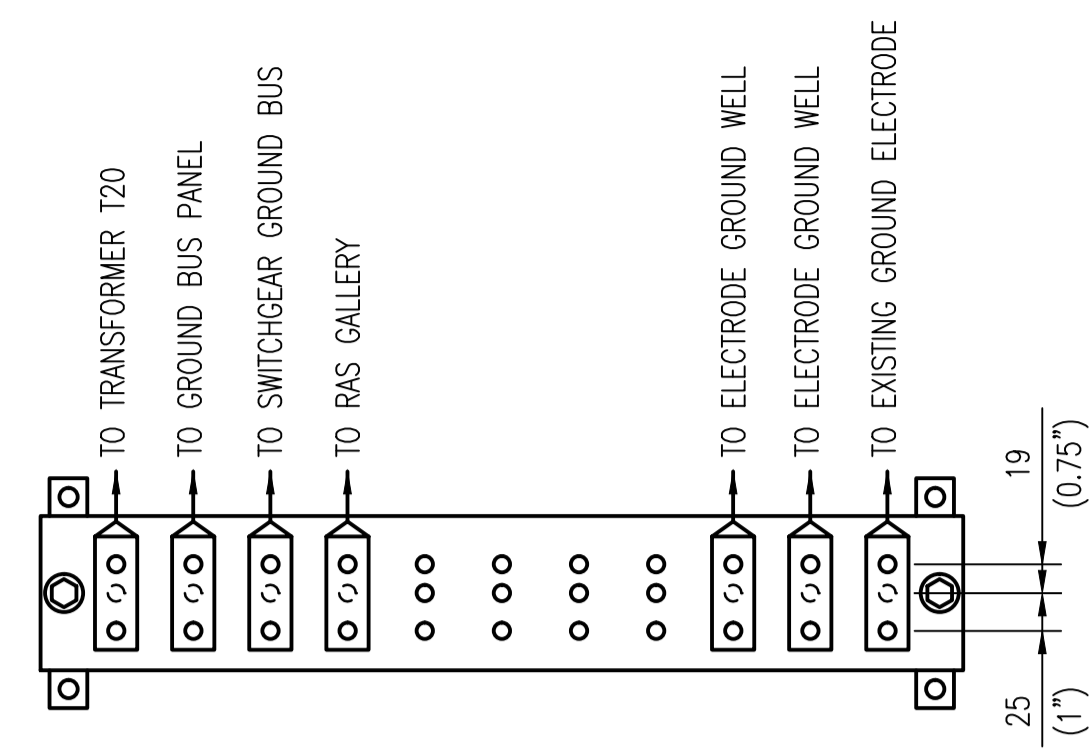
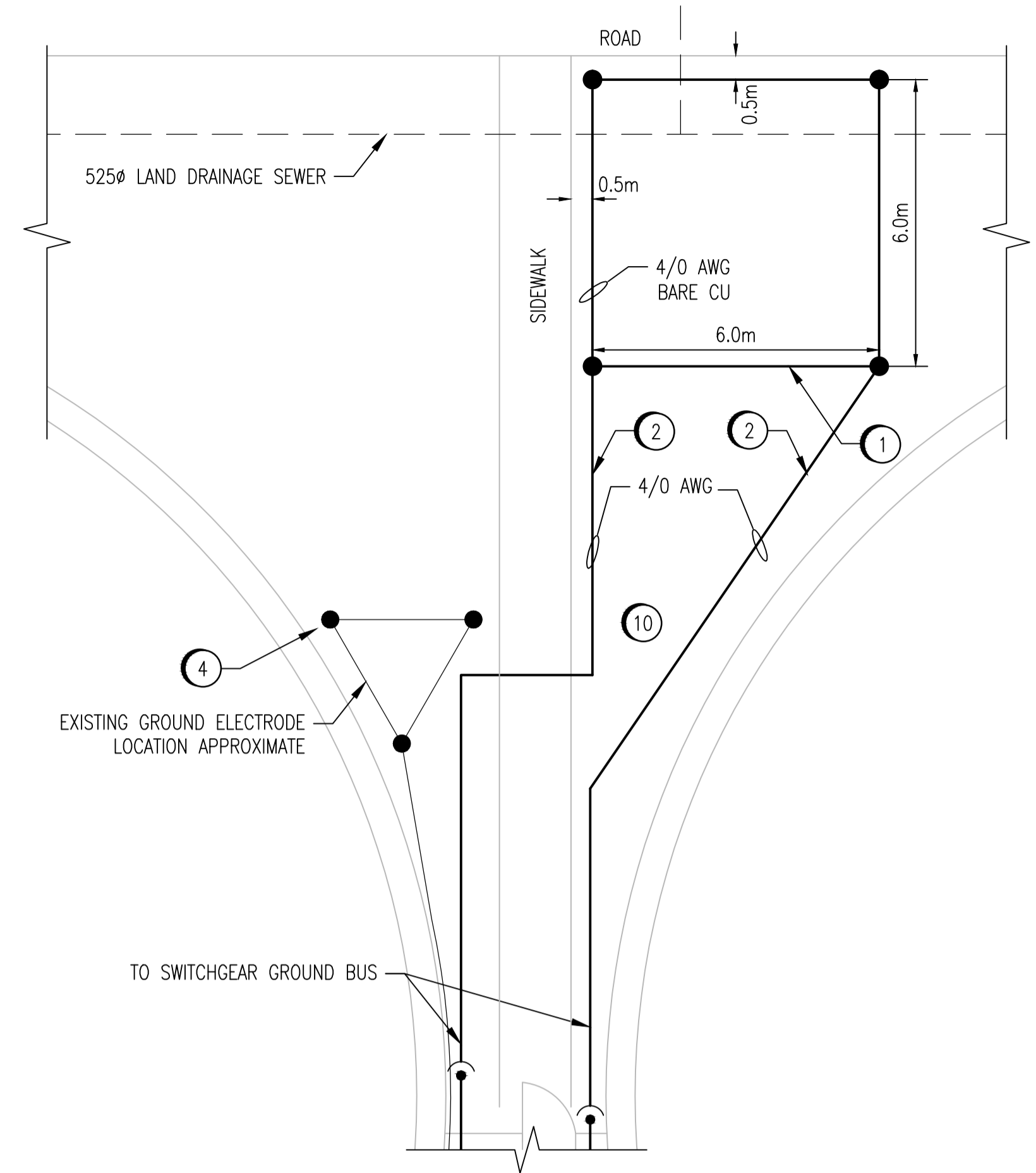


DIGESTER WEST ELECTRICAL ROOM PLAN - LOWER LEVEL
SCALE: 1 : 50



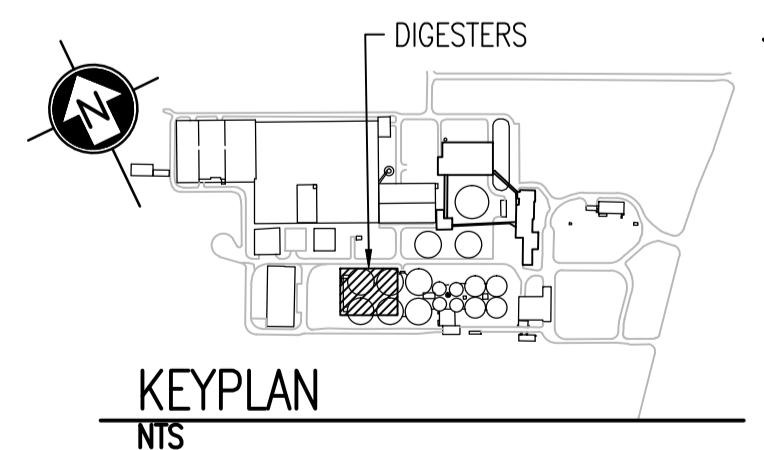
DETAIL - BUS BAR
SCALE: 1 : 5



GROUND ELECTRODE DETAIL - MAIN LEVEL
SCALE: 1 : 100

- CONSTRUCTION NOTES:**
- 1 PROVIDE FOUR ROD GROUND ELECTRODE AS SHOWN. LOCATE ALL EXISTING UNDERGROUND SERVICES IN AREA PRIOR TO INSTALLATION OF ELECTRODE. SEE DETAILS ON DRAWING 1-0101A-E0010. PROVIDE A GROUND WELL AT EACH ROD LOCATION.
 - 2 PROVIDE 4/0 AWG CONDUCTOR FROM GROUND ELECTRODE TO GROUND BUS BAR. CORE DRILL THROUGH WALL BELOW GRADE. EXCAVATE UNDER SIDEWALK AS NEEDED.
 - 3 PROVIDE 4/0 AWG INSULATED GROUND CONDUCTOR FROM WEST ELECTRICAL ROOM SWITCHGEAR TO GROUND CONDUCTOR IN RAS GALLERY.
 - 4 DETECT LOCATION OF EXISTING GROUND ELECTRODE AND CONDUCTORS AND MARK ON AS-BUILT DRAWINGS.
 - 5 CONNECT WIRE FROM EXISTING GROUND ELECTRODE TO NEW BUS BAR.
 - 6 PROVIDE 4/0 AWG INSULATED GROUND CONDUCTOR FROM TRANSFORMER T20 TO GROUND BUS BAR.
 - 7 PROVIDE GROUND BUS BAR AT HEIGHT OF 400mm ABOVE FINISHED FLOOR.
 - 8 ATTACH GROUND BUS PANEL TO NEW BUS BAR WITH 4/0 AWG INSULATED GROUND CONDUCTOR.
 - 9 PROVIDE 4/0 AWG INSULATED GROUND CONDUCTOR FROM BUS BAR TO SWITCH GEAR GROUND BUS BAR.
 - 10 RESTORE THE SIDEWALK AND ALL GRASSED AND PAVEMENT SURFACES AS PER THE SPECIFICATIONS.

- LEGEND:**
- - - - - EXISTING BURIED SERVICE
 - - - - - EXISTING CONDUCTOR
 - NEW CONDUCTOR
 - GROUND ROD
 - CONNECTION
 - ELEVATION CHANGE



NOTES:

1. THE ELEVATION OF THE GROUNDING CONDUCTORS AND ELECTRODES VARIES AND IS SHOWN ON A SINGLE LEVEL TO EASE THE UNDERSTANDING OF HOW THE GROUNDING SYSTEM IS INTERCONNECTED.
2. THE LOCATION AND ROUTING OF EXISTING GROUNDING CONDUCTORS IS APPROXIMATE.
3. THIS DRAWING SUPERSEDES PART OF NEP-1309.



NO.	REVISIONS	DATE	DESIGN	CHECK
00	ISSUED FOR TENDER, BID OPP. 845-2012	2012/10/30	TMC	CJR

<p>SNC-LAVALIN INC. 148 Nature Park Way Winnipeg, MB, Canada R3P 0X7 204-786-8080</p>		<p>ENGINEER'S SEAL</p>
DESIGNED BY: I. CHURCH	CHECKED BY: C. REIMER	<p>BY: B. STATION DATE: 2012/10/31</p>
DRAWN BY: S. COATES	APPROVED BY: C. REIMER	
SCALE: AS SHOWN	RELEASED FOR CONSTRUCTION	CONSULTANT NO.: 113312-0000-47DD-0014
DATE: 2009/11/27	DATE: 2012/10/31	

THE CITY OF WINNIPEG
WATER AND WASTE DEPARTMENT

NORTH END WATER POLLUTION CONTROL CENTRE
GROUNDING UPGRADES
PLAN LAYOUT
GROUNDING
DIGESTER WEST ELECTRICAL ROOM

CITY DRAWING NUMBER: 1-0101D-E0009
SHEET REV. SIZE: 001 00 A1

1-0101A-E0010	GROUNDING INSTALLATION DETAILS
1-0101A-E0011	SITE PLAN - GROUNDING CONDUCTOR ROUTING
DRAWING NUMBER	REFERENCE DRAWINGS