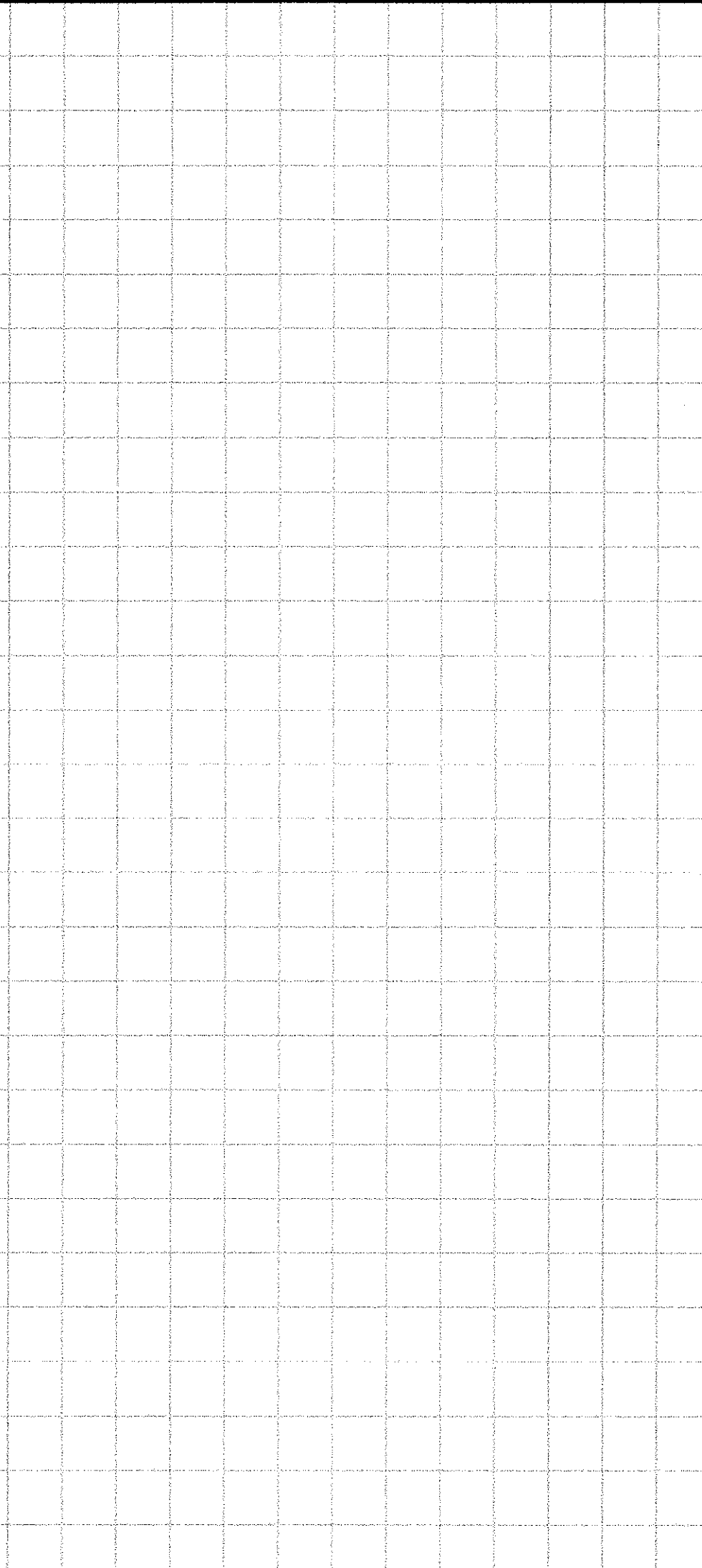
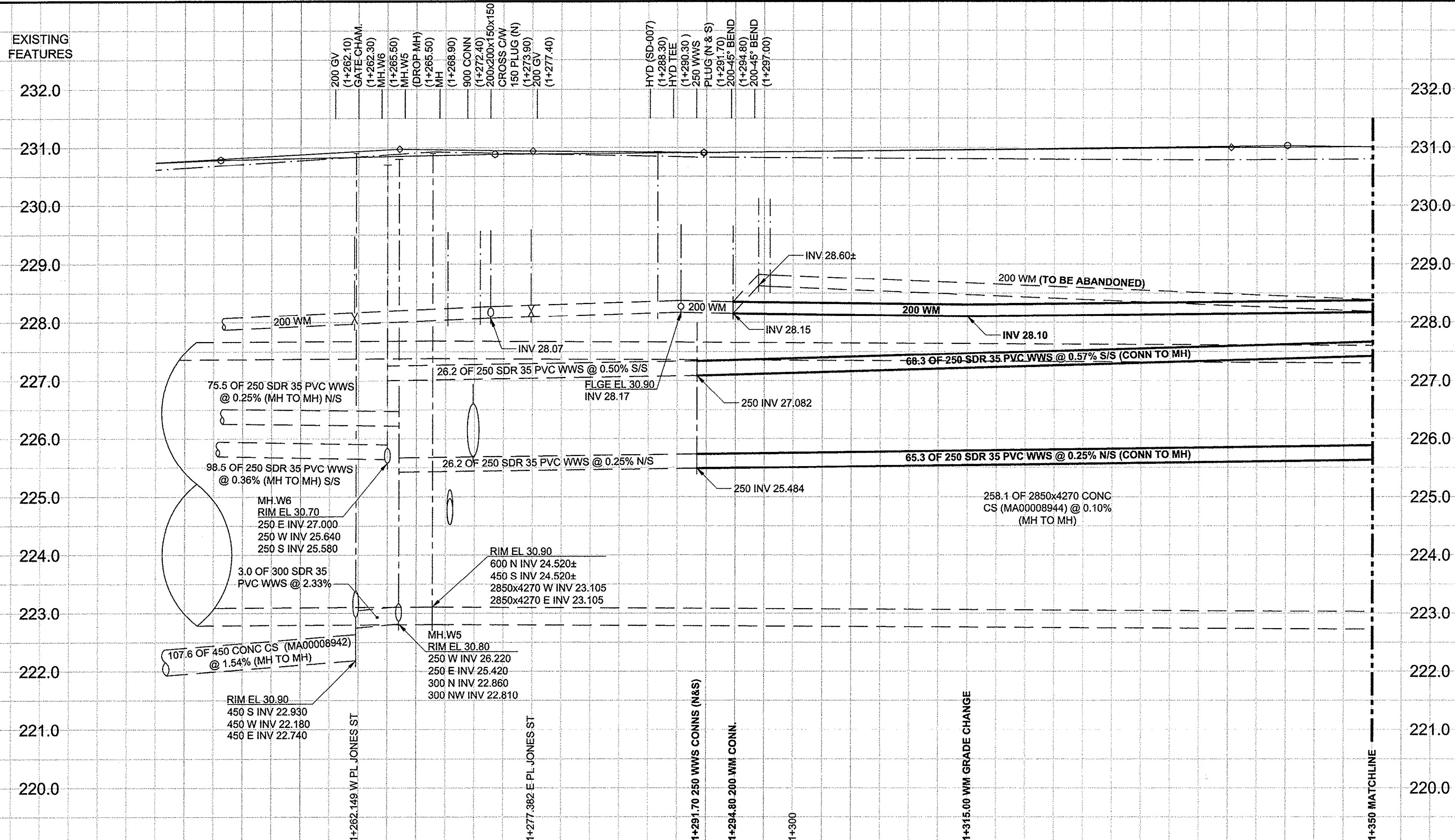


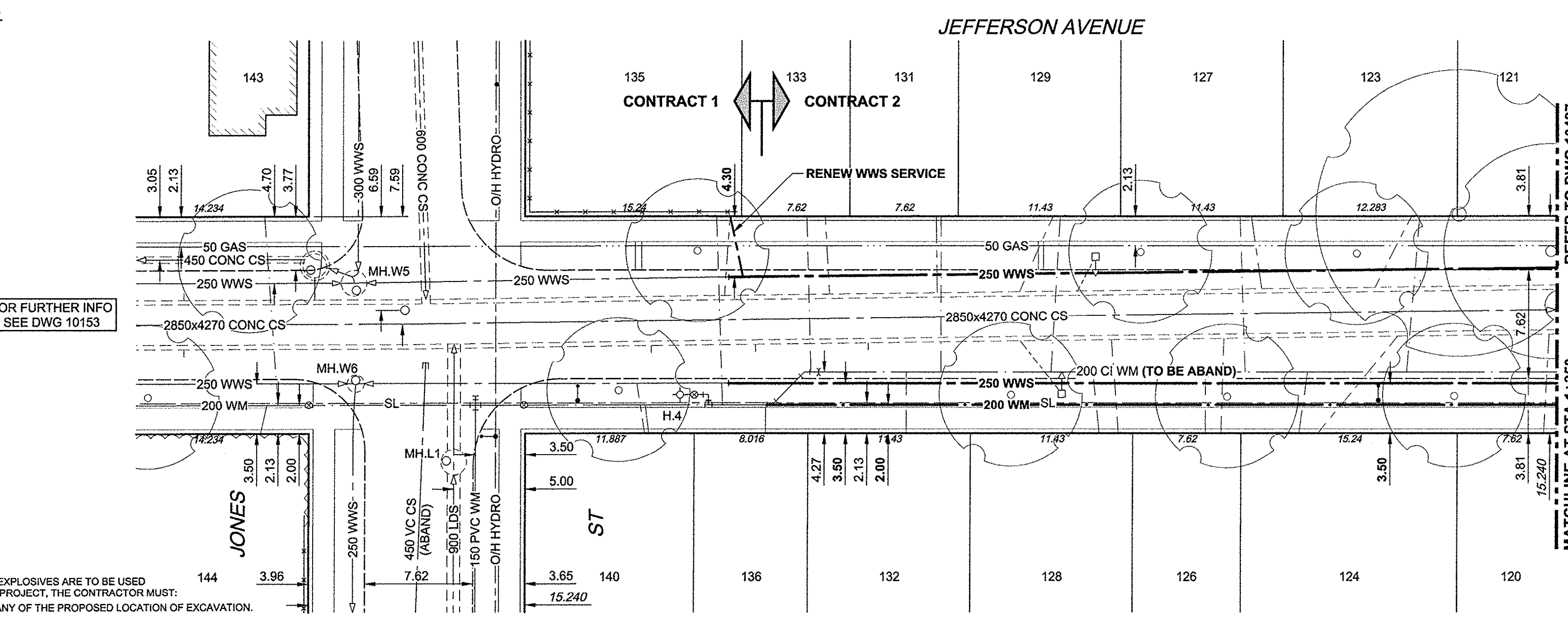
D SIZE 22" x 34" (559mm x 864mm)



WATER SERVICE INFORMATION					
ADDRESS	DISTANCE PROPERTY	SIZE(mm) & TYPE	SHORT & LONG MEASUREMENT	CORPORATION LOCATION	REMARKS
120 JEFFERSON	0.50	20 COPPER	1.2m WEL OF HOUSE	0.3m E OF S/C	
121 JEFFERSON	0.30	16 LEAD	1.9m WEL OF HOUSE	50.1m W 1ST HYD W SCOTIA	OPP SC
123 JEFFERSON	0.30	20 COPPER	1.2m WEL OF HOUSE	62.9m EEL OF JONES	0.9m W OF S/C
124 JEFFERSON	0.30	20 COPPER	3.8m WEL HOUSE	54.4m EEL OF JONES	0.6m E OF S/C
126 JEFFERSON	0.15	16 LEAD	1.9m WEL OF HOUSE	47.8m EEL OF JONES	OPP SC
127 JEFFERSON	0.15	16 LEAD	0.9m WEL OF HOUSE	50.2m EEL OF JONES	0.3m E OF S/C
128 JEFFERSON	0.30	20 COPPER	0.3m WEL OF HOUSE	40.3m EEL OF JONES	0.4m W OF S/C
129 JEFFERSON	0.50	12 LEAD	2.8m WEL OF HOUSE	37.8m EEL OF JONES	0.6m W OF S/C
131 JEFFERSON	0.15	16 LEAD	0.9m WEL OF HOUSE	29.2m EEL OF JONES ST	OPP S/C
132 JEFFERSON	0.30	12 COPPER	3m WEL OF HOUSE	26.8m EEL OF JONES	OPP SC
133 JEFFERSON	0.15	16 LEAD	2.1m WEL OF HOUSE	19.8m EEL OF JONES	0.3m E OF S/C
135 JEFFERSON	0.30	20 COPPER	0.95m WEHL	13.47m EEL JONES	0.34m E OF SC
136 JEFFERSON	0.15	16 LEAD	1.8m WEL OF HOUSE	16.8m EEL OF JONES	OPP S/C
140 JEFFERSON	PROPERTY	20 COPPER	2.10m WEHL	8.7m EEL JONES	0.4m W OF SC
143 JEFFERSON		20 COPPER	3.3m WEHL	3.1m WWL JONES	0.85m E OF SC
144 JEFFERSON	0.50	20 COPPER	3.3m EWHL	3.4m WWL JONES	0.7m E OF SC

SEWER SERVICE INFORMATION			
ADDRESS	PL TIE (SHORT/LONG)	JUNCTION TIE	REMARKS
120 JEFFERSON		177.6m W OF MH AT SCOTIA	
121 JEFFERSON			NO INFO
123 JEFFERSON		189.8m W OF MH AT SCOTIA	
124 JEFFERSON			NO INFO
126 JEFFERSON		200.5m W OF MH AT SCOTIA	
127 JEFFERSON		197.8m W OF MH AT SCOTIA	
128 JEFFERSON		208.4m W OF MH AT SCOTIA	
129 JEFFERSON		208.4m W OF MH AT SCOTIA	
131 JEFFERSON		215.7m W OF MH AT SCOTIA	
132 JEFFERSON			NO INFO
133 JEFFERSON		228.2m W OF MH AT SCOTIA	
135 JEFFERSON		235.6m W OF MH AT SCOTIA	
136 JEFFERSON			NO INFO
140 JEFFERSON			NO INFO
143 JEFFERSON		1.6m W OF E LINE	
144 JEFFERSON			NO INFO

CHAINAGE ALONG S PL  
1+000.000 = W PL  
MAIN ST



REFER TO DWG 10437  
MATCHLINE AT STA 1+350

- CONSTRUCTION NOTES:**
- FOR DETAILED TEST HOLE INFORMATION, SEE SPECIFICATION.
  - LOCATION OF SERVICES SHOWN ON DRAWINGS ARE APPROXIMATE.
  - CONFIRM LOCATION OF ALL WATER & WASTEWATER SERVICES IN THE FIELD.
  - NOTIFY ALL AFFECTED RESIDENTS AND BUSINESSES 24 HOURS IN ADVANCE OF ANY SHUT DOWN OR DISRUPTION OF SERVICE.
  - INSTALL NEW SEWERS, CATCHBASIN LEADS AND WATERMANS BY TRENCHLESS METHODS.
  - ALL SHAFTS SHALL HAVE CLASS 3 BACKFILL.
  - MINIMUM COVER TO TOP OF PROPOSED WATERMAIN SHALL BE 2.5m FROM STREET CENTERLINE.
  - INSTALL ALL HYDRANTS WITH FLANGE ELEVATION 50mm TO 150mm ABOVE FINISHED GRADE.
  - HYDRANT ASSEMBLIES SHALL BE FULLY MECHANICALLY RESTRAINED.
  - REPLACE ALL EXISTING LEAD SERVICES FROM PROPOSED WATERMAIN TO PROPERTY LINE.
  - PROVIDE TRENCH INSULATION WHERE 2.1m OF COVER CANNOT BE PROVIDED FOR WATER SERVICES AS PER SD-018.
  - RENEW SEWER SERVICES TO PROPERTY LINE AND PLUG EXISTING SERVICE AS PER SD-021.
  - TEMPORARY OVERHEAD STREET LIGHTING AND PERMANENT STREET LIGHTING RESTORATIONS BY OTHERS.

**WARNING**  
IF POWER EQUIPMENT OR EXPLOSIVES ARE TO BE USED FOR EXCAVATION ON THIS PROJECT, THE CONTRACTOR MUST:  
1) NOTIFY THE GAS COMPANY OF THE PROPOSED LOCATION OF EXCAVATION.  
2) TAKE PRECAUTION TO AVOID DAMAGE TO GAS COMPANY INSTALLATIONS.  
SEE PROVINCIAL REGULATION 140/92 FOR DETAILS

EXISTING	LEGEND - PLAN	NEW	EXISTING	LEGEND - PROFILE	NEW
150 WM	WATERMAIN	150 WM	CURB STOP	150 WM	WATERMAIN
Hydrant	HYDRANT	Hydrant	REDUCER	Hydrant	HYDRANT
Valve	VALVE	Valve	COUPLING	Valve	VALVE
300 LDS	LAND DRAINAGE SEWER	300 LDS	ANODE	300 LDS	LAND DRAINAGE SEWER
250 WWS	WASTE WATER SEWER	250 WWS	HYDRO	250 WWS	WASTE WATER SEWER
Manhole	MANHOLE	Manhole	MTS	Manhole	MANHOLE
Catch Basin	CATCH BASIN	Catch Basin	GAS	Catch Basin	CATCH BASIN
Curb Inlet	CURB INLET	Curb Inlet	TESTHOLE	Curb Inlet	CURB INLET
Culvert	CULVERT	Culvert	LAMP STANDARD	Culvert	CULVERT
Pipe Abandonments	PIPE ABANDONMENTS	Pipe Abandonments	TREE	Pipe Abandonments	PIPE ABANDONMENTS
Survey Bar	SURVEY BAR	Survey Bar		Survey Bar	SURVEY BAR

**LOCATION APPROVED**  
UNDERGROUND STRUCTURES

BM 13-009 N.E. Cor. Jefferson Ave. & Main St., Tblt. in S. Conc. foundation of Lift Station, 0.5m W. & 0.1m below brick of S.E. Cor. of Slag.

NO. REVISIONS

DATE

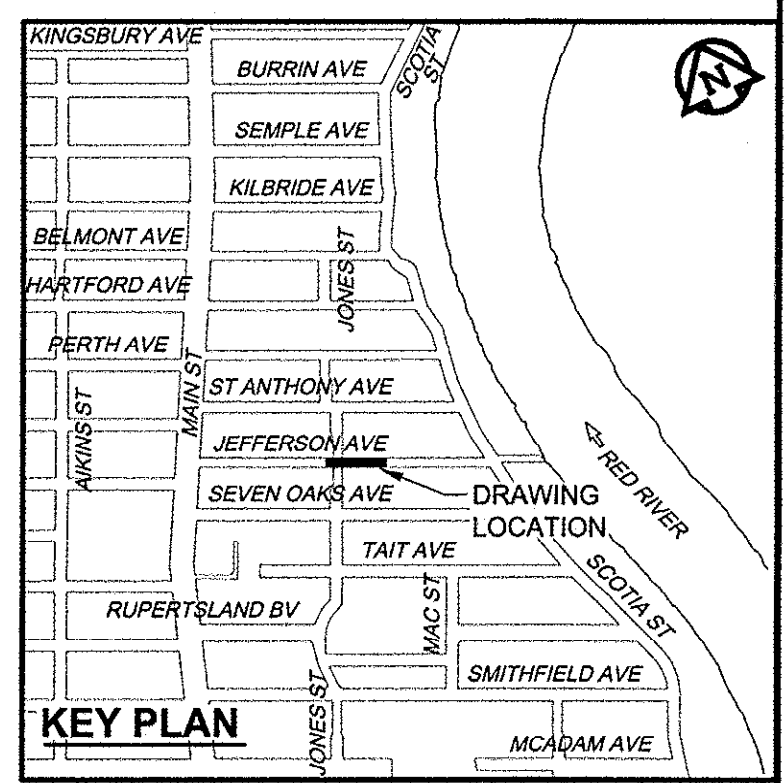
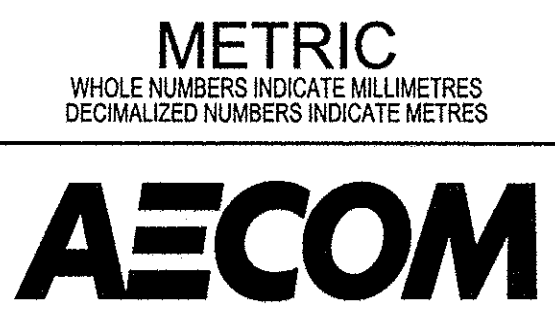
DESIGNED BY: FMI  
DRAWN BY: ADL  
HOR. SCALE: 1:250  
VERT. SCALE: 1:50

CHECKED BY: EDT  
APPROVED BY: [Signature]  
RELEASED FOR CONSTRUCTION: [Signature]  
DATE: Nov 13, 2012

PROFESSIONAL'S SEAL: A.J. TOUPIN, Member 23484, Nov 13, 2012

CONSULTANT DRAWING NO. 60219315-SHT-30-Ph02-C-0001

**APECM**  
Certificate of Authorization  
AECOM Canada Ltd.  
No. 4671 Date: Nov 13, 2012



BID OPPORTUNITY NO. 863-2012

**THE CITY OF WINNIPEG**  
WATER AND WASTE DEPARTMENT

**JEFFERSON EAST**  
COMBINED SEWER RELIEF  
CONTRACT 2  
JEFFERSON AVENUE  
JONES STREET TO  
170m WEST OF SCOTIA STREET

SHEET 01 OF 19  
CITY DRAWING NUMBER 10436  
REV 0

AECOM REVIEW DRFT CHK

AECOM FILE NAME: 60219315-SHT-30-Ph02-C-0001.dwg Saved By: [Name]