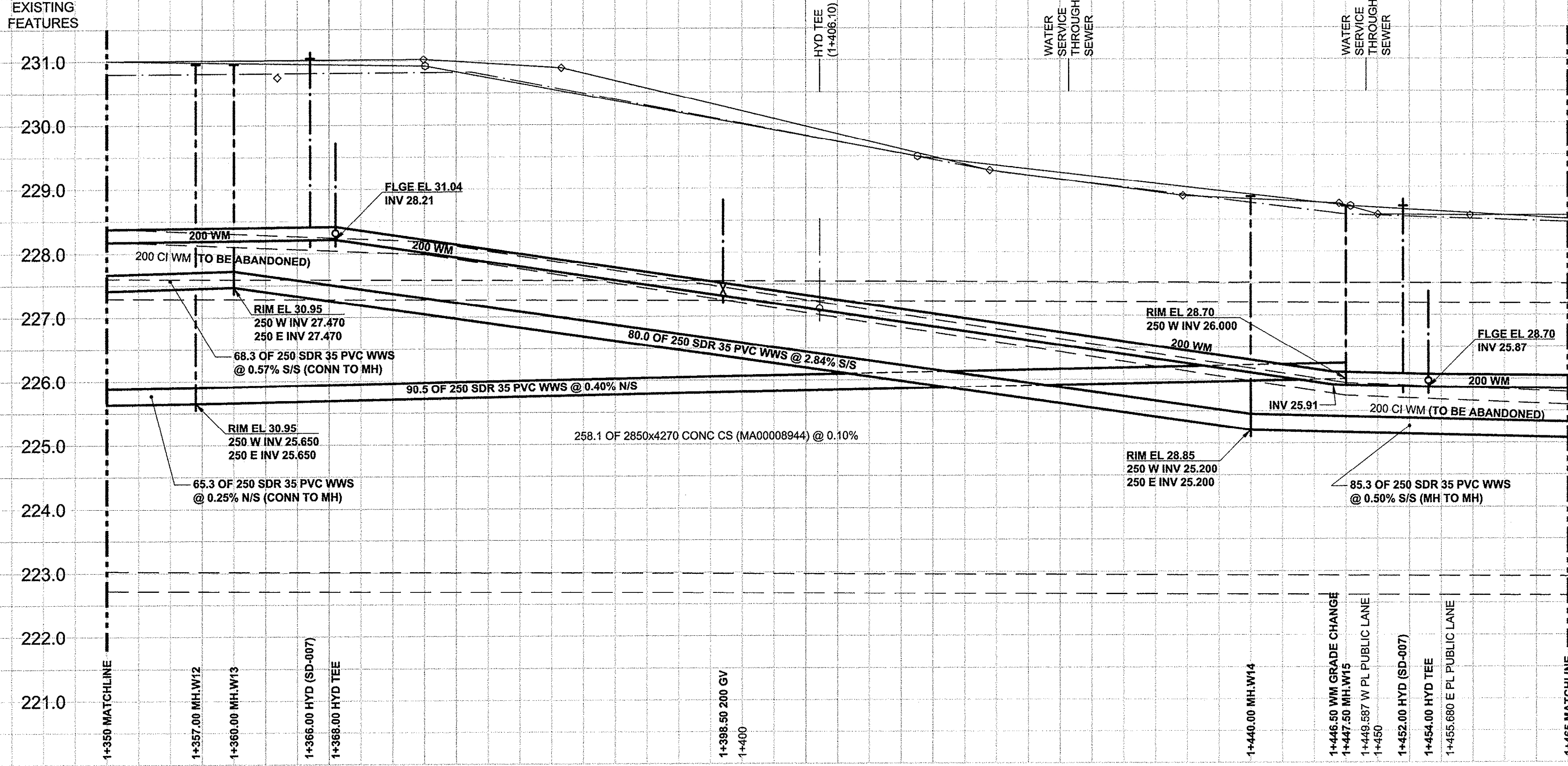


D SIZE 22" x 34" (564mm x 864mm) PLOT: 11/7/2012 1:30:33 PM AECOM REVIEW DRFT CHK

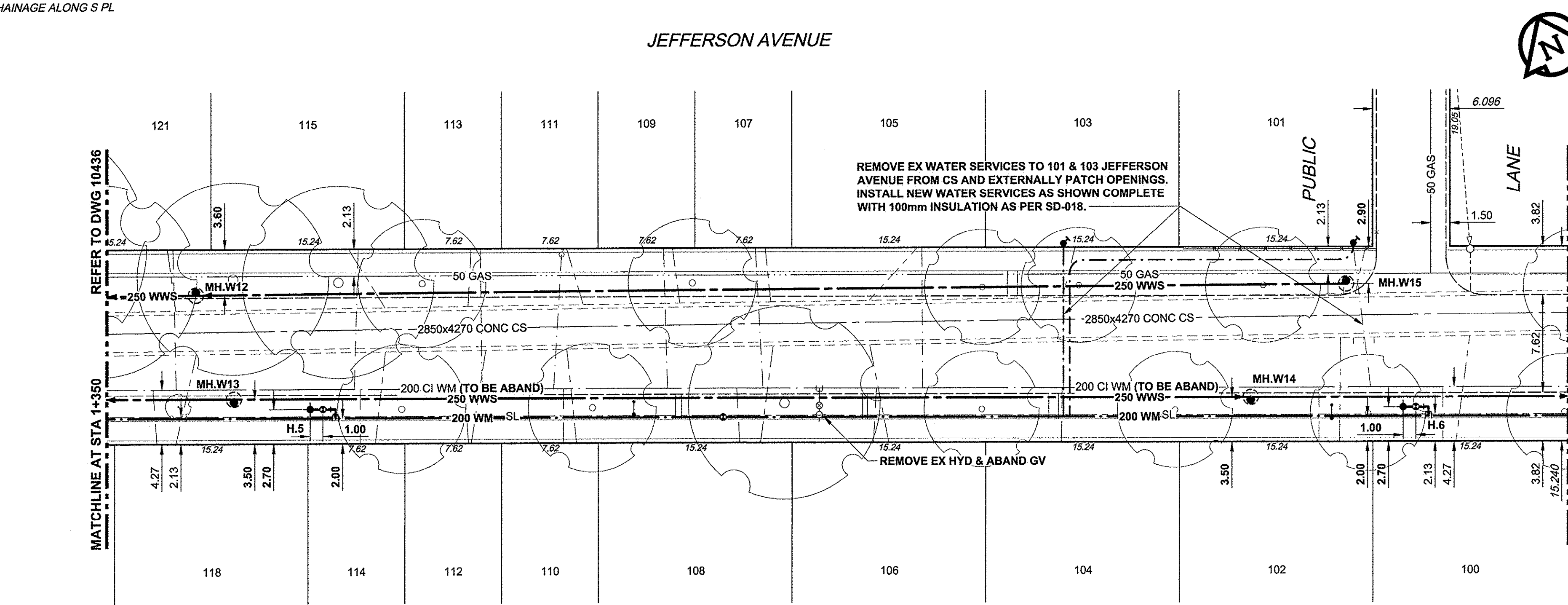


**SEWER SERVICE INFORMATION**

ADDRESS	PL TIE (SHORT/LONG)	JUNCTION TIE	REMARKS
100 JEFFERSON			NO INFO
101 JEFFERSON		79.2m W OF MH	
102 JEFFERSON			NO INFO
103 JEFFERSON		101.8m W OF MH	
104 JEFFERSON		101.1m W OF MH AT SCOTIA	
105 JEFFERSON		117m W OF MH AT SCOTIA	
106 JEFFERSON		117m W OF MH AT SCOTIA	
107 JEFFERSON		8m E OF W LOT LINE	
108 JEFFERSON		124.6m W OF MH AT SCOTIA	
109 JEFFERSON		131.9m W OF MH AT SCOTIA	
110 JEFFERSON			NO INFO
111 JEFFERSON		139.5m W OF MH AT SCOTIA	
112 JEFFERSON		147.2m W OF MH AT SCOTIA	
113 JEFFERSON		155.1m W OF MH AT SCOTIA	
114 JEFFERSON		155.1m W OF MH AT SCOTIA	
115 JEFFERSON		170m W OF MH AT SCOTIA	
118 JEFFERSON		170m W OF MH AT SCOTIA	
120 JEFFERSON		177.6m W OF MH AT SCOTIA	
121 JEFFERSON			NO INFO

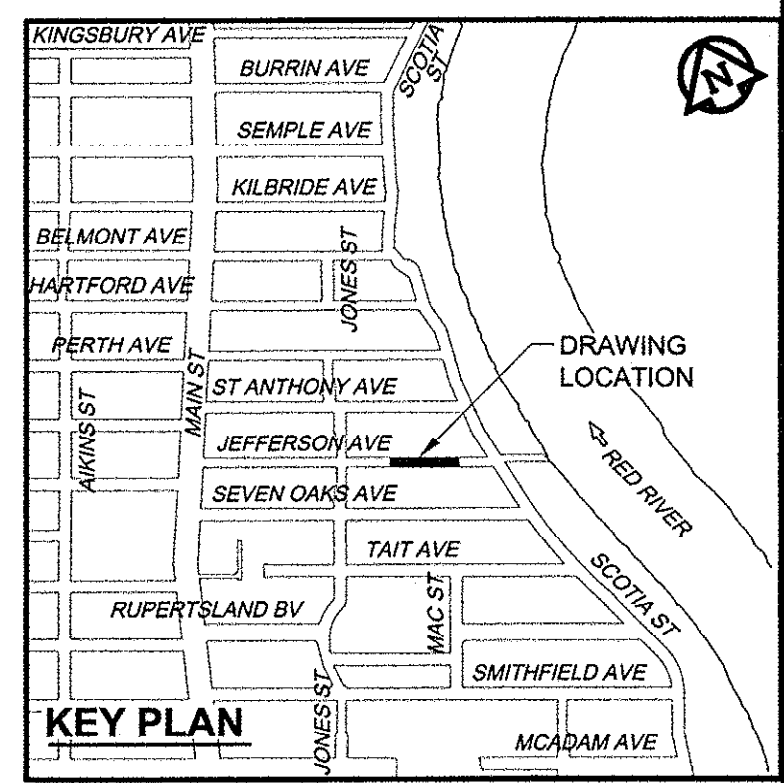
**WATER SERVICE INFORMATION**

ADDRESS	DISTANCE PROPERTY	SIZE(mm) & TYPE	SHORT & LONG MEASUREMENT	CORPORATION LOCATION	REMARKS
100 JEFFERSON	0.15	20 COPPER	3.6m EWL OF HOUSE	OPP SC	
101 JEFFERSON	0.15	20 COPPER	49.5m E 1ST HYD W SCOTIA	OPP SC	
102 JEFFERSON	0.30	20 COPPER	0.0m E/EHL	1.3m E OF S/C	
103 JEFFERSON	0.30	20 COPPER	0.6m WEL OF HOUSE	OPP SC	
104 JEFFERSON	0.30	20 COPPER	39.7m E 1ST HYD W SCOTIA	OPP SC	
105 JEFFERSON	0.30	20 COPPER	3.2m EWL OF HOUSE	OPP SC	
106 JEFFERSON	0.30	20 COPPER	19.6m E 1ST HYD W SCOTIA	OPP SC	
107 JEFFERSON	0.30	20 COPPER	4.5m EWL OF HOUSE	0.1m E OF S/C	
108 JEFFERSON	0.30	20 COPPER	19.5m E 1ST HYD W SCOTIA	0.1m E OF S/C	
109 JEFFERSON	0.15	20 COPPER	0.6m WEL OF HOUSE	0m E OF S/C	
110 JEFFERSON	0.15	20 COPPER	8.5m E 1ST HYD W SCOTIA	0.2m E OF S/C	
111 JEFFERSON	0.30	16 LEAD	5.1m WEL OF HOUSE	0.2m E OF S/C	
112 JEFFERSON	0.15	20 COPPER	4.5m W HYD W SCOTIA	0.6m E OF S/C	
113 JEFFERSON	0.15	20 COPPER	0.3m WEL OF HOUSE	0.2m W OF S/C	
114 JEFFERSON	0.50	20 COPPER	5.7m W 1ST HYD W SCOTIA	0.2m W OF S/C	
115 JEFFERSON	0.50	20 COPPER	2.1m WEL OF HOUSE	0.3m E OF S/C	
116 JEFFERSON	0.50	20 COPPER	116.4m EEL OF JONES	0.3m E OF S/C	
117 JEFFERSON	8.0 BLDG	20 COPPER	2.2m W/EBL 2.8m WELL	OPP S/C	
118 JEFFERSON	0.30	16 LEAD	2.1m WEL OF HOUSE	0.3m W OF S/C	
119 JEFFERSON	0.30	16 LEAD	20.1m W 1ST HYD W SCOTIA	0.3m W OF S/C	
120 JEFFERSON	0.15	16 LEAD	1.2m WEL OF HOUSE	0.3m W OF S/C	
121 JEFFERSON	0.30	16 LEAD	27.1m W 1ST HYD W SCOTIA	0.3m W OF S/C	
122 JEFFERSON	0.30	16 LEAD	0.6m WEL OF HOUSE	0.1m E OF S/C	
123 JEFFERSON	0.30	16 LEAD	28.2m W 1ST HYD W SCOTIA	0.1m E OF S/C	
124 JEFFERSON	0.50	16 LEAD	2.5m WEL OF HOUSE	OPP SC	
125 JEFFERSON	0.30	20 COPPER	35.8m W 1ST HYD W SCOTIA	0.3m W OF S/C	
126 JEFFERSON	0.15	20 COPPER	2.7m EWL OF HOUSE	0.3m W OF S/C	
127 JEFFERSON	0.50	20 COPPER	51.6m W 1ST HYD W SCOTIA	0.3m W OF S/C	
128 JEFFERSON	0.50	20 COPPER	1.2m WEL OF HOUSE	0.3m E OF S/C	
129 JEFFERSON	0.50	20 COPPER	57.6m W 1ST HYD W SCOTIA	0.3m E OF S/C	
130 JEFFERSON	0.30	16 LEAD	1.9m WEL OF HOUSE	OPP SC	
131 JEFFERSON	0.30	16 LEAD	50.1m W 1ST HYD W SCOTIA	OPP SC	



**CONSTRUCTION NOTES:**

- FOR DETAILED TEST HOLE INFORMATION, SEE SPECIFICATION.
- LOCATION OF SERVICES SHOWN ON DRAWINGS ARE APPROXIMATE.
- CONFIRM LOCATION OF ALL WATER & WASTEWATER SERVICES IN THE FIELD.
- NOTIFY ALL AFFECTED RESIDENTS AND BUSINESSES 24 HOURS IN ADVANCE OF ANY SHUT DOWN OR DISRUPTION OF SERVICE.
- INSTALL NEW SEWERS, CATCHBASIN LEADS AND WATERMANS BY TRENCHLESS METHODS.
- ALL SHAFTS SHALL HAVE CLASS 3 BACKFILL.
- MINIMUM COVER TO TOP OF PROPOSED WATERMAIN SHALL BE 2.5m FROM STREET CENTERLINE.
- INSTALL ALL HYDRANTS WITH FLANGE ELEVATION 50mm TO 150mm ABOVE FINISHED GRADE.
- HYDRANT ASSEMBLIES SHALL BE FULLY MECHANICALLY RESTRAINED.
- REPLACE ALL EXISTING LEAD SERVICES FROM PROPOSED WATERMAIN TO PROPERTY LINE.
- PROVIDE TRENCH INSULATION WHERE 2.1m OF COVER CANNOT BE PROVIDED FOR WATER SERVICES AS PER SD-018.
- RENEW SEWER SERVICES TO PROPERTY LINE AND PLUG EXISTING SERVICE AS PER SD-021.
- TEMPORARY OVERHEAD STREET LIGHTING AND PERMANENT STREET LIGHTING RESTORATIONS BY OTHERS.



**WARNING**  
 IF POWER EQUIPMENT OR EXPLOSIVES ARE TO BE USED FOR EXCAVATION ON THIS PROJECT, THE CONTRACTOR MUST:  
 1) NOTIFY THE GAS COMPANY OF THE PROPOSED LOCATION OF EXCAVATION.  
 2) TAKE PRECAUTION TO AVOID DAMAGE TO GAS COMPANY INSTALLATIONS.  
 SEE PROVINCIAL REGULATION 140/92 FOR DETAILS.

150 WM	WATERMAIN	150 WM	CURB STOP	150 WM	WATERMAIN	150 WM
○	HYDRANT	●	REDUCER	+	HYDRANT	+
○	VALVE	○	COUPLING	+	VALVE	+
○	LAND DRAINAGE SEWER	○	ANODE	+	LAND DRAINAGE SEWER	+
○	WASTE WATER SEWER	○	HYDRO	+	WASTE WATER SEWER	+
○	MANHOLE	○	MTS	+	PAVEMENT CROWN	+
○	CATCH BASIN	○	GAS	+	N/W PROPERTY LINE	+
○	CURB INLET	○	TESTHOLE	+	S/E PROPERTY LINE	+
○	CULVERT	○	LAMP STANDARD	+	N/W GUTTER	+
○	PIPE ABANDONMENTS	○	TREE	+	S/E GUTTER	+
○	SURVEY BAR	○		+		+
○	EXISTING	○	LEGEND - PLAN	○	LEGEND - PROFILE	○

**LOCATION APPROVED**  
 UNDERGROUND STRUCTURES  
 SUPR. U/G STRUCTURES DATE COMMITTEE  
 NOTE:  
 LOCATION OF UNDERGROUND STRUCTURES AS SHOWN ARE BASED ON THE BEST INFORMATION AVAILABLE. BUT NO GUARANTEE IS GIVEN THAT ALL EXISTING UTILITIES ARE SHOWN OR THAT THE GIVEN LOCATIONS ARE EXACT. CONFIRMATION OF EXISTENCE AND EXACT LOCATION OF ALL SERVICES MUST BE OBTAINED FROM THE INDIVIDUAL UTILITIES BEFORE PROCEEDING WITH CONSTRUCTION.

BM 13-009	N.E. Cor. Jefferson Ave. & Main St., Tblt. in S. Conc. foundation of Lift Station, 0.5m W. & 0.1m below brick of S.E. Cor. of Bldg.
ELEV 230.692m	
0	ISSUED FOR CONSTRUCTION
NO.	REVISIONS
12/11/13	ADL
YYMMDD	BY

**AECOM**  
 WHOLE NUMBERS INDICATE MILLIMETRES  
 DECIMALIZED NUMBERS INDICATE METRES

DESIGNED BY: FMI  
 CHECKED BY: EDT  
 DRAWN BY: ADL  
 APPROVED BY: [Signature]  
 HOR. SCALE: 1:250  
 VERT. SCALE: 1:50  
 DATE: Nov 13, 2012

**APECM**  
 Certificate of Authorization  
 AECOM Canada Ltd.  
 No. 4671 Date: Nov 13, 2012

PROFESSIONAL'S SEAL  
**Winnipeg**  
 REGISTERED PROFESSIONAL ENGINEER  
 CONSULTANT DRAWING NO. 60219315-SHT-30-Ph02 C-0002

**THE CITY OF WINNIPEG**  
 WATER AND WASTE DEPARTMENT

**JEFFERSON EAST**  
**COMBINED SEWER RELIEF**  
**CONTRACT 2**  
 JEFFERSON AVENUE  
 70m EAST OF JONES STREET TO  
 55m WEST OF SCOTIA STREET

SHEET 02 OF 19  
 CITY DRAWING NUMBER 10437  
 REV 0

BID OPPORTUNITY NO. 863-2012