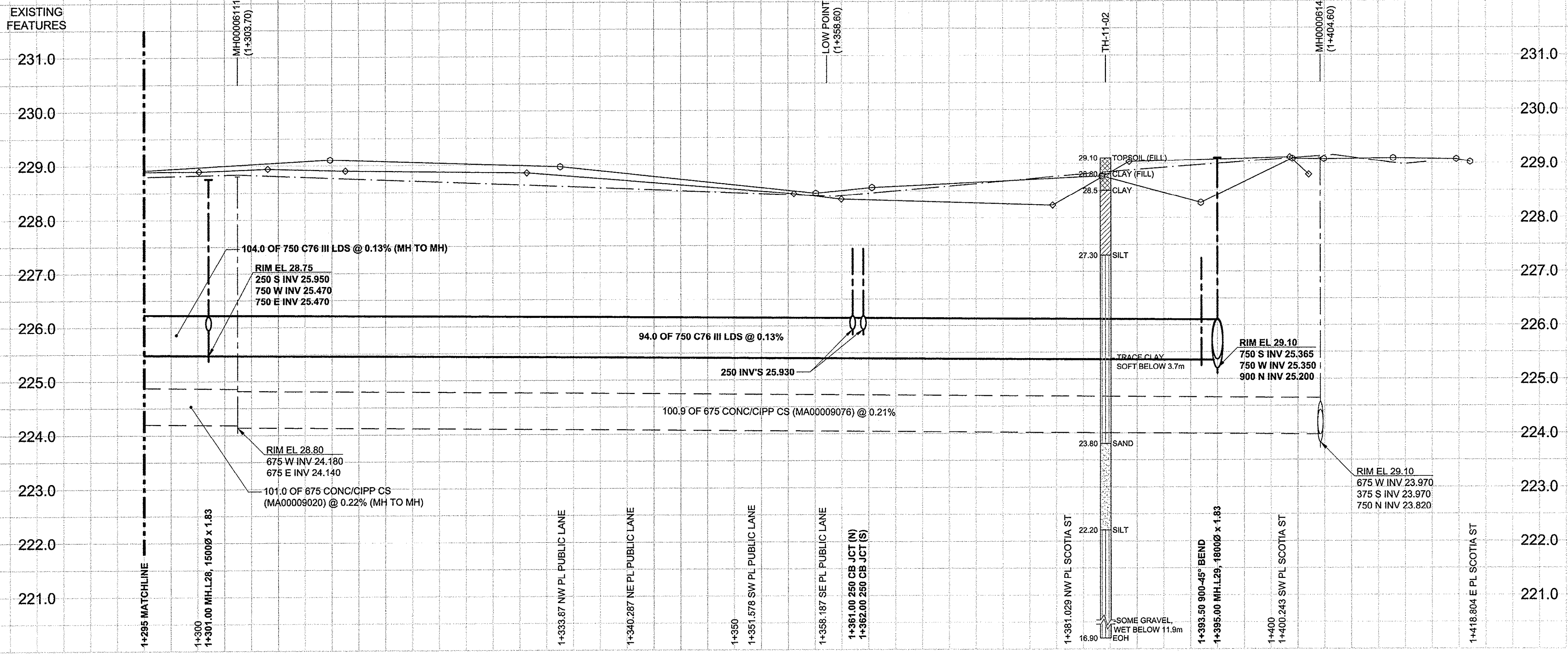


D SIZE 21" x 34" (549mm x 864mm)

PLOT: 11/7/2012 1:32:03 PM

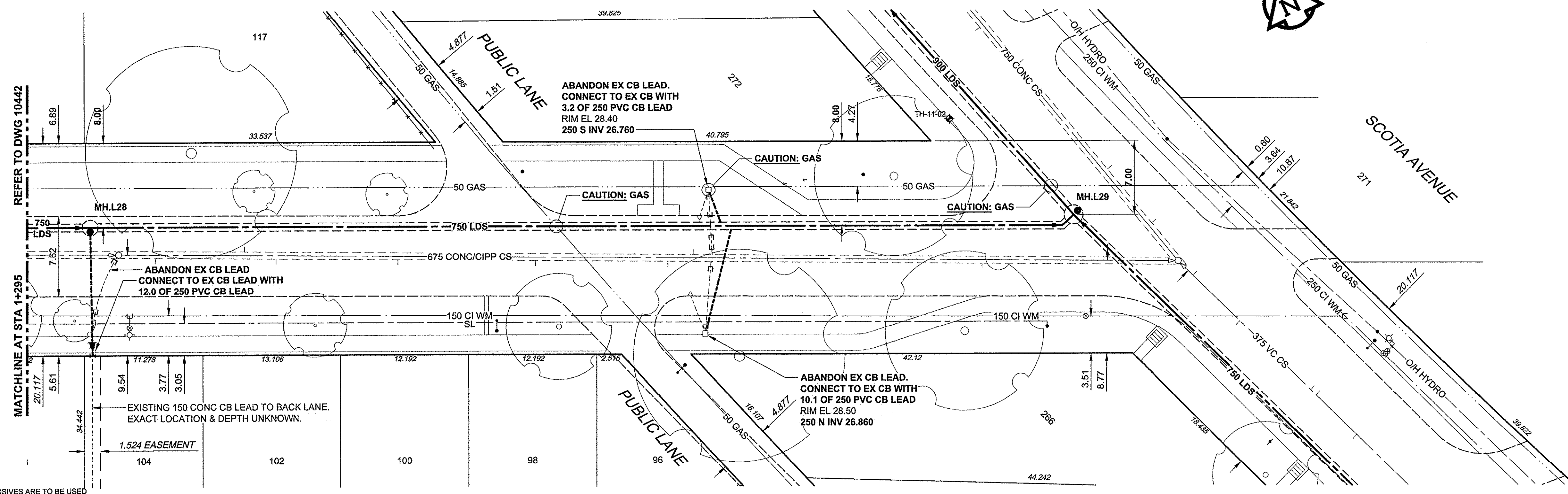
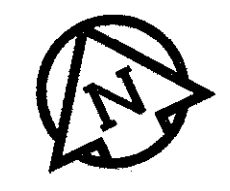
AECOM REVIEW DRFT CHK



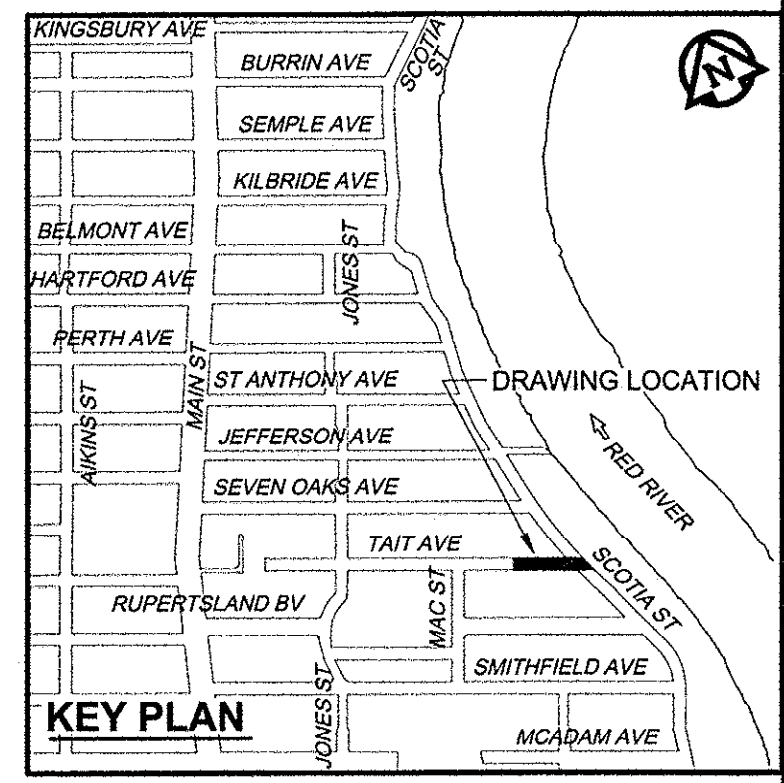
CHAINAGE ALONG S PL

TAIT AVENUE

FOR FURTHER INFO SEE DWG 10452



- CONSTRUCTION NOTES:**
- FOR DETAILED TEST HOLE INFORMATION, SEE SPECIFICATION.
 - CONFIRM LOCATION OF ALL WATER & WASTEWATER SERVICES IN THE FIELD.
 - INSTALL NEW SEWERS, CATCHBASIN LEADS AND WATERMAINS BY TRENCHLESS METHODS.
 - LOCATION OF SERVICES SHOWN ON DRAWINGS ARE APPROXIMATE.
 - ALL SHAFTS SHALL HAVE CLASS 3 BACKFILL EXCEPTING THOSE ON MAIN STREET WHICH SHALL HAVE CLASS 1 BACKFILL.



WARNING

IF POWER EQUIPMENT OR EXPLOSIVES ARE TO BE USED FOR EXCAVATION ON THIS PROJECT, THE CONTRACTOR MUST:

- NOTIFY THE GAS COMPANY OF THE PROPOSED LOCATION OF EXCAVATION.
- TAKE PRECAUTION TO AVOID DAMAGE TO GAS COMPANY INSTALLATIONS.

SEE PROVINCIAL REGULATION 140/92 FOR DETAILS

150 WM	WATERMAIN	150 WM	CURB STOP	150 WM	WATERMAIN	150 WM
	HYDRANT		REDUCER		HYDRANT	
	VALVE		COUPLING		VALVE	
	LAND DRAINAGE SEWER		ANODE		LAND DRAINAGE SEWER	
	WASTE WATER SEWER		HYDRO		WASTE WATER SEWER	
	MANHOLE		MTS		PAVEMENT CROWN	
	CATCH BASIN		GAS		N/W PROPERTY LINE	
	CURB INLET		TESTHOLE		S/E PROPERTY LINE	
	CULVERT		LAMP STANDARD		N/W GUTTER	
	PIPE ABANDONMENTS		TREE		S/E GUTTER	
	SURVEY BAR					
	EXISTING		LEGEND - PLAN		LEGEND - PROFILE	

LOCATION APPROVED
UNDERGROUND STRUCTURES

DATE: _____

NOTE: LOCATION OF UNDERGROUND STRUCTURES AS SHOWN ARE BASED ON THE BEST INFORMATION AVAILABLE. BUT NO GUARANTEE IS GIVEN THAT ALL EXISTING UTILITIES ARE SHOWN OR THAT THE GIVEN LOCATIONS ARE EXACT. CONFIRMATION OF EXISTENCE AND EXACT LOCATION OF ALL SERVICES MUST BE OBTAINED FROM THE INDIVIDUAL UTILITIES BEFORE PROCEEDING WITH CONSTRUCTION.

NO.	ISSUED FOR CONSTRUCTION	DATE	BY
0	ISSUED FOR CONSTRUCTION	12/11/13	ADL
	REVISIONS	YYMMDD	

METRIC
WHOLE NUMBERS INDICATE MILLIMETRES
DECIMALIZED NUMBERS INDICATE METRES

FOR FURTHER INFO SEE DWG C-0016

AECOM

DESIGNED BY: FMI
DRAWN BY: ADL
CHECKED BY: EDI
APPROVED BY: [Signature]
HOR. SCALE: 1:250
VERT. SCALE: 1:50
DATE: Nov 13, 2012

PROFESSIONAL'S SEAL

PROVINCE OF MANITOBA
REGISTERED PROFESSIONAL ENGINEER
W. D. J. TOUPIN
Member
23484
CONSULTANT DRAWING NO.
60219315-SHT-30-PH02-C-0008

THE CITY OF WINNIPEG
WATER AND WASTE DEPARTMENT

JEFFERSON EAST
COMBINED SEWER RELIEF
CONTRACT 2
TAIT AVENUE
82m EAST OF MAC STREET TO
SCOTIA STREET

SHEET 08 OF 19
CITY DRAWING NUMBER
10443
REV 0

BID OPPORTUNITY NO. 863-2012