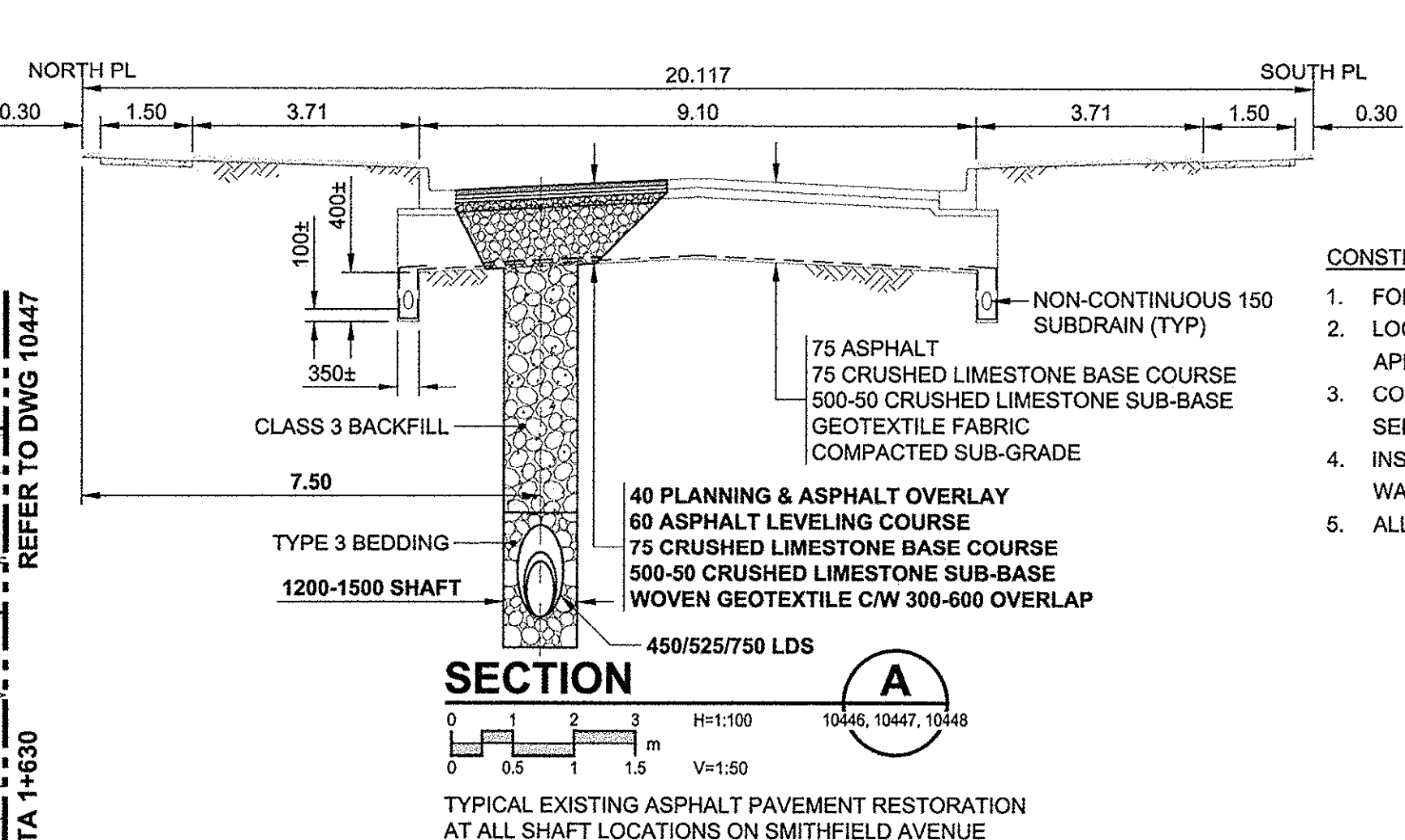
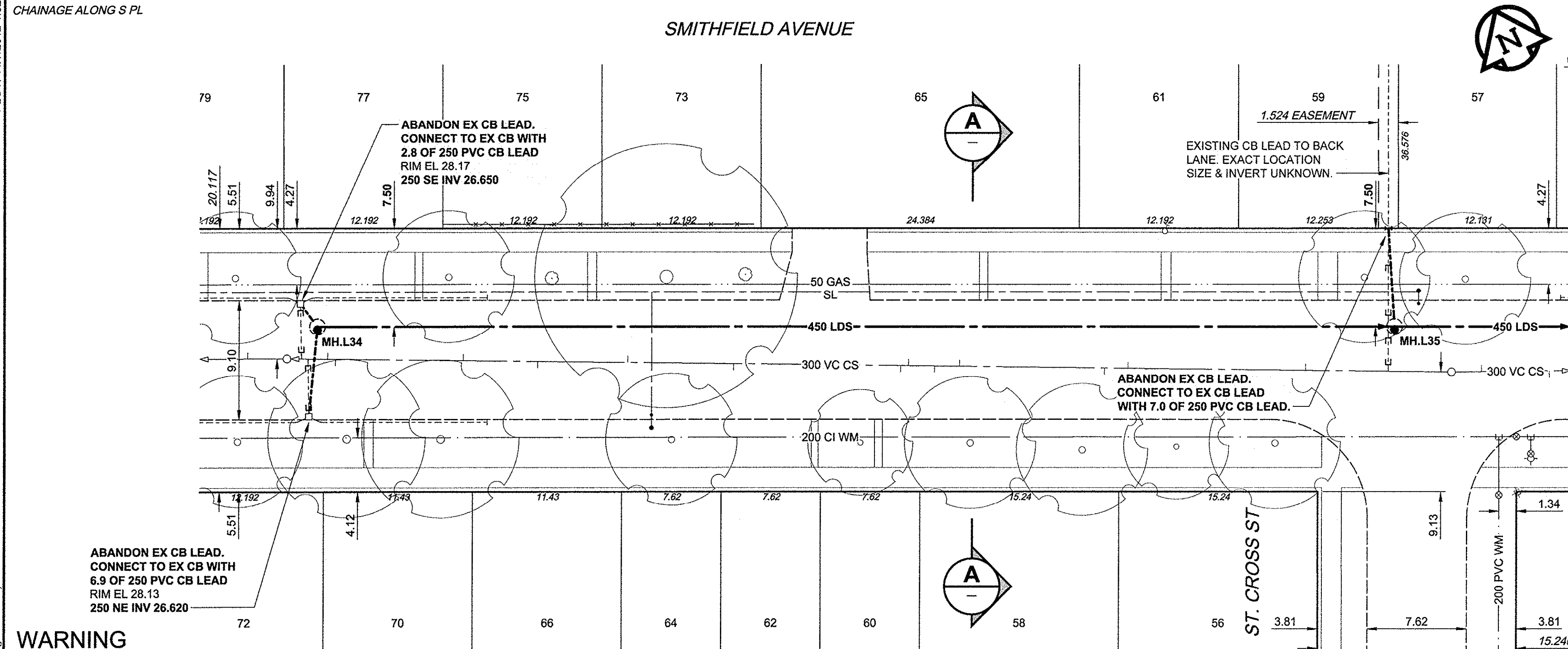
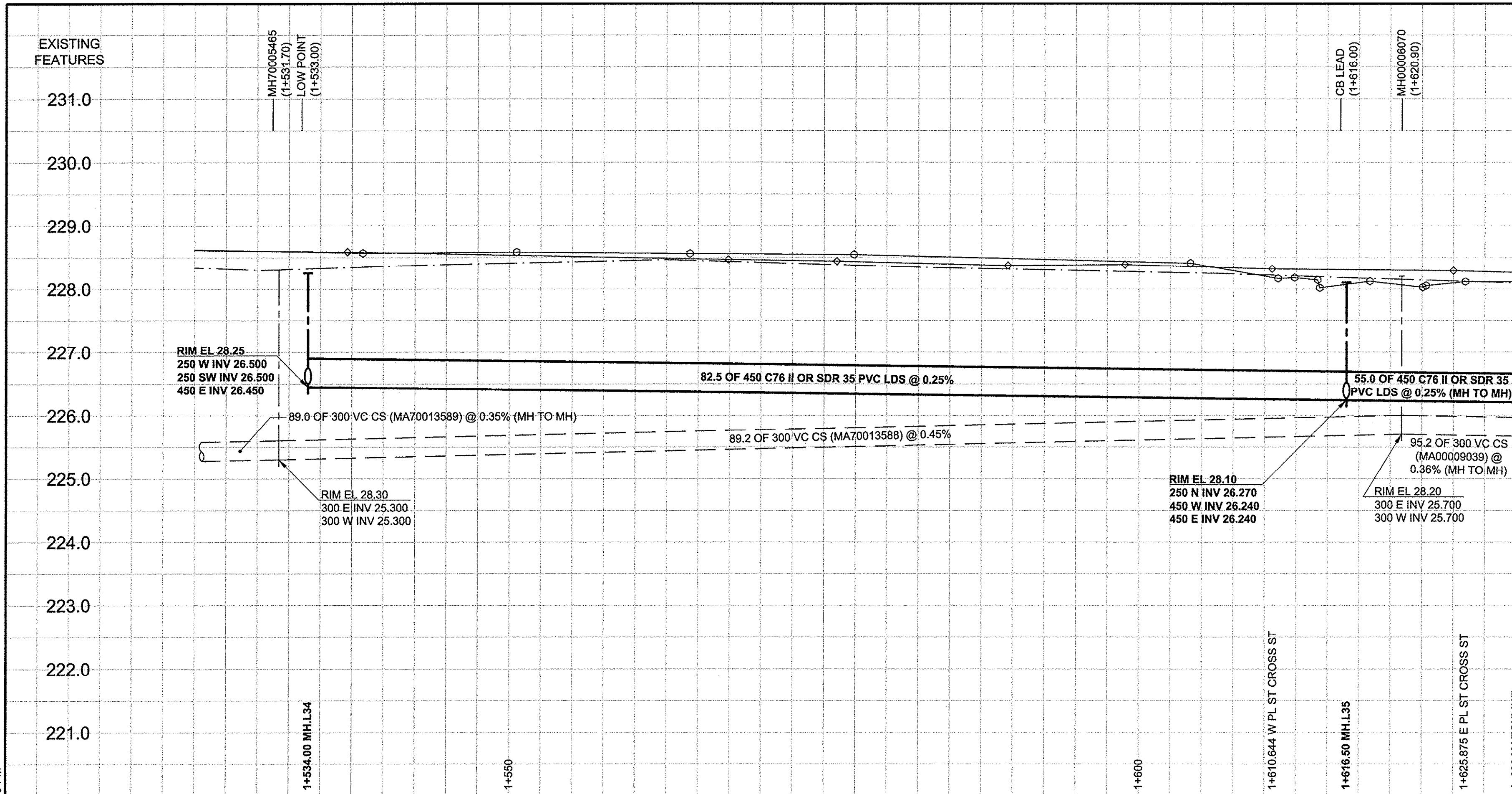


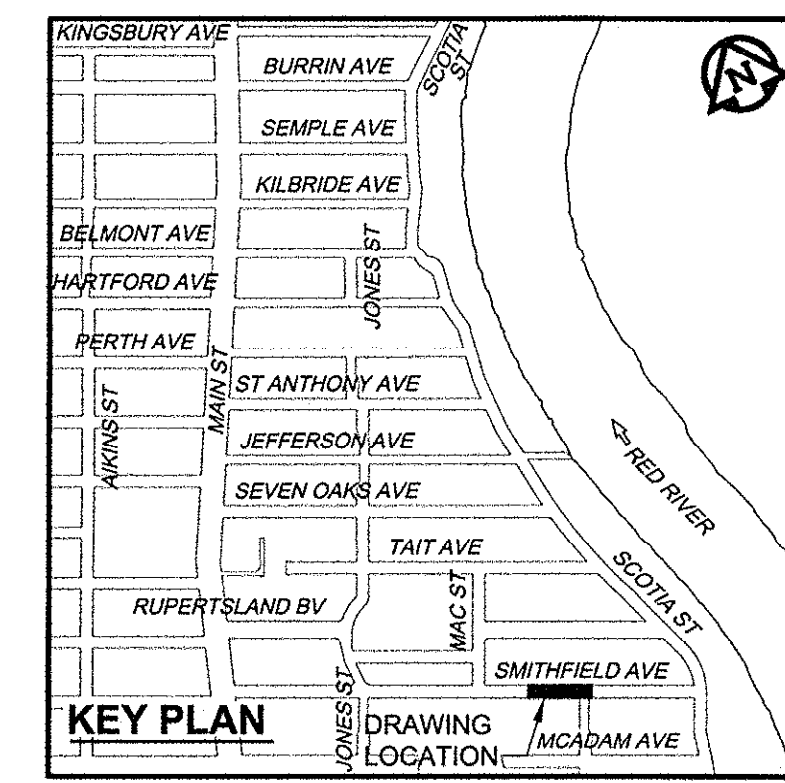
D SIZE 22" x 34" (559mm x 864mm)

PLOT: 11/17/2012 1:32:49 PM

AECOM REVIEW DRAFT CHK



- CONSTRUCTION NOTES:**
- FOR DETAILED TEST HOLE INFORMATION, SEE SPECIFICATION.
 - LOCATION OF SERVICES SHOWN ON DRAWINGS ARE APPROXIMATE.
 - CONFIRM LOCATION OF ALL WATER & WASTEWATER SERVICES IN THE FIELD.
 - INSTALL NEW SEWERS, CATCHBASIN LEADS AND WATERMANS BY TRENCHLESS METHODS.
 - ALL SHAFTS SHALL HAVE CLASS 3 BACKFILL.



WARNING
 IF POWER EQUIPMENT OR EXPLOSIVES ARE TO BE USED FOR EXCAVATION ON THIS PROJECT, THE CONTRACTOR MUST:
 1) NOTIFY THE GAS COMPANY OF THE PROPOSED LOCATION OF EXCAVATION.
 2) TAKE PRECAUTION TO AVOID DAMAGE TO GAS COMPANY INSTALLATIONS.
 SEE PROVINCIAL REGULATION 140/92 FOR DETAILS

150 WM	WATERMAIN	150 WM	CURB STOP	150 WM	WATERMAIN	150 WM
⊕	HYDRANT	⊕	REDUCER	⊕	HYDRANT	⊕
⊗	VALVE	⊗	COUPLING	⊗	VALVE	⊗
⊖	LAND DRAINAGE SEWER	⊖	ANODE	⊖	LAND DRAINAGE SEWER	⊖
⊙	WASTE WATER SEWER	⊙	HYDRO	⊙	WASTE WATER SEWER	⊙
○	MANHOLE	●	MTS	○	PAVEMENT CROWN	○
□	CATCH BASIN	▲	GAS	□	N/W PROPERTY LINE	□
△	CURB INLET	◆	TESTHOLE	△	S/E PROPERTY LINE	△
▭	CULVERT	⊕	LAMP STANDARD	▭	N/W GUTTER	▭
—	PIPE ABANDONMENTS	⊕	TREE	—	S/E GUTTER	—
+	SURVEY BAR	○		+		+
⊕	EXISTING	●	LEGEND - PLAN	⊕	LEGEND - PROFILE	⊕
○	NEW	⊕	EXISTING	●	NEW	○

LOCATION APPROVED
 UNDERGROUND STRUCTURES

SUPR. U/G STRUCTURES COMMITTEE DATE

NOTE:
 LOCATION OF UNDERGROUND STRUCTURES AS SHOWN ARE BASED ON THE BEST INFORMATION AVAILABLE, BUT NO GUARANTEE IS GIVEN THAT ALL EXISTING UTILITIES ARE SHOWN OR THAT THE GIVEN LOCATIONS ARE EXACT. CONFIRMATION OF EXISTENCE AND EXACT LOCATION OF ALL SERVICES MUST BE OBTAINED FROM THE INDIVIDUAL UTILITIES BEFORE PROCEEDING WITH CONSTRUCTION.

BM 13-009	N.E. Cor. Jefferson Ave. & Main St. Tbl. in S. Conc. foundation of Lift Station, 0.5m W. & 0.1m below brick of S.E. Cor. of Bldg.
ELEV 230.692m	
NO.	REVISIONS
0	ISSUED FOR CONSTRUCTION 12/11/13 ADL
	YYMMDD BY

AECOM

DESIGNED BY FMI
 CHECKED BY EDT
 DRAWN BY ADL
 APPROVED BY
 HOR. SCALE 1:250
 VERT. SCALE 1:50
 RELEASED FOR CONSTRUCTION
 DATE Nov 13, 2012

APECM
 Certificate of Authorization
 AECOM Canada Ltd.
 No. 4671 Date: Nov 13, 2012

PROFESSIONAL'S SEAL
 PROVINCE OF MANITOBA
 E.D.J. TOUPIN
 Member
 23484
 REGISTERED PROFESSIONAL ENGINEER
 CONSULTANT DRAWING NO.
 60219315-SHT-30-Ph02 C-0011

THE CITY OF WINNIPEG
 WATER AND WASTE DEPARTMENT

JEFFERSON EAST
COMBINED SEWER RELIEF
CONTRACT 2
SMITHFIELD AVENUE
 70m EAST OF MAC STREET TO
 170m WEST OF SCOTIA STREET

SHEET 11 OF 19
 CITY DRAWING NUMBER
10446
 REV 0

BID OPPORTUNITY NO. 863-2012