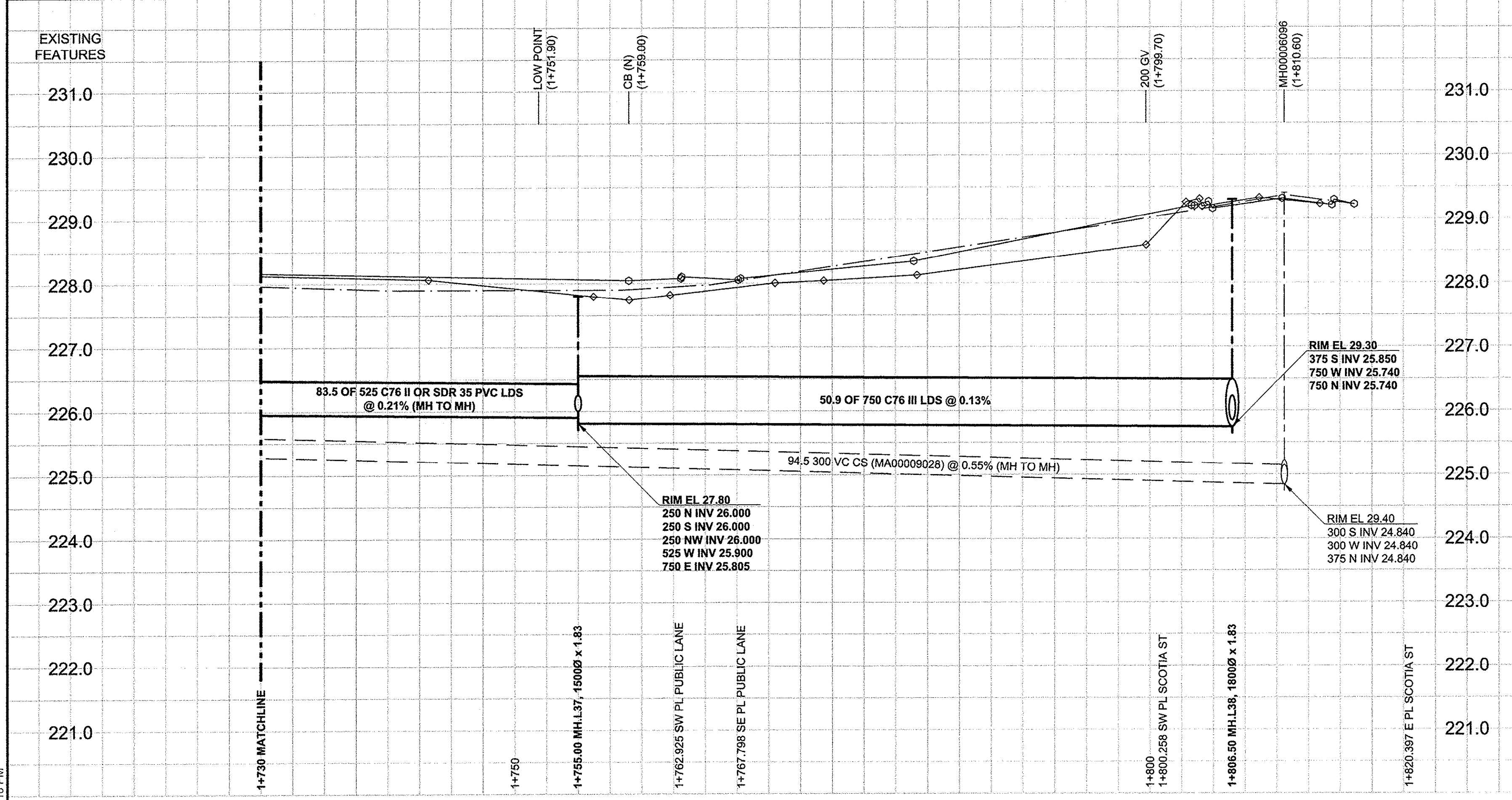


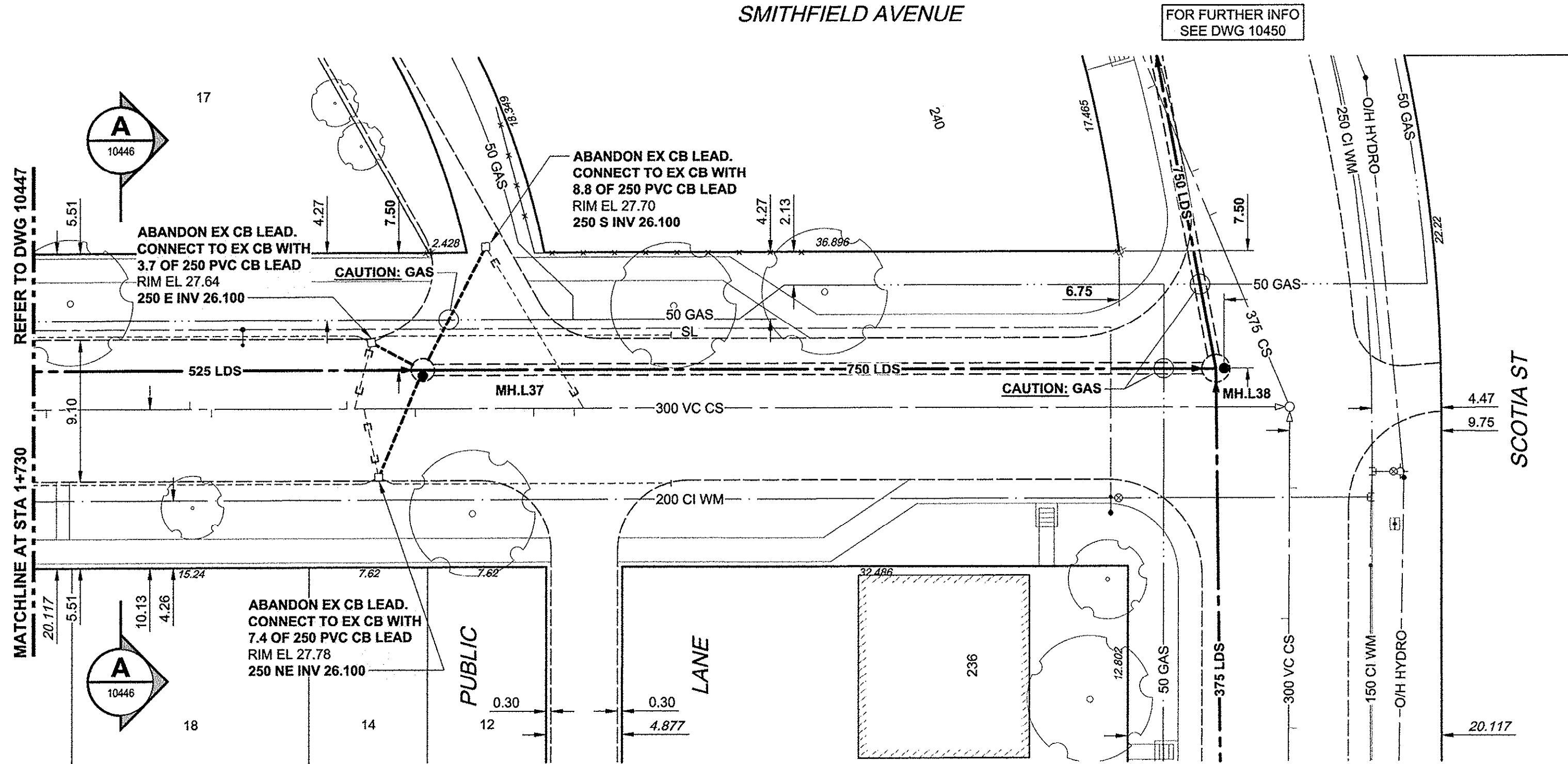
D SIZE 22" x 34" (558mm x 864mm)

PLOT: 11/7/2012 1:33:18 PM

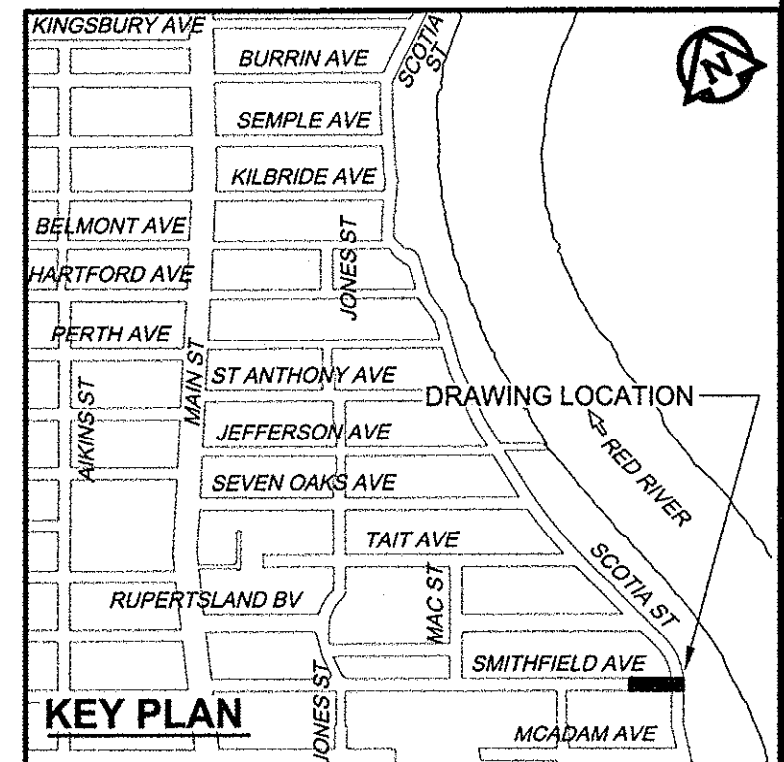
AECOM REVIEW DRFT CHK



CHAINAGE ALONG S PL



- CONSTRUCTION NOTES:**
- FOR DETAILED TEST HOLE INFORMATION, SEE SPECIFICATION.
  - LOCATION OF SERVICES SHOWN ON DRAWINGS ARE APPROXIMATE.
  - CONFIRM LOCATION OF ALL WATER & WASTEWATER SERVICES IN THE FIELD.
  - INSTALL NEW SEWERS, CATCHBASIN LEADS AND WATERMANS BY TRENCHLESS METHODS.
  - ALL SHAFTS SHALL HAVE CLASS 3 BACKFILL.



**WARNING**

IF POWER EQUIPMENT OR EXPLOSIVES ARE TO BE USED FOR EXCAVATION ON THIS PROJECT, THE CONTRACTOR MUST:

- NOTIFY THE GAS COMPANY OF THE PROPOSED LOCATION OF EXCAVATION.
- TAKE PRECAUTION TO AVOID DAMAGE TO GAS COMPANY INSTALLATIONS.

SEE PROVINCIAL REGULATION 140/92 FOR DETAILS

150 WM	WATERMAIN	150 WM	♂	CURB STOP	150 WM	WATERMAIN	150 WM
300 LDS	LAND DRAINAGE SEWER	300 LDS	⊕	REDUCER	300 LDS	LAND DRAINAGE SEWER	300 LDS
250 WWS	WASTE WATER SEWER	250 WWS	⊖	COUPLING	250 WWS	WASTE WATER SEWER	250 WWS
○	MANHOLE	●	⊕	ANODE	○	MANHOLE	○
□	CATCH BASIN	■	⊖	HYDRO	□	CATCH BASIN	□
△	CURB INLET	▲	♂	MTS	△	CURB INLET	△
▭	CULVERT	◆	♂	GAS	▭	CULVERT	▭
+	PIPE ABANDONMENTS	⊕	♂	TESTHOLE	+	PIPE ABANDONMENTS	+
⊕	SURVEY BAR	⊕	♂	LAMP STANDARD	⊕	SURVEY BAR	⊕
⊕	EXISTING	⊕	♂	TREE	⊕	EXISTING	⊕
⊕	LEGEND - PLAN	⊕	♂		⊕	LEGEND - PROFILE	⊕
⊕	NEW	⊕	♂		⊕	NEW	⊕

**LOCATION APPROVED**  
UNDERGROUND STRUCTURES

DATE: \_\_\_\_\_

NOTE: LOCATION OF UNDERGROUND STRUCTURES AS SHOWN ARE BASED ON THE BEST INFORMATION AVAILABLE. BUT NO GUARANTEE IS GIVEN THAT ALL EXISTING UTILITIES ARE SHOWN OR THAT THE GIVEN LOCATIONS ARE EXACT. CONFIRMATION OF EXISTENCE AND EXACT LOCATION OF ALL SERVICES MUST BE OBTAINED FROM THE INDIVIDUAL UTILITIES BEFORE PROCEEDING WITH CONSTRUCTION.

BM 13-009  
ELEV 230.692m

N.E. Cor. Jefferson Ave. & Main St., Tblt. in S. Conc. foundation of Lift Station, 0.5m W. & 0.1m below brick of S.E. Cor. of Bldg.

**AECOM**

DESIGNED BY: FMI  
DRAWN BY: ADL  
HOR. SCALE: 1:250  
VERT. SCALE: 1:50  
DATE: Nov 13, 2012

CHECKED BY: EDT  
APPROVED BY: [Signature]  
RELEASED FOR CONSTRUCTION: [Signature]  
DATE: Nov 13, 2012

**APEGM**  
Certificate of Authorization  
AECOM Canada Ltd.  
No. 4671 Date: Nov 13, 2012

PROFESSIONAL'S SEAL  
PROVINCE OF MANITOBA  
REGISTERED PROFESSIONAL ENGINEER  
E.D.J. TOUPIN  
Member  
23484  
Nov 13, 2012  
CONSULTANT DRAWING NO.  
60219315-SHT-30-PH02 C-0013

**THE CITY OF WINNIPEG**  
WATER AND WASTE DEPARTMENT

JEFFERSON EAST  
COMBINED SEWER RELIEF  
CONTRACT 2  
SMITHFIELD AVENUE  
105m EAST OF ST. CROSS STREET TO  
SCOTIA STREET

SHEET 13 OF 19  
CITY DRAWING NUMBER  
10448  
REV 0

BID OPPORTUNITY NO. 863-2012