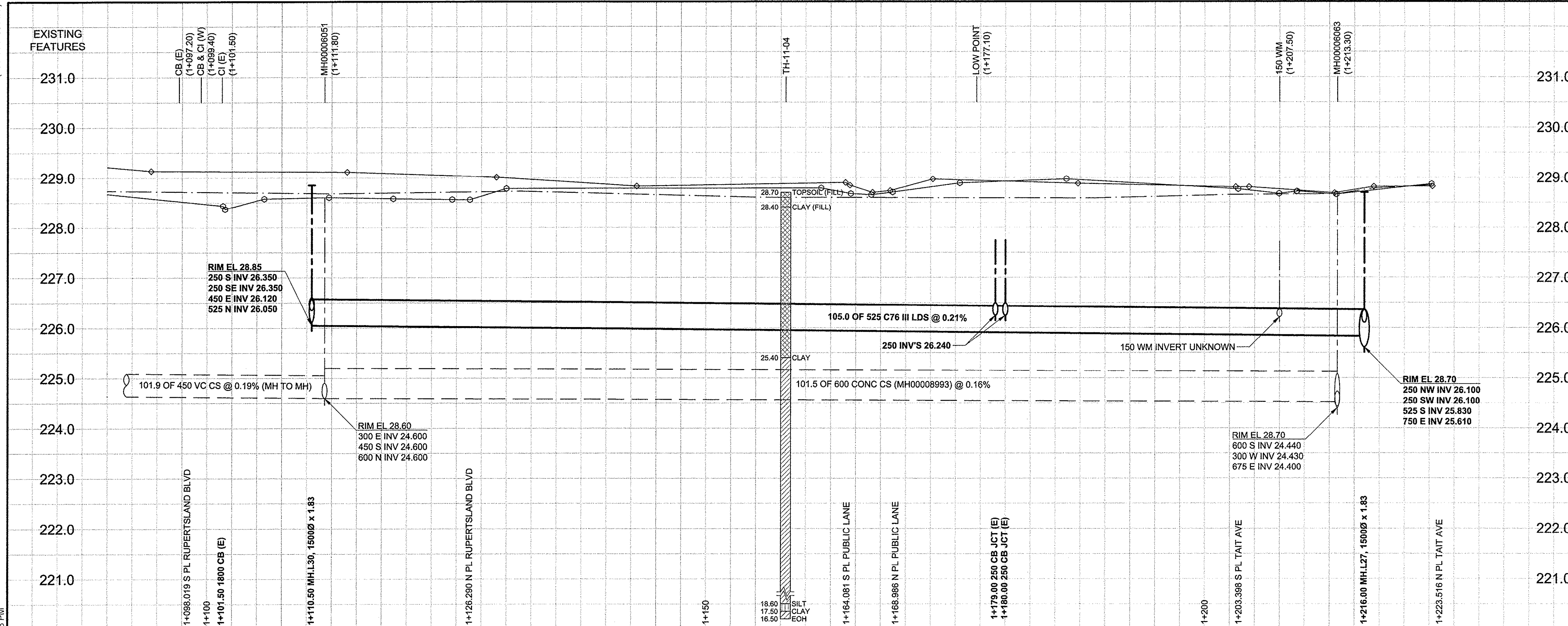


D SIZE 22" x 34" (564mm x 864mm)

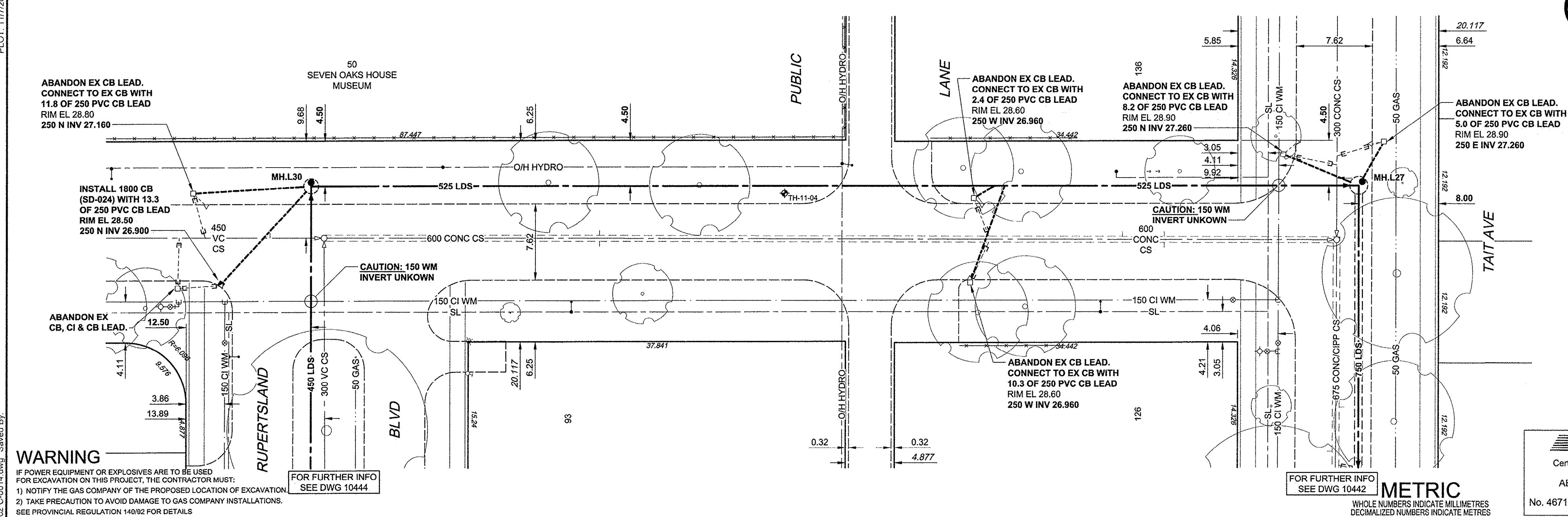
PLOT: 11/17/2012 1:33:33 PM

AECOM REVIEW DRAFT CHK



CHAINAGE ALONG E PL
1+000.000 = S PL SMITHFIELD AVE

MAC STREET



WARNING

IF POWER EQUIPMENT OR EXPLOSIVES ARE TO BE USED FOR EXCAVATION ON THIS PROJECT, THE CONTRACTOR MUST:

- 1) NOTIFY THE GAS COMPANY OF THE PROPOSED LOCATION OF EXCAVATION.
- 2) TAKE PRECAUTION TO AVOID DAMAGE TO GAS COMPANY INSTALLATIONS.

SEE PROVINCIAL REGULATION 140R02 FOR DETAILS

EXISTING	LEGEND - PLAN	NEW	EXISTING	LEGEND - PROFILE	NEW	EXISTING	LEGEND - PROFILE	NEW
○	150 WM WATERMAIN	●	○	150 WM WATERMAIN	●	○	150 WM WATERMAIN	●
○	HYDRANT	●	○	HYDRANT	●	○	HYDRANT	●
○	VALVE	●	○	VALVE	●	○	VALVE	●
○	300 LDS LAND DRAINAGE SEWER	●	○	300 LDS LAND DRAINAGE SEWER	●	○	300 LDS LAND DRAINAGE SEWER	●
○	250 WWS WASTE WATER SEWER	●	○	250 WWS WASTE WATER SEWER	●	○	250 WWS WASTE WATER SEWER	●
○	MANHOLE	●	○	MANHOLE	●	○	MANHOLE	●
○	CATCH BASIN	●	○	CATCH BASIN	●	○	CATCH BASIN	●
○	CURB INLET	●	○	CURB INLET	●	○	CURB INLET	●
○	CULVERT	●	○	CULVERT	●	○	CULVERT	●
○	PIPE ABANDONMENTS	●	○	PIPE ABANDONMENTS	●	○	PIPE ABANDONMENTS	●
○	SURVEY BAR	●	○	SURVEY BAR	●	○	SURVEY BAR	●

EXISTING	LEGEND - PLAN	NEW	EXISTING	LEGEND - PROFILE	NEW	EXISTING	LEGEND - PROFILE	NEW
○	CURB STOP	●	○	CURB STOP	●	○	CURB STOP	●
○	REDUCER	●	○	REDUCER	●	○	REDUCER	●
○	COUPLING	●	○	COUPLING	●	○	COUPLING	●
○	ANODE	●	○	ANODE	●	○	ANODE	●
○	HYDRO	●	○	HYDRO	●	○	HYDRO	●
○	MTS	●	○	MTS	●	○	MTS	●
○	GAS	●	○	GAS	●	○	GAS	●
○	TESTHOLE	●	○	TESTHOLE	●	○	TESTHOLE	●
○	LAMP STANDARD	●	○	LAMP STANDARD	●	○	LAMP STANDARD	●
○	TREE	●	○	TREE	●	○	TREE	●

LOCATION APPROVED
UNDERGROUND STRUCTURES

DATE: 12/11/13

NOTE: LOCATION OF UNDERGROUND STRUCTURES AS SHOWN ARE BASED ON THE BEST INFORMATION AVAILABLE. BUT NO GUARANTEE IS GIVEN THAT ALL EXISTING UTILITIES ARE EXACT. CONFIRMATION OF EXISTENCE AND EXACT LOCATION OF ALL SERVICES MUST BE OBTAINED FROM THE INDIVIDUAL UTILITIES BEFORE PROCEEDING WITH CONSTRUCTION.

NO.	ISSUED FOR CONSTRUCTION	DATE	BY
0	ISSUED FOR CONSTRUCTION	12/11/13	ADL
NO.	REVISIONS	Y/M/MDD	BY

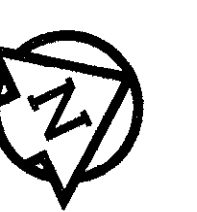
AECOM

DESIGNED BY: FMI
DRAWN BY: ADL
CHECKED BY: EDT
APPROVED BY: [Signature]
HOR. SCALE: 1:250
VERT. SCALE: 1:50

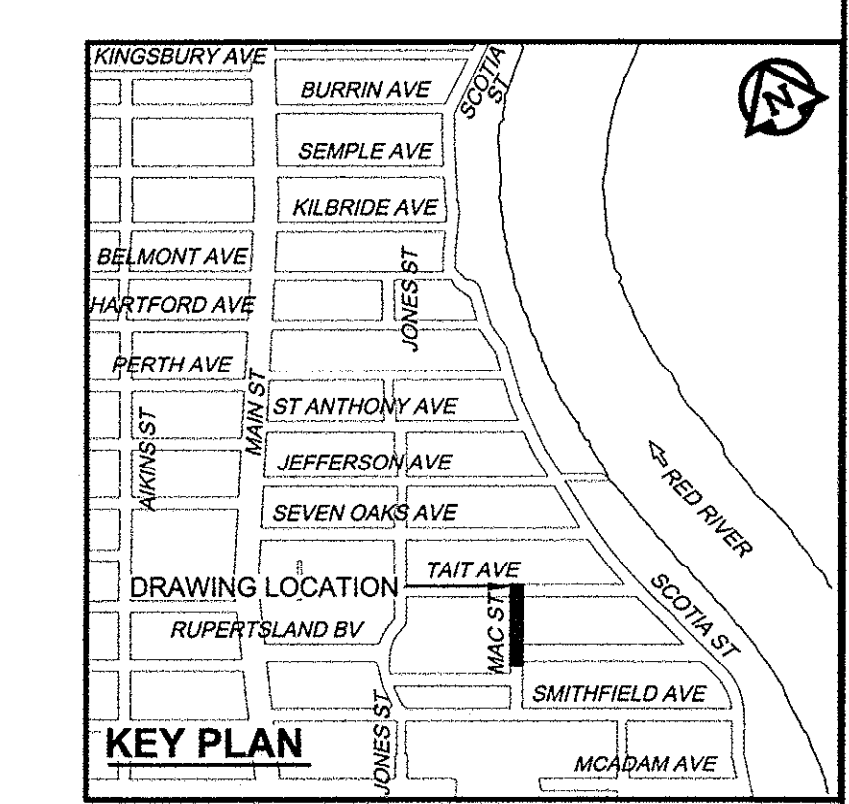
DATE: Nov 13, 2012

PROFESSIONAL'S SEAL: E.D.J. TOUPIN, Member 23484, REGISTERED PROFESSIONAL ENGINEER

CONSULTANT DRAWING NO. 60219315-SHT-30-PI02 C-0014



- CONSTRUCTION NOTES:**
1. FOR DETAILED TEST HOLE INFORMATION, SEE SPECIFICATION.
 2. LOCATION OF SERVICES SHOWN ON DRAWINGS ARE APPROXIMATE.
 3. CONFIRM LOCATION OF ALL WATER & WASTEWATER SERVICES IN THE FIELD.
 4. INSTALL NEW SEWERS, CATCHBASIN LEADS AND WATERMANS BY TRENCHLESS METHODS.
 5. ALL SHAFTS SHALL HAVE CLASS 3 BACKFILL.



APECM
Certificate of Authorization
AECOM Canada Ltd.
No. 4671 Date: Nov 13, 2012

BID OPPORTUNITY NO. 863-2012

THE CITY OF WINNIPEG
WATER AND WASTE DEPARTMENT

JEFFERSON EAST
COMBINED SEWER RELIEF
CONTRACT 2
MAC STREET
RUPERTSLAND BOULEVARD TO
TAIT AVENUE

SHEET 14 OF 19
CITY DRAWING NUMBER 10449
REV 0