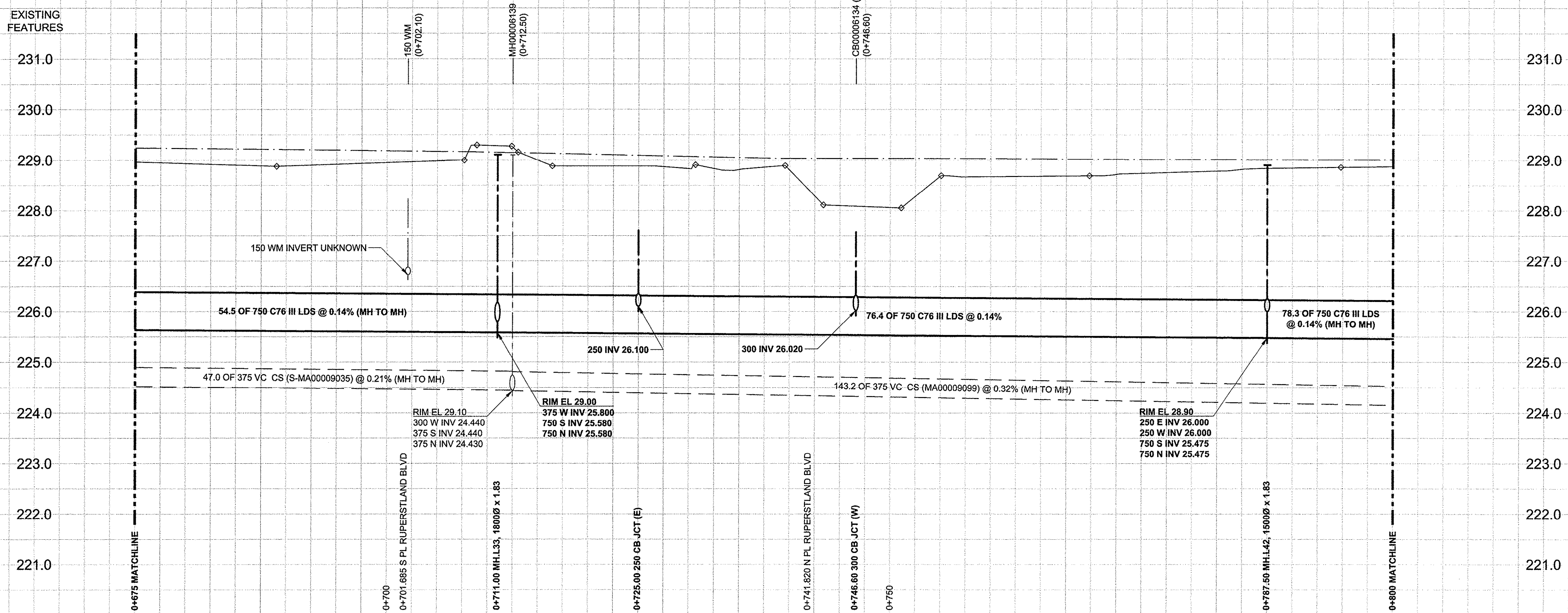


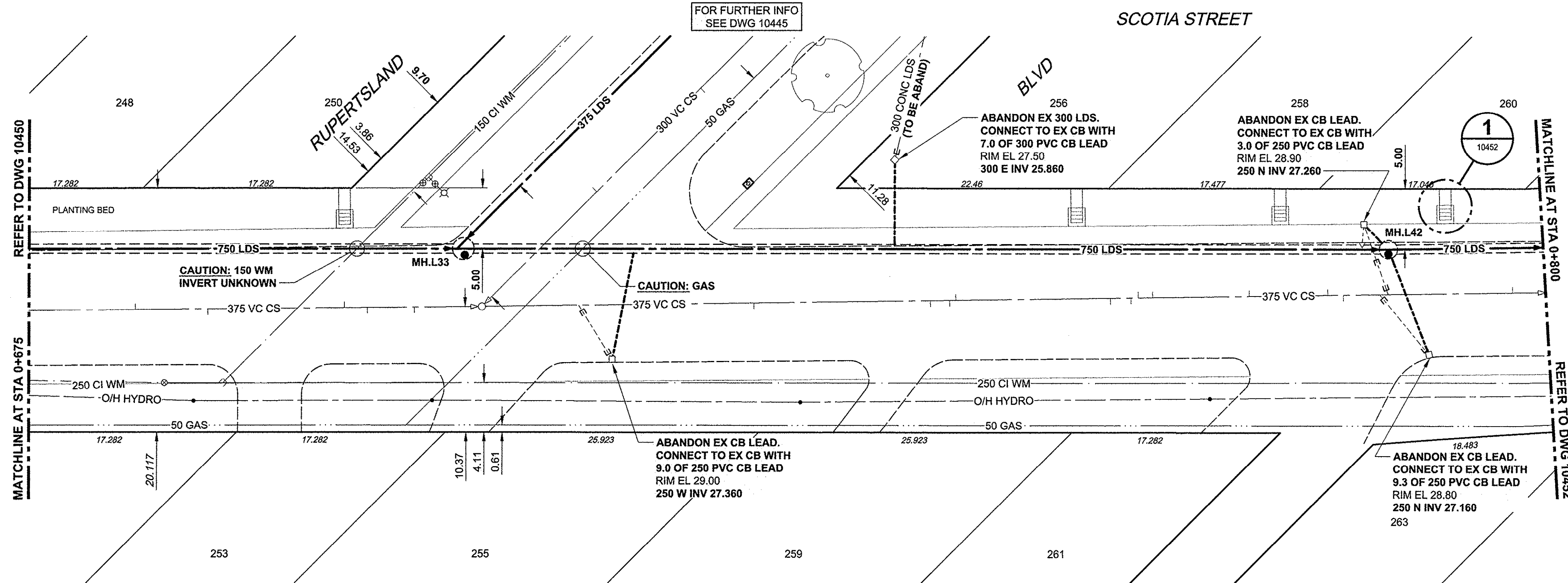
D SIZE 22" x 34" (559mm x 864mm)

PLOT: 11/17/2012 1:34:03 PM

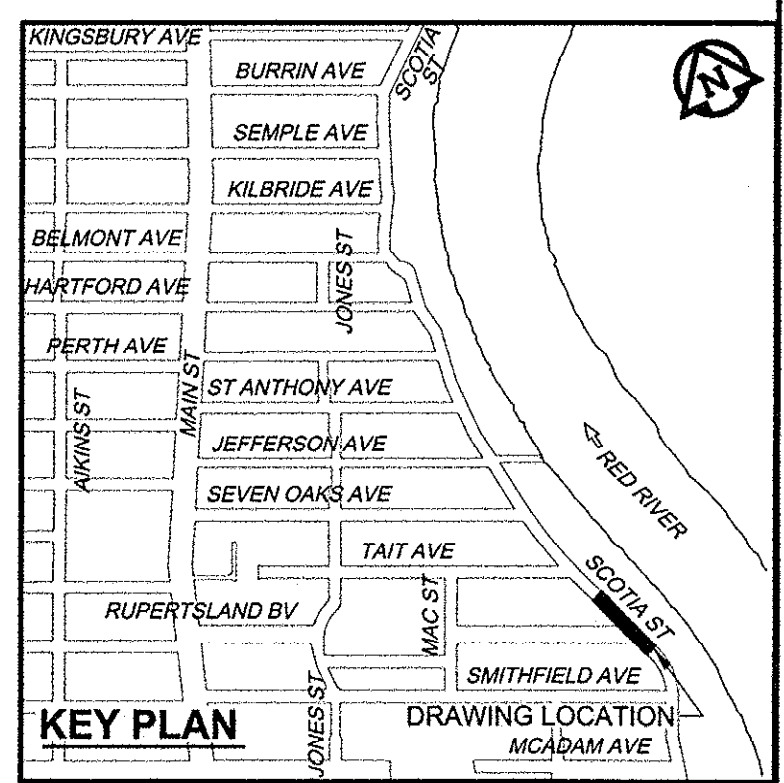
AECOM FILE NAME: 60219315-SHT-30-Ph02 C-0016.dwg Saved By: 6/18/13



CHAINAGE ALONG N PL



- CONSTRUCTION NOTES:**
- FOR DETAILED TEST HOLE INFORMATION, SEE SPECIFICATION.
 - LOCATION OF SERVICES SHOWN ON DRAWINGS ARE APPROXIMATE.
 - CONFIRM LOCATION OF ALL WATER & WASTEWATER SERVICES IN THE FIELD.
 - INSTALL NEW SEWERS, CATCHBASIN LEADS AND WATERMANS BY TRENCHLESS METHODS.
 - ALL SHAFTS SHALL HAVE CLASS 3 BACKFILL.



WARNING
 IF POWER EQUIPMENT OR EXPLOSIVES ARE TO BE USED FOR EXCAVATION ON THIS PROJECT, THE CONTRACTOR MUST:
 1) NOTIFY THE GAS COMPANY OF THE PROPOSED LOCATION OF EXCAVATION.
 2) TAKE PRECAUTION TO AVOID DAMAGE TO GAS COMPANY INSTALLATIONS.
 SEE PROVINCIAL REGULATION 140/92 FOR DETAILS

APEGM
 Certificate of Authorization
 AECOM Canada Ltd.
 No. 4671 Date: Nov 13, 2012

METRIC
 WHOLE NUMBERS INDICATE MILLIMETRES
 DECIMALIZED NUMBERS INDICATE METRES

EXISTING	LEGEND - PLAN	NEW	EXISTING	LEGEND - PROFILE	NEW
○	150 WM WATERMAIN	●	○	150 WM WATERMAIN	●
○	HYDRANT	●	○	HYDRANT	●
○	VALVE	●	○	VALVE	●
○	300 LDS LAND DRAINAGE SEWER	●	○	300 LDS LAND DRAINAGE SEWER	●
○	250 WWS WASTE WATER SEWER	●	○	250 WWS WASTE WATER SEWER	●
○	MANHOLE	●	○	MANHOLE	●
○	CATCH BASIN	●	○	CATCH BASIN	●
○	CURB INLET	●	○	CURB INLET	●
○	CULVERT	●	○	CULVERT	●
○	PIPE ABANDONMENTS	●	○	PIPE ABANDONMENTS	●
○	SURVEY BAR	●	○	SURVEY BAR	●
○	150 WM WATERMAIN	●	○	150 WM WATERMAIN	●
○	HYDRANT	●	○	HYDRANT	●
○	VALVE	●	○	VALVE	●
○	300 LDS LAND DRAINAGE SEWER	●	○	300 LDS LAND DRAINAGE SEWER	●
○	250 WWS WASTE WATER SEWER	●	○	250 WWS WASTE WATER SEWER	●
○	MANHOLE	●	○	MANHOLE	●
○	CATCH BASIN	●	○	CATCH BASIN	●
○	CURB INLET	●	○	CURB INLET	●
○	CULVERT	●	○	CULVERT	●
○	PIPE ABANDONMENTS	●	○	PIPE ABANDONMENTS	●
○	SURVEY BAR	●	○	SURVEY BAR	●
○	150 WM WATERMAIN	●	○	150 WM WATERMAIN	●
○	HYDRANT	●	○	HYDRANT	●
○	VALVE	●	○	VALVE	●
○	300 LDS LAND DRAINAGE SEWER	●	○	300 LDS LAND DRAINAGE SEWER	●
○	250 WWS WASTE WATER SEWER	●	○	250 WWS WASTE WATER SEWER	●
○	MANHOLE	●	○	MANHOLE	●
○	CATCH BASIN	●	○	CATCH BASIN	●
○	CURB INLET	●	○	CURB INLET	●
○	CULVERT	●	○	CULVERT	●
○	PIPE ABANDONMENTS	●	○	PIPE ABANDONMENTS	●
○	SURVEY BAR	●	○	SURVEY BAR	●
○	150 WM WATERMAIN	●	○	150 WM WATERMAIN	●
○	HYDRANT	●	○	HYDRANT	●
○	VALVE	●	○	VALVE	●
○	300 LDS LAND DRAINAGE SEWER	●	○	300 LDS LAND DRAINAGE SEWER	●
○	250 WWS WASTE WATER SEWER	●	○	250 WWS WASTE WATER SEWER	●
○	MANHOLE	●	○	MANHOLE	●
○	CATCH BASIN	●	○	CATCH BASIN	●
○	CURB INLET	●	○	CURB INLET	●
○	CULVERT	●	○	CULVERT	●
○	PIPE ABANDONMENTS	●	○	PIPE ABANDONMENTS	●
○	SURVEY BAR	●	○	SURVEY BAR	●

LOCATION APPROVED
 UNDERGROUND STRUCTURES

SUPR. U/G STRUCTURES COMMITTEE DATE

NOTE:
 LOCATION OF UNDERGROUND STRUCTURES AS SHOWN ARE BASED ON THE BEST INFORMATION AVAILABLE. BUT NO GUARANTEE IS GIVEN THAT ALL EXISTING UTILITIES ARE SHOWN OR THAT THE GIVEN LOCATIONS ARE EXACT. CONFIRMATION OF EXISTENCE AND EXACT LOCATION OF ALL SERVICES MUST BE OBTAINED FROM THE INDIVIDUAL UTILITIES BEFORE PROCEEDING WITH CONSTRUCTION.

NO.	ISSUED FOR CONSTRUCTION	DATE	BY
0	ISSUED FOR CONSTRUCTION	12/11/13	ADL
NO.	REVISIONS	Y/M/MD	BY

AECOM

DESIGNED BY: FMI
 DRAWN BY: ADL
 HOR. SCALE: 1:250
 VERT. SCALE: 1:50

CHECKED BY: DT
 APPROVED BY: [Signature]
 RELEASED FOR CONSTRUCTION: [Signature]
 DATE: Nov 13, 2012

PROFESSIONAL'S SEAL
E.D.J. TOUPIN
 Member 23484
 REGISTERED PROFESSIONAL ENGINEER
 CONSULTANT DRAWING NO. 60219315-SHT-30-Ph02 C-0016

THE CITY OF WINNIPEG
 WATER AND WASTE DEPARTMENT

JEFFERSON EAST COMBINED SEWER RELIEF CONTRACT 2
 SCOTIA STREET
 70m NORTH OF SMITHFIELD AVENUE TO 50m SOUTH OF TAIT AVENUE

SHEET 16 OF 19
 CITY DRAWING NUMBER 10451
 REV 0

BID OPPORTUNITY NO. 863-2012