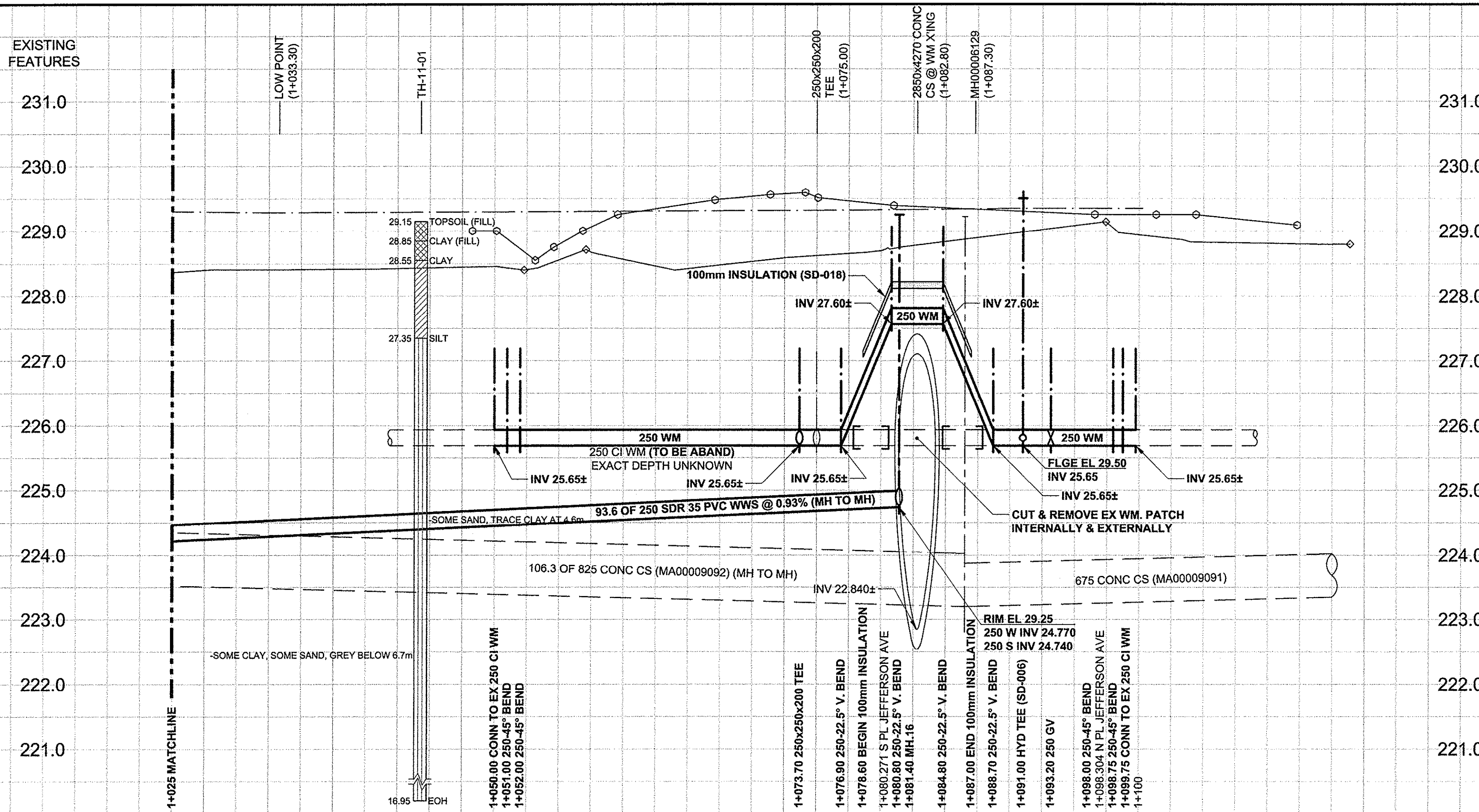


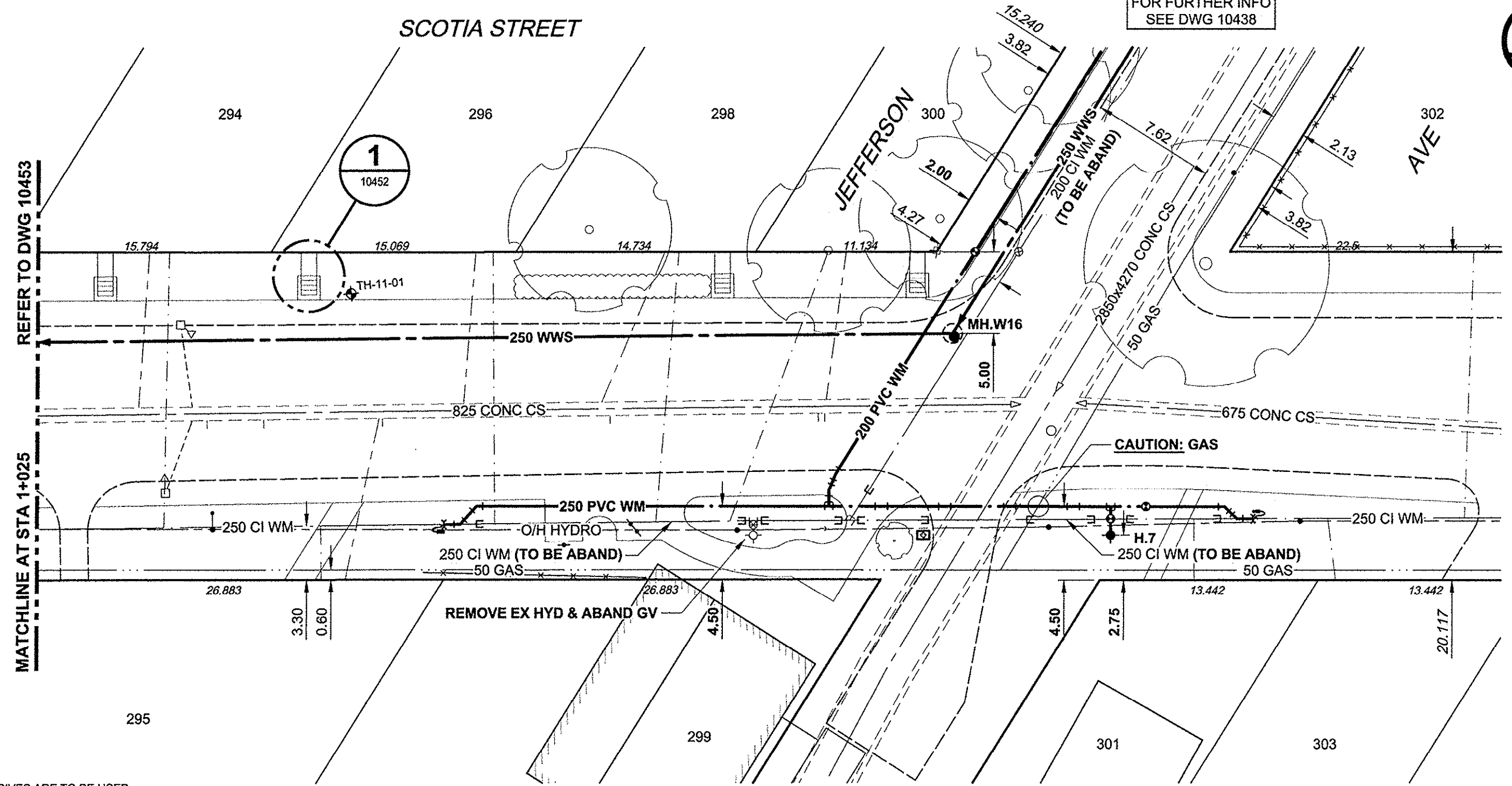
D SIZE 22" x 34" (559mm x 864mm)

PLOT: 11/17/2012 1:34:49 PM

AECOM REVIEW DRAFT CHK



CHAINAGE ALONG N PL



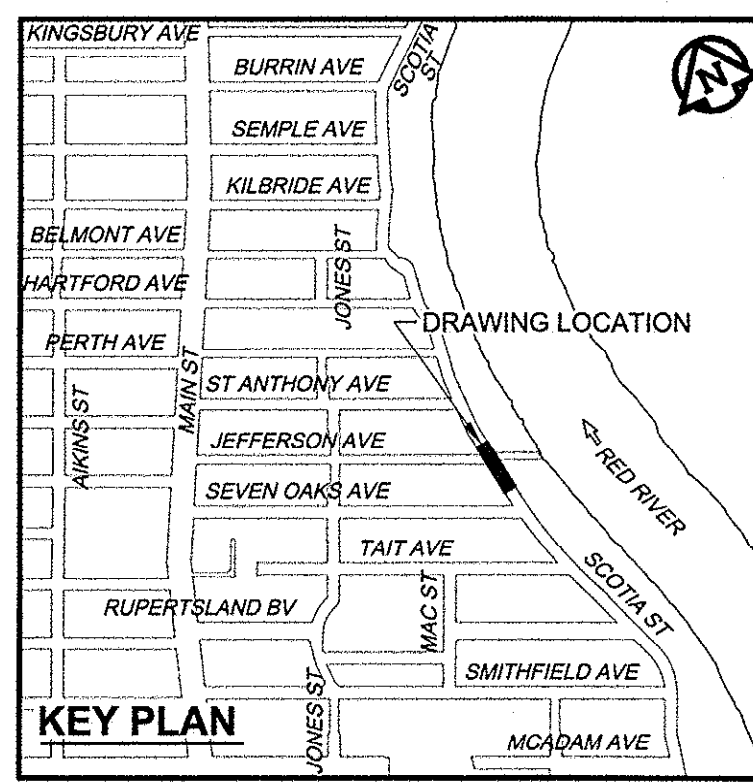
WATER SERVICE INFORMATION

ADDRESS	DISTANCE PROPERTY	SIZE (mm) & TYPE	SHORT & LONG MEASUREMENT	CORPORATION LOCATION	REMARKS
294 SCOTIA	0.30	16"	0.4m SNL OF HOUSE	0.46m S OF SIC	
		LEAD	33m NNL OF SEVEN OAKS		
295 SCOTIA	10.60	12"	2.8m NSL OF HOUSE	OPP S/C	
		LEAD	27.1m S HYD S JEFFERSON		
296 SCOTIA	2.70	20"	0.7m SNL OF HOUSE	OPP S/C	
		COPPER	27.2m SSL OF JEFFERSON		
298 SCOTIA	2.40	16"	2.6m SNL OF HOUSE		
		LEAD	15.8m SSL OF JEFFERSON		
299 SCOTIA			UNKNOWN		
300 SCOTIA	BLDG 10.9	16"	UNKNOWN		
		LEAD	4.3m S N/BL		
			6.1m S N/PL		
301 SCOTIA	10.90		1.9m NSL HSE	OPP S/C	
			27.1m N HYD S JEFFERSON		
302 SCOTIA	0.30		4.8m SNL HSE	0.61m S S/C	
			15m NNL JEFFERSON		
303 SCOTIA	10.60	12"	2.2m SSL HSE	0.46m S S/C	
		LEAD	35.8m N HYD S JEFFERSON		

SEWER SERVICE INFORMATION

ADDRESS	PL TIE (SHORT/LONG)	JUNCTION TIE	REMARKS
294 SCOTIA		96.1m S MH JEFFERSON	
295 SCOTIA		41.5m S MH JEFFERSON	
296 SCOTIA		57.2m S OF MH @ ST ANTHONY	
298 SCOTIA		36.3m S MH JEFFERSON	
299 SCOTIA			NO INFO
300 SCOTIA		36.3m S MH JEFFERSON	
301 SCOTIA		88m S OF MH @ ST ANTHONY	
302 SCOTIA		80.5m S OF MH @ ST ANTHONY	
303 SCOTIA		80.5m S OF MH @ ST ANTHONY	

- CONSTRUCTION NOTES:**
- FOR DETAILED TEST HOLE INFORMATION, SEE SPECIFICATION.
 - LOCATION OF SERVICES SHOWN ON DRAWINGS ARE APPROXIMATE.
 - CONFIRM LOCATION OF ALL WATER & WASTEWATER SERVICES IN THE FIELD.
 - NOTIFY ALL AFFECTED RESIDENTS AND BUSINESSES 24 HOURS IN ADVANCE OF ANY SHUT DOWN OR DISRUPTION OF SERVICE.
 - INSTALL NEW SEWERS, CATCHBASIN LEADS AND WATERMANS BY TRENCHLESS METHODS.
 - ALL SHAFTS SHALL HAVE CLASS 3 BACKFILL.
 - MINIMUM COVER TO TOP OF PROPOSED WATERMAIN SHALL BE 2.5m FROM STREET CENTERLINE.
 - INSTALL ALL HYDRANTS WITH FLANGE ELEVATION 50mm TO 150mm ABOVE FINISHED GRADE.
 - HYDRANT ASSEMBLIES & VERTICAL/HORIZONTAL BENDS SHALL BE FULLY MECHANICALLY RESTRAINED.
 - REPLACE ALL EXISTING LEAD SERVICES FROM PROPOSED WATERMAIN TO PROPERTY LINE.
 - PROVIDE TRENCH INSULATION WHERE 2.1m OF COVER CANNOT BE PROVIDED FOR WATER SERVICES AS PER SD-018.
 - RENEW SEWER SERVICES TO PROPERTY LINE AND PLUG EXISTING SERVICE AS PER SD-021.



WARNING
 IF POWER EQUIPMENT OR EXPLOSIVES ARE TO BE USED FOR EXCAVATION ON THIS PROJECT, THE CONTRACTOR MUST:
 1) NOTIFY THE GAS COMPANY OF THE PROPOSED LOCATION OF EXCAVATION.
 2) TAKE PRECAUTION TO AVOID DAMAGE TO GAS COMPANY INSTALLATIONS.
 SEE PROVINCIAL REGULATION 140/92 FOR DETAILS

150 WWM	WATERMAIN	150 WWM	EXISTING	NEW	EXISTING	NEW	EXISTING	NEW	EXISTING	NEW	EXISTING	NEW
○	HYDRANT	+	---	---	---	---	---	---	---	---	---	---
○	VALVE	+	---	---	---	---	---	---	---	---	---	---
○	LAND DRAINAGE SEWER	○	---	---	---	---	---	---	---	---	---	---
○	WASTE WATER SEWER	○	---	---	---	---	---	---	---	---	---	---
○	MANHOLE	○	---	---	---	---	---	---	---	---	---	---
○	CATCH BASIN	○	---	---	---	---	---	---	---	---	---	---
○	CURB INLET	○	---	---	---	---	---	---	---	---	---	---
○	CULVERT	○	---	---	---	---	---	---	---	---	---	---
○	PIPE ABANDONMENTS	○	---	---	---	---	---	---	---	---	---	---
○	SURVEY BAR	○	---	---	---	---	---	---	---	---	---	---

LOCATION APPROVED
 UNDERGROUND STRUCTURES
 SUPR. U/G STRUCTURES COMMITTEE DATE
 NOTE: LOCATION OF UNDERGROUND STRUCTURES AS SHOWN ARE BASED ON THE BEST INFORMATION AVAILABLE. BUT NO GUARANTEE IS GIVEN THAT ALL EXISTING UTILITIES ARE SHOWN OR THAT THE GIVEN LOCATIONS ARE EXACT. CONFIRMATION OF EXISTENCE AND EXACT LOCATION OF ALL SERVICES MUST BE OBTAINED FROM THE INDIVIDUAL UTILITIES BEFORE PROCEEDING WITH CONSTRUCTION.

NO.	REVISIONS	DATE	BY
0	ISSUED FOR CONSTRUCTION	12/11/13	ADL
		YYMMDD	

METRIC
 WHOLE NUMBERS INDICATE MILLIMETRES
 DECIMALIZED NUMBERS INDICATE METRES

AECOM

DESIGNED BY: FMI
 CHECKED BY: BDT
 DRAWN BY: ADL
 APPROVED BY: [Signature]
 HOR. SCALE: 1:250
 VERT. SCALE: 1:50
 DATE: Nov 13, 2012
 RELEASED FOR CONSTRUCTION: [Signature]
 DATE: Nov 20, 13, 2012

APEGM
 Certificate of Authorization
 AECOM Canada Ltd.
 No. 4671 Date: Nov 13, 2012

PROFESSIONAL'S SEAL
 PROVINCE OF MANITOBA
 REGISTERED PROFESSIONAL ENGINEER
 E.D.J. TOUPIN
 Member 23484
 CONSULTANT DRAWING NO. 60219315-SHT-30-Ph02 C-0019

THE CITY OF WINNIPEG
 WATER AND WASTE DEPARTMENT

JEFFERSON EAST
 COMBINED SEWER RELIEF
 CONTRACT 2
 SCOTIA STREET
 25m NORTH OF SEVEN OAKS AVENUE TO
 JEFFERSON AVENUE

SHEET 19 OF 19
 CITY DRAWING NUMBER 10454
 REV 0

BID OPPORTUNITY NO. 863-2012