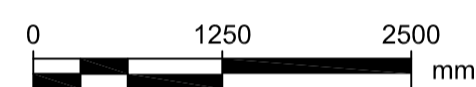
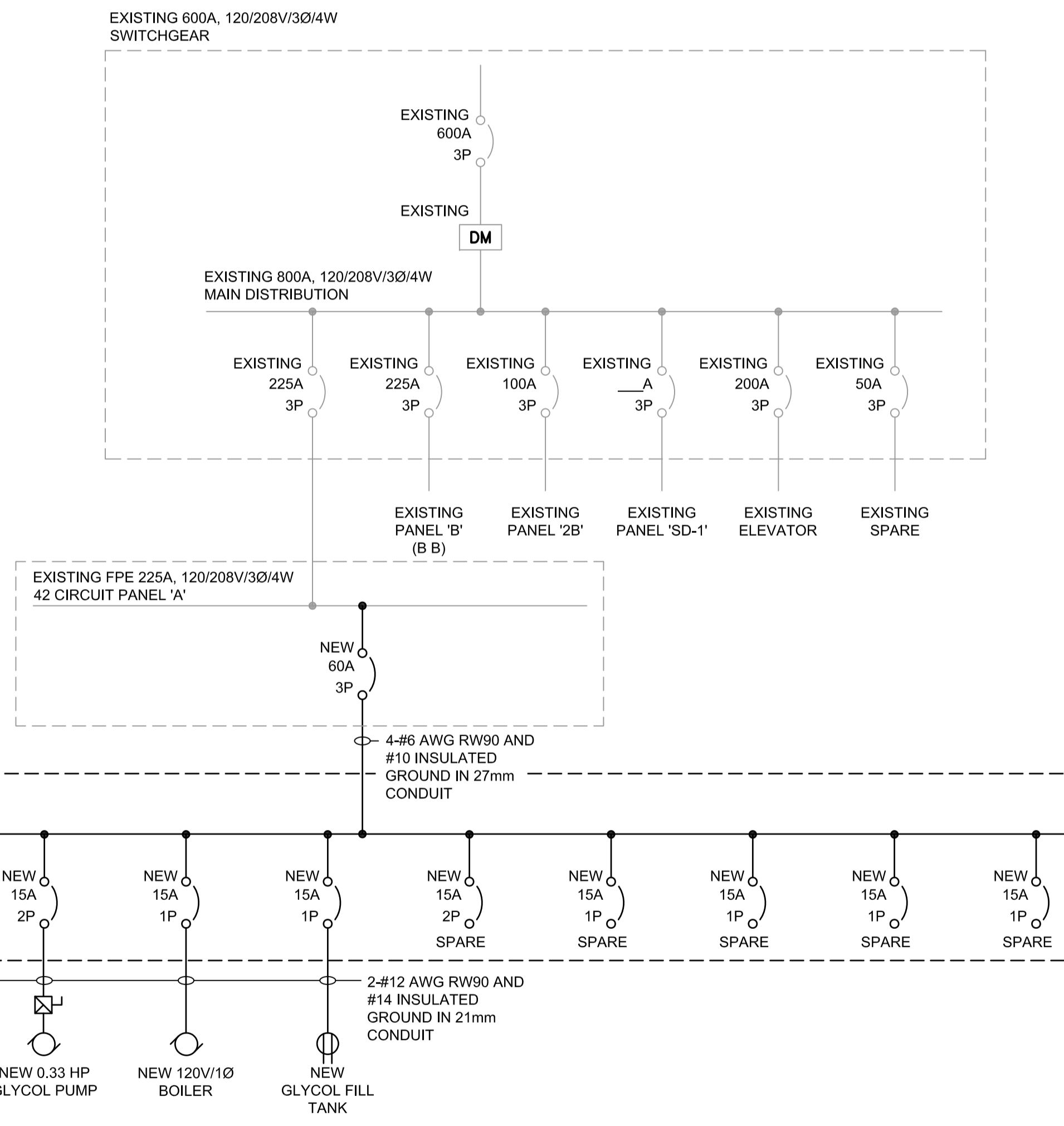


**PARTIAL BASEMENT FLOOR PLAN - ELECTRICAL**

Scale 1:50



MOTOR SCHEDULE																			
MOTOR			STARTER					POWER				REMARKS							
DESCRIPTION	EQUIP. LOAD	V/Ø	MCC	SIZE	TYPE	MAN.	MAG.	S/S	PL	H.O.A.	OVERCURRENT DEVICE	LOCATION	PANEL	CCT.	FEEDER	CAP. SIZE	DISC. TYPE	INTERLOCK	REMARKS
UNIT HEATER	3.0 kW	208V/1Ø									20A-2P	MECH/ELEC RM	A1	1,3	2-#12				AUTO POSITION CONTROLLED BY METASYS
HOT WATER PUMP	0.75 HP	208V/1Ø								X	15A-2P	MECH/ELEC RM	A1	5,7	2-#12				AUTO POSITION CONTROLLED BY METASYS
GLYCOL PUMP	0.33 HP	208V/1Ø								X	15A-2P	MECH/ELEC RM	A1	9,11	2-#12				
BOILER	6A	120V/1Ø									15A-1P	MECH/ELEC RM	A1	2	2-#12				
GLYCOL FILL TANK	0.05 kW	120V/1Ø									15A-1P	MECH/ELEC RM	A1	4	2-#12				
CO MONITOR		120V/1Ø									15A-1P	MECH/ELEC RM	A1	6	2-#12				



**PARTIAL SINGLE LINE DISTRIBUTION**

Scale N.T.S.

SYMBOL SCHEDULE	
	CIRCUIT BREAKER
	EXISTING DIGITAL METERING
	ELECTRIC MOTOR PROVIDE BY OTHERS
	MAGNETIC MOTOR STARTER
	DISCONNECT SWITCH
	EXISTING PANEL BOARD - SURFACE MOUNTED
	NEW PANEL BOARD - SURFACE MOUNTED
	MOTOR RATED SWITCH
	POWER RECEPTACLE
	UNIT HEATER

NOTES:

**DRAWING NOTES**

- NEW MOTOR RATED SWITCH C/W RED COVER PLATE, LABELS INDICATING ON / OFF POSITIONS AND LAMACOID ABOVE THE SWITCH STATING 'BOILER EMERGENCY SHUTOFF'.
- ELECTRICAL CONTRACTOR TO SUPPLY NEW BREAKERS AS INDICATED IN THE SINGLE LINE DISTRIBUTION.
- PANEL 'A1' SHALL BE EATON PRL1a OR SQUARE D NQ PANELBOARD.
- NEW BOILER, UNIT HEATER, PUMPS AND VALVES PROVIDED BY OTHER DIVISIONS.



This drawing has been prepared for the use of AECOM's client and may not be used, reproduced or relied upon by third parties, except as agreed by AECOM and its client, as required by law or for use by governmental reviewing agencies. AECOM accepts no responsibility, and denies any liability whatsoever, to any party that modifies this drawing without AECOM's express written consent. Do not scale this document. All measurements must be obtained from stated dimensions.

No.	REVISION/DESCRIPTION	BY	DATE
0	ISSUED FOR TENDER	NC	2012.12.14

DRAWN	NC	CHECKED	SS	DESIGNED	LK	APPROVED
DATE	2012.11.02	USER				APPROVAL

THE CITY OF WINNIPEG  
PLANNING, PROPERTY AND  
DEVELOPMENT DEPARTMENT  
MUNICIPAL ACCOMMODATIONS DIVISION  
3-65 GARRY STREET, R3C 4K4

PROJECT  
CIVIC OFFICES  
NEW BOILER INSTALLATION  
CITY BID OPP. NO: 886-2012  
219 PROVENCHEUR BOULEVARD, WINNIPEG, MANITOBA

SHEET TITLE  
ELECTRICAL  
PARTIAL BASEMENT FLOOR PLANS  
SCHEDULES AND SINGLE LINE

SCALE	PROJECT No:	SHEET No:
AS SHOWN	60280355	E-101