

- NOTES:**
1. ALL GATE VALVES ARE CLOCKWISE TO OPEN WITH A RED OPERATING NUT UNLESS NOTED OTHERWISE.
 2. WATERMAIN TO BE INSTALLED BY TRENCHLESS METHODS.
 3. BACKFILL IS CLASS 5 WITHIN BOULEVARD AND CLASS 3 WHEN WITHIN 1.0m OF PAVEMENT OR SIDEWALK.
 4. WATER SERVICES ARE 19mm UNLESS OTHERWISE NOTED.
 5. MINIMUM COVER TO TOP OF WATERMAIN SHALL BE 2.4m.
 6. LOCATION OF ALL SERVICES TO BE CONFIRMED IN FIELD.
 7. EXPOSE EXISTING WATERMAIN TO CONFIRM DEPTH PRIOR TO CONSTRUCTION.
 8. ALL LEAD SERVICES TO BE RENEWED TO PROPERTY LINE.
 9. SERVICES TO BE RENEWED SHALL BE REPLACED FROM WATERMAIN TO PROPERTY LINE. ALL OTHERS TO BE RECONNECTED.
 10. ANY GATE VALVES EXISTING ON THE 350mm WM ABANDONEMENT SHALL HAVE THEIR VALVE BOXES & VALVE STEM EXTENSIONS REMOVED.



"Description of property limits, and existing and/or proposed features relative to these limits as shown on this drawing do not represent a Legal Survey. GENIVAR makes no representation or guarantee that the property limit information is accurate. GENIVAR accepts no responsibility for damages, if any, suffered by any third party as a result of decisions made or actions based on this drawing."

METRIC
WHOLE NUMBERS INDICATE MILLIMETRES
DECIMALIZED NUMBERS INDICATE METRES

---	WATERMAIN	---	ANODE	---	WATERMAIN	---	WATERMAIN	---	LOCATION APPROVED	B.M.	CWB# 52-033
---	HYDRANT	---	REDUCER	---	VALVE	---	VALVE	---	UNDERGROUND STRUCTURES	ELEV.	231.557
---	VALVE	---	PLUG	---	LAND DRAINAGE SEWER	---	LAND DRAINAGE SEWER	---			
---	CURB STOP	---	TREE	---	WASTE WATER SEWER	---	WASTE WATER SEWER	---			
---	WASTE WATER SEWER	---	LAMP STANDARD	---	CENTERLINE	---	CENTERLINE	---			
---	LAND DRAINAGE SEWER	---	GAS	---		---		---			
---	C.B. LEAD	---	HYDRO	---		---		---			
---	MANHOLE	---	M.T.S.	---		---		---			
---	CATCH BASIN	---	TRAFFIC SIGNAL	---		---		---			
---	TEE	---	CONCRETE/ASPHALT	---		---		---			
---	BEND	---	SIDEWALK	---		---		---			
---	EXISTING	---	LEGEND - PLAN	---	EXISTING	---	LEGEND - PROFILE	---	PROPOSED		

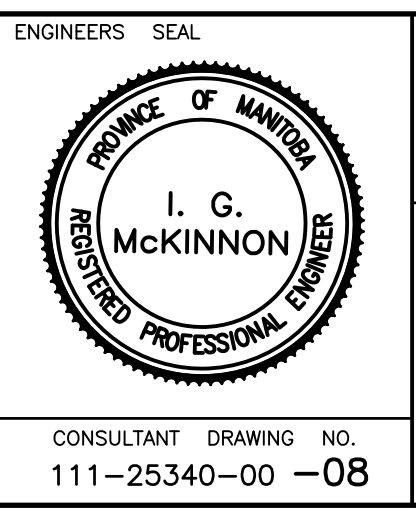
NOTE:
LOCATION OF UNDERGROUND STRUCTURES AS SHOWN ARE BASED ON THE BEST INFORMATION AVAILABLE BUT NO GUARANTEE IS GIVEN THAT ALL EXISTING UTILITIES ARE SHOWN OR THAT THE GIVEN LOCATIONS ARE EXACT. CONFIRMATION OF EXISTENCE AND EXACT LOCATION OF ALL SERVICES MUST BE OBTAINED FROM THE INDIVIDUAL UTILITIES BEFORE PROCEEDING WITH CONSTRUCTION.

NO.	REVISIONS	DATE	BY
3	BID OPPORTUNITY 90-2012	MAR/12	P.R.
2	REVISED DESIGN	MAR/12	P.R.
1	ISSUED FOR REVIEW	FEB/12	P.R.

GENIVAR
10 PRAIRIE WAY WINNIPEG, MANITOBA R2J 3J8
PH: (204)-233-2113 FAX: (204)-233-2080

DESIGNED BY: MBS
CHECKED BY: P.R.
DRAWN BY: MBS
APPROVED BY: I.McK.
HOR. SCALE: 1:500
VERT. SCALE: N/A
DATE: MARCH 2012

RELEASED FOR CONSTRUCTION
ORIGINALLY SIGNED BY
S. COURNOYER P. ENG
DATE: MARCH 15, 2012



THE CITY OF WINNIPEG
WATER AND WASTE DEPARTMENT

2012 CAPITAL WORKS
WATERMAIN ABANDONEMENT
WARDLAW AVENUE /
WELLINGTON CRESCENT
HUGO STREET NORTH TO OSBORNE STREET

SHEET 8 of 11
CITY DRAWING NO. D-12756