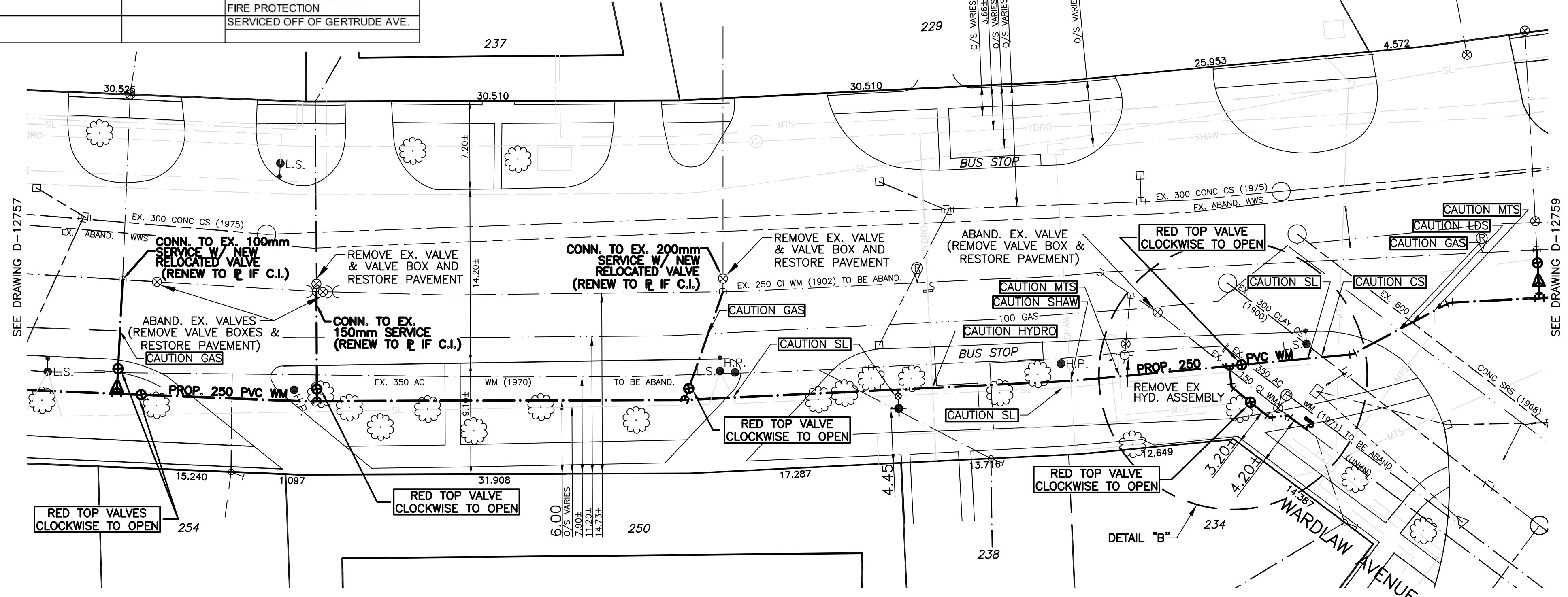
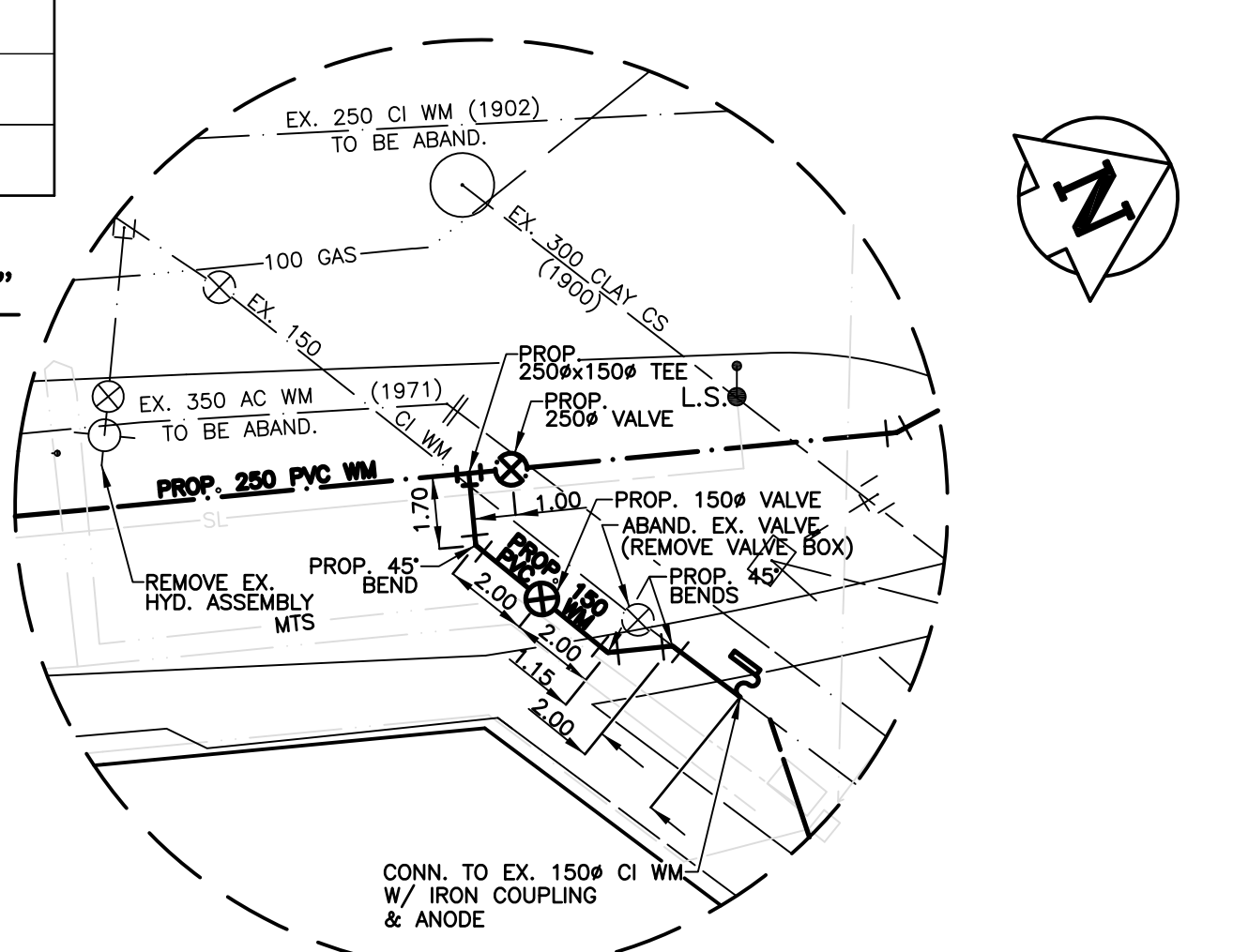


HOUSE WATER SERVICE INFORMATION					
ADDRESS & NATURE OF SERVICE	SIZE (mm) & TYPE	SHORT & LONG MEASUREMENT	CORP LOCATION	REMARKS	
229 WELLINGTON CRES	200 UNKNOWN			COMBINED DOMESTIC SUPPLY & FIRE PROTECTION SERVICED OFF OF WARDLAW AVE.	
234 WELLINGTON CRES	12 Lead	10.9 E/EHL 4.8 WWL DALY	5.5 W/S/C		
237 WELLINGTON CRES	150 UNKNOWN			COMBINED DOMESTIC SUPPLY & FIRE PROTECTION	
238 WELLINGTON CRES	20 Copper	0.9 N/SHL 27.1 SSL WARDLAW	13.7 S/S/C		
245 WELLINGTON CRES	100 UNKNOWN			COMBINED DOMESTIC SUPPLY & FIRE PROTECTION SERVICED OFF OF GERTRUDE AVE.	
260 WELLINGTON CRES	100 UNKNOWN				
264 WELLINGTON CRES	25 Copper	1.5 W/EHL 60.4 WWL DALY	OPP S/C		
265 WELLINGTON CRES	150 UNKNOWN			DOMESTIC WATER SUPPLY FIRE PROTECTION SERVICED OFF OF GERTRUDE AVE.	
266 WELLINGTON CRES	150 UNKNOWN				

CHAINAGE ALONG SOUTH SIDE OF WELLINGTON CRESCENT

DETAIL "B" N.T.S.



- NOTES:**
- ALL GATE VALVES ARE CLOCKWISE TO OPEN WITH A RED OPERATING NUT UNLESS NOTED OTHERWISE.
 - WATERMAIN TO BE INSTALLED BY TRENCHLESS METHODS.
 - BACKFILL IS CLASS 5 WITHIN BOULEVARD AND CLASS 3 WHEN WITHIN 1.0m OF PAVEMENT OR SIDEWALK.
 - WATER SERVICES ARE 19mm UNLESS OTHERWISE NOTED.
 - MINIMUM COVER TO TOP OF WATERMAIN SHALL BE 2.4m.
 - LOCATION OF ALL SERVICES TO BE CONFIRMED IN FIELD.
 - EXPOSE EXISTING WATERMAIN TO CONFIRM DEPTH PRIOR TO CONSTRUCTION.
 - ALL LEAD AND CAST IRON SERVICES TO BE RENEWED TO PROPERTY LINE.
 - SERVICES TO BE RENEWED SHALL BE REPLACED FROM WATERMAIN TO PROPERTY LINE. ALL OTHERS TO BE RECONNECTED.



"Description of property limits, and existing and/or proposed features relative to these limits as shown on this drawing do not represent a Legal Survey. GENIVAR makes no representation or guarantee that the property limits information is accurate. GENIVAR accepts no responsibility for damages, if any, suffered by any third party as a result of decisions made or actions based on this drawing."

METRIC
WHOLE NUMBERS INDICATE MILLIMETRES
DECIMALIZED NUMBERS INDICATE METRES

EXISTING	LEGEND - PLAN	PROPOSED	EXISTING	LEGEND - PLAN	PROPOSED	EXISTING	LEGEND - PROFILE	PROPOSED
	WATERMAIN			ANODE			WATERMAIN	
	HYDRANT			REDUCER			VALVE	
	VALVE			PLUG			LAND DRAINAGE SEWER	
	CURB STOP			TREE			WASTE WATER SEWER	
	WASTE WATER SEWER			LAMP STANDARD			CENTERLINE	
	LAND DRAINAGE SEWER			GAS				
	C.B. LEAD			HYDRO				
	MANHOLE			M.T.S.				
	CATCH BASIN			TRAFFIC SIGNAL				
	TEE			CONCRETE/ASPHALT				
	BEND			SIDEWALK				

LOCATION APPROVED UNDERGROUND STRUCTURES

SUPV. U/G STRUCTURES DATE COMMITTEE

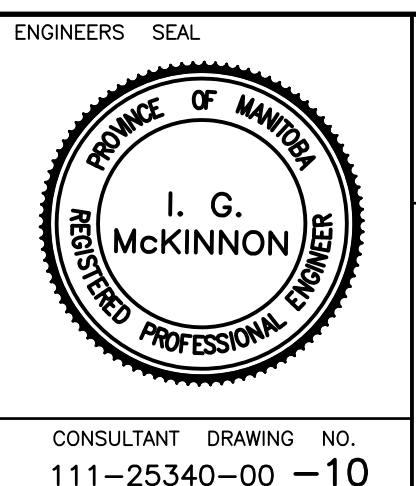
NOTE:
LOCATION OF UNDERGROUND STRUCTURES AS SHOWN ARE BASED ON THE BEST INFORMATION AVAILABLE BUT NO GUARANTEE IS GIVEN THAT ALL EXISTING UTILITIES ARE SHOWN OR THAT THE GIVEN LOCATIONS ARE EXACT. CONFIRMATION OF EXISTENCE AND EXACT LOCATION OF ALL SERVICES MUST BE OBTAINED FROM THE INDIVIDUAL UTILITIES BEFORE PROCEEDING WITH CONSTRUCTION.

NO.	REVISIONS	DATE	BY
3	BID OPPORTUNITY 90-2012	MAR/12	P.R.
2	REVISED DESIGN	MAR/12	P.R.
1	ISSUED FOR REVIEW	FEB/12	P.R.

GENIVAR
10 PRAIRIE WAY WINNIPEG, MANITOBA R2J 3J8
PH: (204)-233-2113 FAX: (204)-233-2080

DESIGNED BY: P.R. CHECKED BY: R.H.
DRAWN BY: P.R. APPROVED BY: I.McK.
HOR. SCALE: 1:250
VERT. SCALE: 1:50
DATE: MARCH 2012

RELEASED FOR CONSTRUCTION
ORIGINALLY SIGNED BY: S. COURNOYER P. ENG
DATE: MARCH 15, 2012



THE CITY OF WINNIPEG
WATER AND WASTE DEPARTMENT

2012 CAPITAL WORKS
WATERMAIN RENEWALS
WELLINGTON CRESCENT
50M EAST OF HUGO AVENUE NORTH
TO WARDLAW AVENUE

SHEET 2 OF 3
CITY DRAWING NO. D-12758